

**NM OIL CONSERVATION
ARTESIA DISTRICT**

State of New Mexico
Energy, Minerals & Natural Resources Department
OIL CONSERVATION DIVISION
1220 South St. Francis Dr.
Santa Fe, NM 87505

JUL 05 2017

RECEIVED

Form C-102

Revised August 1, 2011

Submit one copy to appropriate

District Office

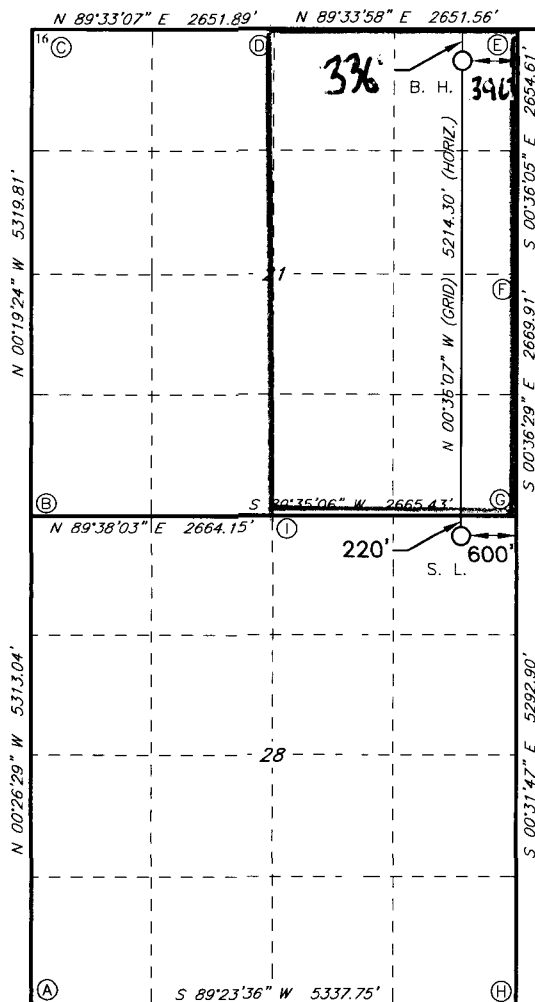
☐ AMENDED REPORT

District I
1625 N. French Dr., Hobbs, NM 88240
Phone: (575) 393-6161 Fax: (575) 393-0720
District II
811 S. First St., Artesia, NM 88210
Phone: (575) 748-1283 Fax: (575) 748-9720
District III
1000 Rio Brazos Road, Aztec, NM 87410
Phone: (505) 334-6178 Fax: (505) 334-6170
District IV
1220 S. St. Francis Dr., Santa Fe, NM 87505
Phone: (505) 476-3460 Fax: (505) 476-3462

WELL LOCATION AND ACREAGE DEDICATION PLAT

1 AP# Number 30-015-43495		2 Pool Code 98220		3 Pool Name Purple Sage; Wolfcamp (Gas)	
4 Property Code 315708		5 Property Name LOVING TOWNSITE 21 WOPA FEE			
7 OGRID NO. 14744		8 Operator Name MEWBOURNE OIL COMPANY			
				6 Well Number 2H	
				9 Elevation 3036'	
10 Surface Location					
UL or lot no. A	Section 28	Township 23S	Range 28E	Lot Idn 220	Feet from the 220
				North/South line NORTH	Feet From the 600
				East/West line EAST	County EDDY
11 Bottom Hole Location If Different From Surface					
UL or lot no. A	Section 21	Township 23S	Range 28E	Lot Idn 336'	Feet from the 336'
				North/South line NORTH	Feet from the 396'
				East/West line EAST	County EDDY
12 Dedicated Acres 320		13 Joint or Infill		14 Consolidation Code	
				15 Order No.	

No allowable will be assigned to this completion until all interest have been consolidated or a non-standard unit has been approved by the division.



GEODETTIC DATA
NAD 27 GRID - NM EAST
SURFACE LOCATION
N: 466634.7 - E: 576690.5
LAT: 32.28265158° N
LONG: 104.08517642° W
BOTTOM HOLE
N: 471847.5 - E: 576635.7
LAT: 32.29698170° N
LONG: 104.08531465° W
CORNER DATA
NAD 27 GRID - NM EAST
A: FOUND 100D NAIL
N: 461510.9 - E: 572001.0
B: FOUND 1/2" REBAR
N: 466822.6 - E: 571960.1
C: FOUND COTTON SPINDLE
N: 472141.1 - E: 571930.0
D: FOUND YPC ILLEGABLE
N: 472161.9 - E: 574581.2
E: FOUND COTTON SPINDLE
N: 472182.0 - E: 577232.1
F: FOUND COTTON SPINDLE
N: 469528.1 - E: 577260.0
G: FOUND COTTON SPINDLE
N: 466858.9 - E: 577288.3
H: FOUND 1/2" REBAR
N: 461567.5 - E: 577337.2
I: FOUND COTTON SPINDLE
N: 466839.6 - E: 574623.6

17 OPERATOR CERTIFICATION

I hereby certify that the information contained herein is true and complete to the best of my knowledge and belief, and that this organization either owns a working interest or unleased mineral interest in the land including the proposed bottom hole location or has a right to drill this well at this location pursuant to a contract with an owner of such a mineral or working interest, or to a voluntary pooling agreement or a compulsory pooling order heretofore entered by the division.

Signature: *Jackie Lathan* Date: *6/12/17*
Printed Name: *Jackie Lathan*

E-mail Address

18 SURVEYOR CERTIFICATION

I hereby certify that the well location shown on this plat was plotted from field notes of actual surveys made by me or under my supervision, and that the same is true and correct to the best of my belief.

11-05-2015

Date of Survey

Signature and Seal of Professional Surveyor

19680

Certificate Number

