

DISTRICT I
1625 N. French Dr., Hobbs, NM 88240
Phone: (575) 393-6161 Fax: (575) 393-0720

DISTRICT II
811 S. First St., Artesia, NM 88210
Phone: (575) 748-1283 Fax: (575) 748-9720

DISTRICT III
1000 Rio Brazos Road, Aztec, NM 87410
Phone: (505) 334-6178 Fax: (505) 334-6170

DISTRICT IV
1220 S. St. Francis Dr., Santa Fe, NM 87505
Phone: (505) 476-3460 Fax: (505) 476-3462

State of New Mexico
Energy, Minerals & Natural Resources Department
OIL CONSERVATION DIVISION
1220 South St. Francis Dr.
Santa Fe, New Mexico 87505

NM OIL CONSL. August 1, 2011
ARTESIA DISTRICT
Submit one copy to appropriate District Office

JUL 18 2017

☐ AMENDED REPORT

RECEIVED

WELL LOCATION AND ACREAGE DEDICATION PLAT

| | | |
|----------------------------------|------------------------------------|---|
| API Number 30-05 43874 | Pool Code 47545 | Pool Name NASH DRAW; DEKINAKE |
| Property Code 303152 | Property Name NASH UNIT | |
| OGRID No. 005380 | Operator Name XTO ENERGY | |
| | | Well Number 60H |
| | | Elevation 2987' |

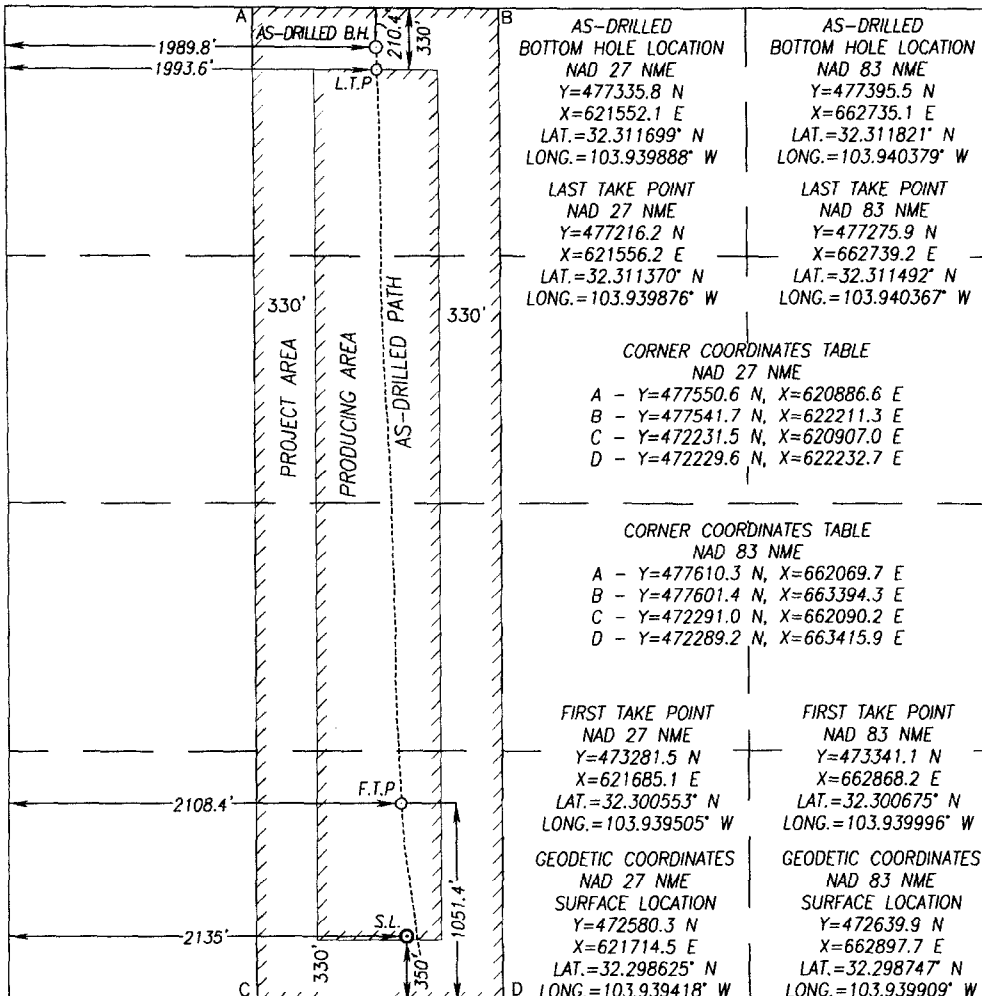
| Surface Location | | | | | | | | | |
|------------------|-----------|-------------|-------------|---------|---------------|------------------|---------------|----------------|-------------|
| UL or lot No. | Section | Township | Range | Lot Idn | Feet from the | North/South line | Feet from the | East/West line | County |
| N | 13 | 23-S | 29-E | | 350 | SOUTH | 2135 | WEST | EDDY |

As-Drilled Bottom Hole Location If Different From Surface

| UL or lot No. | Section | Township | Range | Lot Idn | Feet from the | North/South line | Feet from the | East/West line | County |
|-------------------------------|-----------|-----------------|--------------------|-----------|---------------|------------------|---------------|----------------|-------------|
| C | 13 | 23-S | 29-E | | 210.4 | NORTH | 1989.8 | WEST | EDDY |
| Dedicated Acres 160 | | Joint or Infill | Consolidation Code | Order No. | | | | | |

NO ALLOWABLE WILL BE ASSIGNED TO THIS COMPLETION UNTIL ALL INTERESTS HAVE BEEN CONSOLIDATED OR A NON-STANDARD UNIT HAS BEEN APPROVED BY THE DIVISION

NOTE: AS-DRILLED BOTTOM HOLE PLOTTED FROM DATA FURNISHED BY XTO ENERGY



| | |
|---|--|
| OPERATOR CERTIFICATION | |
| I hereby certify that the information herein is true and complete to the best of my knowledge and belief, and that this organization either owns a working interest or unleased mineral interest in the land including the proposed bottom hole location or has a right to drill this well at this location pursuant to a contract with an owner of such mineral or working interest, or to a voluntary pooling agreement or a compulsory pooling order heretofore entered by the division. | |
| Signature <i>Patricia Donaldi</i> | Date <i>6/28/17</i> |
| Printed Name Patricia Donaldi | |
| E-mail Address Patricia.Donaldi@xtoenergy.com | |
| SURVEYOR CERTIFICATION | |
| I hereby certify that the well location shown on this plat was plotted from field notes of surveys made by me or under my supervision, and that the same is true and correct to the best of my belief. | |
| Date of Survey NOVEMBER 6 2013 | Signature & Seal of Professional Surveyor 3239 |
| <i>Ronald J. Eidson</i> 02/27/2017 | |
| Certificate Number | Gary G. Eidson 12641 Ronald J. Eidson 3239 |
| ACK REL. W.O.:14130230 JWSC W.O.: 17.13.0151 | |