

District I
1625 N. French Dr., Hobbs, NM 88240
Phone: (575) 393-6161 Fax: (575) 393-0720
District II
811 S. First St., Artesia, NM 88210
Phone: (575) 748-1283 Fax: (575) 748-9720
District III
1000 Rio Brazos Road, Aztec, NM 87410
Phone: (505) 334-6178 Fax: (505) 334-6170
District IV
1220 S. St. Francis Dr., Santa Fe, NM 87505
Phone: (505) 476-3460 Fax: (505) 476-3462

State of New Mexico
Energy, Minerals & Natural Resources
Department
OIL CONSERVATION DIVISION
1220 South St. Francis Dr.
Santa Fe, NM 87505

NM OIL CONSERVATION
ARTESIA DISTRICT

FORM C-102
Revised August 1, 2011
Submit one copy to appropriate
District Office

JUL 25 2017

RECEIVED

☐ AMENDED REPORT

WELL LOCATION AND ACREAGE DEDICATION PLAT

¹ API Number 30-015-43723		² Pool Code 98220	³ Pool Name PURPLE SAGE; WOLFCAMP (GAS)
⁴ Property Code 314392	⁵ Property Name PAUL 25-24S-28E RB		⁶ Well Number #225H
⁷ OGRID No. 228937	⁸ Operator Name MATADOR PRODUCTION COMPANY		⁹ Elevation 2919'

¹⁰Surface Location

UL or lot no.	Section	Township	Range	Lot Idn	Feet from the	North/South line	Feet from the	East/West line	County
D	25	24-S	28-E	-	359'	NORTH	247'	WEST	EDDY

UL or lot no.	Section	Township	Range	Lot Idn	Feet from the	North/South line	Feet from the	East/West line	County
A	25	24-S	28-E	-	942'	NORTH	257'	EAST	EDDY

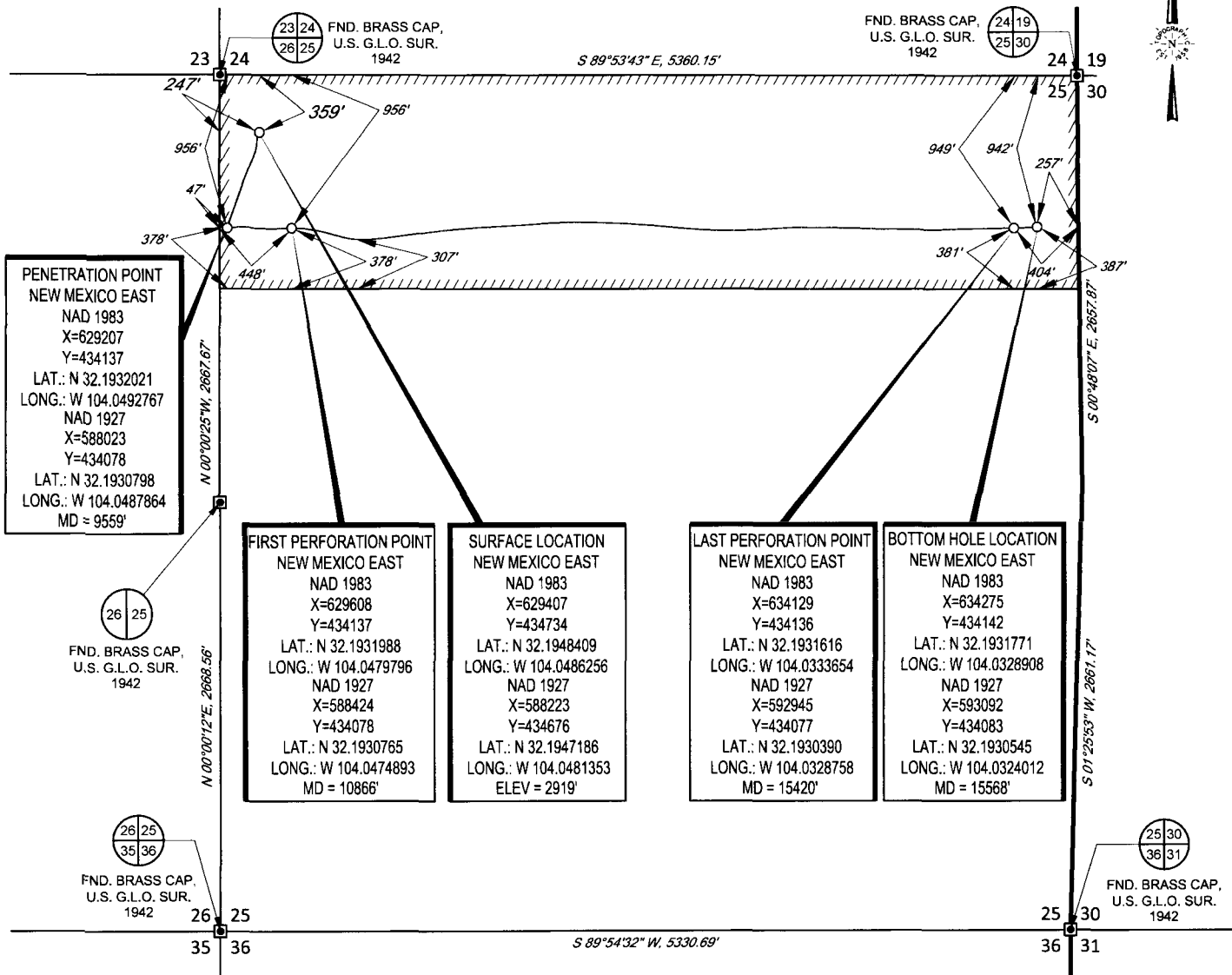
¹² Dedicated Acres 160	¹³ Joint or Infill	¹⁴ Consolidation Code	¹⁵ Order No.
--------------------------------------	-------------------------------	----------------------------------	-------------------------

No allowable will be assigned to this completion until all interests have been consolidated or a non-standard unit has been approved by the division.

<p>¹⁶</p>				<p>¹⁷OPERATOR CERTIFICATION</p> <p>I hereby certify that the information contained herein is true and complete to the best of my knowledge and belief, and that this organization either owns a working interest or unleased mineral interest in the land including the proposed bottom hole location or has a right to drill this well at this location pursuant to a contract with an owner of such a mineral or working interest, or to a voluntary pooling agreement or a compulsory pooling order heretofore entered by the division.</p> <p>Signature: <i>Sara Hartsfield</i> Date: 7/24/17 Printed Name: Sara Hartsfield E-mail Address: shartsfield@matadorresources.com</p>	
<p>PENETRATION POINT NEW MEXICO EAST NAD 1983 X=629207 Y=434137 LAT.: N 32.1932021 LONG.: W 104.0492767 NAD 1927 X=588023 Y=434078 LAT.: N 32.1930798 LONG.: W 104.0487864 MD = 9559'</p>				<p>¹⁸SURVEYOR CERTIFICATION</p> <p>I hereby certify that the well location shown on this plat was plotted from field notes of actual surveys made by me or under my supervision, and that the same is true to the best of my belief.</p> <p>02/26/2016</p> <p>Date of Survey Signature and Seal of Surveyor MICHAEL R. BROWN NEW MEXICO 18329 PROFESSIONAL SURVEYOR Certificate Number</p>	
<p>SURFACE LOCATION NEW MEXICO EAST NAD 1983 X=629407 Y=434734 LAT.: N 32.1948409 LONG.: W 104.0486256 NAD 1927 X=588223 Y=434676 LAT.: N 32.1947186 LONG.: W 104.0481353 ELEV = 2919'</p>				<p>LAST PERFORATION POINT NEW MEXICO EAST NAD 1983 X=634129 Y=434136 LAT.: N 32.1931616 LONG.: W 104.0333654 NAD 1927 X=592945 Y=434077 LAT.: N 32.1930390 LONG.: W 104.0328758 MD = 15420'</p>	
<p>FIRST PERFORATION POINT NEW MEXICO EAST NAD 1983 X=629608 Y=434137 LAT.: N 32.1931988 LONG.: W 104.0479796 NAD 1927 X=588424 Y=434078 LAT.: N 32.1930765 LONG.: W 104.0474893 MD = 10866'</p>				<p>BOTTOM HOLE LOCATION NEW MEXICO EAST NAD 1983 X=634275 Y=434142 LAT.: N 32.1931771 LONG.: W 104.0328908 NAD 1927 X=593092 Y=434083 LAT.: N 32.1930545 LONG.: W 104.0324012 MD = 15568'</p>	

SCALE: 1" = 1000'
0' 500' 1000'

SECTION 25, TOWNSHIP 24-S, RANGE 28-E, N.M.P.M.
EDDY COUNTY, NEW MEXICO

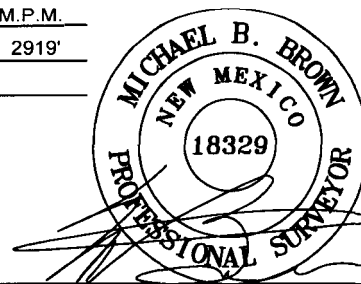


LEASE NAME & WELL NO.: PAUL 25-24S-28E RB #225H
SECTION 25 TWP 24-S RGE 28-E SURVEY N.M.P.M.
COUNTY EDDY STATE NM ELEVATION 2919'
DESCRIPTION 359' FNL & 247' FVL



TOPOGRAPHIC
LOYALTY INNOVATION LEGACY

1400 EVERMAN PARKWAY, Ste. 197 • FT. WORTH, TEXAS 76140
TELEPHONE: (817) 744-7512 • FAX (817) 744-7548
2903 NORTH BIG SPRING • MIDLAND, TEXAS 79705
TELEPHONE: (432) 682-1653 OR (800) 767-1653 • FAX (432) 682-1743
WWW.TOPOGRAPHIC.COM



Michael Blake Brown, P.S. No. 18329
JULY 20, 2017

PAUL 25 24S 28E RB
#225H AS-COMPLETED

DATE: 06/30/17

FILE: AD_PAUL_25-24S-28E_RB_225H_REV1

DRAWN BY: EAH

SHEET: 1 OF 1

REVISION:

MML 07/20/17

NOTES:

1. ORIGINAL DOCUMENT SIZE: 8.5" X 11"
2. ALL BEARINGS, DISTANCES, AND COORDINATE VALUES CONTAINED HEREIN ARE GRID BASED UPON THE NEW MEXICO STATE PLANE COORDINATE SYSTEM, EAST ZONE, U.S. SURVEY FEET, NORTH AMERICAN DATUM 1983.
3. CERTIFICATION IS MADE ONLY TO THE LOCATION OF THIS EASEMENT, IN RELATION TO THE EVIDENCE FOUND DURING A FIELD SURVEY. MADE ON THE GROUND, UNDER MY SUPERVISION, AND USING DOCUMENTATION PROVIDED BY MATADOR PRODUCTION COMPANY. ONLY UTILITIES/EASEMENTS THAT WERE VISIBLE ON THE DATE OF THIS SURVEY, WITHIN/ADJOINING THIS EASEMENT, HAVE BEEN LOCATED AS SHOWN HEREON OF WHICH I HAVE KNOWLEDGE. THIS CERTIFICATION IS LIMITED TO THOSE PERSONS OR ENTITIES SHOWN ON THE FACE OF THIS PLAT AND IS NON-TRANSFERABLE, AND MADE FOR THIS TRANSACTION ONLY.