

Submit 1 Copy To Appropriate District Office

District I - (575) 393-6161  
1625 N. French Dr., Hobbs, NM 88240  
District II - (575) 748-1283  
811 S. First St., Artesia, NM 88210  
District III - (505) 334-6178  
1000 Rio Brazos Rd., Aztec, NM 87410  
District IV - (505) 476-3460  
1220 S. St. Francis Dr., Santa Fe, NM 87505

State of New Mexico  
Energy, Minerals and Natural Resources

OIL CONSERVATION DIVISION  
1220 South St. Francis Dr.  
Santa Fe, NM 87505

Form C-103  
October 13, 2009

WELL API NO. <b>30-015-22218</b>
5. Indicate Type of Lease STATE <input type="checkbox"/> FEE <input checked="" type="checkbox"/>
6. State Oil & Gas Lease No.
7. Lease Name or Unit Agreement Name <b>KEYSTONE</b>
8. Well Number 1
9. OGRID Number <b>229137</b>
10. Pool name or Wildcat <b>BURTON FLAT; BONE SPRING</b>

SUNDRY NOTICES AND REPORTS ON WELLS (DO NOT USE THIS FORM FOR PROPOSALS TO DRILL OR TO DEEPEN OR PLUG BACK TO A DIFFERENT RESERVOIR. USE "APPLICATION FOR PERMIT" (FORM C-101) FOR SUCH PROPOSALS.)	
1. Type of Well: Oil Well <input checked="" type="checkbox"/> Gas Well <input type="checkbox"/> Other	
2. Name of Operator <b>COG OPERATING, LLC</b>	
3. Address of Operator <b>600 W. ILLINOIS AVE, MIDLAND, TX 79701</b>	
4. Well Location Unit Letter <b>G</b> : <b>1980</b> feet from the <b>NORTH</b> line and <b>1980</b> feet from the <b>EAST</b> line Section <b>32</b> Township <b>20S</b> Range <b>28E</b> NMPM County <b>EDDY</b>	
11. Elevation (Show whether DR, BKT, GR, etc.) <b>3212' GR</b>	

RECEIVED  
NM OIL CONSERVATION  
ARTESIA DISTRICT  
JUL 6 2017

12. Check Appropriate Box to Indicate Nature of Notice, Report or Other Data

NOTICE OF INTENTION TO:

PERFORM REMEDIAL WORK ☐ PLUG AND ABANDON ☒  
TEMPORARILY ABANDON ☐ CHANGE PLANS ☐  
PULL OR ALTER CASING ☐ MULTIPLE COMPL ☐  
DOWNHOLE COMMINGLE ☐

OTHER: ☐

SUBSEQUENT REPORT OF:

REMEDIAL WORK ☐ ALTERING CASING ☐  
COMMENCE DRILLING OPNS. ☐ P AND A ☐  
CASING/CEMENT JOB ☐

OTHER: ☐

13. Describe proposed or completed operations. (Clearly state all pertinent details, and give pertinent dates, including estimated date of starting any proposed work). SEE RULE 19.15.7.14 NMAC. For Multiple Completions: Attach wellbore diagram of proposed completion or recompletion.

1. Tag cmt plug @ 6725'.
2. Set 4 1/2" CIBP @ 6170'. Circulate hole w/ MLF. Pressure test csg. Spot 25 sx cmt @ 6170-5900'. - WOC & TAG
3. Perf & Sqz 40 sx cmt @ 5050-4050' (Bone Spring) - WOC & TAG
4. Perf & Sqz 40 sx cmt @ 3060-2960'. WOC & Tag (8 5/8 Shoe)
5. Perf & Sqz 40 sx cmt @ 1950-1850'. (T. Anhy) - WOC & TAG
6. Perf & Sqz 40 sx cmt @ 670-565'. WOC & Tag (13 3/8 Shoe, Yates)
7. Perf & Sqz 40 sx cmt @ 200'-Surface.
8. Cut off well head, verify cmt to surface, weld on Dry Hole Marker.

Approved for plugging of well bore only.  
Liability under bond is retained pending receipt  
of C-103 (Subsequent Report of Well Plugging)  
which may be found at OCD Web Page under  
Forms: www.emnrd.state.nm.us/oecd.

Spud Date:

Rig Release Date:

**WELL MUST BE PLUGGED BY 7/26/18**

I hereby certify that the information above is true and complete to the best of my knowledge and belief.

SIGNATURE Abigail Montgomery TITLE Agent DATE 7/25/17  
Type or print name Abigail Montgomery E-mail address: abbym@bcmadassociates.com PHONE: \_\_\_\_\_  
For State Use Only

APPROVED BY: Robert J. Byrd TITLE COMPLIANCE OFFICER DATE 7/26/2017  
Conditions of Approval (if any):

**SEE ATTACHED LOA-S**

SPUD 10-16-1977  
 Completed 1-25-1978  
 recompleted; AToKa May 1985  
 recompleted; Wolfcamp March 1994  
 recompleted; 1<sup>st</sup> Bone Spring Sand  
 1994

GL 3212'  
 KB 3227'

Cement:

Surface - 695 sx.  
 Circulated.  
 Intermediate - 1100 sx.  
 Circulated  
 Production - 875 sx.  
 TOC 8138'  
 Squeeze - 900 sx. (1)  
 200 sx. (2)

Formation Tops:

Bone Spring 5,006'  
 3<sup>rd</sup> Bone Spring 8405'  
 Wolfcamp 8765'  
 Strawn 10,155'  
 AToKa 10,450'  
 Morrow 10,682'

Tubing (5-11-2007)

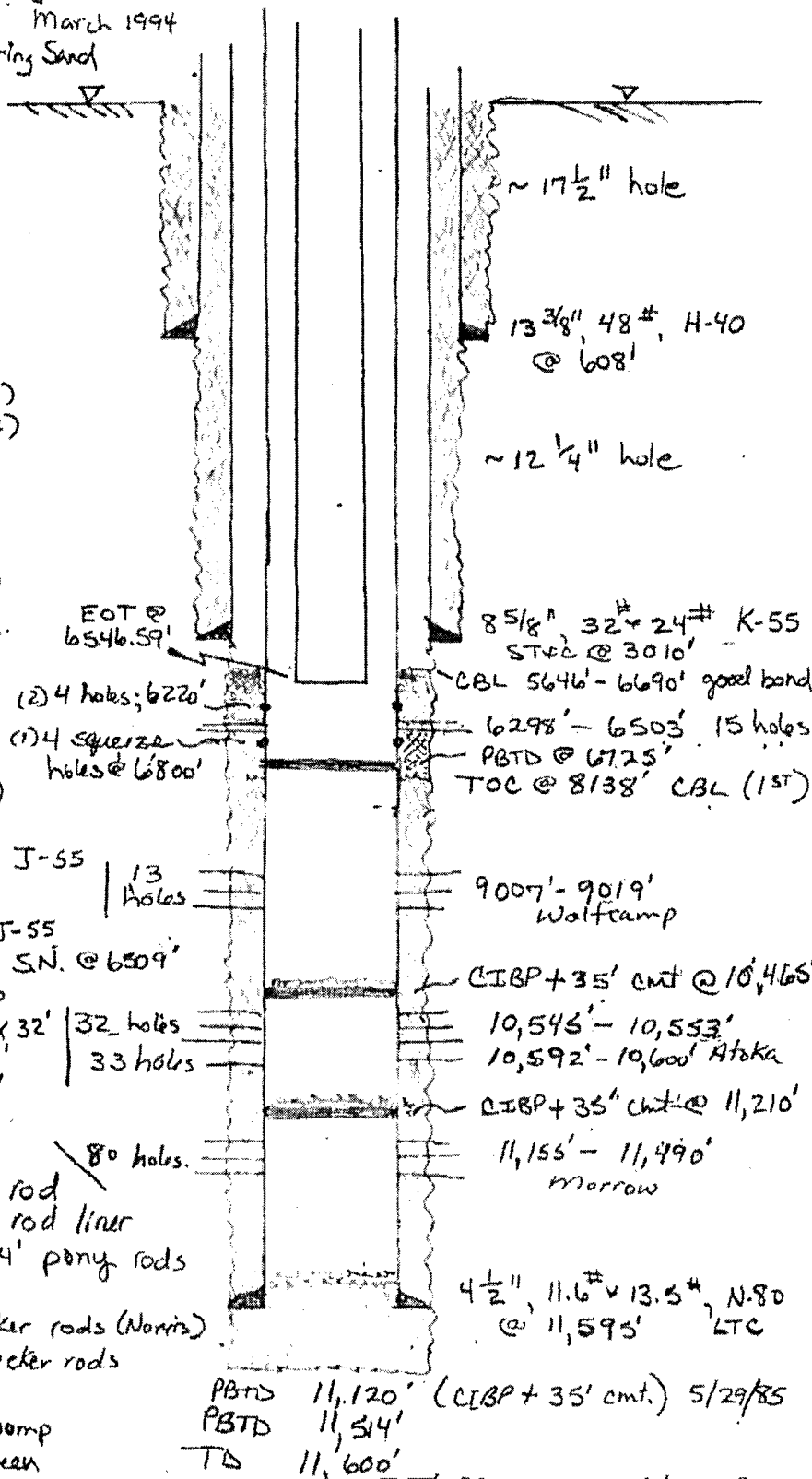
(191 jts) 2 3/8", 4.7#, J-55  
 (1) 2 3/8" x 4 1/2" TAC  
 (12) jts. 2 3/8" 4.7# J-55  
 (1) 2 3/8" mechanical SN. @ 6509'  
 (1) 2 3/8" x 3.9" sub  
 (1) Mud Anchor 2 3/8" x 32'  
 (1) bull plug 2 3/8" x .5'  
 @ 6546.59'

Rods (5-11-2007)  
New 2005

(1) 1.25" x 16' polish rod  
 (1) 1.50" x ' polish rod liner  
 (4) 7/8" x 8', 6', 4', 4' pony rods  
 SH78 (Norris)  
 (68) 7/8" - SH78 sucker rods (Norris)  
 (181) 3/4" - FH78 sucker rods  
 (9) 7/8" - SH78  
 (1) 2 3/8" x 1 1/4" rod pump  
 with 6' sand screen

32.5317345

-104.1980067



Susan Livert October 12, 2015

32.3939819  
-104.2002641

NTS API 30-015-22 8 222176 Keystone #1 G-Sic 32-T205 - R28E NTS

Spud 10-16-1977  
Completed 1-25-1978  
Recompleted; Atoka May 1985  
Recompleted; Wolfcamp March 1994  
Recompleted; 1st Bone Spring Sand 1994

GL 3212'  
KB 3227'

Seam Limit October 12, 2015

7. Perf & Sqz 40 sx cmt @ 200'-Surface.

6. Perf & Sqz 40 sx cmt @ 670-565'. WOC & Tag  
(13 3/8 Shoe, Yates)

5. Perf & Sqz 40 sx cmt @ 1950-1850'. (T. Anhy)  
WOC & TAG

4. Perf & Sqz 40 sx cmt @ 3060-2960'. WOC & Tag (8 5/8 Shoe)

WOC & TAG 3. Perf & Sqz 40 sx cmt @ 5050-4050' (Bone Spring)

2. Set 4 1/2" CIBP @ 6170'. Circulate hole w/ MLF. Pressure test  
csg. Spot 25 sx cmt @ 6170-5900'. WOC & TAG

1. Tag cmt plug @ 6725'.

(191 jbs) 2 3/8" 4.7" J-55 13 holes  
(1) 2 3/8 x 4 1/2 TAC  
(12) jts. 2 3/8 4.7" J-55  
(1) 2 3/8" mechanical SN. @ 6509'  
(1) 2 3/8" x 3.9' sub  
(1) mud anchor 2 3/8" x 32' 32 holes  
(1) bull plug 2 3/8 x .5' 33 holes  
@ 6546-59'

Rods (5-11-2007)  
New 2005

(1) 1.25" x 16' polish rod  
(1) 1.50" x ' polish rod liner  
(4) 7/8" x 8', 6', 4', 4' pony. rods  
SH78 (Normis)  
(68) 7/8" - SH78 sucker rods (Normis)  
(151) 3/4" - FH78 sucker rods  
(9) 7/8" - SH78  
(1) 2 3/8" x 1 1/4" rod pump  
with 6' sand screen

~ 17 1/2" hole

13 3/8" 48" H-40  
@ 608'

~ 12 1/4" hole

8 5/8" 32" 24" K-55  
ST42 @ 3010'

CBL 5646' - 6690' gavel band

6298' - 6503' 15 holes

PBTD @ 6725'

TOC @ 8138' CBL (1st)

9007' - 9019'  
Wolfcamp

CIBP + 35' cmt @ 10,465'

10,545' - 10,553'

10,592' - 10,600' Atoka

CIBP + 35' cmt @ 11,210'

11,155' - 11,490'  
Morrow

4 1/2" 11.6" x 13.5" N.80  
@ 11,670' LTO

## **CONDITIONS FOR PLUGGING AND ABANDONMENT**

### **District II / Artesia N.M.**

The following is a guide or checklist in preparation of a plugging program, this is not all inclusive and care must be exercised in establishing special plugging programs in unique and unusual cases, **Notify NMOCD District Office II at (575)-748-1283 at least 24 hours before beginning work.**

1. A notice of intent to plug and abandon a wellbore is required to be approved before plugging operations are conducted. A cement evaluation tool is required in order to ensure isolation of producing formations, protection of water and correlative rights. A cement bond log or other accepted cement evaluation tool is to be provided to the division for evaluation if one has not been previously run or if the well did not have cement circulated to surface during the original casing cementing job or subsequent cementing jobs.
2. Closed loop system is to be used for entire plugging operation. Upon completion, contents of steel pits are to be hauled to a permitted disposal location.
3. Trucking companies being used to haul oilfield waste fluids to a disposal – commercial or private – shall have an approved NMOCD C-133 permit. A copy of this permit shall be available in each truck used to haul waste products. It is the responsibility of the operator as well as the contractor, to verify that this permit is in place prior to performing work. Drivers shall be able to produce a copy upon request of an NMOCD Field inspector.
4. Filing a subsequent C-103 will serve as notification that the well has been plugged.
5. A final C-103 shall be filed (and a site inspection by NMOCD Inspector to determine if the location is satisfactorily cleaned, all equipment, electric poles and trash has been removed to Meet NMOCD standards) before bonding can be released.
6. **Squeeze pressures are not to exceed 500 psi, unless approval is given by NMOCD.**
7. Produced water **will not** be used during any part of the plugging operation.
8. Mud laden fluids must be placed between all cement plugs mixed at 25 sacks per 100 bbls of water.
9. All cement plugs will be a minimum of 100' in length or a minimum of 25 sacks of cement, whichever is greater. 50' of calculated cement excess required for inside casing plugs and 100% calculated cement excess required on outside casing plugs.
10. **Class 'C' cement will be used above 7500 feet.**
11. **Class 'H' cement will be used below 7500 feet.**
12. **A cement plug is required to be set 50' above and 50' below, casing stubs, DV tools, attempted casing cut offs, cement tops outside casing, salt sections and anywhere the casing is perforated, these plugs require a 4 hour WOC and then will be tagged**
13. **All Casing Shoes Will Be Perforated and Attempted to be Squeezed, cement needs to be 50' above and 50' Below Casing Shoe inside the Production Casing**
14. **A CIBP is to be set within 100' of production perforations, capped with 100' of cement, WOC 4 hours and tag.**
15. **If cement does not exist behind casing strings at recommended formation depths, the casing can be cut and pulled with plugs set at recommended depths. If casing is not pulled, perforations will be shot and cement squeezed behind casing, WOC and tagged. These plugs will be set 50' below formation bottom to 50' above formation top inside the casing**

16. **When setting the top out cement plug in production, intermediate and surface casing, wellbores should remain full at least 30 minutes after plugs are set**
17. A CIBP with 35' of cement may be used in lieu of the 100' plug if set with a bailer. This plug will be placed within 100' of the top perforation, **(WOC 4 hrs and tag)**.
18. **No more than 3000' is allowed between cement plugs in cased hole and 2000' in open hole.**
19. Any Production Formations will be isolated with cement plugs: Some of these are:
  - A) **Strawn, Fusselman, Devonian, Marrow, Atoka, Wolfcamp, Bone springs, Delaware, San Andres, Abo, Glorieta, Any Salt Section, (Potash), Grayburg, Queen, Yates, Tubb, 7-Rivers**
  - B) **Potash---** (In the R-111-P Area (Potash Mine Area), a solid cement plug must be set across the salt section. Fluid used to mix the cement shall be saturated with the salts that are common to the section penetrated and in suitable proportions, not more than 3% calcium chloride (by weight of cement) will be considered the desired mixture whenever possible, **WOC 4 hours and tag, this plug will be 50' below the bottom and 50' above the top of the Formation.**
20. **If cement does not exist behind casing strings at recommended formation depths, the casing can be cut and pulled with plugs set at recommended depths. If casing is not pulled, perforations will be shot and cement squeezed behind casing, WOC and tagged. These plugs will be set 50' below formation bottom to 50' above formation top inside the casing**

#### **DRY HOLE MARKER REQUIRMENTS**

The operator shall mark the exact location of the plugged and abandoned well with a steel marker not less than four inches in diameter, 3' below ground level with a plate of at least ¼" welded to the top of the casing and the dry hole marker welded on the plate with the following information welded on the dry hole marker:

**1. Operator name 2. Lease and Well Number 3.API Number 4. Unit Letter 5. Quarter Section (feet from the North, South, East or West) 6. Section, Township and Range 7. Plugging Date 8. County**

#### **(SPECIAL CASES)**

#### **AGRICULTURE OR PRARIE CHICKEN BREEDING AREAS**

In these areas, a below ground marker is required with all pertinent information mentioned above on a plate, set 3' below ground level, a picture of the plate will be supplied to NMOCD for record, the exact location of the marker (longitude and latitude by GPS) will be provided to NMOCD (We typically require a current survey to verify the GPS)