

DISTRICT I  
1625 N. French Dr., Hobbs, NM 88240  
Phone: (575) 393-6161 Fax: (575) 393-0720

DISTRICT II  
811 S. First St., Artesia, NM 88210  
Phone: (575) 748-1283 Fax: (575) 748-9720

DISTRICT III  
1000 Rio Brazos Road, Aztec, NM 87410  
Phone: (505) 334-6178 Fax: (505) 334-6170

DISTRICT IV  
1220 S. St. Francis Dr., Santa Fe, NM 87505  
Phone: (505) 476-3460 Fax: (505) 476-3462

State of New Mexico  
Energy, Minerals & Natural Resources Department  
OIL CONSERVATION DIVISION  
1220 South St. Francis Dr.  
Santa Fe, New Mexico 87505

Form C-102  
ARTESIA DISTRICT  
August 1, 2011  
Copy to appropriate District Office

AUG 03 2017

AMENDED REPORT

RECEIVED

WELL LOCATION AND ACREAGE DEDICATION PLAT

API Number 30-015-43508	Pool Code 96831	Pool Name CEDAR LAKE; GLORIETA-YESO
Property Code 315935	Property Name CEDAR LAKE FEDERAL CA	Well Number 549H
OGRID No. 873	Operator Name APACHE CORPORATION	Elevation 3795'

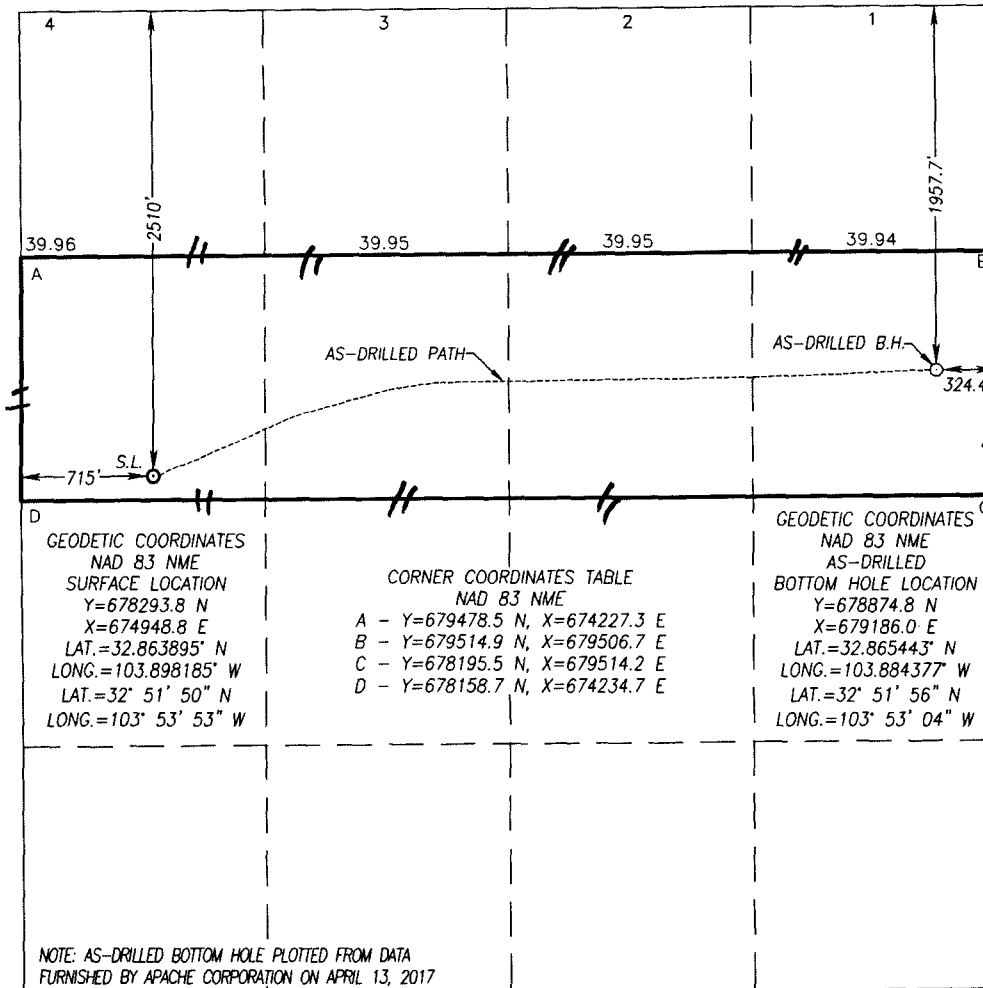
Surface Location

UL or lot No.	Section	Township	Range	Lot Idn	Feet from the	North/South line	Feet from the	East/West line	County
E	5	17-S	31-E		2510	NORTH	715	WEST	EDDY

As-Drilled Bottom Hole Location If Different From Surface

UL or lot No.	Section	Township	Range	Lot Idn	Feet from the	North/South line	Feet from the	East/West line	County
H	5	17-S	31-E		1957.7	NORTH	324.4	EAST	EDDY
Dedicated Acres 160	Joint or Infill	Consolidation Code	Order No.						

NO ALLOWABLE WILL BE ASSIGNED TO THIS COMPLETION UNTIL ALL INTERESTS HAVE BEEN CONSOLIDATED OR A NON-STANDARD UNIT HAS BEEN APPROVED BY THE DIVISION



**OPERATOR CERTIFICATION**

I hereby certify that the information herein is true and complete to the best of my knowledge and belief, and that this organization either owns a working interest or unleased mineral interest in the land including the proposed bottom hole location or has a right to drill this well at this location pursuant to a contract with an owner of such mineral or working interest, or to a voluntary pooling agreement or a compulsory pooling order heretofore entered by the division.

Signature: *Emily Follis* Date: *7/31/17*

Printed Name: *Emily Follis*

E-mail Address: *emily.follis@apachecorp.com*

**SURVEYOR CERTIFICATION**

I hereby certify that the well location shown on this plat was plotted from field notes of actual surveys made by me or under my supervision, and that the same is true and correct to the best of my belief.

FEBRUARY 9, 2015

Date of Survey: *February 9, 2015*

Signature of Professional Surveyor: *Ronald J. Eidson*

Professional Surveyor Seal: *Ronald J. Eidson, New Mexico, 3239*

Certificate Number: *12641*

Signature of Professional Surveyor: *Ronald J. Eidson*

Professional Surveyor Seal: *Ronald J. Eidson, New Mexico, 3239*

ACK REL W.O.:15130285 JWSC W.O.: 17.13.0410