

DISTRICT I
1625 N. French Dr., Hobbs, NM 88240
Phone (575) 393-6161 Fax: (575) 393-0720

DISTRICT II
811 S. First St., Artesia, NM 88210
Phone (505) 748-1283 Fax: (505) 748-9720

DISTRICT III
1000 Rio Brazos Rd., Aztec, NM 87410
Phone (505) 334-8178 Fax: (505) 334-6170

DISTRICT IV
1226 S. St. Francis Dr., Santa Fe, NM 87505
Phone (505) 476-3460 Fax: (505) 476-3462

State of New Mexico
Energy, Minerals and Natural Resources Department

OIL CONSERVATION DIVISION

1226 South St. Francis Dr.
Santa Fe, New Mexico 87505

NM OIL CONSERVATION DIVISION
ARTESIA DISTRICT

AUG 11 2017

Form C-102
Revised August 1, 2011

No appropriate
District Office

WELL LOCATION AND ACREAGE DEDICATION PLAT

☐ AMENDED REPORT

RECEIVED

API Number 30-015-44382	Pool Code	Pool Name
Property Code 318940	Property Name GOODMAN 22	Well Number 1H
OGRID No. 371755	Operator Name PERCUSSION PETROLEUM OPERATING, LLC	Elevation 3471'

Surface Location

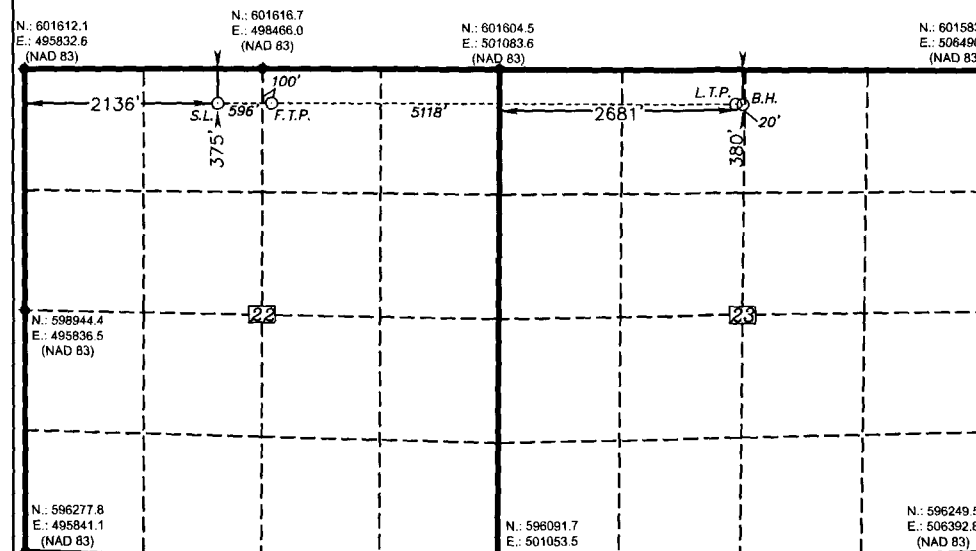
UL or lot No.	Section	Township	Range	Lot Idn	FEET from the	North/South line	FEET from the	East/West line	County
C	22	19 S	25 E		375	NORTH	2136	WEST	EDDY

Bottom Hole Location If Different From Surface

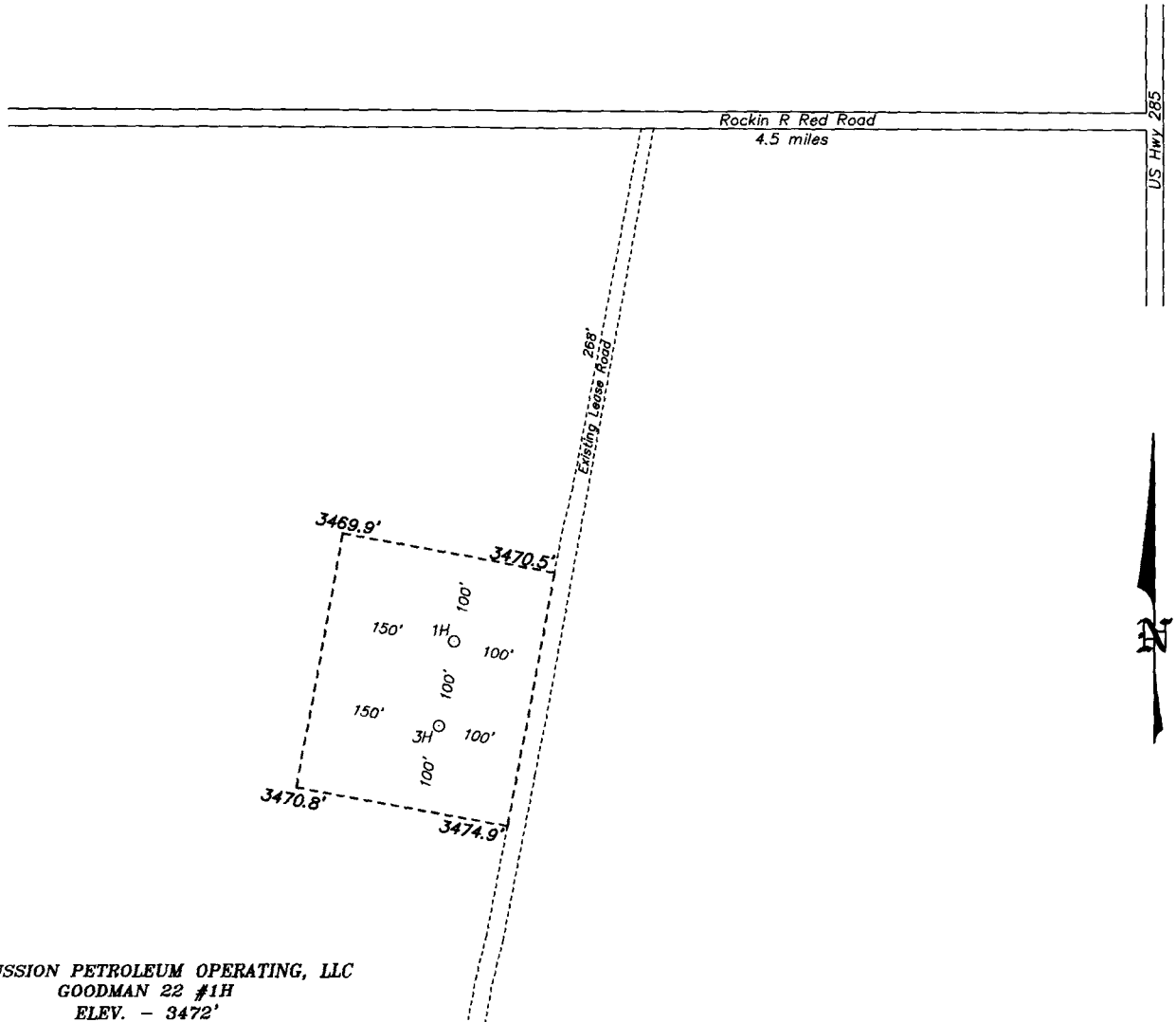
UL or lot No.	Section	Township	Range	Lot Idn	FEET from the	North/South line	FEET from the	East/West line	County
C	23	19 S	25 E		380	NORTH	2681	WEST	EDDY

Dedicated Acres 16.0	Joint or Infill	Consolidation Code	Order No.
--------------------------------	-----------------	--------------------	-----------

NO ALLOWABLE WILL BE ASSIGNED TO THIS COMPLETION UNTIL ALL INTERESTS HAVE BEEN CONSOLIDATED
OR A NON-STANDARD UNIT HAS BEEN APPROVED BY THE DIVISION

SURFACE LOCATION Lat - N 32.652759° Long - W 104.474246° NMSPC - N 601233.5 E 497968.6 (NAD-83)	FIRST TAKE POINT 380' FNL & 2517' FEL Lat - N 32.652769° Long - W 104.472309° NMSPC - N 601236.3 E 498564.7 (NAD-83)	LAST TAKE POINT 380' FNL & 2601' FWL Lat - N 32.652726° Long - W 104.455680° NMSPC - N 601214.4 E 503682.6 (NAD-83)	PROPOSED BOTTOM HOLE LOCATION Lat - N 32.652726° Long - W 104.455420° NMSPC - N 601214.1 E 503762.6 (NAD-83)	OPERATOR CERTIFICATION I hereby certify that the information contained herein is true and complete to the best of my knowledge and belief, and that this organization either owns a working interest or unleased mineral interest in the land including the proposed bottom hole location or has a right to drill this well at this location pursuant to a contract with an owner of such a mineral or working interest, or to a voluntary pooling agreement or a compulsory pooling order heretofore entered by the division. Patrick Wales 8/7/2017 Signature Date Patrick Wales Printed Name pwalles@totalenergyservices.us Email Address
				SURVEYOR CERTIFICATION I hereby certify that the well location shown on this plat was plotted from field notes of actual surveys made by me or under my supervision, and that the same is true and correct to the best of my belief. Date Surveyed Signature & Seal of Professional Surveyor Certificate No. 7977 Scale: 1" = 2000' WO Num.: 33181

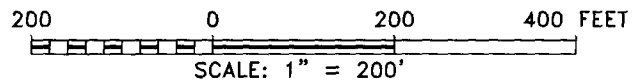
SECTION 22, TOWNSHIP 19 SOUTH, RANGE 25 EAST, N.M.P.M.,
EDDY COUNTY, NEW MEXICO.



PERCUSSION PETROLEUM OPERATING, LLC
GOODMAN 22 #1H
ELEV. - 3472'

Lat - N 32.652759°
Long - W 104.474246°
NMSPCE- N 601233.5
E 497968.6
(NAD-83)

ARTESIA, NM IS ±13 MILES TO THE NORTHEAST OF LOCATION.



Directions to Location:

FROM US 285 AND COUNTY ROAD 23 GO WEST ON
COUNTY ROAD 23 FOR 4.5 MILES TO LEASE ROAD.
THEN GO SOUTHWEST 503 FEET ON LEASE ROAD TO
PROPOSED WELL PAD.

basin
surveys
focused on excellence
in the oilfield

P.O. Box 1786
1120 N. West County Rd.
Hobbs, New Mexico 88241

(575) 393-7316 - Office
(575) 392-2206 - Fax
basinsurveys.com

PERCUSSION PETROLEUM OPERATING, LLC

REF: GOODMAN 22 #1H / WELL PAD TOPO

THE GOODMAN 22 #1H LOCATED 375' FROM
THE NORTH LINE AND 2136' FROM THE WEST LINE OF
SECTION 22, TOWNSHIP 19 SOUTH, RANGE 25 EAST,
N.M.P.M., EDDY COUNTY, NEW MEXICO.