

DISTRICT I
1625 N. French Dr., Hobbs, NM 88240
Phone (575) 393-0161 Fax: (575) 393-0720

DISTRICT II
811 S. First St., Artesia, NM 88210
Phone (575) 748-1253 Fax: (575) 748-0720

DISTRICT III
1000 Rio Brazos Rd., Aztec, NM 87410
Phone (505) 334-6176 Fax: (505) 334-6170

DISTRICT IV
1226 S. St. Francis Dr., Santa Fe, NM 87505
Phone (505) 476-3460 Fax: (505) 476-3462

State of New Mexico
Energy, Minerals and Natural Resources Department

OIL CONSERVATION DIVISION

1226 South St. Francis Dr.
Santa Fe, New Mexico 87505

Form C-102
Revised August 1, 2011

NM OIL CONSERVATION DIVISION
ARTESIA DISTRICT

AUG 11 2017

☐ AMENDED REPORT

WELL LOCATION AND ACREAGE DEDICATION PLAT

RECEIVED

API Number 30-015-44383	Pool Code	Pool Name
Property Code 318940	Property Name GOODMAN 22	Well Number 2H
GRID No. 371755	Operator Name PERCUSSION PETROLEUM OPERATING, LLC	Elevation 3475'

Surface Location

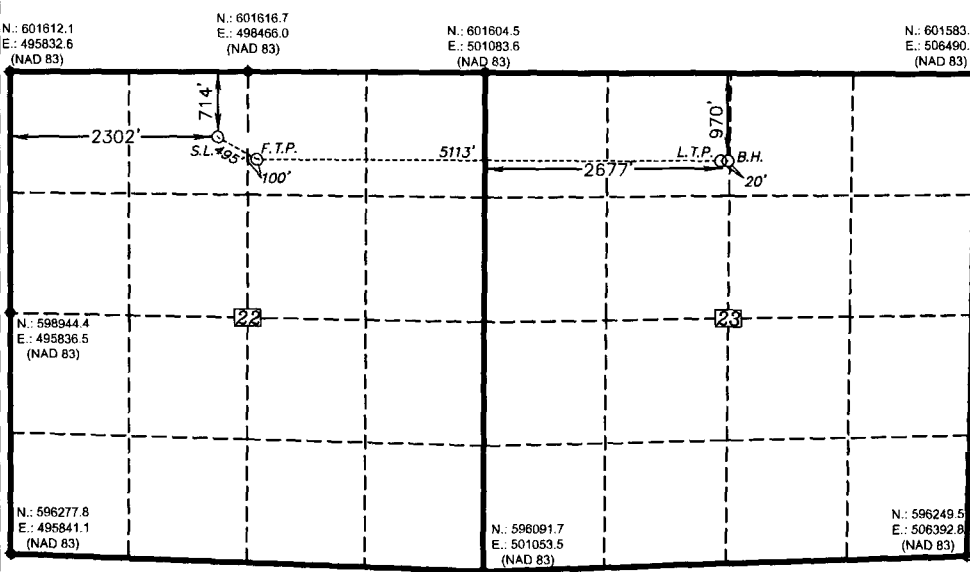
UL or lot No.	Section	Township	Range	Lot Idn	FEET from the	North/South line	FEET from the	East/West line	County
C	22	19 S	25 E		714	NORTH	2302	WEST	EDDY

Bottom Hole Location If Different From Surface

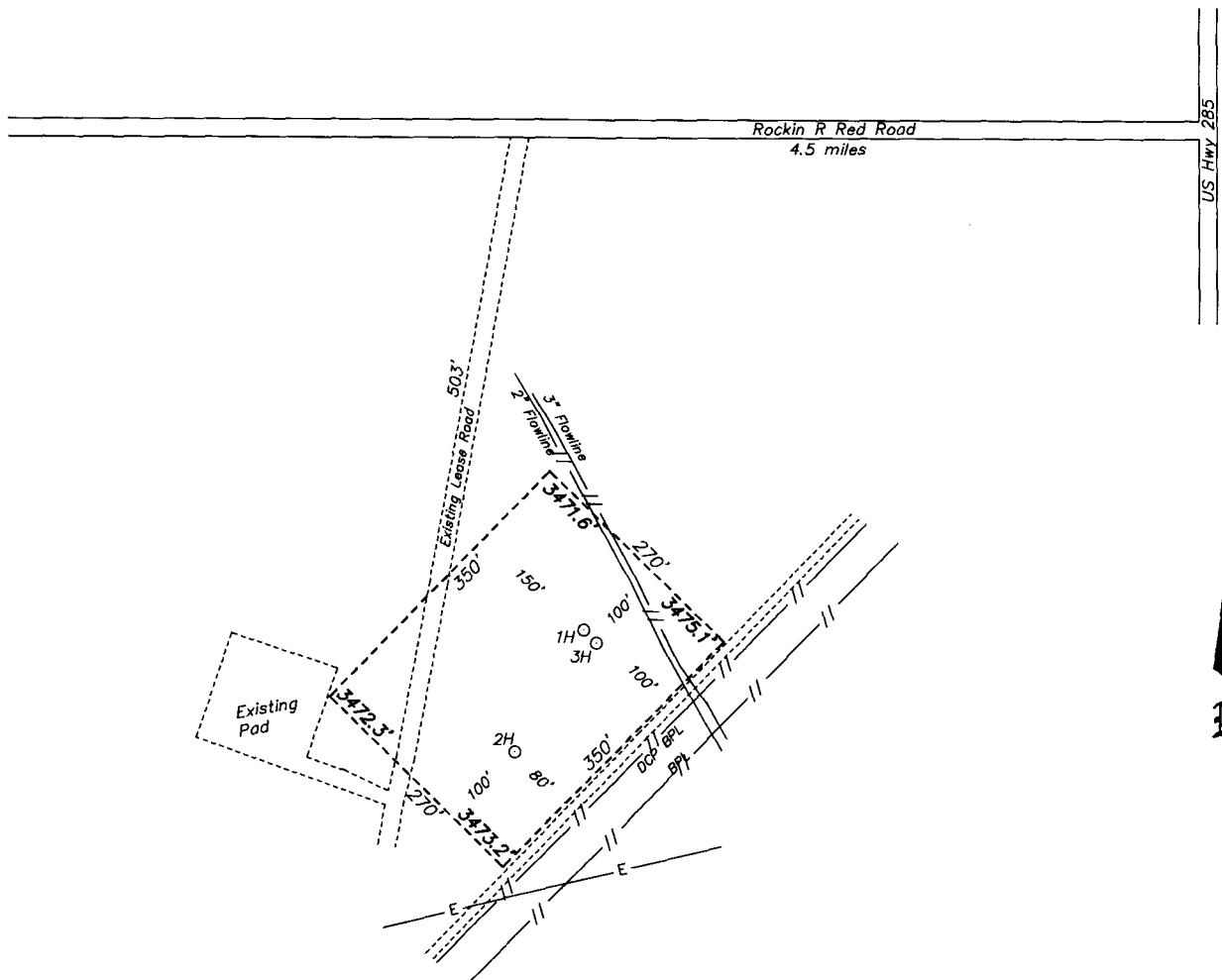
UL or lot No.	Section	Township	Range	Lot Idn	FEET from the	North/South line	FEET from the	East/West line	County
C	23	19 S	25 E		970	NORTH	2677	WEST	EDDY

Dedicated Acres	Joint or Infill	Consolidation Code	Order No.
-----------------	-----------------	--------------------	-----------

NO ALLOWABLE WILL BE ASSIGNED TO THIS COMPLETION UNTIL ALL INTERESTS HAVE BEEN CONSOLIDATED
OR A NON-STANDARD UNIT HAS BEEN APPROVED BY THE DIVISION

SURFACE LOCATION Lat - N 32.651827° Long - W 104.473705° NMSPC- N 600894.3 E 498134.5 (NAD-83)	FIRST TAKE POINT 970' FNL & 2516' FEL Lat - N 32.651147° Long - W 104.472313° NMSPC- E 498562.7 (NAD-83)	LAST TAKE POINT 970' FNL & 2597' FWL Lat - N 32.651104° Long - W 104.455700° NMSPC- N 600624.4 E 503675.6 (NAD-83)	PROPOSED BOTTOM HOLE LOCATION Lat - N 32.651104° Long - W 104.455441° NMSPC- N 600624.1 E 503755.6 (NAD-83)	OPERATOR CERTIFICATION I hereby certify that the information contained herein is true and complete to the best of my knowledge and belief, and that this organization either owns a working interest or unleased mineral interest in the land including the proposed bottom hole location or has a right to drill this well at this location pursuant to a contract with an owner of such a mineral or working interest, or to a voluntary pooling agreement or a compulsory pooling order heretofore entered by the division. <i>Patrick Wales</i> 8/7/2017 Signature Date Patrick Wales Printed Name pwales@totalenergyservices.us Email Address
				SURVEYOR CERTIFICATION I hereby certify that the well location shown on this plat was plotted from field notes of actual surveys made by me or under my supervision and that the same is true and correct to the best of my belief. Date Surveyed Signature of Professional Surveyor Certificate No. 7977 Professional Surveyor BASIC SURVEYING Scale: 1" = 2000' WO Num.: 32898

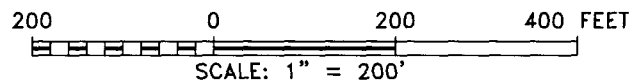
**SECTION 22, TOWNSHIP 19 SOUTH, RANGE 25 EAST, N.M.P.M.,
EDDY COUNTY, NEW MEXICO.**



PERCUSSION PETROLEUM OPERATING, LLC
GOODMAN 22 #2H
ELEV. - 3475'

Lat - N 32.651827°
 Long - W 104.473705°
 NMSPCE- N 600894.3
 E 498134.5
 (NAD-83)

ARTESIA, NM IS ±13 MILES TO THE NORTHEAST OF LOCATION.



Directions to Location:

FROM US 285 AND COUNTY ROAD 23 GO WEST ON
 COUNTY ROAD 23 FOR 4.5 MILES TO LEASE ROAD.
 THEN GO SOUTHWEST 503 FEET ON LEASE ROAD TO
 PROPOSED WELL PAD.

basin
surveys
 focused on excellence
 in the oilfield

P.O. Box 1786 (575) 393-7316 - Office
 1120 N. West County Rd. (575) 392-2206 - Fax
 Hobbs, New Mexico 88241 basin-surveys.com

PERCUSSION PETROLEUM OPERATING, LLC

REF: GOODMAN 22 #2H / WELL PAD TOPO

THE GOODMAN 22 #2H LOCATED 714' FROM
 THE NORTH LINE AND 2302' FROM THE WEST LINE OF
 SECTION 22, TOWNSHIP 19 SOUTH, RANGE 25 EAST,
 N.M.P.M., EDDY COUNTY, NEW MEXICO.

W.O. Number: 32898	Drawn By: K GOAD	Date: 05-15-2017	Survey Date: 05-06-2017	Sheet 1 of 1 Sheets
--------------------	------------------	------------------	-------------------------	---------------------