

**NM OIL CONSERVATION**  
ARTESIA DISTRICT

SEP 19 2017

Form C-102

Revised August 1, 2011

Submit one copy to appropriate

District Office

**RECEIVED**

☒ AMENDED REPORT

District I

1625 N. French Dr., Hobbs, NM 88240  
Phone: (575) 393-6161 Fax: (575) 393-0720

District II

811 S. First St., Artesia, NM 88210  
Phone: (575) 748-1283 Fax: (575) 748-9720

District III

1000 Rio Brazos Road, Aztec, NM 87410  
Phone: (505) 334-6178 Fax: (505) 334-6170

District IV

1220 S. St. Francis Dr., Santa Fe, NM 87505  
Phone: (505) 476-3460 Fax: (505) 476-3462

State of New Mexico  
Energy, Minerals & Natural Resources Department  
OIL CONSERVATION DIVISION  
1220 South St. Francis Dr.  
Santa Fe, NM 87505

**WELL LOCATION AND ACREAGE DEDICATION PLAT**

AS-DRILLED PLAT

<sup>1</sup> API Number 30-015-44135	<sup>2</sup> Pool Code 98220	<sup>3</sup> Pool Name PURPLE SAGE WOLFCAMP GAS POOL
<sup>4</sup> Property Code	<sup>5</sup> Property Name C STATE 16	<sup>6</sup> Well Number 2H
<sup>7</sup> OGRID No. 246289	<sup>8</sup> Operator Name RKI EXPLORATION & PRODUCTION, LLC	<sup>9</sup> Elevation 3135'

<sup>10</sup> Surface Location

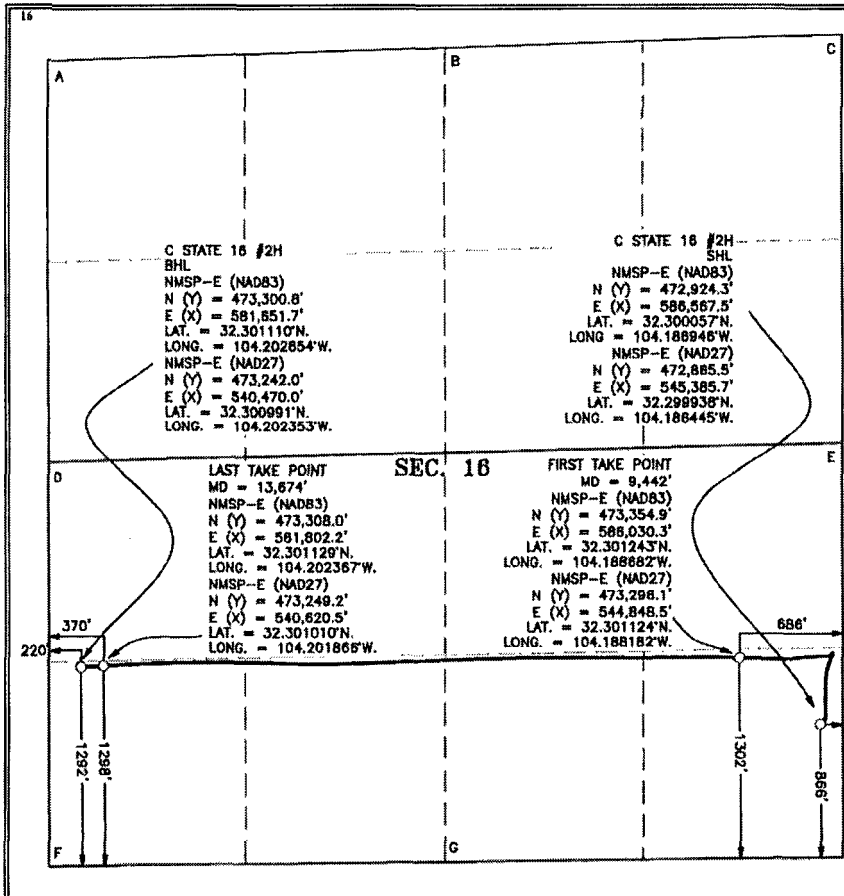
UL or lot no.	Section	Township	Range	Lot Idn	Feet from the	North/South line	Feet from the	East/West line	County
P	16	23 S	27 E		866	SOUTH	150	EAST	EDDY

<sup>11</sup> Bottom Hole Location If Different From Surface

UL or lot no.	Section	Township	Range	Lot Idn	Feet from the	North/South line	Feet from the	East/West line	County
M	16	23 S	27 E		1,292	SOUTH	220	WEST	EDDY

<sup>12</sup> Dedicated Acres 320.0	<sup>13</sup> Joint or Infill	<sup>14</sup> Consolidation Code	<sup>15</sup> Order No.
--	-------------------------------	----------------------------------	-------------------------

No allowable will be assigned to this completion until all interests have been consolidated or a non-standard unit has been approved by the division.



<sup>17</sup> OPERATOR CERTIFICATION

I hereby certify that the information contained herein is true and complete to the best of my knowledge and belief, and that this organization either owns a working interest or unleased mineral interest in the land including the proposed bottom hole location or has a right to drill this well at this location pursuant to a contract with an owner of such a mineral or working interest, or to a voluntary pooling agreement or a compulsory pooling order heretofore entered by the division.

*Crystal Fulton*  
Signature Date

Crystal Fulton

Printed Name

Crystal.Fulton@WPXEnergy.com

E-mail Address

<sup>18</sup> SURVEYOR CERTIFICATION

I hereby certify that the well location shown on this plat was plotted from field notes of actual surveys made by me or under my supervision, and that the same is true and correct to the best of my belief.

09-13-2017

Date of Survey

Signature and Seal of Professional Surveyor:

MARK DILLON HARP 23786  
Certificate Number



RR 2017020194