

UNITED STATES
DEPARTMENT OF THE INTERIOR
BUREAU OF LAND MANAGEMENTFORM APPROVED
OMB NO. 1004-0137
Expires: January 31, 2018**SUNDRY NOTICES AND REPORTS ON WELLS** **SCD Artesia**
Do not use this form for proposals to drill or to re-enter an abandoned well. Use form 3160-3 (APD) for such proposals.5. Lease Serial No.
NMNM114350

6. If Indian, Allottee or Tribe Name

7. If Unit or CA/Agreement, Name and/or No.

SUBMIT IN TRIPLICATE - Other instructions on page 28. Well Name and No.
KLEIN 33 FEDERAL COM 10H9. API Well No.
30-015-42182-00-X110. Field and Pool or Exploratory Area
WILDCAT11. County or Parish, State
EDDY COUNTY, NM

1. Type of Well

☐ Oil Well ☒ Gas Well ☐ Other2. Name of Operator
CIMAREX ENERGY COMPANYContact: ARICKA EASTERLING
E-Mail: aeasterling@cimarex.com3a. Address
202 S CHEYENNE AVE SUITE 1000
TULSA, OK 74103.43463b. Phone No. (include area code)
Ph: 918-560-7060

4. Location of Well (Footage, Sec., T., R., M., or Survey Description)

Sec 33 T26S R27E Lot 1 290FSL 780FEL
32.000214 N Lat, 104.111919 W Lon**12. CHECK THE APPROPRIATE BOX(ES) TO INDICATE NATURE OF NOTICE, REPORT, OR OTHER DATA**

TYPE OF SUBMISSION	TYPE OF ACTION			
<input checked="" type="checkbox"/> Notice of Intent	<input type="checkbox"/> Acidize	<input type="checkbox"/> Deepen	<input type="checkbox"/> Production (Start/Resume)	<input type="checkbox"/> Water Shut-Off
<input type="checkbox"/> Subsequent Report	<input type="checkbox"/> Alter Casing	<input type="checkbox"/> Hydraulic Fracturing	<input type="checkbox"/> Reclamation	<input type="checkbox"/> Well Integrity
<input type="checkbox"/> Final Abandonment Notice	<input type="checkbox"/> Casing Repair	<input type="checkbox"/> New Construction	<input type="checkbox"/> Recomplete	<input checked="" type="checkbox"/> Other
	<input type="checkbox"/> Change Plans	<input type="checkbox"/> Plug and Abandon	<input type="checkbox"/> Temporarily Abandon	Change to Original APD
	<input type="checkbox"/> Convert to Injection	<input type="checkbox"/> Plug Back	<input type="checkbox"/> Water Disposal	

13. Describe Proposed or Completed Operation: Clearly state all pertinent details, including estimated starting date of any proposed work and approximate duration thereof. If the proposal is to deepen directionally or recomplete horizontally, give subsurface locations and measured and true vertical depths of all pertinent markers and zones. Attach the Bond under which the work will be performed or provide the Bond No. on file with BLM/BIA. Required subsequent reports must be filed within 30 days following completion of the involved operations. If the operation results in a multiple completion or recompletion in a new interval, a Form 3160-4 must be filed once testing has been completed. Final Abandonment Notices must be filed only after all requirements, including reclamation, have been completed and the operator has determined that the site is ready for final inspection.

Cimarex Energy Co. respectfully requests approval for a multibowl well head. Please see attached diagram and procedure.

Please update COA for WOC time and Remove section 6B in COA.

Also attached is the previously approved rig layout diagram. The Rig layout, including v-door and flare line may change depending on rig availability. The pad dimensions and orientation will remain the same. There will be no additional disturbance if a rig layout change is necessary to accommodate the drilling rig.

OC 9-12-17
Accepted for record - NMOC

OCD Artesia
SEE ATTACHED FOR
CONDITIONS OF APPR

NM OIL CONSERVATION
ARTESIA DISTRICT

SEP 11 2017

RECEIVED

14. I hereby certify that the foregoing is true and correct.

Electronic Submission #379906 verified by the BLM Well Information System
For CIMAREX ENERGY COMPANY, sent to the Carlsbad
Committed to AFMSS for processing by PRISCILLA PEREZ on 07/07/2017 (17PP0583SE)

Name (Printed/Typed) ARICKA EASTERLING

Title REGULATORY ANALYST

Signature (Electronic Submission)

Date 06/27/2017

THIS SPACE FOR FEDERAL OR STATE OFFICE USE

Approved By ZOTA STEVENS

Title PETROLEUM ENGINEER

Date 08/30/2017

Conditions of approval, if any, are attached. Approval of this notice does not warrant or certify that the applicant holds legal or equitable title to those rights in the subject lease which would entitle the applicant to conduct operations thereon.

Office Carlsbad

Title 18 U.S.C. Section 1001 and Title 43 U.S.C. Section 1212, make it a crime for any person knowingly and willfully to make to any department or agency of the United States any false, fictitious or fraudulent statements or representations as to any matter within its jurisdiction.

(Instructions on page 2)

** BLM REVISED ** BLM REVISED ** BLM REVISED ** BLM REVISED ** BLM REVISED **

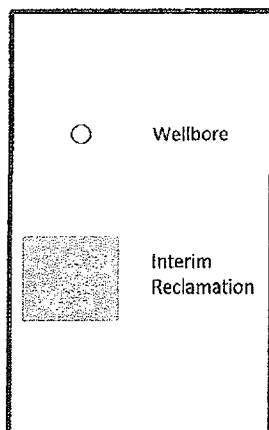
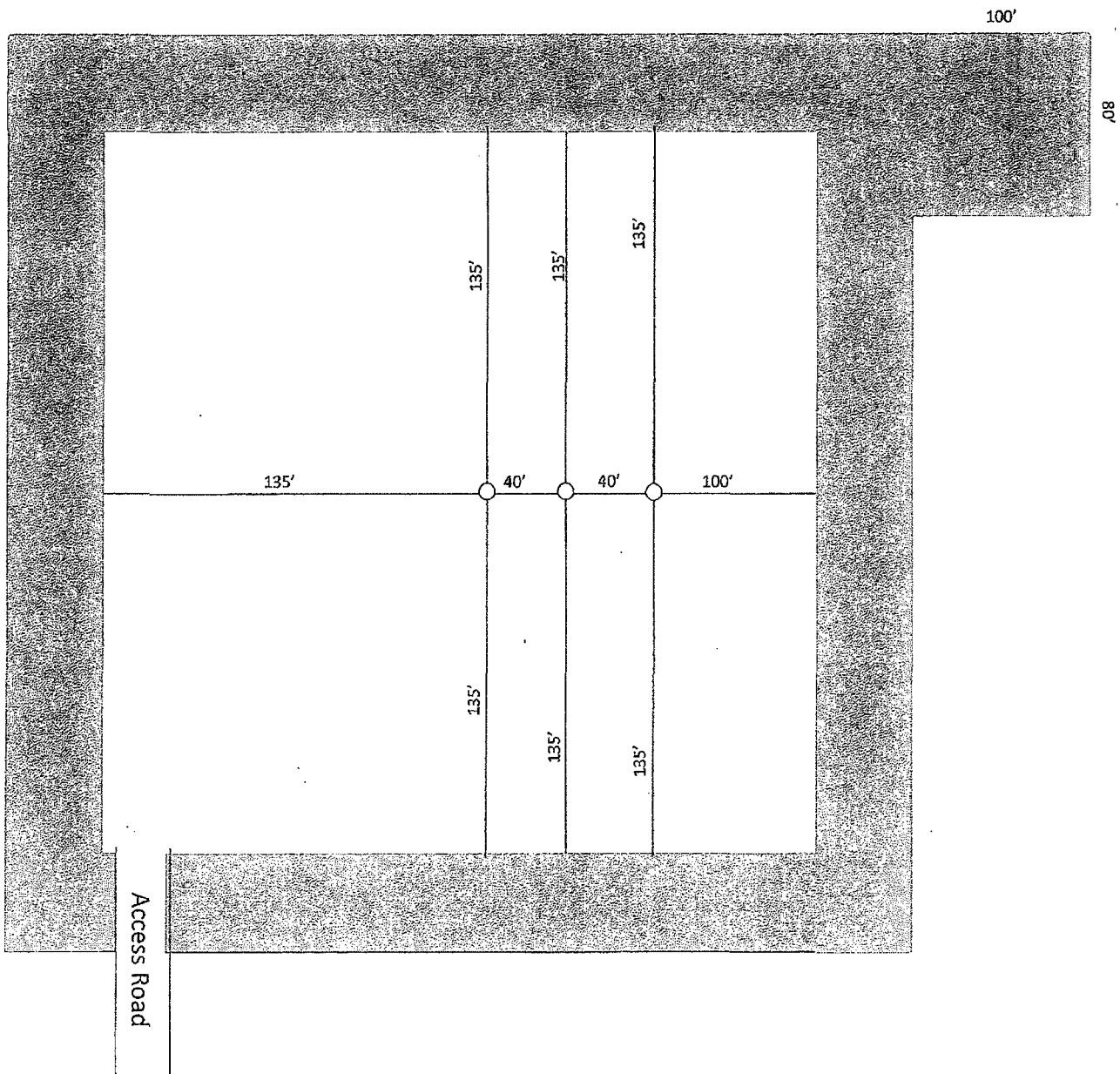
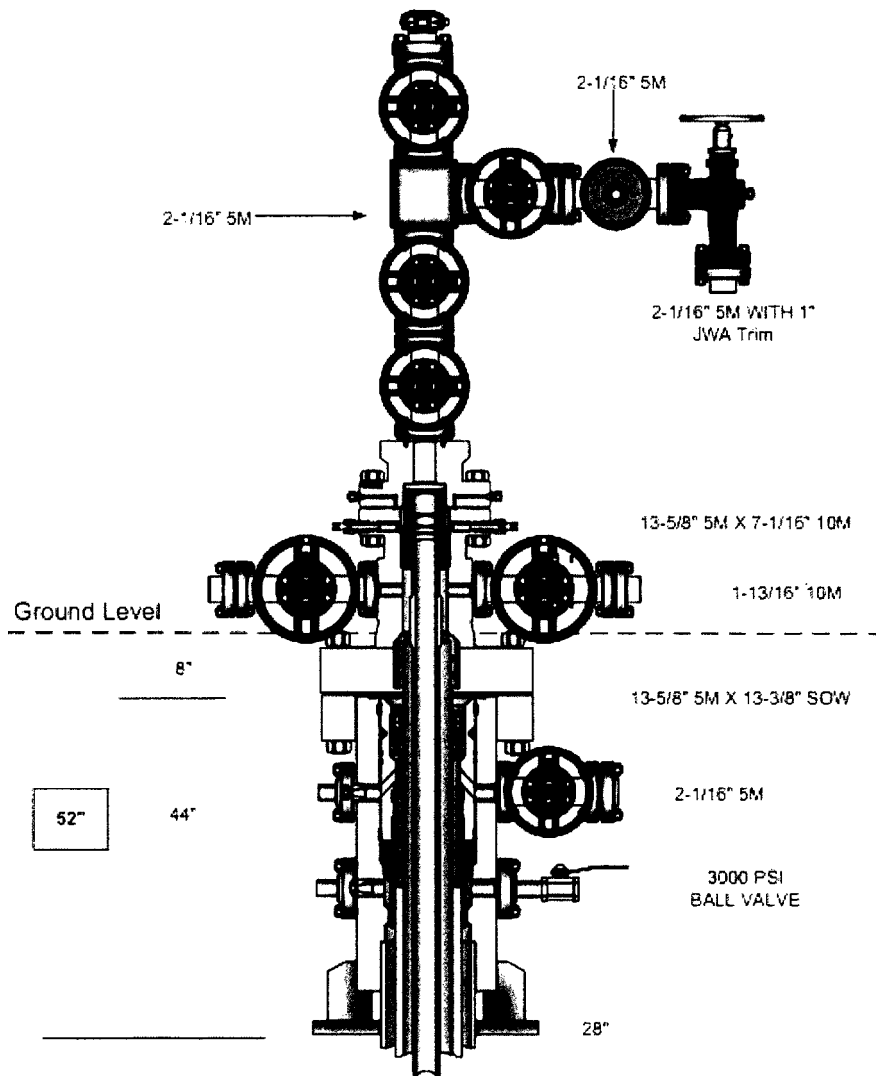


Exhibit D-1
 Interim Reclamation Diagram
Klein 33 Federal Com 10H
 Cimarex Energy Co.
 33-26S-27E
 SHL 210 FSL & 750 FEL
 BHL 660 FNL & 790 FEL
 Eddy County, NM

Cactus Multi-Bowl Wellhead Steps:

1. Drill 17.5" Hole to Surface TD.
2. Trip out of hole.
3. Run and cement 13-3/8" casing.
4. Weld on Cactus Multi-Bowl Wellhead per Manufacturer's procedure.
5. Test weld to 70% of 13-3/8" surface casing.
6. Manufacturer representative will install test plug
7. Test BOPE equipment to 3,000 psi per permitted test pressure for drilling below 9-5/8" intermediate shoe.
8. Install Wear Bushing
9. Drill to 9-5/8" casing shoe
10. Trip out of hole.
11. Remove Wear Bushing.
12. Run 9-5/8" casing and land 9-5/8" casing hanger.
13. Cement casing.
14. Washout stack. Run wash tool to clean hanger.
15. Run and Install Packoff.
16. Test Packoff Seals.
17. Run Wear Bushing.
18. TIH to float collar.
19. Test Casing per COA WOC times. (500 psi compressive strength and 8 hours, whichever is greater)
20. Drill to production hole TD.
21. Trip out of hole.
22. Run 5.5" Production Casing.
23. Cement 5.5" Casing.
24. Set 5.5" Casing Slips.

Note: We will not Test BOP's after welding on the Surface head unless we exceed the 30 day limit per Onshore Order #2.



**PECOS DISTRICT
DRILLING OPERATIONS
CONDITIONS OF APPROVAL**

NM OIL CONSERVATION
ARTESIA DISTRICT

SEP 11 2017

RECEIVED

OPERATOR'S NAME:	Cimarex Energy Co.
LEASE NO.:	NMNM-114350
WELL NAME & NO.:	10H- KLEIN 33 FEDERAL COM
SURFACE HOLE FOOTAGE:	0210'FSL S & 0750'FEL
BOTTOM HOLE FOOTAGE	660'FNL & 0790 FEL Sec. 28, T. 26S, R 27 E
LOCATION:	Section 33 T.26 S., R.27 E., NMPM
COUNTY:	Eddy County, New Mexico

All previous COAs still apply except the following:

Communitization Agreement

- The operator will submit a Communitization Agreement to the Carlsbad Field Office, 620 E Greene St. Carlsbad, New Mexico 88220, at least 90 days before the anticipated date of first production from a well subject to a spacing order issued by the New Mexico Oil Conservation Division. The Communitization Agreement will include the signatures of all working interest owners in all Federal and Indian leases subject to the Communitization Agreement (i.e., operating rights owners and lessees of record), or certification that the operator has obtained the written signatures of all such owners and will make those signatures available to the BLM immediately upon request.
- If the operator does not comply with this condition of approval, the BLM may take enforcement actions that include, but are not limited to, those specified in 43 CFR 3163.1.
- In addition, the well sign shall include the surface and bottom hole lease numbers. When the Communitization Agreement number is known, it shall also be on the sign.

A. DRILLING OPERATIONS REQUIREMENTS

The BLM is to be notified in advance for a representative to witness:

- a. Spudding well (minimum of 24 hours)
- b. Setting and/or Cementing of all casing strings (minimum of 4 hours)
- c. BOPE tests (minimum of 4 hours)

X Eddy County

Call the Carlsbad Field Station, 620 East Greene St., Carlsbad, NM 88220,
(575) 361-2822

1. **Hydrogen Sulfide (H₂S) monitors shall be installed prior to drilling out the surface shoe. If H₂S is detected in concentrations greater than 100 ppm, the Hydrogen Sulfide area shall meet Onshore Order 6 requirements, which includes equipment and personnel/public protection items. If Hydrogen Sulfide is encountered, provide measured values and formations to the BLM.**
2. **Unless the production casing has been run and cemented or the well has been properly plugged, the drilling rig shall not be removed from over the hole without prior approval. . If the drilling rig is removed without approval – an Incident of Non-Compliance will be written and will be a “Major” violation.**
3. **When floor controls are required, (3M or Greater) controls will be on the rig floor, unobstructed, readily accessible to the driller and will be operational at all times during drilling and/or completion activities. Rig floor is defined as the area immediately around the rotary table; the area immediately above the substructure on which the draw works are located, this does not include the dog house or stairway area.**
4. **The record of the drilling rate along with the GR/N well log run from TD to surface (horizontal well – vertical portion of hole) shall be submitted to the BLM office as well as all other logs run on the borehole 30 days from completion. If available, a digital copy of the logs is to be submitted in addition to the paper copies. The Rustler top and top and bottom of Salt are to be recorded on the Completion Report.**

B. CASING

Changes to the approved APD casing program need prior approval if the items substituted are of lesser grade or different casing size or are Non-API. The Operator can exchange the components of the proposal with that of superior strength (i.e. changing from J-55 to N-80, or from 36# to 40#). Changes to the approved cement program need prior approval if the altered cement plan has less volume or strength or if the changes are substantial (i.e. Multistage tool, ECP, etc.). The initial wellhead installed on the well will remain on the well with spools used as needed.

Centralizers required on surface casing per Onshore Order 2.III.B.1.f.

Wait on cement (WOC) for Water Basin:

After cementing but before commencing any tests, the casing string shall stand cemented under pressure until both of the following conditions have been met: 1) cement reaches a minimum compressive strength of 500 psi at the shoe, 2) until cement has been in place at least 8 hours. WOC time will be recorded in the driller's log. See individual casing strings for details regarding lead cement slurry requirements.

No pea gravel permitted for remedial or fall back remedial without prior authorization from the BLM engineer.

Medium Cave/Karst

Possibility of water flows in the Delaware and Castile.

Possibility of lost circulation in the Salado, and Delaware.

Abnormal pressures may be encountered with in Bone Spring formations.

1. The **13-3/8 inch** surface casing shall be set at approximately 400 feet (**in a competent bed below the Magenta Dolomite, which is a Member of the Rustler, and if salt is encountered, set casing at least 25 feet above the salt**) and cemented to the surface.
 - a. If cement does not circulate to the surface, the appropriate BLM office shall be notified and a temperature survey utilizing an electronic type temperature survey with surface log readout will be used or a cement bond log shall be run to verify the top of the cement. Temperature survey will be run a minimum of six hours after pumping cement and ideally between 8-10 hours after completing the cement job. **Additional cement maybe required. Excess cement calculates only 20%.**
 - b. **Wait on cement (WOC) time for a primary cement job is to include the lead cement slurry.**
 - c. Wait on cement (WOC) time for a remedial job will be a minimum of 4 hours after bringing cement to surface or 500 pounds compressive strength, whichever is greater.
 - d. If cement falls back, remedial cementing will be done prior to drilling out that string.

Intermediate casing shall be kept fluid filled while running into hole to meet BLM minimum collapse requirements.

2. The minimum required fill of cement behind the **9-5/8 inch** intermediate casing which shall be set at approximately 2000 feet, is:
 - ☒ Cement to surface. If cement does not circulate see B.1.a, c-d above. **Wait on cement (WOC) time for a primary cement job is to include the lead cement slurry due to cave/karst.**
3. The minimum required fill of cement behind the **5-1/2 inch** production casing is:
 - ☒ Cement should tie-back at least 100 feet into previous casing string. Operator shall provide method of verification. **Additional cement maybe required. Excess cement calculates only 16%.**

4. If hardband drill pipe is rotated inside casing, returns will be monitored for metal. If metal is found in samples, drill pipe will be pulled and rubber protectors which have a larger diameter than the tool joints of the drill pipe will be installed prior to continuing drilling operations.

C. PRESSURE CONTROL

1. All blowout preventer (BOP) and related equipment (BOPE) shall comply with well control requirements as described in Onshore Oil and Gas Order No. 2 and API RP 53.
2. If a variance is approved for a flexible hose to be installed from the BOP to the choke manifold, the following requirements apply: The flex line must meet the requirements of API 16C. Check condition of flexible line from BOP to choke manifold, replace if exterior is damaged or if line fails test. Line to be as straight as possible with no hard bends and is to be anchored according to Manufacturer's requirements. The flexible hose can be exchanged with a hose of equal size and equal or greater pressure rating. Anchor requirements, specification sheet and hydrostatic pressure test certification matching the hose in service, to be onsite for review. These documents shall be posted in the company man's trailer and on the rig floor.

Operator has proposed a multi-bowl wellhead assembly. This assembly will only be tested when installed on the surface casing. Minimum working pressure of the blowout preventer (BOP) and related equipment (BOPE) required for drilling below the surface casing shoe shall be 3000 (3M) psi.

- a. **Wellhead shall be installed by manufacturer's representatives, submit documentation with subsequent sundry.**
 - b. **If the welding is performed by a third party, the manufacturer's representative shall monitor the temperature to verify that it does not exceed the maximum temperature of the seal.**
 - c. **Manufacturer representative shall install the test plug for the initial BOP test.**
 - d. **If the cement does not circulate and one inch operations would have been possible with a standard wellhead, the well head shall be cut off, cementing operations performed and another wellhead installed.**
3. The appropriate BLM office shall be notified a minimum of 4 hours in advance for a representative to witness the tests.
 - a. In a water basin, for all casing strings utilizing slips, these are to be set as soon as the crew and rig are ready and any fallback cement remediation has been done. The casing cut-off and BOP installation can be initiated four hours after installing the slips, which will be approximately six hours after bumping the

plug. For those casing strings not using slips, the minimum wait time before cut-off is eight hours after bumping the plug. BOP/BOPE testing can begin after cut-off or once cement reaches 500 psi compressive strength (including lead when specified), whichever is greater. However, if the float does not hold, cut-off cannot be initiated until cement reaches 500 psi compressive strength (including lead when specified).

- b. The tests shall be done by an independent service company utilizing a test plug.
- c. The test shall be run on a 5000 psi chart for a 2-3M BOP/BOP, on a 10000 psi chart for a 5M BOP/BOPE and on a 15000 psi chart for a 10M BOP/BOPE. If a linear chart is used, it shall be a one hour chart. A circular chart shall have a maximum 2 hour clock. If a twelve hour or twenty-four hour chart is used, tester shall make a notation that it is run with a two hour clock.
- d. The results of the test shall be reported to the appropriate BLM office.
- e. All tests are required to be recorded on a calibrated test chart. **A copy of the BOP/BOPE test chart and a copy of independent service company test will be submitted to the appropriate BLM office.**
- f. The BOP/BOPE test shall include a low pressure test from 250 to 300 psi. The test will be held for a minimum of 10 minutes if test is done with a test plug and 30 minutes without a test plug. This test shall be performed prior to the test at full stack pressure.

D. DRILL STEM TEST

If drill stem tests are performed, Onshore Order 2.III.D shall be followed.

E. WASTE MATERIAL AND FLUIDS

All waste (i.e. drilling fluids, trash, salts, chemicals, sewage, gray water, etc.) created as a result of drilling operations and completion operations shall be safely contained and disposed of properly at a waste disposal facility. No waste material or fluid shall be disposed of on the well location or surrounding area.

Porto-johns and trash containers will be on-location during fracturing operations or any other crew-intensive operations.

ZS 090517