

# NM OIL CONSERVATION

ARTESIA DISTRICT

OCT 12 2017

Form C-102

Revised August 1, 2011

RECEIVED

Submit one copy to appropriate District Office

DISTRICT I  
1625 N. French Dr., Hobbs, NM 88240  
Phone: (575) 393-6161 Fax: (575) 393-0720  
DISTRICT II  
811 S. First St., Artesia, NM 88210  
Phone: (575) 748-1283 Fax: (575) 748-9720  
DISTRICT III  
1000 Rio Brazos Road, Aztec, NM 87410  
Phone: (505) 334-6178 Fax: (505) 334-6170  
DISTRICT IV  
1220 S. St. Francis Dr., Santa Fe, NM 87505  
Phone: (505) 476-3460 Fax: (505) 476-3462

State of New Mexico  
Energy, Minerals & Natural Resources Department  
OIL CONSERVATION DIVISION  
1220 South St. Francis Dr.  
Santa Fe, New Mexico 87505

AMENDED REPORT

## WELL LOCATION AND ACREAGE DEDICATION PLAT

API Number 30-015-43360	Pool Code 98220	Pool Name PURPLE SAGE; WOLF CAMP
Property Code NM 37294	Property Name 20702 HARROUN RANCH FEDERAL COM	Well Number 2H
OGRID No. 260297	Operator Name BTA OIL PRODUCERS	Elevation 2966'

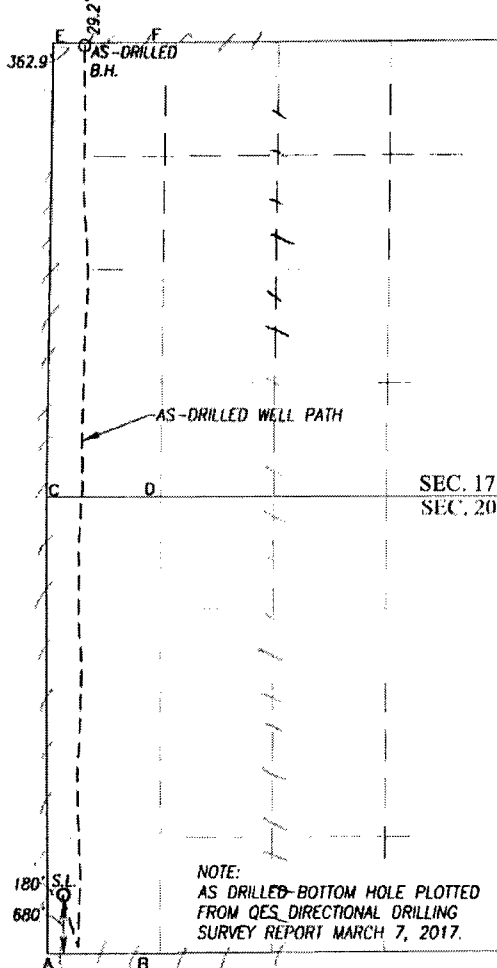
### Surface Location

UL or lot No.	Section	Township	Range	Lot Idn	Feet from the	North/South line	Feet from the	East/West line	County
M	20	23-S	29-E		680	SOUTH	180	WEST	EDDY

### As-Drilled Bottom Hole Location If Different From Surface

UL or lot No.	Section	Township	Range	Lot Idn	Feet from the	North/South line	Feet from the	East/West line	County
D	17	23-S	29-E		29.2	NORTH	362.9	WEST	EDDY
Dedicated Acres 640	Joint or Infill	Consolidation Code	Order No.						

NO ALLOWABLE WILL BE ASSIGNED TO THIS COMPLETION UNTIL ALL INTERESTS HAVE BEEN CONSOLIDATED OR A NON-STANDARD UNIT HAS BEEN APPROVED BY THE DIVISION



SCALE: 1"=2000'

AS-DRILLED AS-DRILLED  
BOTTOM HOLE LOCATION BOTTOM HOLE LOCATION  
NAD 83 NME NAD 27 NME  
Y= 477493.3 N Y= 477433.7 N  
X= 639964.7 E X= 598781.7 E  
LAT.=32.312298° N LAT.=32.312177° N  
LONG.=104.014083° W LONG.=104.013590° W

### CORNER COORDINATES TABLE

NAD 27 NME  
A - Y= 466830.5 N, X= 598366.4 E  
B - Y= 466841.9 N, X= 599669.7 E  
C - Y= 472171.8 N, X= 598349.1 E  
D - Y= 472176.3 N, X= 599672.6 E  
E - Y= 477459.5 N, X= 598419.2 E  
F - Y= 477471.7 N, X= 599735.2 E

### CORNER COORDINATES TABLE

NAD 83 NME  
A - Y= 466889.9 N, X= 639549.6 E  
B - Y= 466901.3 N, X= 640852.9 E  
C - Y= 472231.2 N, X= 639532.2 E  
D - Y= 472235.8 N, X= 640855.7 E  
E - Y= 477519.1 N, X= 639602.1 E  
F - Y= 477531.4 N, X= 640918.1 E

GEODETIC COORDINATES GEODETIC COORDINATES  
NAD 83 NME NAD 27 NME  
SURFACE LOCATION SURFACE LOCATION  
Y= 467571.3 N Y= 467511.9 N  
X= 639727.0 E X= 598543.8 E  
LAT.=32.285026° N LAT.=32.284904° N  
LONG.=104.014947° W LONG.=104.014455° W

### OPERATOR CERTIFICATION

I hereby certify that the information herein is true and complete to the best of my knowledge and belief, and that this organization either owns a working interest or unleased mineral interest in the land including the proposed bottom hole location or has a right to drill this well at this location pursuant to a contract with an owner of such mineral or working interest, or to a voluntary pooling agreement or a compulsory pooling order heretofore entered by the division.

Signature: *Katy Reddell* Date: 10/12/17

Printed Name: Katy Reddell

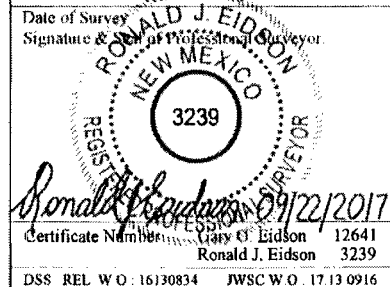
E-mail Address: kreddell@btaoil.com

### SURVEYOR CERTIFICATION

I hereby certify that the well location shown on this plat was plotted from field notes of actual surveys made by me or under my supervision, and that the same is true and correct to the best of my belief.

OCTOBER 20, 2016

Date of Survey: Signature: *Ronald J. Eidson*



Certificate Number: 12641  
Ronald J. Eidson 3239

DSS REL W.O.: 16130834 JWSC W.O.: 17.13 0916