

**NM OIL CONSERVATION
ARTESIA DISTRICT**

DISTRICT I
1625 N. French Dr., Hobbs, NM 88240
Phone (505) 393-6161 Fax: (505) 393-0720

DISTRICT II
811 S. First St., Artesia, NM 88210
Phone (505) 748-1263 Fax: (505) 748-0720

DISTRICT III
1000 Rio Brazos Rd., Aztec, NM 87410
Phone (505) 334-6178 Fax: (505) 334-6170

DISTRICT IV
1220 S. St. Francis Dr., Santa Fe, NM 87505
Phone (505) 476-3460 Fax: (505) 476-3462

State of New Mexico **OCT 05 2017**
Energy, Minerals and Natural Resources Department

Form C-102
Revised August 11, 2011

Submit one copy to appropriate
District Office

OIL CONSERVATION DIVISION
1220 South St. Francis Dr.
Santa Fe, New Mexico 87505

WELL LOCATION AND ACREAGE DEDICATION PLAT

☐ AMENDED REPORT

API Number 30-015-44276	Pool Code 26770	Pool Name Fren Glorieta Yeso
Property Code 319558	Property Name NOSLER 12 FED MO	Well Number 8H
OGRID No. 013837	Operator Name MACK ENERGY CORPORATION	Elevation 3950'

Surface Location

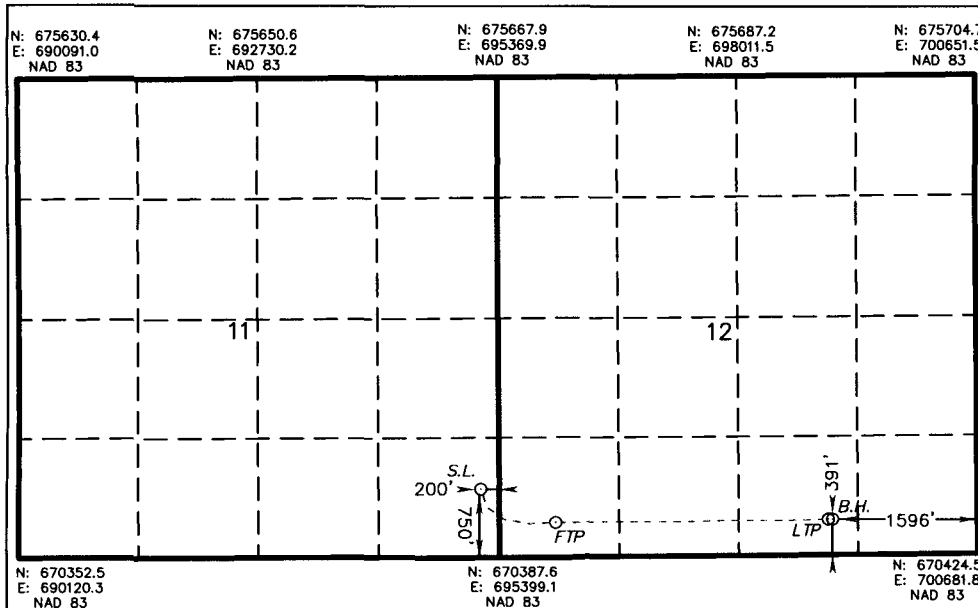
UL or lot No.	Section	Township	Range	Lot Idn	FEET from the	SOUTH/NORTH LINE	FEET from the	East/WEST LINE	County
P	11	17 S	31 E		750	SOUTH	200	EAST	EDDY

Bottom Hole Location If Different From Surface

UL or lot No.	Section	Township	Range	Lot Idn	FEET from the	SOUTH/NORTH LINE	FEET from the	East/WEST LINE	County
O	12	17 S	31 E		391	SOUTH	1596	EAST	EDDY

Dedicated Acres	Joint or Infill	Consolidation Code	Order No.
120			

NO ALLOWABLE WILL BE ASSIGNED TO THIS COMPLETION UNTIL ALL INTERESTS HAVE BEEN CONSOLIDATED
OR A NON-STANDARD UNIT HAS BEEN APPROVED BY THE DIVISION



OPERATOR CERTIFICATION

I hereby certify that the information contained herein is true and complete to the best of my knowledge and belief, and that this organization either owns a working interest or unleased mineral interest in the land including the proposed bottom hole location or has a right to drill this well at this location pursuant to a contract with an owner of such a mineral or working interest, or to a voluntary pooling agreement or a compulsory pooling order heretofore entered by the division.

Jerry W. Sherrell 10/5/17
Signature Date

Jerry w. Sherrell
Printed Name

jerrys@mec.com
Email Address

SURVEYOR CERTIFICATION

I hereby certify that the well location shown on this plat was plotted from field notes of actual surveys made by me or under my supervision, and that the same is true and correct to the best of my belief.

SEPTEMBER 18 2017

Date Surveyed
Signature of Professional Surveyor

Professional Surveyor

Certificate No. Garry Land Survey 7977

0' 1000' 2000' 3000' 4000'
SCALE: 1" = 2000'
WO Num.: 33249

SURFACE LOCATION Lat - N 32.843975° Long - W 103.832359° NMSPC- E 695195.1 (NAD-83) (NAVD88)	FIRST TAKE POINT 379' FSL & 616' FWL Lat - N 32.942961° Long - W 103.829703° NMSPC- E 696012.6 (NAD-83) (NAVD88)	LAST TAKE POINT 390' FSL & 1643' FEL Lat - N 32.843007° Long - W 103.819856° NMSPC- E 699036.6 (NAD-83) (NAVD88)	BOTTOM HOLE LOCATION Lat - N 32.843010° Long - W 103.819703° NMSPC- E 69803.8 (NAD-83) (NAVD88)
--	---	---	---

