

NM OIL CONSERVATION
ARTESIA DISTRICT

District I
1625 N. French Dr., Hobbs, NM 88240
Phone: (575) 393-6161 Fax: (575) 393-0720
District II
811 S. First St., Artesia, NM 88210
Phone: (575) 748-1283 Fax: (575) 748-9720
District III
1000 Rio Brazos Road, Aztec, NM 87410
Phone: (505) 334-6178 Fax: (505) 334-6170
District IV
1220 S. St. Francis Dr., Santa Fe, NM 87505
Phone: (505) 476-3460 Fax: (505) 476-3462

State of New Mexico
Energy, Minerals & Natural Resources Department
OIL CONSERVATION DIVISION
1220 South St. Francis Dr.
Santa Fe, NM 87505

OCT 12 2017

Form C-102

Revised August 1, 2011

RECEIVED Submit one copy to appropriate
District Office

☐ AMENDED REPORT

WELL LOCATION AND ACREAGE DEDICATION PLAT

¹ API Number 30-015-4471	² Pool Code 98210	³ Pool Name STRATAGRAPHIC
⁴ Property Code 319743	⁵ Property Name TATER TOT STATE 2 VDW	
⁷ OGRID No. 6137	⁸ Operator Name DEVON ENERGY PRODUCTION COMPANY, L.P.	⁶ Well Number 1 ⁹ Elevation 3059.2

¹⁰ Surface Location

UL or lot no.	Section	Township	Range	Lot Idn	Feet from the	North/South line	Feet from the	East/West line	County
N	2	24 S	29E		470	SOUTH	1345	WEST	EDDY

¹¹ Bottom Hole Location If Different From Surface

UL or lot no.	Section	Township	Range	Lot Idn	Feet from the	North/South line	Feet from the	East/West line	County

¹² Dedicated Acres	¹³ Joint or Infill	¹⁴ Consolidation Code	¹⁵ Order No.

No allowable will be assigned to this completion until all interests have been consolidated or a non-standard unit has been approved by the division.

¹⁷ OPERATOR CERTIFICATION I hereby certify that the information contained herein is true and complete to the best of my knowledge and belief, and that this organization either owns a working interest or unleased mineral interest in the land including the proposed bottom hole location or has a right to drill this well at this location pursuant to a contract with an owner of such a mineral or working interest, or to a voluntary pooling agreement or a compulsory pooling order heretofore entered by the division. Signature: <u>Erin Workman</u> Date: 10/12/2017 Printed Name: Erin Workman E-mail Address: Erin.workman@dmv.com		
¹⁸ SURVEYOR CERTIFICATION I hereby certify that the well location shown on this plat was plotted from field notes of actual surveys made by me or under my supervision, and that the same is true and correct to the best of my belief. SEPTEMBER 30, 2017 Date of Survey: _____ Signature and Seal of Professional Surveyor: <u>[Signature]</u> Certificate Number: FILMON F. JARAMILLO, PLS 12797 SURVEY NO. 5590		

N89°52'15"E 2653.86 FT N89°52'16"E 2651.86 FT

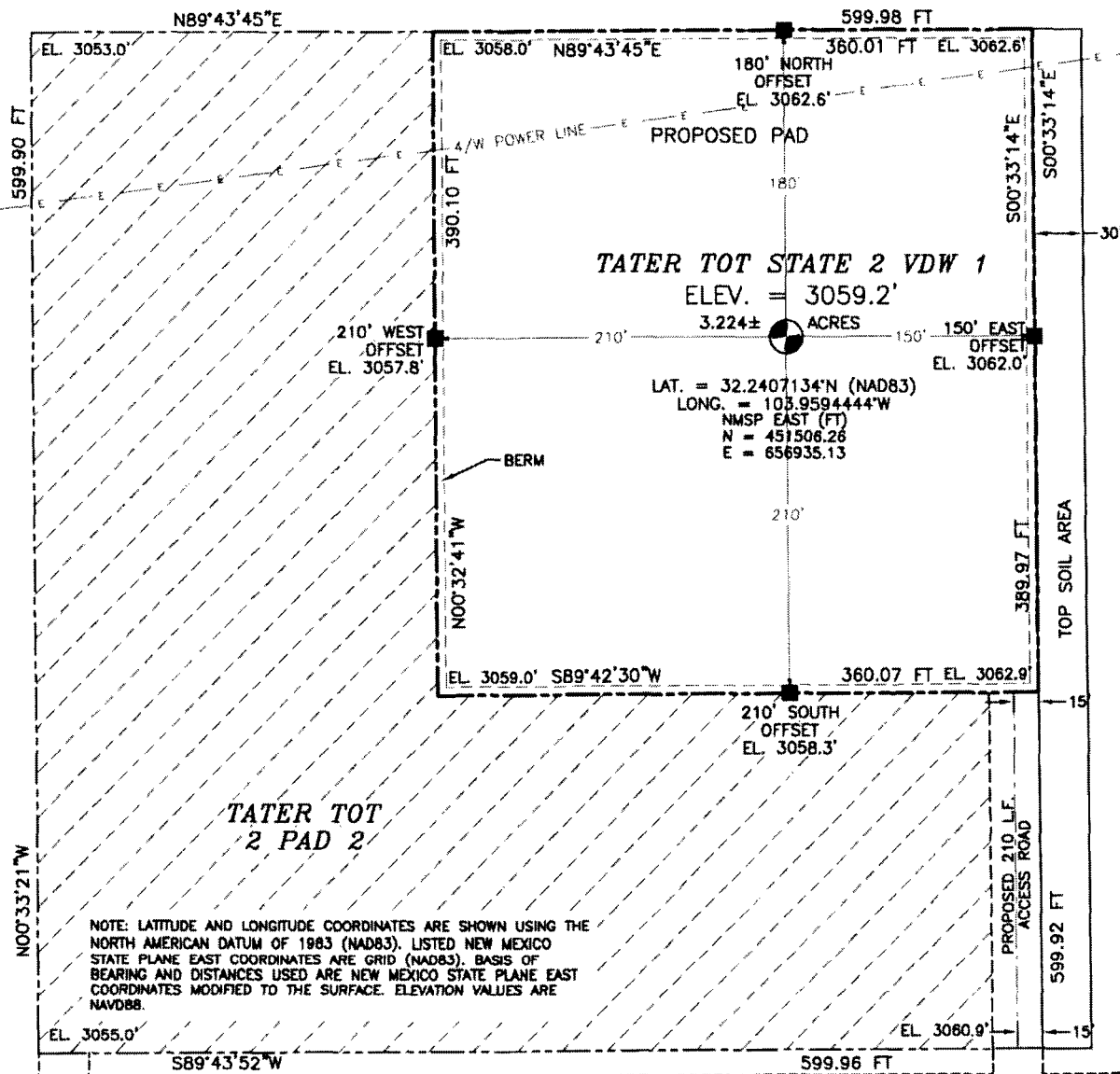
NW CORNER SEC. 2 LAT. = 32.2539857°N LONG. = 103.9638918°W NMSP EAST (FT) N = 456329.76 E = 655543.48	N/4 CORNER SEC. 2 LAT. = 32.2539767°N LONG. = 103.9553089°W NMSP EAST (FT) N = 456335.75 E = 658196.75	NE CORNER SEC. 2 LAT. = 32.2539672°N LONG. = 103.9467325°W NMSP EAST (FT) N = 456341.71 E = 660848.02
LOT 4	LOT 3	LOT 2
NOTE: LATITUDE AND LONGITUDE COORDINATES ARE SHOWN USING THE NORTH AMERICAN DATUM OF 1983 (NAD83). LISTED NEW MEXICO STATE PLANE EAST COORDINATES ARE GRID (NAD83). BASIS OF BEARING AND DISTANCES USED ARE NEW MEXICO STATE PLANE EAST COORDINATES MODIFIED TO THE SURFACE. ELEVATION VALUES ARE NAD88.		
W/4 CORNER SEC. 2 LAT. = 32.2467139°N LONG. = 103.9638380°W NMSP EAST (FT) N = 453684.45 E = 655569.24	TATER TOT STATE 2 VDW 1 ELEV. = 3059.2' LAT. = 32.2407134°N (NAD83) LONG. = 103.9594444°W NMSP EAST (FT) N = 451506.26 E = 656935.13	
SW CORNER SEC. 2 LAT. = 32.2394174°N LONG. = 103.9637841°W NMSP EAST (FT) N = 451030.14 E = 655595.01	S/4 CORNER SEC. 2 LAT. = 32.2394259°N LONG. = 103.9551991°W NMSP EAST (FT) N = 451042.47 E = 658249.35	SE CORNER SEC. 2 LAT. = 32.2394475°N LONG. = 103.9466205°W NMSP EAST (FT) N = 451059.78 E = 660901.66

S89°44'01"W 2654.96 FT S89°37'34"W 2652.96 FT

1345' 470'

OCT 12 2017

SECTION 2, TOWNSHIP 24 SOUTH, RANGE 29 EAST, N.M.P.M.
EDDY COUNTY, STATE OF NEW MEXICO
SITE MAP



010 50 100 200
SCALE 1" = 100'

DIRECTIONS TO LOCATION

FROM STATE HWY. 128 & CR. 793 (RAWHIDE) GO SOUTH ON 793 4.1 MILES WHERE PAVEMENT ENDS AND CONTINUE SOUTH ON CALICHE ROAD 0.37 MILE, BEND LEFT AND GO EAST 0.22 MILE, TURN RIGHT AND GO SOUTH 0.85 MILE, BEND LEFT AND GO EAST 0.3 MILE, TURN RIGHT AND GO SOUTH 1.0 MILE, BEND RIGHT AND GO SOUTHWEST 0.7 MILE, BEND LEFT AND GO SOUTH 1.0 MILE, TURN RIGHT AND GO WEST 2.05 MILES, TURN RIGHT AND GO NORTHWEST 0.45 MILE TO A ROAD SURVEY. FOLLOW STAKES WEST 1440' THEN NORTH 240' TO THE SOUTHEAST PAD CORNER FOR THIS LOCATION.

DEVON ENERGY PRODUCTION COMPANY, L.P.
TATER TOT STATE 2 VDW 1
LOCATED 470 FT. FROM THE SOUTH LINE
AND 1345 FT. FROM THE WEST LINE OF
SECTION 2, TOWNSHIP 24 SOUTH,
RANGE 29 EAST, N.M.P.M.
EDDY COUNTY, STATE OF NEW MEXICO

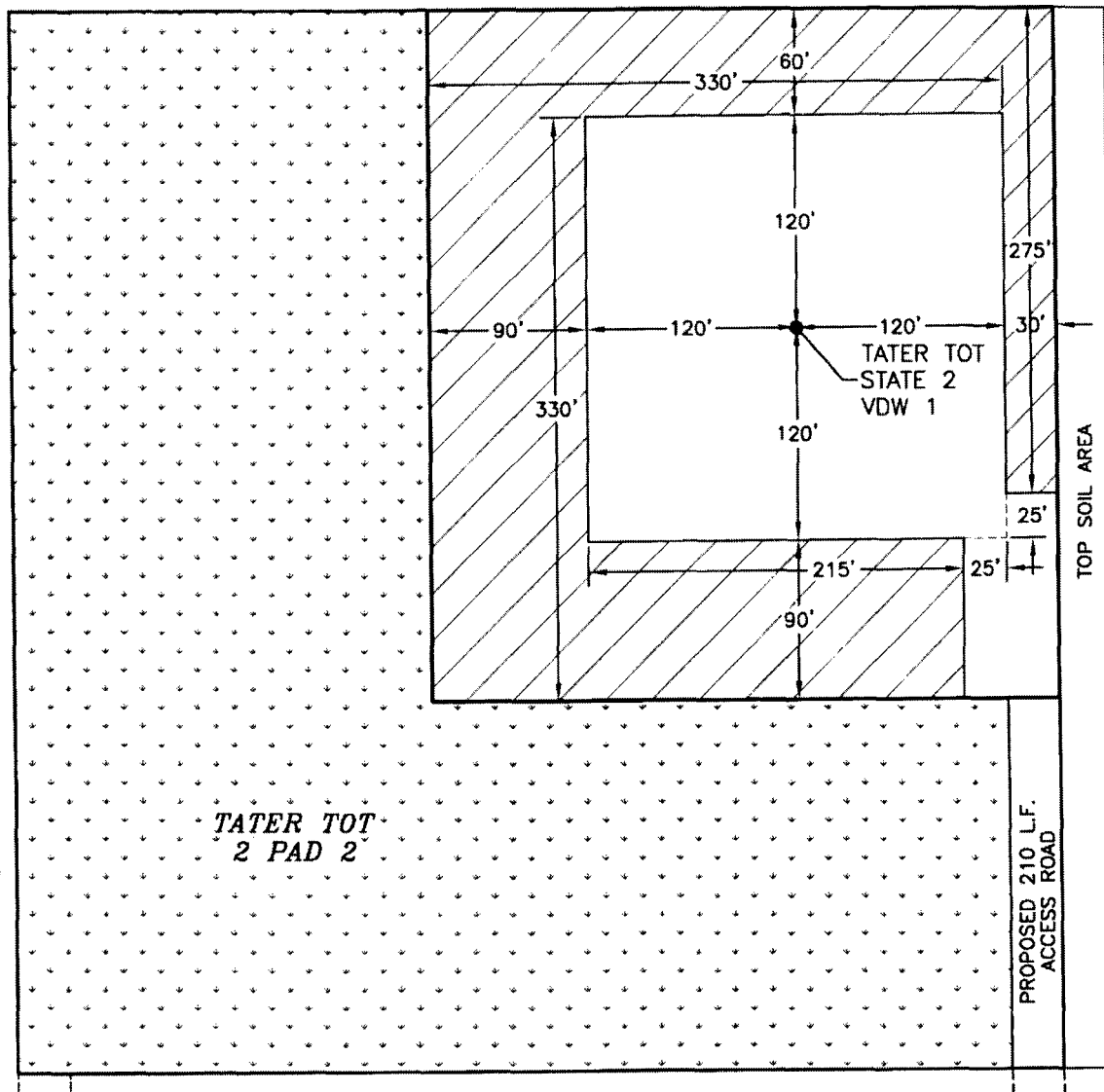
SEPTEMBER 30, 2017

SURVEY NO. 5590

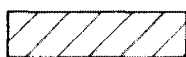
MADRON SURVEYING, INC. 301 SOUTH CANAL (575) 234-3341

CARLSBAD, NEW MEXICO

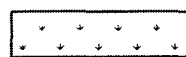
SECTION 2, TOWNSHIP 24 SOUTH, RANGE 29 EAST, N.M.P.M.
EDDY COUNTY, STATE OF NEW MEXICO
INTERIM SITE BUILD PLAN



ACCESS ROAD EASEMENT



DENOTES INTERIM PAD
RECLAMATION AREA



DENOTES GRADING SITE
RECLAMATION AREA

0 10 50 100 200
SCALE 1" = 100'

1.769± ACRES INTERIM PAD RECLAMATION AREA
4.895± ACRES GRADING SITE RECLAMATION AREA
1.599± ACRES NON-RECLAIMED AREA
8.263± ACRES TATER TOT 2 PAD 2

DEVON ENERGY PRODUCTION COMPANY, L.P.
TATER TOT STATE 2 VDW 1
LOCATED 470 FT. FROM THE SOUTH LINE
AND 1345 FT. FROM THE WEST LINE OF
SECTION 2, TOWNSHIP 24 SOUTH,
RANGE 29 EAST, N.M.P.M.
EDDY COUNTY, STATE OF NEW MEXICO

SEPTEMBER 30, 2017

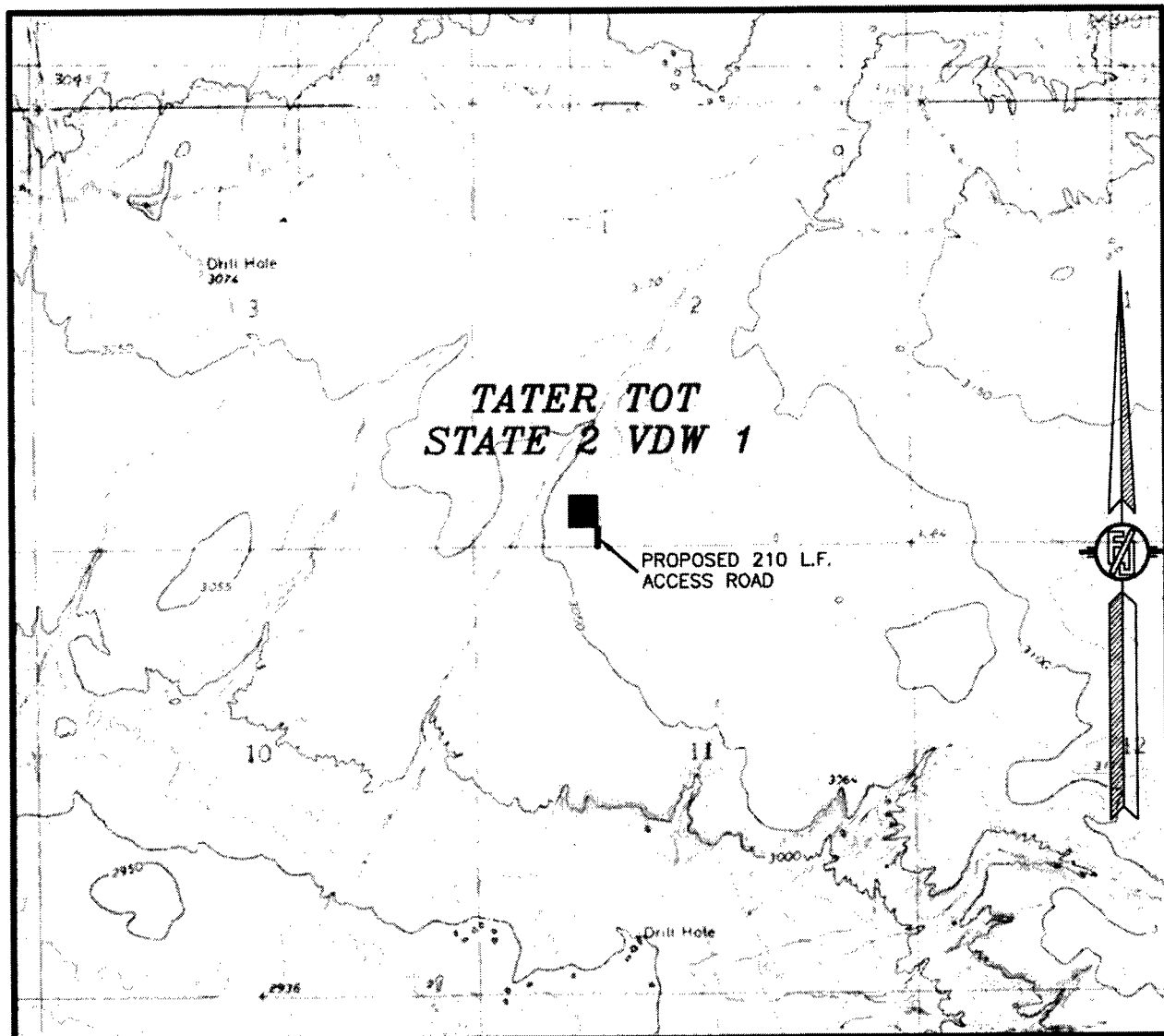
SURVEY NO. 5590

MADRON SURVEYING, INC.

301 SOUTH CANAL
(575) 234-3341

CARLSBAD, NEW MEXICO

SECTION 2, TOWNSHIP 24 SOUTH, RANGE 29 EAST, N.M.P.M.
EDDY COUNTY, STATE OF NEW MEXICO
LOCATION VERIFICATION MAP



USGS QUAD MAP:
PIERCE CANYON

NOT TO SCALE

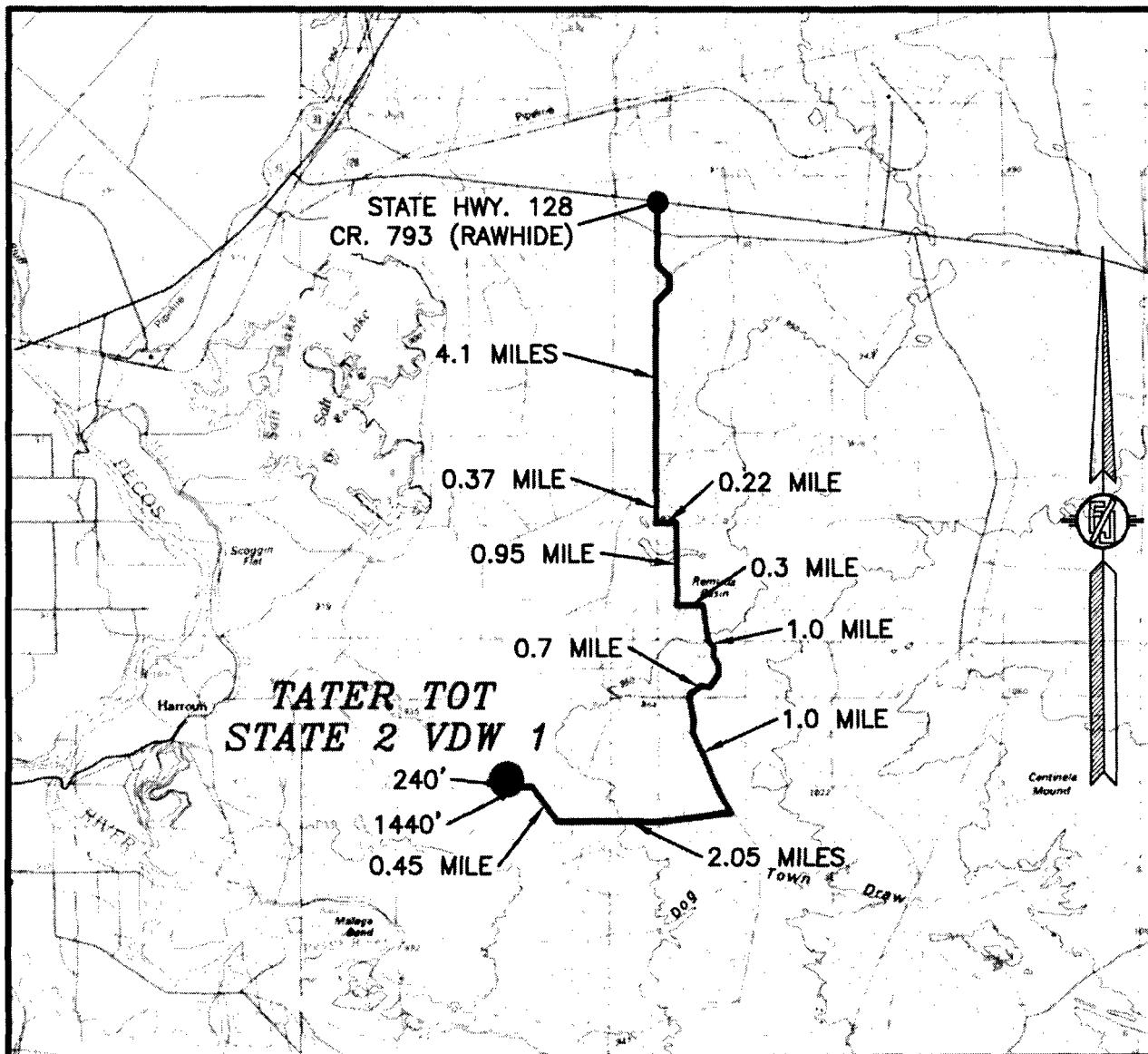
DEVON ENERGY PRODUCTION COMPANY, L.P.
TATER TOT STATE 2 VDW 1
LOCATED 470 FT. FROM THE SOUTH LINE
AND 1345 FT. FROM THE WEST LINE OF
SECTION 2, TOWNSHIP 24 SOUTH,
RANGE 29 EAST, N.M.P.M.
EDDY COUNTY, STATE OF NEW MEXICO

SEPTEMBER 30, 2017

SURVEY NO. 5590

MADRON SURVEYING, INC. 301 SOUTH CANAL (575) 234-3341 CARLSBAD, NEW MEXICO

SECTION 2, TOWNSHIP 24 SOUTH, RANGE 29 EAST, N.M.P.M.
EDDY COUNTY, STATE OF NEW MEXICO
VICINITY MAP



DISTANCES IN MILES

NOT TO SCALE

DIRECTIONS TO LOCATION

FROM STATE HWY. 128 & CR. 793 (RAWHIDE) GO SOUTH ON 793 4.1 MILES WHERE PAVEMENT ENDS AND CONTINUE SOUTH ON CALICHE ROAD 0.37 MILE, BEND LEFT AND GO EAST 0.22 MILE, TURN RIGHT AND GO SOUTH 0.95 MILE, BEND LEFT AND GO EAST 0.3 MILE, TURN RIGHT AND GO SOUTH 1.0 MILE, BEND RIGHT AND GO SOUTHWEST 0.7 MILE, BEND LEFT AND GO SOUTH 1.0 MILE, TURN RIGHT AND GO WEST 2.05 MILES, TURN RIGHT AND GO NORTHWEST 0.45 MILE TO A ROAD SURVEY. FOLLOW STAKES WEST 1440' THEN NORTH 240' TO THE SOUTHEAST PAD CORNER FOR THIS LOCATION.

DEVON ENERGY PRODUCTION COMPANY, L.P.

TATER TOT STATE 2 VDW 1

LOCATED 470 FT. FROM THE SOUTH LINE
AND 1345 FT. FROM THE WEST LINE OF
SECTION 2, TOWNSHIP 24 SOUTH,
RANGE 29 EAST, N.M.P.M.

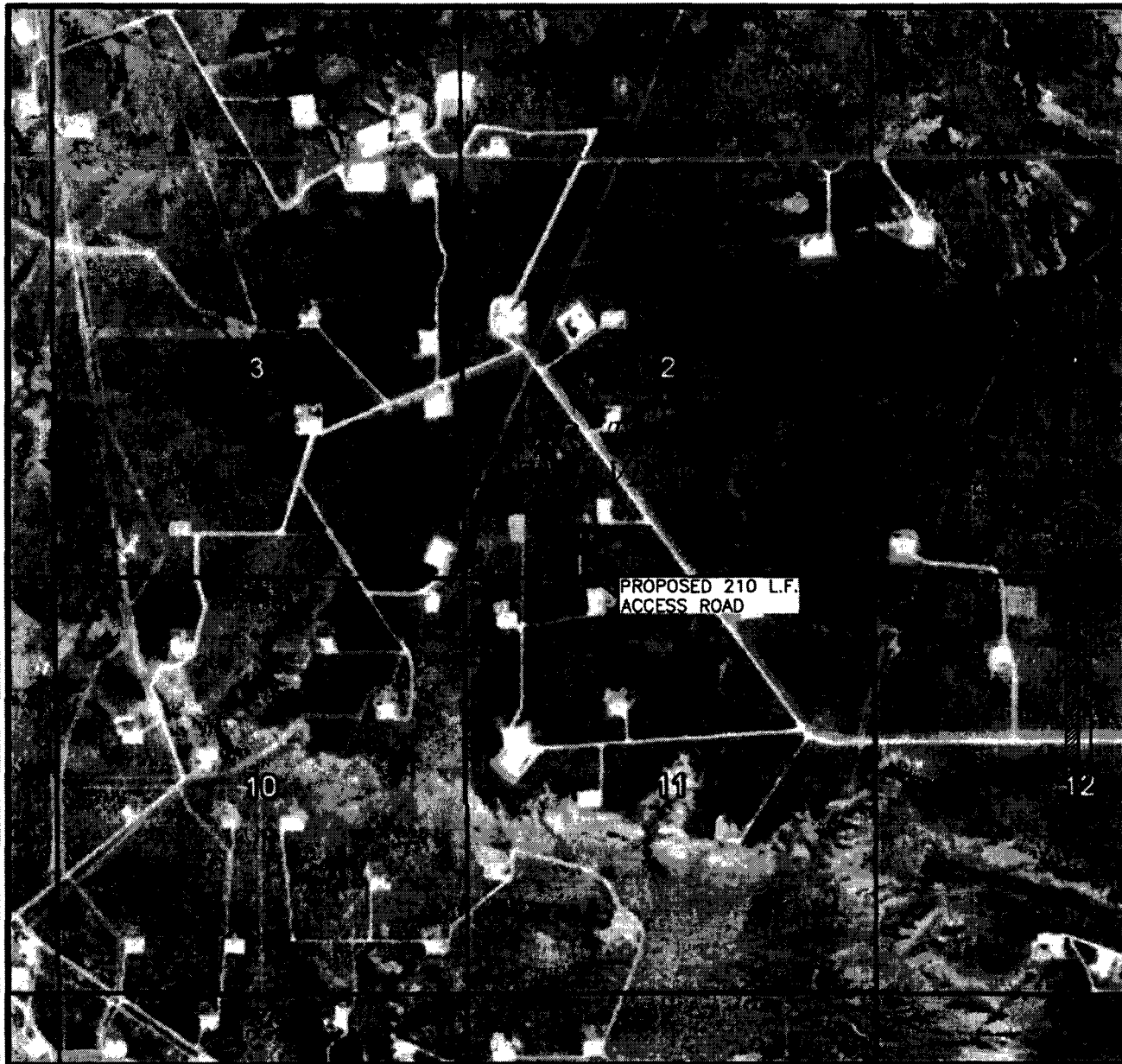
EDDY COUNTY, STATE OF NEW MEXICO

SEPTEMBER 30, 2017

MADRON SURVEYING, INC. 301 SOUTH CANAL (575) 234-3341 SURVEY NO. 5590
CARLSBAD, NEW MEXICO

SECTION 2, TOWNSHIP 24 SOUTH, RANGE 29 EAST, N.M.P.M.
EDDY COUNTY, STATE OF NEW MEXICO

AERIAL PHOTO



NOT TO SCALE
AERIAL PHOTO:
GOOGLE EARTH
FEB. 2017

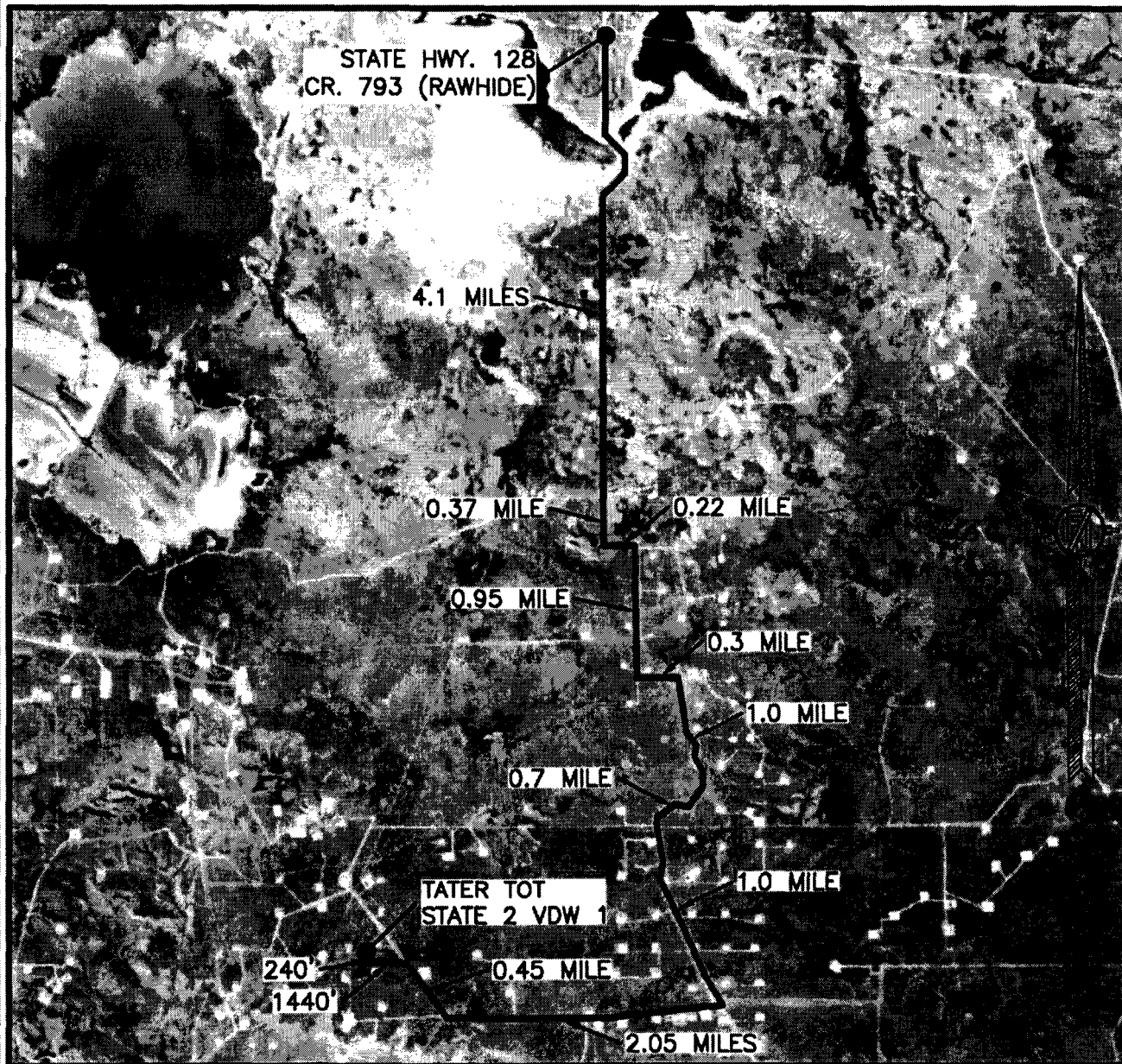
DEVON ENERGY PRODUCTION COMPANY, L.P.
TATER TOT STATE 2 VDW 1
LOCATED 470 FT. FROM THE SOUTH LINE
AND 1345 FT. FROM THE WEST LINE OF
SECTION 2, TOWNSHIP 24 SOUTH,
RANGE 29 EAST, N.M.P.M.
EDDY COUNTY, STATE OF NEW MEXICO

SEPTEMBER 30, 2017

SURVEY NO. 5590

MADRON SURVEYING, INC. 301 SOUTH CANAL (575) 234-3341 CARLSBAD, NEW MEXICO

SECTION 2, TOWNSHIP 24 SOUTH, RANGE 29 EAST, N.M.P.M.
 EDDY COUNTY, STATE OF NEW MEXICO
 AERIAL ACCESS ROUTE MAP



NOT TO SCALE
 AERIAL PHOTO:
 GOOGLE EARTH
 FEB. 2017

DEVON ENERGY PRODUCTION COMPANY, L.P.
TATER TOT STATE 2 VDW 1
 LOCATED 470 FT. FROM THE SOUTH LINE
 AND 1345 FT. FROM THE WEST LINE OF
 SECTION 2, TOWNSHIP 24 SOUTH,
 RANGE 29 EAST, N.M.P.M.
 EDDY COUNTY, STATE OF NEW MEXICO

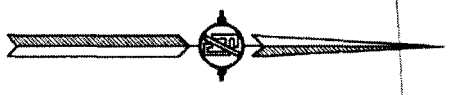
SEPTEMBER 30, 2017

SURVEY NO. 5590

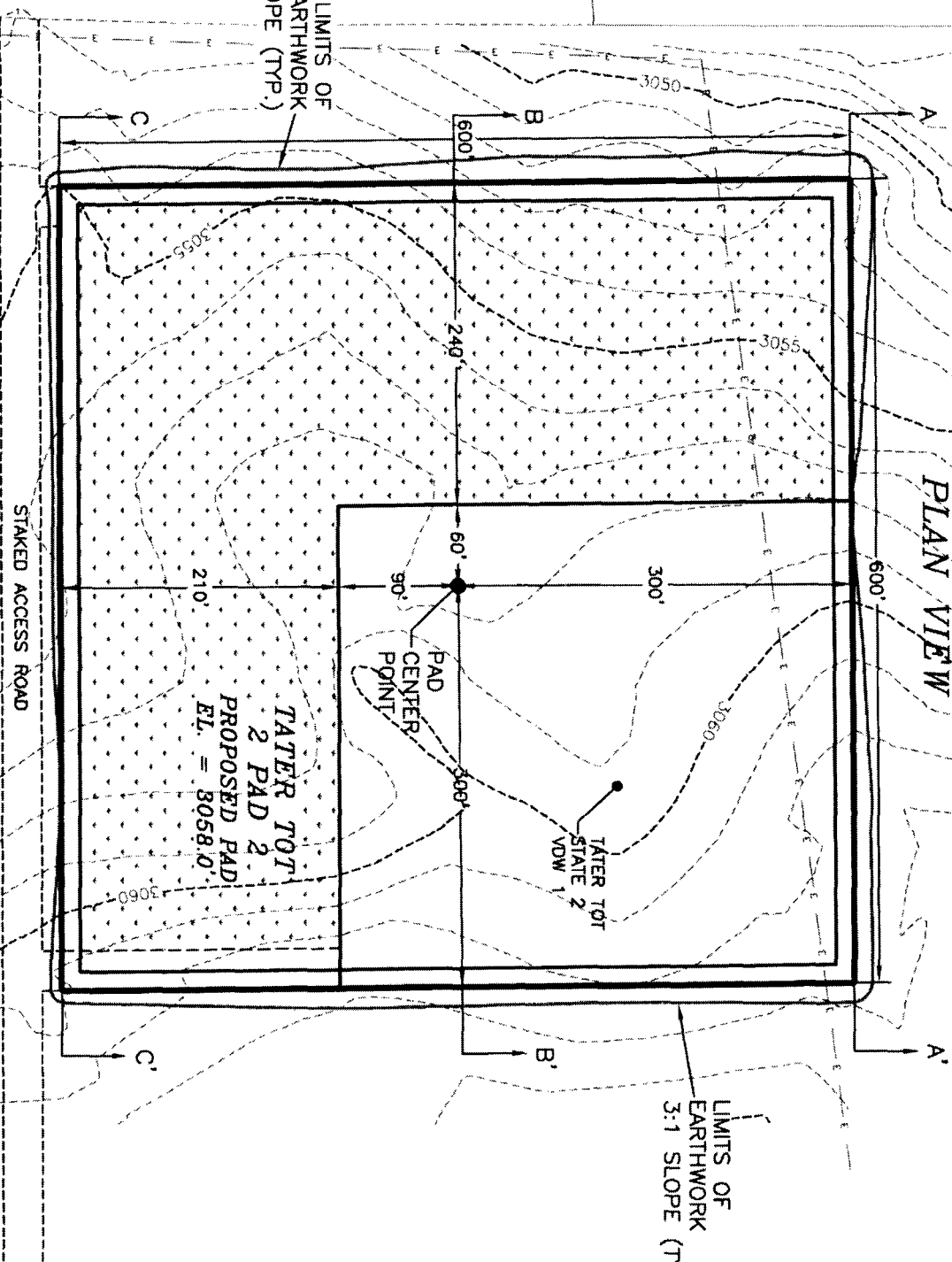
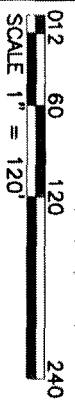
MADRON SURVEYING, INC. 301 SOUTH CANAL (575) 234-3341 CARLSBAD, NEW MEXICO

RECLAIMED PAD

PLAN VIEW



LIMITS OF
EARTHWORK
3:1 SLOPE (TYP.)



DEVON ENERGY PRODUCTION COMPANY, L.P.
PAD GRADING PLAN AND CROSS SECTIONS
FOR TATER TOT STATE 2 VDW 1
SECTION 2, TOWNSHIP 24 SOUTH,
RANGE 29 EAST, N.M.P.M.
EDDY COUNTY, STATE OF NEW MEXICO

SEPTEMBER 30, 2017

MADRON SURVEYING, INC. CARLSBAD, NEW MEXICO

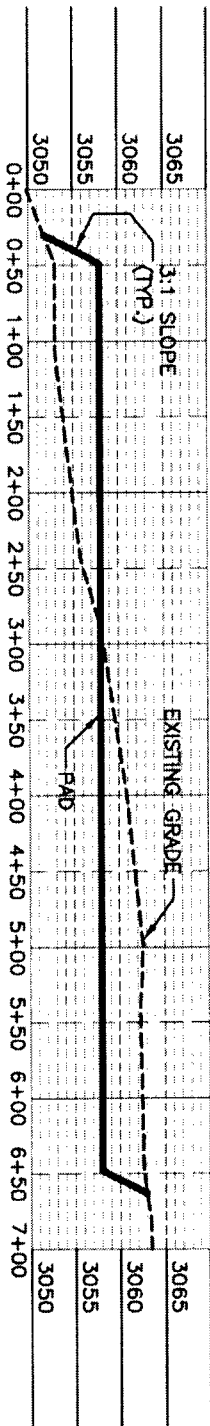
CUT	FILL	NET
13347 CU. YD	15960 CU. YD	2613 CU. YD (FILL)

EARTHWORK QUANTITIES ARE ESTIMATED

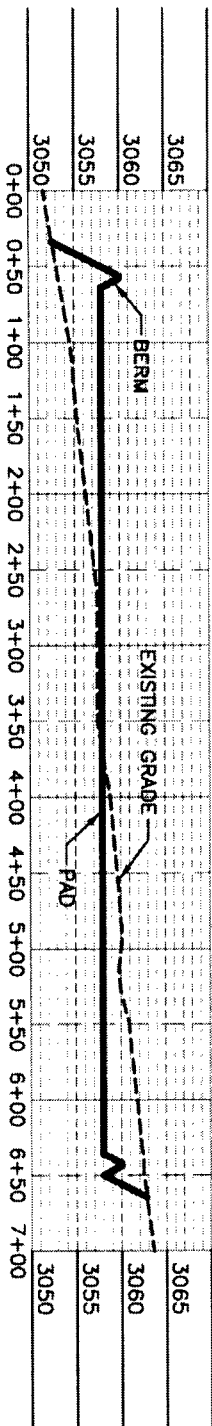
SHEET 1-2
SURVEY NO. 6690

CROSS-SECTIONS

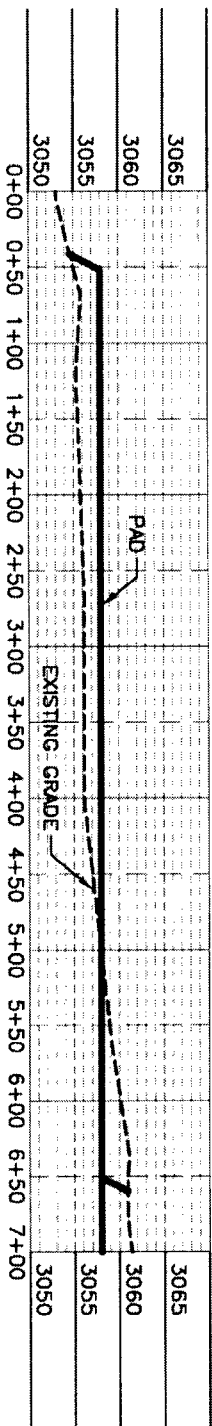
SECTION A-A'



SECTION B-B'



SECTION C-C'



012 60 120 240
SCALE 1" = 120' - 1" = 20' VER

DEVON ENERGY PRODUCTION COMPANY, L.P.
PAD GRADING PLAN AND CROSS SECTIONS
FOR TATER TOT STATE 2 VDW 1
SECTION 2, TOWNSHIP 24 SOUTH,
RANGE 29 EAST, N.M.P.M.
EDDY COUNTY, STATE OF NEW MEXICO

CUT	FILL	NET
13347 CU. YD	15960 CU. YD	2613 CU. YD (FILL)

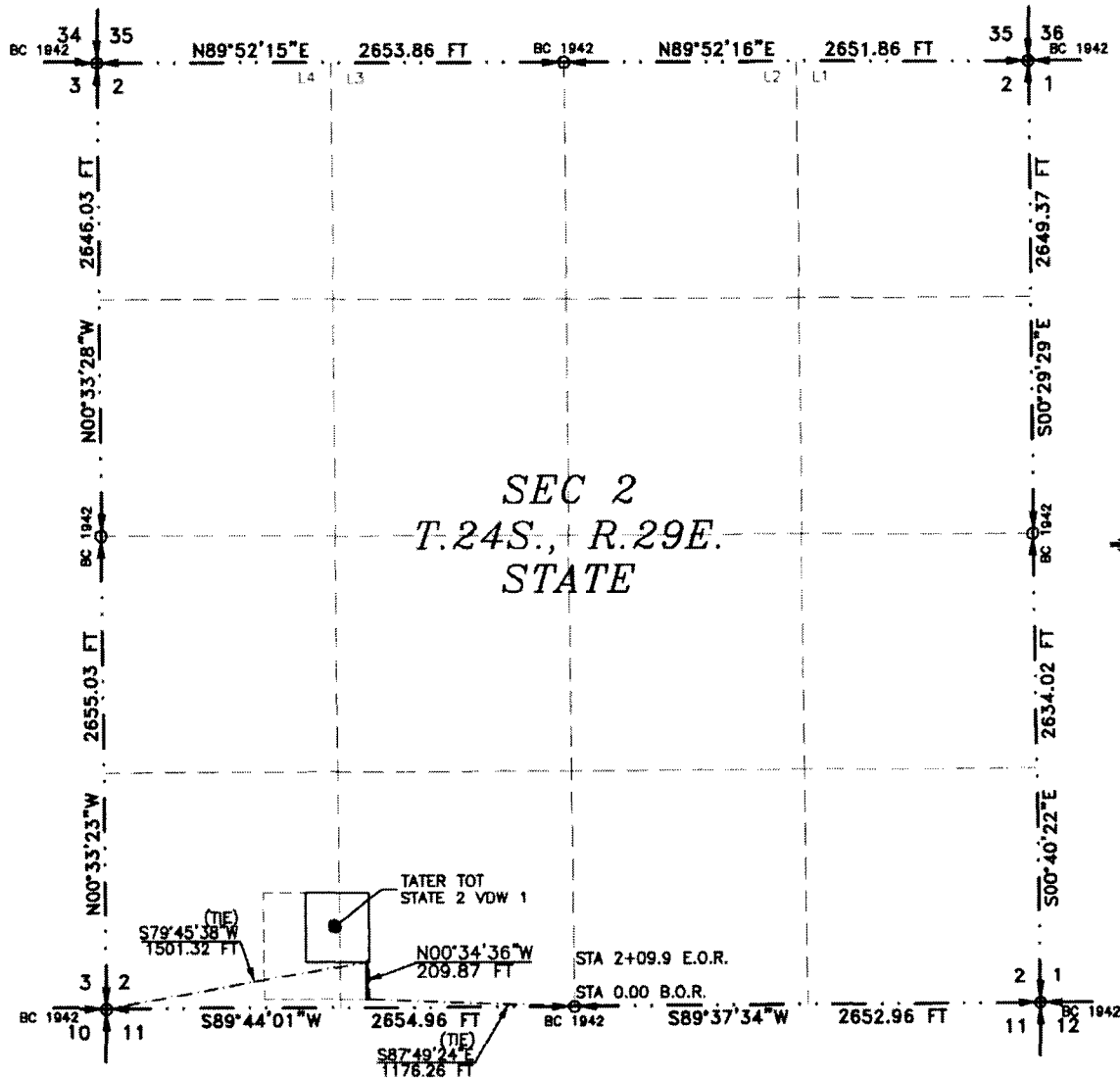
EARTHWORK QUANTITIES ARE ESTIMATED

SEPTEMBER 30, 2017
MADRON SURVEYING, INC. CARLSBAD, NEW MEXICO

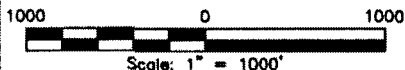
SHEET 2-2
SURVEY NO. 6690

ACCESS ROAD PLAT
ACCESS ROAD FOR TATER TOT STATE 2 VDW 1

DEVON ENERGY PRODUCTION COMPANY, L.P.
CENTERLINE SURVEY OF AN ACCESS ROAD CROSSING
SECTION 2, TOWNSHIP 24 SOUTH, RANGE 29 EAST, N.M.P.M.
EDDY COUNTY, STATE OF NEW MEXICO
SEPTEMBER 30, 2017



SEE NEXT SHEET (2-2) FOR DESCRIPTION



GENERAL NOTES

- 1.) THE INTENT OF THIS ROUTE SURVEY IS TO ACQUIRE AN EASEMENT.
- 2.) BASIS OF BEARING AND DISTANCE IS NMSP EAST (NAD83) MODIFIED TO SURFACE COORDINATES. NAD 83 (FEET) AND NAVD 88 (FEET) COORDINATE SYSTEMS USED IN THE SURVEY.

SHEET: 1-2

MADRON SURVEYING, INC.

SURVEYOR CERTIFICATE

I, FILIMON F. JARAMILLO, A NEW MEXICO PROFESSIONAL SURVEYOR NO. 12797, HEREBY CERTIFY THAT I HAVE CONDUCTED AND AM RESPONSIBLE FOR THIS SURVEY, THAT THIS SURVEY IS TRUE AND CORRECT TO THE BEST OF MY KNOWLEDGE AND BELIEF, AND THAT THIS SURVEY AND PLAT MEET THE MINIMUM STANDARDS FOR LAND SURVEYING IN THE STATE OF NEW MEXICO.

IN WITNESS WHEREOF, THIS CERTIFICATE IS EXECUTED AT CARLSBAD,

NEW MEXICO, THIS DAY OF OCTOBER 2017

[Signature]
FILIMON F. JARAMILLO PLS. 12797
MADRON SURVEYING, INC.
2301 SOUTH CANAL
CARLSBAD, NEW MEXICO 88220
Phone (575) 234-3341

SURVEY NO. 5590

CARLSBAD, NEW MEXICO

ACCESS ROAD PLAT
ACCESS ROAD FOR TATER TOT STATE 2 VDW 1

DEVON ENERGY PRODUCTION COMPANY, L.P.
CENTERLINE SURVEY OF AN ACCESS ROAD CROSSING
SECTION 2, TOWNSHIP 24 SOUTH, RANGE 29 EAST, N.M.P.M.
EDDY COUNTY, STATE OF NEW MEXICO
SEPTEMBER 30, 2017

DESCRIPTION

A STRIP OF LAND 30 FEET WIDE CROSSING STATE OF NEW MEXICO LAND IN SECTION 2, TOWNSHIP 24 SOUTH, RANGE 29 EAST, N.M.P.M., EDDY COUNTY, STATE OF NEW MEXICO AND BEING 15 FEET EACH SIDE OF THE FOLLOWING DESCRIBED CENTERLINE SURVEY:

BEGINNING AT A POINT WITHIN THE SE/4 SW/4 OF SAID SECTION 2, TOWNSHIP 24 SOUTH, RANGE 29 EAST, N.M.P.M., WHENCE THE SOUTH QUARTER CORNER OF SAID SECTION 2, TOWNSHIP 24 SOUTH, RANGE 29 EAST, N.M.P.M. BEARS S87°49'24"E, A DISTANCE OF 1176.26 FEET;
THENCE N00°34'36"W A DISTANCE OF 209.87 FEET THE TERMINUS OF THIS CENTERLINE SURVEY, WHENCE THE SOUTHWEST CORNER OF SAID SECTION 2, TOWNSHIP 24 SOUTH, RANGE 29 EAST, N.M.P.M. BEARS S79°45'38"W, A DISTANCE OF 1501.32 FEET;

SAID STRIP OF LAND BEING 209.87 FEET OR 12.72 RODS IN LENGTH, CONTAINING 0.145 ACRES MORE OR LESS AND BEING ALLOCATED BY FORTIES AS FOLLOWS:

SE/4 SW/4 209.87 L.F. 12.72 RODS 0.145 ACRES

GENERAL NOTES


- 1.) THE INTENT OF THIS ROUTE SURVEY IS TO ACQUIRE AN EASEMENT.
- 2.) BASIS OF BEARING AND DISTANCE IS NMSP EAST (NAD83) MODIFIED TO SURFACE COORDINATES. NAD 83 (FEET) AND NAVD 88 (FEET) COORDINATE SYSTEMS USED IN THE SURVEY.

SHEET: 2-2

SURVEYOR CERTIFICATE

I, FILIMON F. JARAMILLO, A NEW MEXICO PROFESSIONAL SURVEYOR NO. 12797, HEREBY CERTIFY THAT I HAVE CONDUCTED AND AM RESPONSIBLE FOR THIS SURVEY, THAT THIS SURVEY IS TRUE AND CORRECT TO THE BEST OF MY KNOWLEDGE AND BELIEF, AND THAT THIS SURVEY AND PLAT MEET THE MINIMUM STANDARDS FOR LAND SURVEYING IN THE STATE OF NEW MEXICO.

IN WITNESS WHEREOF, THIS CERTIFICATE IS EXECUTED AT CARLSBAD,
NEW MEXICO, THIS 1 DAY OF OCTOBER 2017


FILIMON F. JARAMILLO, PLS., 12797
MADRON SURVEYING, INC.
301 SOUTH CANAL
CARLSBAD, NEW MEXICO 88220
Phone (575) 234-3341

SURVEY NO. 5590

MADRON SURVEYING, INC. CARLSBAD, NEW MEXICO