

NEW MEXICO OIL CONSERVATION DIVISION  
SOUTHEAST NEW MEXICO PACKER LEAKAGE TEST

Revised 11/23/11

Operator EOG Y RESOURCES Well API # 30-005-61224  
Location Of Well: Unit N Section 32 Township 7S Range 26E County CHAVES  
Well Name & No. PENZIL SG ST. 1

	Name of Reservoir or Pool	Type of Prod. (Oil or Gas)	Method of Prod. (Flow Art. Lift)	Prod. Medium (Tbg. Or Cag.)	Choke Size
Upper Completion	<u>ABO</u>	<u>GAS</u>	<u>Flow</u>	<u>CSG</u>	<u>OPEN</u>
Lower Completion	<u>Wolf Camp</u>	<u>GAS</u>	<u>Flow</u>	<u>TBG</u>	<u>OPEN</u>

FLOW TEST NO. 1

Both zones shut-in at (hour, date): 8:15 10/18/17

Well opened at (hour, date): 10:30 AM 10/18/17

Upper Completion Lower Completion

Indicate by (X) the zone producing.....

Pressure at beginning of test.....

Stabilized? (Yes or No).....

Maximum pressure during test.....

Minimum pressure during test.....

Pressure at conclusion of test.....

Pressure change during test (Maximum minus Minimum).....

Was pressure change an increase or a decrease?.....

Well closed at (hour, date): 11:30 AM 10/19/2017 Total Time On Production 25 HRS.

Oil Production During Test: 0 bbls; Grav. N/A Gas Production During Test: 19 MCF; GOR N/A

Remarks:

FLOW TEST NO. 2

Both zones shut-in at (hour, date): 11:30 AM 10/19/17

Well opened at (hour, date): 11:45 AM 10/19/17

Upper Completion Lower Completion

Indicate by (X) the zone producing.....

Pressure at beginning of test.....

Stabilized? (Yes or No).....

Maximum pressure during test.....

Minimum pressure during test.....

Pressure at conclusion of test.....

Pressure change during test (Maximum minus Minimum).....

Was pressure change an increase or a decrease?.....

Well closed at (hour, date): 8:30 10/20/17 Total Time On Production 21 HRS

Oil Production During Test: 0 bbls; Grav. N/A Gas Production During Test: 0.25 MCF; GOR N/A

Remarks:

I hereby certify that the information herein contained is true and complete to the best of my knowledge.

Approved 11/14/17 20  
New Mexico Oil Conservation Division

Accepted for record  
NMOC D R

By \_\_\_\_\_

Title \_\_\_\_\_

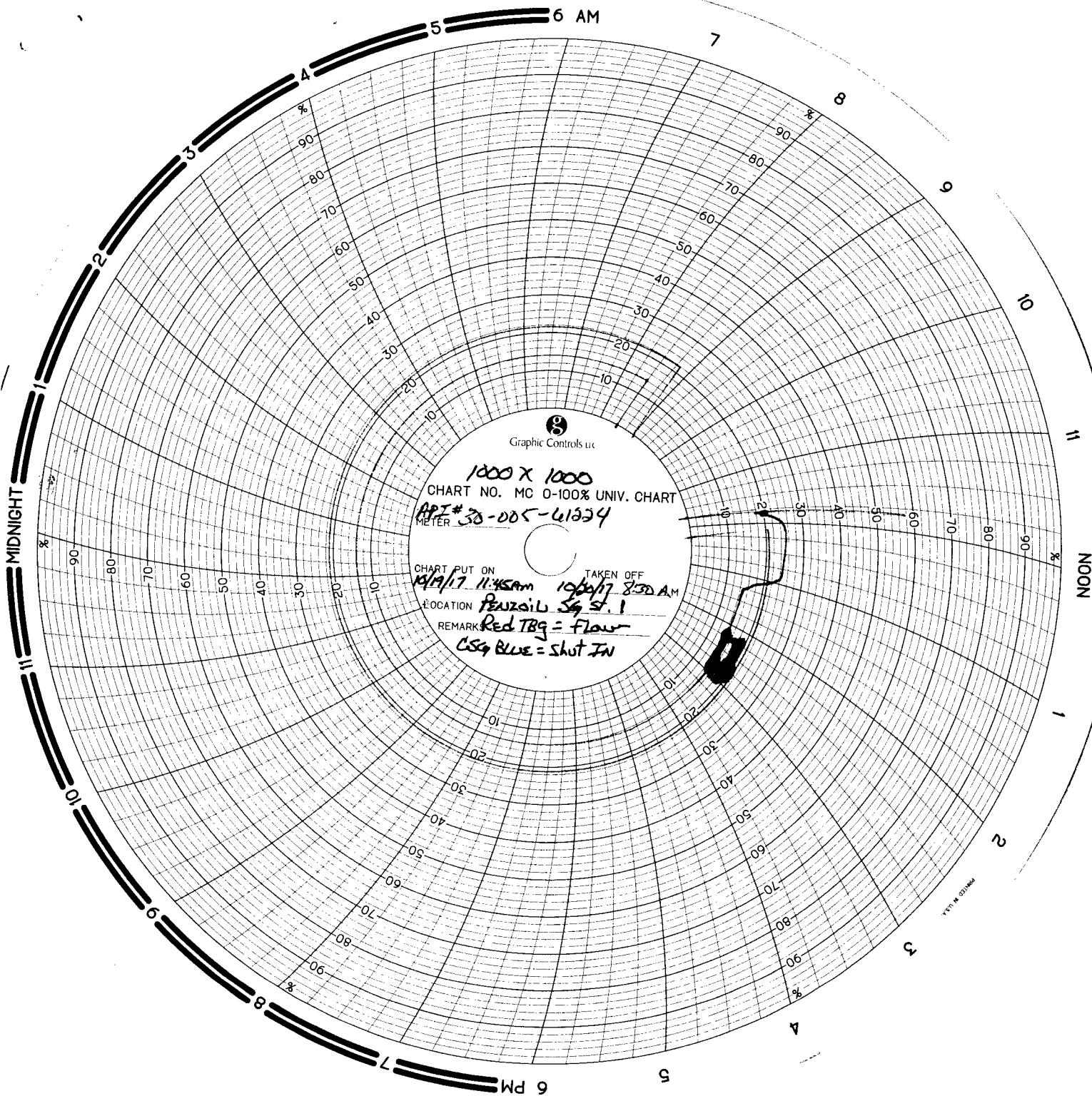
Operator EOG Y RESOURCES

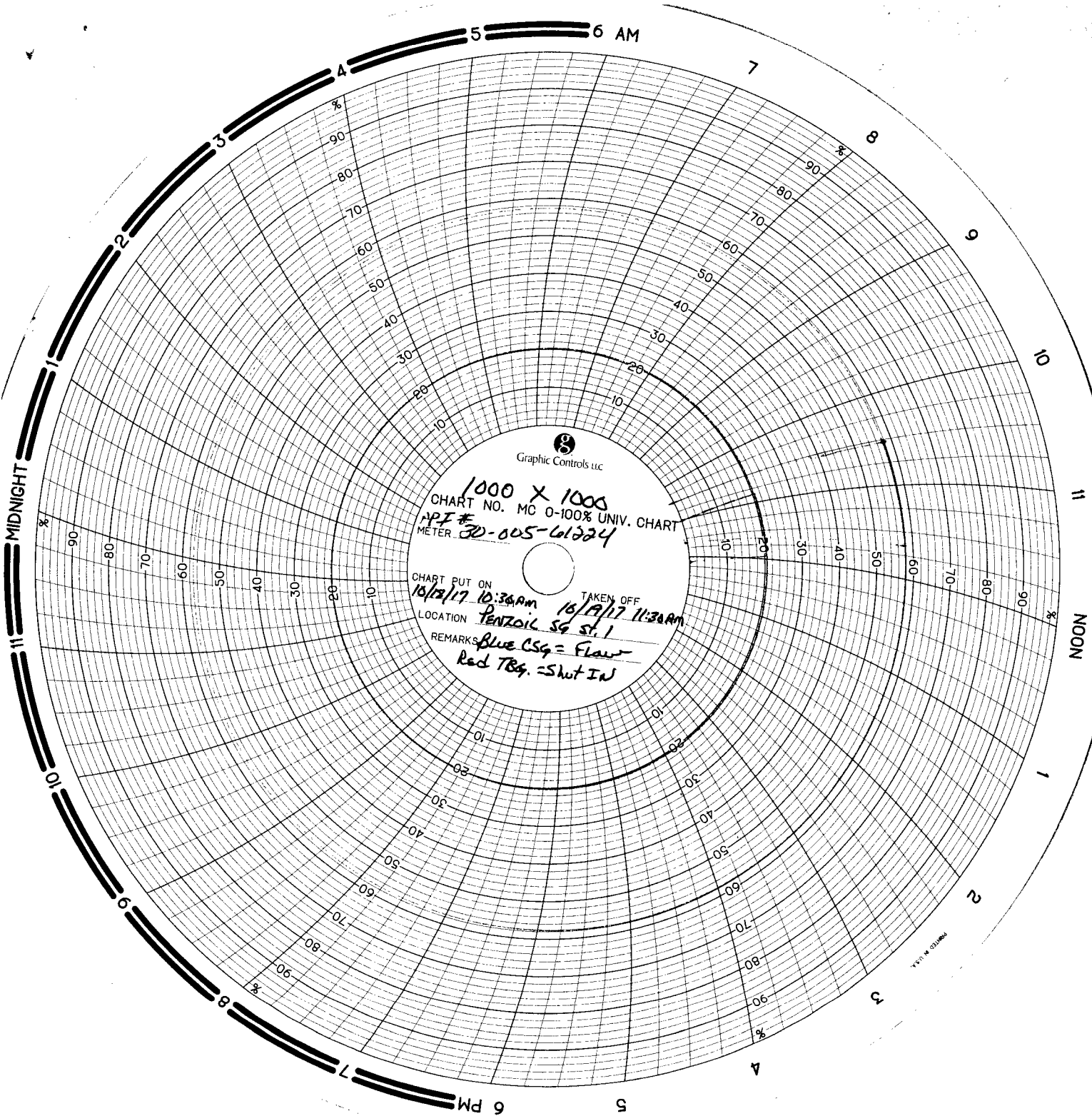
By JEFF DECK

Title MEASUREMENT TECH III

E-mail Address jdeck@guestoffice.net

Date 10/20/2017





Graphic Controls LLC

1000 X 1000  
CHART NO. MC 0-100% UNIV. CHART  
API #  
METER 30-005-61224

CHART PUT ON 10/12/17 10:30 AM  
TAKEN OFF 10/19/17 11:30 AM  
LOCATION PENTZOL SQ ST. 1  
REMARKS Blue CSG = Flaw  
Red TBG = Shut IN