

UNITED STATES
DEPARTMENT OF THE INTERIOR
BUREAU OF LAND MANAGEMENTFORM APPROVED
OMB NO. 1004-0137
Expires: January 31, 2018**SUNDRY NOTICES AND REPORTS ON WELLS**
*Do not use this form for proposals to drill or to re-enter an abandoned well. Use form 3160-3 (APD) for such proposals.*5. Lease Serial No.
NNMM19199

6. If Indian, Allottee or Tribe Name

7. If Unit or CA/Agreement, Name and/or No.

8. Well Name and No.
CAL-MON 59. API Well No.
30-015-2564010. Field and Pool or Exploratory Area
SWD DELAWARE11. County or Parish, State
EDDY COUNTY, NM**SUBMIT IN TRIPLICATE - Other instructions on page 2**

1. Type of Well

☐ Oil Well ☐ Gas Well ☒ Other: INJECTION2. Name of Operator
OXY USA INC.Contact: DAVID STEWART
E-Mail: david_stewart@oxy.com3a. Address
P.O. BOX 50250
MIDLAND, TX 797103b. Phone No. (include area code)
Ph: 432-685-5717

4. Location of Well (Footage, Sec., T., R., M., or Survey Description)

Sec 35 T23S R31E SWNE 1980FNL 1980FEL
32.262692 N Lat, 103.746445 W Lon**12. CHECK THE APPROPRIATE BOX(ES) TO INDICATE NATURE OF NOTICE, REPORT, OR OTHER DATA**

TYPE OF SUBMISSION	TYPE OF ACTION			
<input type="checkbox"/> Notice of Intent	<input type="checkbox"/> Acidize	<input type="checkbox"/> Deepen	<input type="checkbox"/> Production (Start/Resume)	<input type="checkbox"/> Water Shut-Off
<input checked="" type="checkbox"/> Subsequent Report	<input type="checkbox"/> Alter Casing	<input type="checkbox"/> Hydraulic Fracturing	<input type="checkbox"/> Reclamation	<input type="checkbox"/> Well Integrity
<input type="checkbox"/> Final Abandonment Notice	<input type="checkbox"/> Casing Repair	<input type="checkbox"/> New Construction	<input type="checkbox"/> Recomplete	<input checked="" type="checkbox"/> Other
	<input type="checkbox"/> Change Plans	<input type="checkbox"/> Plug and Abandon	<input type="checkbox"/> Temporarily Abandon	Workover Operations
	<input type="checkbox"/> Convert to Injection	<input type="checkbox"/> Plug Back	<input type="checkbox"/> Water Disposal	

13. Describe Proposed or Completed Operation: Clearly state all pertinent details, including estimated starting date of any proposed work and approximate duration thereof. If the proposal is to deepen directionally or recompleat horizontally, give subsurface locations and measured and true vertical depths of all pertinent markers and zones. Attach the Bond under which the work will be performed or provide the Bond No. on file with BLM/BIA. Required subsequent reports must be filed within 30 days following completion of the involved operations. If the operation results in a multiple completion or recompleat in a new interval, a Form 3160-4 must be filed once testing has been completed. Final Abandonment Notices must be filed only after all requirements, including reclamation, have been completed and the operator has determined that the site is ready for final inspection.

See attached for detail of work, WBD, MIT chart and below for short summary.

Work was done from 2/3/17-2/14/17 and 3/6/17-3/27/17

Isolate casing leak @ 967-969'. Replace wellhead. Run casing integrity log and CBL from 4382-surface. Cement squeeze casing leak @ 967-969' w/ 725sx cement. Drill and clean out to 5810', dump bail 5sx cmt and M&P 25sx cmt from 5810-5518' (tagged) for new PBTD. RIH w/ 2-7/8" duo-line tbg & pkr, set @ 4392'. Run MIT, pressure to 560# for 30min, tested good. BLM notified but did not witness.

NM OIL CONSERVATION
ARTESIA DISTRICT

NOV 07 2017

RECEIVED

Accepted for record

NMOCDF

11/7/17

ACCEPTED FOR RECORD

14. I hereby certify that the foregoing is true and correct.

Electronic Submission #391519 verified by the BLM Well Information System

For OXY USA INC., sent to the Carlsbad

Committed to AFMSS for processing by JENNIFER SANCHEZ on 10/11/2017 ()

Name (Printed/Typed) DAVID STEWART

Title SR. REGULATORY ADVISOR

Signature (Electronic Submission)

Date 10/10/2017

THIS SPACE FOR FEDERAL OR STATE OFFICE USE

Approved By <u>10/18/2017 Paul R. Stewart</u>	Title <u>TPET</u>	Date
Conditions of approval, if any, are attached. Approval of this notice does not warrant or certify that the applicant holds legal or equitable title to those rights in the subject lease which would entitle the applicant to conduct operations thereon.		BUREAU OF LAND MANAGEMENT CARLSBAD FIELD OFFICE

Title 18 U.S.C. Section 1001 and Title 43 U.S.C. Section 1212, make it a crime for any person knowingly and willfully to make to any department or agency of the United States any false, fictitious or fraudulent statements or representations as to any matter within its jurisdiction.

(Instructions on page 2)

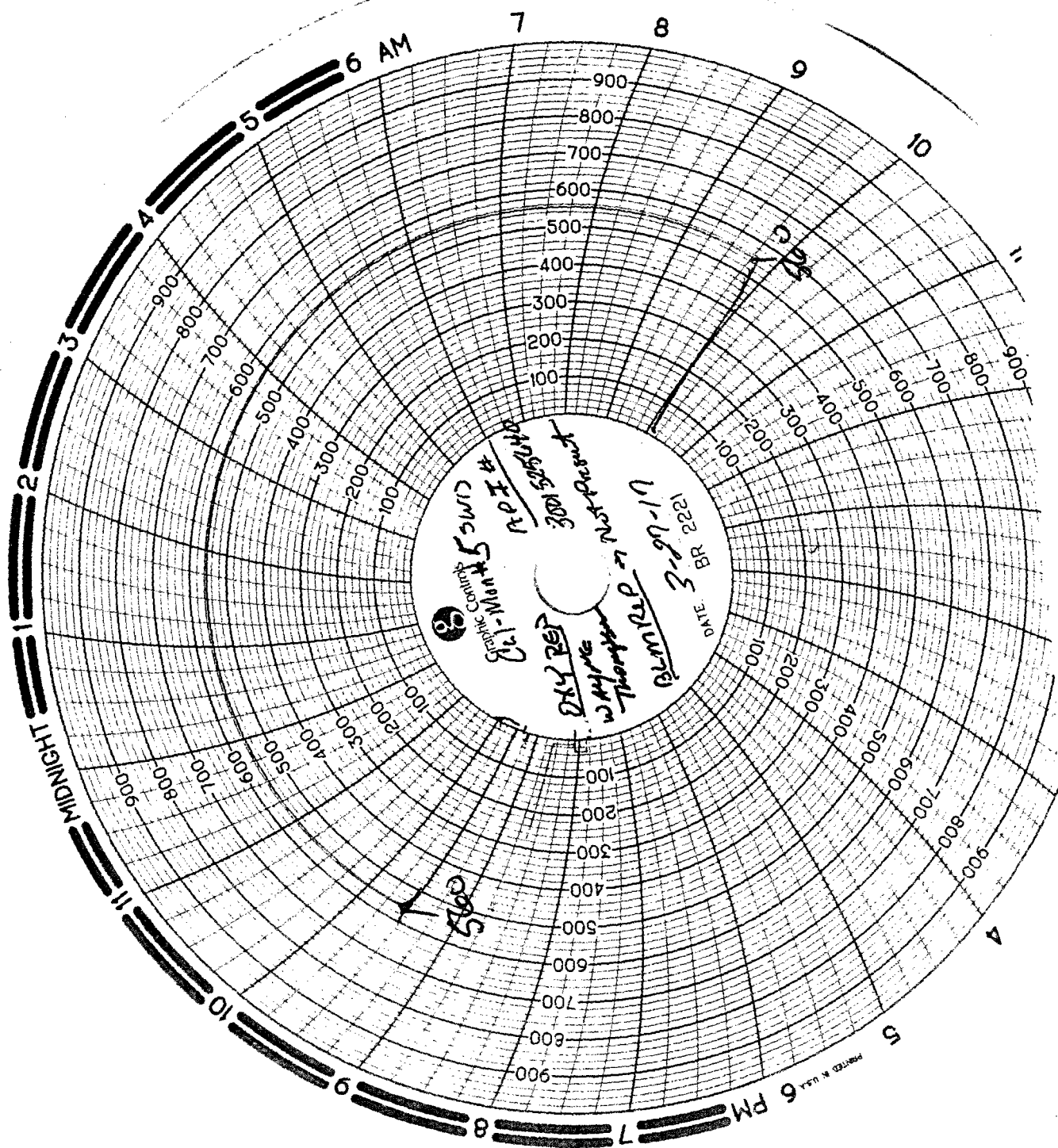
**** OPERATOR-SUBMITTED ** OPERATOR-SUBMITTED ** OPERATOR-SUBMITTED ****

OXY USA Inc. Cal Mon #5 - 30-015-25640

- 2/3/17 Tbg-700# Csg-Vacuum had 700 psi CSG was on a vacuum, bleed off tbg & was flowing at 40#, recovered 180 bbls in 1 hr. RU slickline, RIH w/ gauge ring to 4388', RIH w/ blk plg & set in prof nip @ 4388', test plug to 500#, good test. Pressure test tbg to 1600#, good test, pressure test csg to 500#. leaked off 100# in 30min. ND 7-1/16" 2K B1 adaptor flange, NU 7-1/16" 5K hydraulic BOP w/ spool adaptor. RU SL, attempt to fish blk plg.
- 2/6/17 Well was flowing @ 40# to frac tank. RU WL, RIH & perf drain holes in tbg @ 4280', RDWL. Circ 10# brine, SI well, monitor pressure. After 1 hr pressure built up to 250# on tbg & csg.
- 2/7/17 Csg-tbg - 460#, bled off to frac tank, well was flowing at 50#, pump 48 bbls 13# mud cap down csg, ran out of mud, SI montior csg, Rec mud, pump CSG and 8 bbls of 13# mud cap down tbg ran out of mud, monitor pressure, tbg-csg had 500#.
- 2/8/17 Well was flowing 30# frac tank. Pump 45 bbls 15# mud cap down csg then start to pump mud cap down tbg when pump broke, SI WO pump to be repaired. Pump 20 bbls 15# mud cap, Monitor pressure, tbg was slightly running over, SI 30 min had 0#. Start to POOH w/ tbg, started to flow, circ mud out of hole.
- 2/9/17 Recirc hole W/ 100 bbls 10# brine, set PKR @ 4000'. Reverse circ 95 bbls 15# mud. NU 7-1/16" 3K stripper head, unset pkr & csg & tbg went on a vacuum. POOH & LD 2-7/8" duo-line tbg & pkr, ND stripper head. RIH w/ 5-1/2" RBP & pkr on 139 jts-2 7/8" L-80 work string tbg, set RBP 4382' (102' above top perf), PUH & attempt to set pkr, LD 1 jt & attempt to set pkr with no luck, attempt several times by laying down 1 jt & running 10' above RBP with same results.
- 2/10/17 RIH W/ PKR & SET 1080', TESTED FROM 1080-4382' @ 950# FOR 15 MIN, HELD. BLED OFF PSI, TESTED FROM 1,080-SURFACE @ 500#, LEAKED OFF TO 0# IN LESS THAN A MINUTE. PUH & SET PKR @ 862', TESTED TO 800#, PSI DROPPED TO 0# & STARTED TO FLOW OUT 8-5/8" SURFACE CSG, CONTINUE TO TEST CSG @ 831, 799, 736, 610, 483, 297, 45, 6' TO SURFACE W/ WITH SAME RESUTS. RIH & SET PKR @ 1082', TEST FROM 1082-4382' TO 900# FOR 10 MIN, HELD. PUH TO 1019' TEST TO 900# FOR 10 MIN, HELD. PUH TO 956', TEST TO 800#, LEAKED OFF TO 300# IN 1.5 MIN. puh to 859', TRIED TO PRESSURE, STARTED FLOWING OUT 8-5/8", POOH W/ TBG & PKR.
- 2/11/17 RIH w/ 5-1/2" COMPRESSION RBP & PKR, SET RBP @ 1082', PKR @ 1019', ATTEMPTED TO TEST WITH NO LUCK, NOT ENOUGH WEIGHT TO SEAL OFF RUBBERS ON PKR. POOH, RIH W/ TENSION PKR & SET AT 1019' - TEST BELOW PKR TO 1082' TO 600#, HELD, TESTED TO SURFACE AND LEAKED OUT 8-5/8" CSG VALVE. CONTINUE TO TEST ABOVE & BELOW PKR MOVING UP 62' EACH TEST. EACH TEST ABOVE PKR TO SURFACE WOULD FLOW OUT 8-5/8" CSG VALVE. TESTED BELOW PKR AT 956, 893, 831, 768, 704, 641, 578, 515, 462, 389, 325, 265, 203, 140, 77, 45', EACH TEST WOULD PRESSURE TO 600#, LEAK OFF 200# IN 1 MIN. RIH & LATCHED ONTO RBP, PUH & ATTEMPT TO SET @ 883' WOULDNT SET. PUH & SET RBP @ 851', RIH & SET TENSION PKR 10' BELOW SURFACE, TEST CSG FROM 10-851' TO 580#, HELD. POOH W/ TBG, RBP & PKR.
- 2/13/17 Csg-8-5/8" on vacuum. RIH w/ 138 jts 2-7/8" L-80 work string tbg, POH & LD 138 jts 2-7/8" L-80 ws tbg. RUWL, RIH w/ csg inspection logWait on Renegade wireline to log CSG for 1 hour. Rig up wireline run csg inspection log from 4382' to surface changed over equipment then run CBL from 4,382' to surface, rig down wireline.
- 2/14/17 Csg-8-5/8" on vacuum, RIH w/ 136 jts 2-7/8" dou-line tbg, POOH & LD 136 jts 2-7/8" dou-line tbg. PU & RIH w/ 5-1/2" RBP, 4 jts 2-7/8" L-80 tbg, load hole with 10 bbls 10# brine, set RBP @ 148', LD 4 jts. ND 7-1/16" hydraulic BOP w/ spool adaptor. NU WH head flange.
- 2/15/17 CSG-0#. RD EQUIP AND MOVE TO SIDE OF LOCATION, CLEAN LOCATION
- 2/17/17 EXCAVATED AROUND WH, FOUND OUTER CSG SEVERELY DAMAGED & SMALL HOLE IN THE PROD CSG.
- 3/6/17 WELDER CUT OFF OLD WH & BAD CSG FROM WELL, HAD WRONG REPLACEMENT WH. Wo CORRECT WH.
- 3/7/17 CSG-0#, WELDER BUTTONED UP NEW CSG HEAD, CAMERON TESTED TO 900#, HELD GOOD. WELDER CUT NEW 5-1/2" CSG TO LENGTH, BACKHOE SET IT IN PLACE ON WELL AND SECURED. MOVED IN NEW CSG HEAD WITH AND SECURE TO WELL. BACKHOE OP BACKFILLED AROUND WELL, SET NEW 3K WH, CAMERON FLANGED IT UP AND TESTED IT TO 3000#, HELD GOOD. RU PUMP TRUCK FOR L&T ON CSG, PUMP 10 BBL, PRESSURE UP 5-1/2" CSG TO 600#, DID NOT HOLD, LEAK OFF 100# IN LESS THAN 1 MIN. RD PUMP TRUCK.
- 3/9/17 RU PU, reverse unit, replaced rig tbg line, unload and set pipe racks, cat walk and 2-7/8" work sting tbg. Test, NU 7-1/16" 5K BOP. Tally 195 jts 2-7/8" L-80 WS tbg, PU & RIH w/ 5-1/2" pkr & tag RBP @ 120', PU 10' above RBP, test RBP to 600#, leaked off 100# in 1 min. Test csg from 118' to surface to 500# leaked 100# in 1 min, continue to test from surface to 77', 45', 25', & 10' w' same results, would leak off 100# in 1 min. RIH to 118', retest RBP leaked, test csg from 110' to surface at 600#, good test. POOH & LD pkr, RIH w/ retrieving tool, latch onto RBP, pulled 25000 over tbg weight, test csg from top of RBP @ 140' to surface to 600#, good test. Unset RBP, POOH & LD RBP. RIH w/ 5-1/2" pkr, start to isolate csg leak, found top @ 967' & bottom hole @ 969', EIR @ 1.18 bpm @ 1050#.

Where set?
 Pulled yesterday
 no record of re-running

- 3/10/17 Tbg/csg/8-5/8"- 0#, dump 4sxs sand on top of RBP. POOH w/ 31 jts, LD pkr, RIH w/ 5-1/2" cmt retainer, 29 jts 2-7/8" tbg. Circ 30 bbls FW, set CR @ 927'. RU cmt trucks, test CR to 500#. M&P 725 sx Cl C cmt @ 1 bpm, ISIP-1450#, bleed off to 960#, sting out of CR, circ hole clean. POOH w/ 21 jts 2-7/8" L-80 tbg, LD cmt retainer stringer. RD cmt trucks.
- 3/13/17 PU 4-3/4" BIT, BIT SUB, 2 - 3-1/2" DRILL COLLARS, RIH W/ BHA FOLLOWED BY 24 JNTS 2-7/8" TBG, TAGGED CMT AT 915', LD 1 JNT. RU POWER SWIVEL & DRILL LINE. NU 7-1/16" 3K STRIPPER HEAD. DRILL OUT 12' CMT TO TOP OF CMT RETAINER @ 927'.
- 3/14/17 Tbg/Csg-0#, RIH, tag CR @ 928.5', drill out retainer cone, cmt, drilled out total 91' cmt, circ bottoms up, pressure test csg to 500# for 15 mins, good test, bleed off pressure.
- 3/15/17 CSG-0#, RD SWIVEL, ND STRIPPER HEAD, POOH & LD DRILL COLLARS & BIT. PUP ON/OFF TOOL, RIH & TAG SAND, RU POWER SWIVEL, NU STRIPPER HEAD, CLEAN SAND OFF RBP. CIRCULATE HOLE CLEAN W/ 10# BRINE. LATCH ONTO RBP @ 4382' AND UNSET IT, WELL HAD 600#, LET FLOW TO TANK.
- 3/16/17 CSG-400#, BLEED TO TANK, PUMP 25 BBL 15# MUD DOWN CSG AND 9 BBL 15# MUD DOWN TBG. RD POWER SWIVEL, ND STRIPPER HEAD, POOH WITH 40 JT'S, WELL STARTED TO BLOW. PUMP 3 BBL MUD DOWN TBG, AND 9 BBL MUD DOWN CSG. WELL ON STRONG VAC. POOH LAY DOWN RBP, PU BIT, BIT SUB, AND CHECK, RIH W/ TBG, TAG FILL @ 5799', PULL ABOVE PERF'S, CIRC OUT MUD.
- 3/17/17 CSG-0#, REPAIR REVERSE UNIT, NU STRIPPER HEAD, RIH & TAG FILL @ 5799', RIG UP POWER SWIVEL, CLEAN TO 5808', CIRC WELL BOTTOMS UP, RD POWER SWIVEL, POOH LD WS, ND STRIPPER HEAD.
- 3/20/17 CSG-520#, BLEED TO TANK (50# FLOWING). MIRU WL, ATTEMPT TO DUMP BAIL CMT W/ NO LUCK. GLASS DISC WOULD BREAK ON PRESSURE. CHANGE TOOLS AND RIH, TAG BOTTOM @ 5810' AND LOG TO SURFACE. CHANGE TOOLS BACK TO BAILER, PUMP A MUD CAP TO 2500', RIH, 1st RUN DUMP CMT @ 5810', POOH, TROUBLE WITH GLASS DISC. MIX CMT, RIH & DUMP CMT @ 5730. POOH, GOT STUCK @ 5686' WORKED IT FOR A BIT BUT COULD NOT GET FREE, PULL OUT OF SOCKET AND POOH. RD WL.
- 3/21/17 Csg had slight gas blow, bleed off and open well. PU & RIH w/ 155' of BHA: 4-11/16" overshot dressed with a 1-1/16" basket grapple, 3-3/4" bumper sub, 3-3/4" jars, 4 - 3-1/2" drill collars, 3-3/4" accelerator and top sub pick up followed by 179 jts 2-7/8" L-80 tbg, tag TOF @ 5767', latch on to fish pulled 4000# over tbg weight, something came free (did not gain or lose weight). POOH w/ 47 jts 2-7/8" tbg, tbg started to run over with mud, attempt to circ mud out w/ no luck. Pressure built up to 2500#, bleed off tbg, still running over got back 3 bbls of mud to mud tank when tbg started running over slightly with well fluid. POOH w/ 54 jts leaving end of of overshot @ 2580'.
- 3/22/17 TBG-200# CSG-50#, Bleed off to frac tanks, Pump 20 bbls 15# mud down csg, monitor well. Csg was on a vacuum & tbg had 0 psi. POOH w/ 37jts tbg, 3-3/4" accelerator, 4 - 3-1/2" drill collars, 3-3/4" jars, bumper sub, 4-11/16" overshot w/ fish (wireline bailer). RIH w/ 2-7/8" STD SN w/ 180 jts 2-7/8" L-80 tbg & tag at 5802', pick up 13' above PBDT. RU cmt truck, M&P 25sx cmt from 5802-5551'. PUH & WOC.
- 3/23/17 CSG-0#, OPEN TO PIT, RIH W/ 2-7/8" WS TBG & TAG CMT @ 5518', POOH & LD WS TBG.
- 3/24/17 CSG -#0 - TALLED TBG ON RACK - RIH W/ PKR & 134 JTS Duo-Line 2-7/8" TBG, LOAD TBG W/ 18 BBL, SET PKR @ 4392', CIRC WELL, RETURNED 50 BBLS MUD, THEN CIRC 97 BBLS PKR FLUID. ND BOP, NU WH FLANGE, PRESSURE TESTED CSG TO 500#, HELD FOR 30 MIN - TESTED GOOD. RU WL, RIH & BREAK CERAMIC DISK IN PKR - GOOD - BOTTOM HOLE PRESSURE -400#, RD WL.
- 3/27/17 CSG-0# - TBG-500# - RAN PRELIMINARY MIT TEST - PRESSURE UP CSG TO 500# FOR 30 MIN ON CHART RECORDER - TESTED GOOD - BLEED PRESSURE OFF TO REVERSE PIT - RD PU. WAITED ON BLM TO WITNESS MIT TEST - WHEN CONTACTED - STATED HE DID NOT NEED TO BE ON LOCATION - RUN MIT TEST, PRESSURE UP TO 560# FOR 30 MIN, TESTED GOOD.

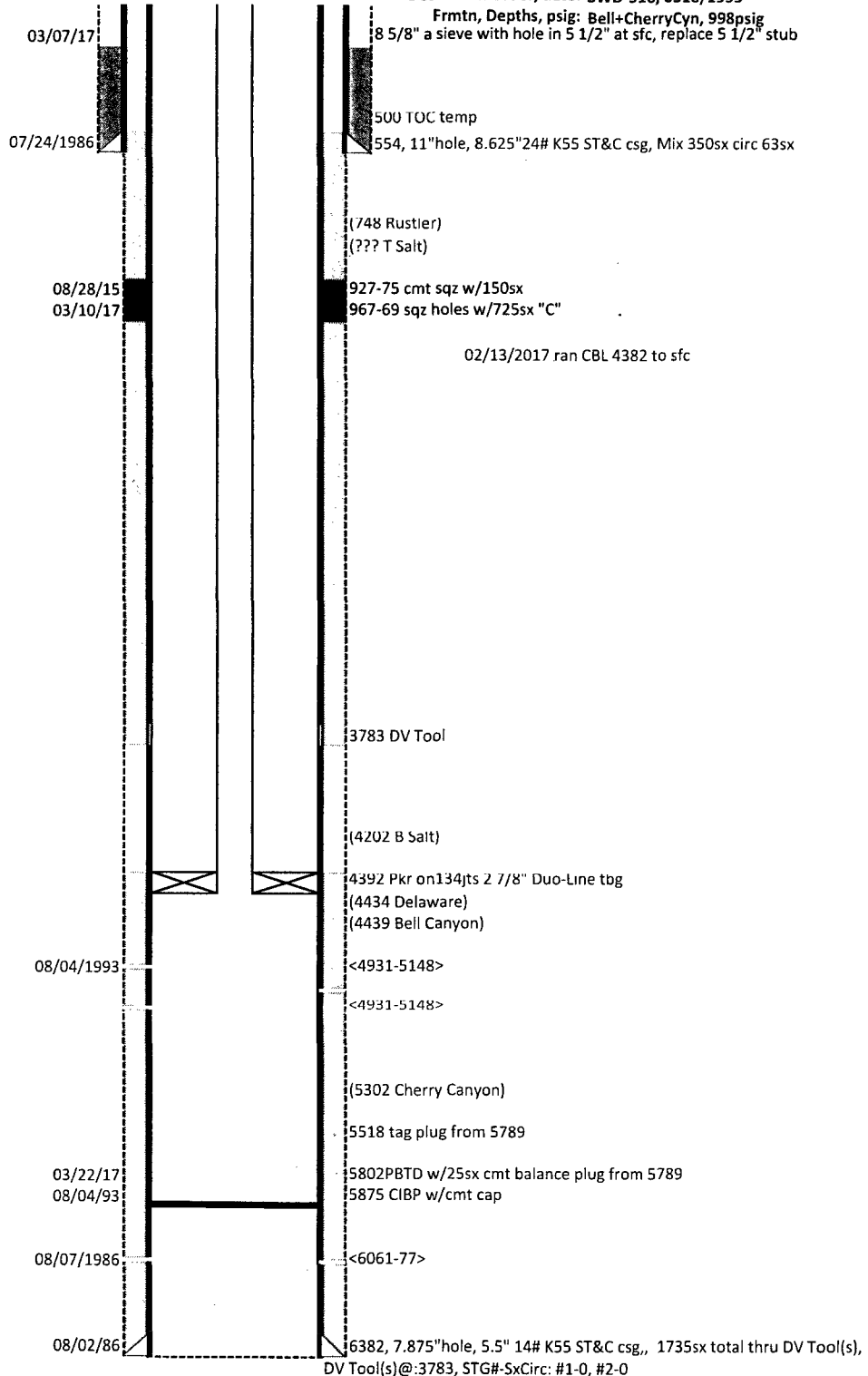


Operator: Oxy USA Inc
 Surface Lease: NM19199
 Case No: NM19199
 Subsurface Concerns for Casing Designs:
 Well Status: SWD
 Spud date: 7/23/1986
 Plug'd Date:
 Reentry Date:

BHL: NM19199
 Lease Agreement

Well: CAL-MON-5
 API: 3001525640
 @ Srfce: T23S-R31E,35.1980n1980e
 @ M TD: T23S-R31E,35.1980n1980e
 Estate: FIF
 CWDW, R of W:
 OCD Admn Order, date: SWD-516, 0518/1993
 Frmtn, Depths, psig: Bell+CherryCyn, 998psig
 8 5/8" a sieve with hole in 5 1/2" at sfc, replace 5 1/2" stub

KB: 3486
 GL: 3475
 Corr: 11



08/04/1993 CTD
 10/24/1995 MIT held 350 to 340psig 20m
 12/16/2010 MIT held 540 to 520 psig 25m
 08/24/2015 MIT failed to hold
 09/08/2015 MIT held 520psig 50m
 11/16/2015 MIT Failed to hold
 03/27/2017 MIT held 560-555psig 30m

Diagram last updated: 10/17/2017