

NM OIL CONSERVATION

ARTESIA DISTRICT

Form C-102

State of New Mexico
Energy, Minerals & Natural Resources Department

NOV 06 2017

Revised August 1, 2011

Submit one copy to appropriate
District Office

OIL CONSERVATION DIVISION

1220 South St. Francis Dr.
Santa Fe, New Mexico 87505

RECEIVED

AMENDED REPORT

DISTRICT I

1625 N. French Dr., Hobbs, NM 88240
Phone: (575) 393-6161 Fax: (575) 393-0720

DISTRICT II

811 S. First St., Artesia, NM 88210
Phone: (575) 748-1283 Fax: (575) 748-9720

DISTRICT III

1000 Rio Brazos Road, Aztec, NM 87410
Phone: (505) 334-6178 Fax: (505) 334-6170

DISTRICT IV

1220 S. St. Francis Dr., Santa Fe, NM 87505
Phone: (505) 476-3460 Fax: (505) 476-3462

WELL LOCATION AND ACREAGE DEDICATION PLAT

API Number 30-015-44274	Pool Code 98917	Pool Name Dodd; Glorieta-Upper, Yeso
Property Code 308195	Property Name DODD FEDERAL UNIT	Well Number 908H
OGRID No. 229137	Operator Name COG OPERATING, LLC	Elevation 3626'

Surface Location

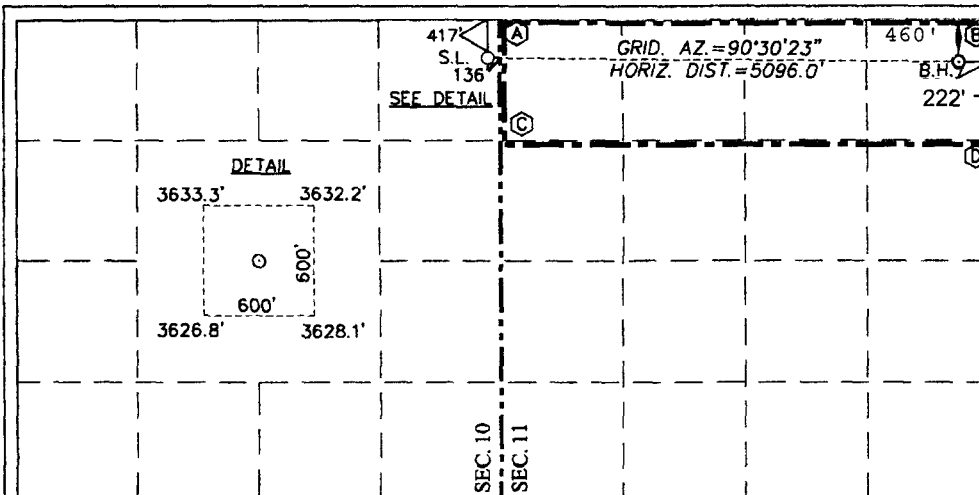
UL or lot No.	Section	Township	Range	Lot Idn	Feet from the	North/South line	Feet from the	East/West line	County
A	10	17-S	29-E		417	NORTH	136	EAST	EDDY

Bottom Hole Location If Different From Surface

UL or lot No.	Section	Township	Range	Lot Idn	Feet from the	North/South line	Feet from the	East/West line	County
A	11	17-S	29-E		460	NORTH	222	EAST	EDDY

Dedicated Acres	Joint or Infill	Consolidation Code	Order No.
160			

NO ALLOWABLE WILL BE ASSIGNED TO THIS COMPLETION UNTIL ALL INTERESTS HAVE BEEN CONSOLIDATED OR A NON-STANDARD UNIT HAS BEEN APPROVED BY THE DIVISION



OPERATOR CERTIFICATION

I hereby certify that the information herein is true and complete to the best of my knowledge and belief, and that this organization either owns a working interest or unleased mineral interest in the land including the proposed bottom hole location or has a right to drill this well at this location pursuant to a contract with an owner of such mineral or working interest, or to a voluntary pooling agreement or a compulsory pooling order heretofore entered by the division.

Signature: K C Date: 11/01/17
Printed Name: Kanicia Castillo
E-mail Address: kcastillo@concho.com

SURVEYOR CERTIFICATION

I hereby certify that the well location shown on this plat was plotted from field notes of actual surveys made by me or under my supervision, and that the same is true and correct to the best of my belief.

JANUARY 13, 2012

Date of Survey
Signature & Seal of Professional Surveyor:

Ronald J. Eidson
Professional Surveyor
Certificate Number: 12641
Gary C. Eidson 12641
Ronald J. Eidson 3239
DSR Ref: 12.13.1398

CORNER COORDINATES TABLE

- Ⓐ - Y=675329.9 N, X=585912.5 E
- Ⓑ - Y=675322.3 N, X=591200.5 E
- Ⓒ - Y=674009.3 N, X=585916.2 E
- Ⓓ - Y=674002.2 N, X=591205.2 E

GEODETIC COORDINATES NAD 27 NME

SURFACE LOCATION

Y=674912.6 N
X=585777.6 E

LAT.=32.855107° N
LONG.=104.054004° W

BOTTOM HOLE LOCATION

Y=674867.5 N
X=590872.2 E