

District I  
1625 N. French Dr., Hobbs, NM 88240  
Phone: (575) 393-6161 Fax: (575) 393-0720  
District II  
811 S. First St., Artesia, NM 88210  
Phone: (575) 748-1283 Fax: (575) 748-9720  
District III  
1000 Rio Brazos Road, Aztec, NM 87410  
Phone: (505) 334-6178 Fax: (505) 334-6170  
District IV  
1220 S. St. Francis Dr., Santa Fe, NM 87505  
Phone: (505) 476-3460 Fax: (505) 476-3462

**NM OIL CONSERVATION** of New Mexico  
Energy, Minerals & Natural Resources Department  
ARTESIA DISTRICT

NOV 22 2017

1220 South St. Francis Dr.

Santa Fe, NM 87505

RECEIVED

Form C-102

Revised August 1, 2011

Submit one copy to appropriate

District Office

☐ AMENDED REPORT

**WELL LOCATION AND ACREAGE DEDICATION PLAT**

<sup>1</sup> API Number <b>30-015-44578</b>	<sup>2</sup> Pool Code <b>98220</b>	<sup>3</sup> Pool Name <b>PURPLE SAGE WOLFCAMP</b>
<sup>4</sup> Property Code <b>320080</b>	<sup>5</sup> Property Name <b>FNR 17/20 W2IP FEDERAL COM</b>	<sup>6</sup> Well Number <b>3H</b>
<sup>7</sup> OGRID NO. <b>14744</b>	<sup>8</sup> Operator Name <b>MEWBOURNE OIL COMPANY</b>	<sup>9</sup> Elevation <b>3218'</b>

<sup>10</sup> Surface Location

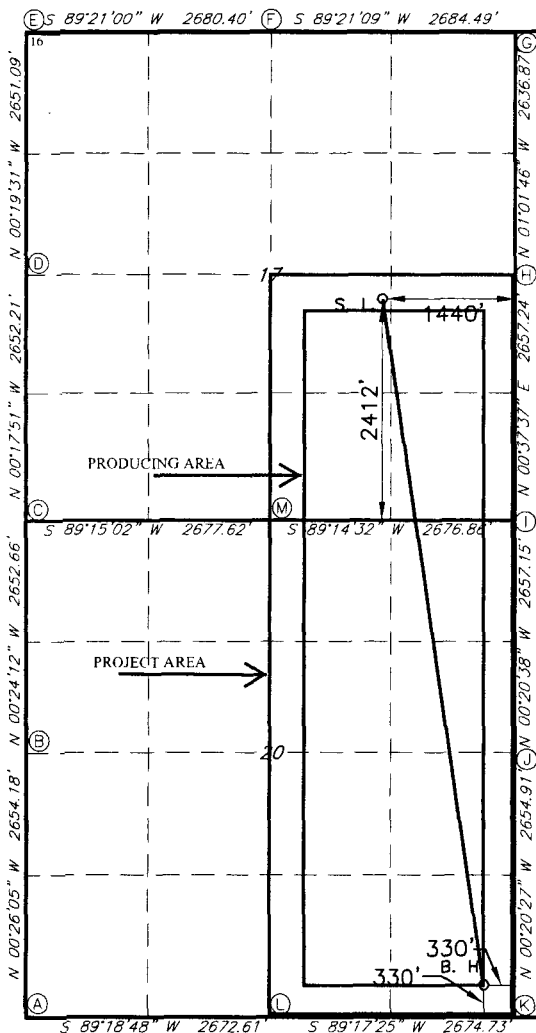
UL or lot no.	Section	Township	Range	Lot Idn	Feet from the	North/South line	Feet From the	East/West line	County
<b>J</b>	<b>17</b>	<b>23S</b>	<b>30E</b>		<b>2412</b>	<b>SOUTH</b>	<b>1440</b>	<b>EAST</b>	<b>EDDY</b>

<sup>11</sup> Bottom Hole Location If Different From Surface

UL or lot no.	Section	Township	Range	Lot Idn	Feet from the	North/South line	Feet from the	East/West line	County
<b>0 P</b>	<b>20</b>	<b>23S</b>	<b>30E</b>		<b>330</b>	<b>SOUTH</b>	<b>330</b>	<b>EAST</b>	<b>EDDY</b>

<sup>12</sup> Dedicated Acres <b>480</b>	<sup>13</sup> Joint or Infill	<sup>14</sup> Consolidation Code	<sup>15</sup> Order No.
---	-------------------------------	----------------------------------	-------------------------

No allowable will be assigned to this completion until all interest have been consolidated or a non-standard unit has been approved by the division.



**GEODETIC DATA**  
NAD 83 GRID - NM EAST  
SURFACE LOCATION  
N: 474760.0 - E: 675368.7  
LAT: 32.3044430° N  
LONG: 103.8995201° W  
BOTTOM HOLE  
N: 467382.7 - E: 676481.8  
LAT: 32.2841519° N  
LONG: 103.8960151° W

**GEODETIC DATA**  
NAD 27 GRID - NM EAST  
SURFACE LOCATION  
N: 474700.4 - E: 634185.6  
LAT: 32.3043207° N  
LONG: 103.8990303° W  
BOTTOM HOLE  
N: 467323.3 - E: 635298.4  
LAT: 32.2840294° N  
LONG: 103.8955262° W

**CORNER DATA**  
NAD 83 GRID - NM EAST  
A: FOUND BRASS CAP "1942"  
N: 466991.7 - E: 671467.8  
B: FOUND BRASS CAP "1942"  
N: 469645.3 - E: 671447.7  
C: FOUND BRASS CAP "1942"  
N: 472297.3 - E: 671429.0  
D: FOUND BRASS CAP "1942"  
N: 474948.9 - E: 671415.3  
E: FOUND BRASS CAP "1942"  
N: 477599.4 - E: 671400.2  
F: FOUND BRASS CAP "1942"  
N: 477529.8 - E: 674079.9  
G: FOUND BRASS CAP "1942"  
N: 477660.1 - E: 676763.6  
H: FOUND BRASS CAP "1942"  
N: 475024.2 - E: 676811.0  
I: FOUND BRASS CAP "1942"  
N: 472367.7 - E: 676781.9  
J: FOUND BRASS CAP "1942"  
N: 469711.2 - E: 676797.8  
K: FOUND BRASS CAP "1942"  
N: 467056.9 - E: 676813.6  
L: FOUND BRASS CAP "1942"  
N: 467023.8 - E: 674139.7  
M: FOUND BRASS CAP "1942"  
N: 472332.3 - E: 674105.8

**<sup>17</sup> OPERATOR CERTIFICATION**

I hereby certify that the information contained herein is true and complete to the best of my knowledge and belief, and that this organization either owns a working interest or unleased mineral interest in the land including the proposed bottom hole location or has a right to drill this well at this location pursuant to a contract with an owner of such a mineral or working interest, or to a voluntary pooling agreement or a compulsory pooling order heretofore entered by the division.

Signature **BRADLEY BISHOP** Date **5-31-17**  
Printed Name  
E-mail Address **BBISHOP@MEWBOURNE.COM**

**<sup>18</sup> SURVEYOR CERTIFICATION**

I hereby certify that the well location shown on this plat was plotted from field notes of actual surveys made by me or under my supervision, and that the same is true and correct to the best of my belief.

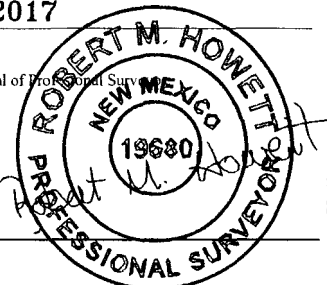
**5-15-2017**

Date of Survey

Signature and Seal of Professional Surveyor

**19680**

Certificate Number



R/R 12-01-17  
NSP Required

RRG-Job No.: LS1704213

**United States Department of the Interior  
Bureau of Land Management  
Carlsbad Field Office  
620 E Greene Street  
Carlsbad, New Mexico 88201-1287**

**Statement Accepting Responsibility for Operations**

Operator Name: Mewbourne Oil Company  
Street or Box: P.O. Box 5270  
City, State: Hobbs, New Mexico  
Zip Code: 88241

The undersigned accepts all applicable terms, conditions, stipulations, and restrictions concerning operations conducted of the leased land or portion thereof, as described below.

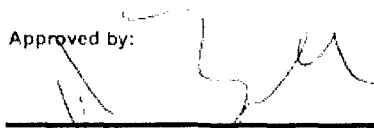
Lease Number:

Legal Description of Land: Section 17 T23S R30E, Eddy County, New Mexico.  
Location @ 2412' FSL & 1440' FEL  
Formation (if applicable): Wolfcamp

Bond Coverage: \$150,000

BLM Bond File: NM1693 Nationwide, NMB - 000919

Approved by:



Name: Robin Terrell  
Title: District Manager  
Date: 05-31-2017