

District I  
1625 N. French Dr., Hobbs, NM 88240  
Phone: (575) 393-6161 Fax: (575) 393-0720  
District II  
811 S. First St., Artesia, NM 88210  
Phone: (575) 748-1283 Fax: (575) 748-9720  
District III  
1000 Rio Brazos Road, Aztec, NM 87410  
Phone: (505) 334-6178 Fax: (505) 334-6170  
District IV  
1220 S. St. Francis Dr., Santa Fe, NM 87505  
Phone: (505) 476-3460 Fax: (505) 476-3462

State of New Mexico  
Energy, Minerals & Natural Resources Department  
OIL CONSERVATION DIVISION  
1220 South St. Francis Dr.  
Santa Fe, NM 87505

Form C-102  
Revised August 1, 2011  
Submit one copy to appropriate District Office  
ARTESIA DISTRICT  
JAN 31 2018 AMENDED REPORT

WELL LOCATION AND ACREAGE DEDICATION PLAN

RECEIVED

<sup>1</sup> API Number <b>30-015-44619</b>	<sup>2</sup> Pool Code <b>9670</b>	<sup>3</sup> Pool Name <b>CARLSBAD; BONE SPRING, SOUTH</b>
<sup>4</sup> Property Code <b>325044</b>	<sup>5</sup> Property Name <b>STERLING STATE 23-27-20 TB</b>	
<sup>7</sup> OGRID No. <b>372098</b>	<sup>8</sup> Operator Name <b>MARATHON OIL PERMIAN LLC</b>	
		<sup>6</sup> Well Number <b>4H</b>
		<sup>9</sup> Elevation <b>3181'</b>

<sup>10</sup> Surface Location

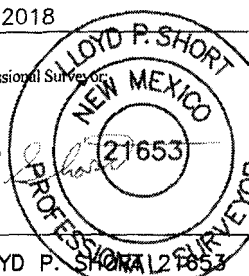
UL or lot no.	Section	Township	Range	Lot Idn	Feet from the	North/South line	Feet from the	East/West line	County
O	20	23S	27E		603	SOUTH	1462	EAST	EDDY

" Bottom Hole Location If Different From Surface

UL or lot no.	Section	Township	Range	Lot Idn	Feet from the	North/South line	Feet from the	East/West line	County
A	20	23S	27E		330	NORTH	992	EAST	EDDY

<sup>12</sup> Dedicated Acres <b>160.00</b>	<sup>13</sup> Joint or Infill	<sup>14</sup> Consolidation Code	<sup>15</sup> Order No.
--	-------------------------------	----------------------------------	-------------------------

No allowable will be assigned to this completion until all interests have been consolidated or a non-standard unit has been approved by the division.

<sup>16</sup> SECTION 18 SECTION 19 SECTION 20 LAST TAKE POINT/BOTTOM HOLE LOCATION 330' FNL 992' FEL SECTION 20 NAD 83, SPCS NM EAST X:580443.55' / Y:471677.74' LAT:32.29665322N / LON:104.2067708W NAD 27, SPCS NM EAST X:539261.39' / Y:471619.02' LAT:32.2965333N / LON:104.2062709W  FIRST TAKE POINT 330' FSL 988' FEL SECTION 20 NAD 83, SPCS NM EAST X:580460.18' / Y:467037.21' LAT:32.2838960N / LON:104.2067347W NAD 27, SPCS NM EAST X:539277.92' / Y:466978.61' LAT:32.2837770N / LON:104.2062332W  SURFACE HOLE LOCATION 603' FSL 1462' FEL SECTION 20 NAD 83, SPCS NM EAST X:579984.87' / Y:467313.53' LAT:32.28465704N / LON:104.20827171W NAD 27, SPCS NM EAST X:538802.63' / Y:467254.93' LAT:32.28453807N / LON:104.2077217W  SECTION 19 SECTION 30 SECTION 29 CORNER COORDINATES NAD 83, SPCS NM EAST A - X: 580112.37' / Y: 472008.28' B - X: 581435.11' / Y: 472006.12' C - X: 581448.80' / Y: 466700.36' D - X: 580131.33' / Y: 466709.49'  CORNER COORDINATES NAD 27, SPCS NM EAST A - X: 538930.22' / Y: 471949.56' B - X: 540232.94' / Y: 471947.38' C - X: 540266.52' / Y: 466641.76' D - X: 538949.09' / Y: 466650.90'		<sup>17</sup> OPERATOR CERTIFICATION I hereby certify that the information contained herein is true and complete to the best of my knowledge and belief, and that this organization either owns a working interest or unleased mineral interest in the land including the proposed bottom hole location or has a right to drill this well at this location pursuant to a contract with an owner of such a mineral or working interest, or to a voluntary pooling agreement or a compulsory pooling order heretofore entered by the division.  Signature <u>Jennifer Van Curen</u> 1/31/18 Date Printed Name <b>Jennifer Van Curen</b> E-mail Address <b>jvancuren@marathonoil.com</b>  <sup>18</sup> SURVEYOR CERTIFICATION I hereby certify that the well location shown on this plat was plotted from field notes of actual surveys made by me or under my supervision, and that the same is true and correct to the best of my belief.  JANUARY 31, 2018 Date of Survey Signature and Seal of Professional Surveyor  Certificate Number <b>LLOYD P. SHORT 21653</b>
---	--	---

1 01/16/2018 CAP  
REV. DATE BY

[illegible]

SCALE: 1" = 2000'  
CONTOUR INTERVAL = 5'

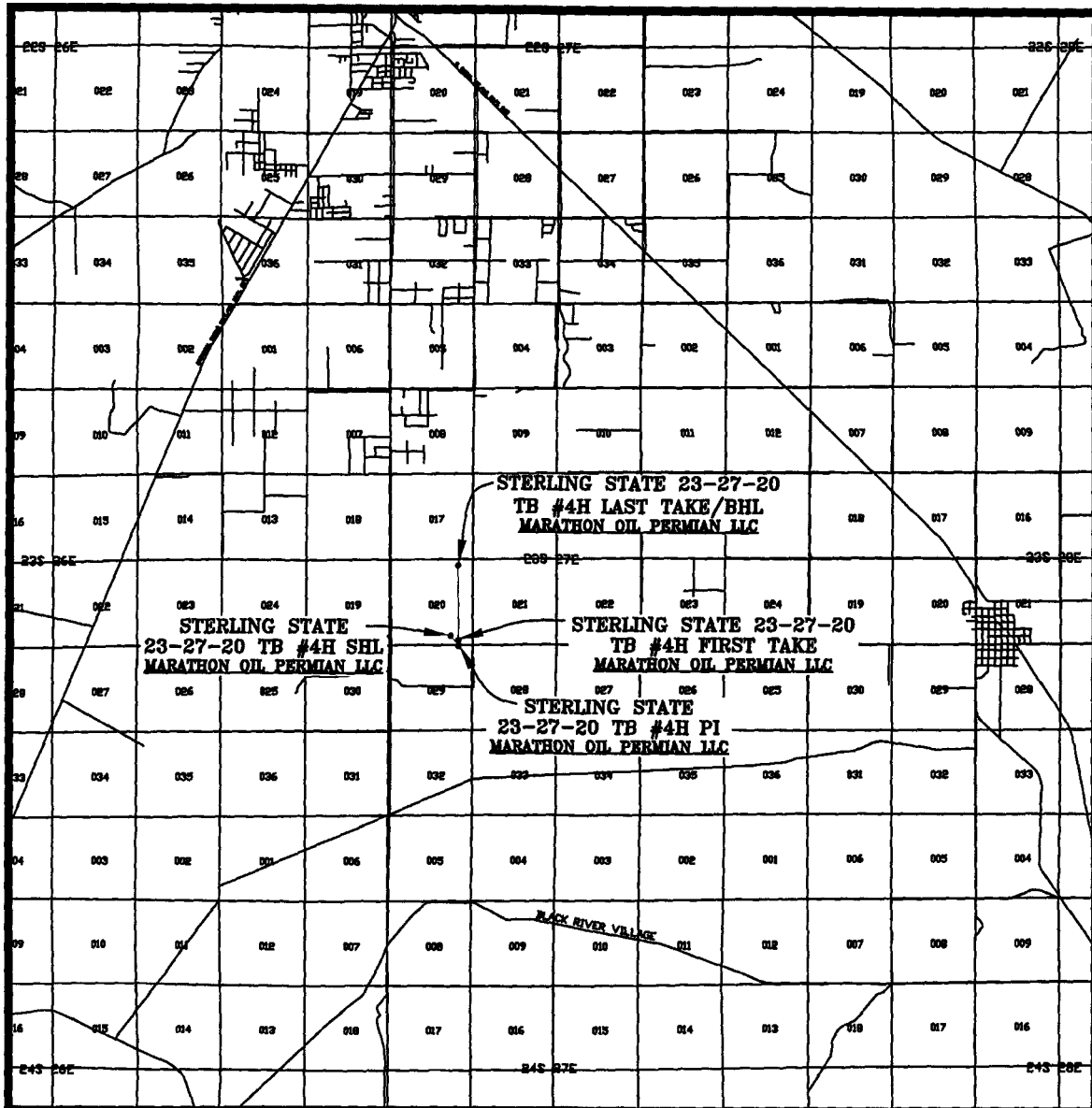
PREPARED BY:  
R-SQUARED GLOBAL, LLC  
1309 LOUISVILLE AVENUE, MONROE, LA 71201  
318-323-6900 OFFICE  
JOB No. R3771.005

NM OIL CONSERVATION  
ARTESIA DISTRICT

# VICINITY MAP

JAN 31 2018

RECEIVED



SEC. 20 TWP. 23-S RGE. 27-E  
SURVEY: N.M.P.M.  
COUNTY: EDDY  
DESCRIPTION: 603' FSL & 1462' FEL  
ELEVATION: 3181'  
OPERATOR: MARATHON OIL PERMIAN LLC  
LEASE: STERLING STATE 23-27-20  
U.S.G.S. TOPOGRAPHIC MAP: OTIS, N.M.

SCALE: 1" = 2 MILES

PREPARED BY:  
R-SQUARED GLOBAL, LLC  
1309 LOUISVILLE AVENUE, MONROE, LA 71201  
318-323-6900 OFFICE  
JOB No. R3771\_005