

DISTRICT I
1825 N. FRENCH DR., HOBBS, NM 88240
Phone: (505) 393-6181 Fax: (505) 393-9720

DISTRICT II
811 S. FIRST ST., ARTESIA, NM 88210
Phone: (505) 334-6178 Fax: (505) 334-6170

DISTRICT III
1000 RIO BRAZOS RD., AZTEC, NM 87410
Phone: (505) 334-6178 Fax: (505) 334-6170

DISTRICT IV
1220 S. ST. FRANCIS DR., SANTA FE, NM 87505
Phone: (505) 476-3460 Fax: (505) 476-3462

State of New Mexico
Energy, Minerals & Natural Resources Department
OIL CONSERVATION DIVISION
1220 SOUTH ST. FRANCIS DR.
Santa Fe, New Mexico 87505

Form C-102
Revised August 1, 2011
Submit one copy to appropriate District Office
FEB 08 2018

RECEIVED

☐ AMENDED REPORT

WELL LOCATION AND ACREAGE DEDICATION PLAT

API Number 30-015- 44626	Pool Code 96101	Pool Name SWD; DEVONIAN
Property Code 320714	Property Name MESA VERDE SWD	Well Number 3
OGRID No. 161968	Operator Name MESQUITE SWD	Elevation 3597.2'

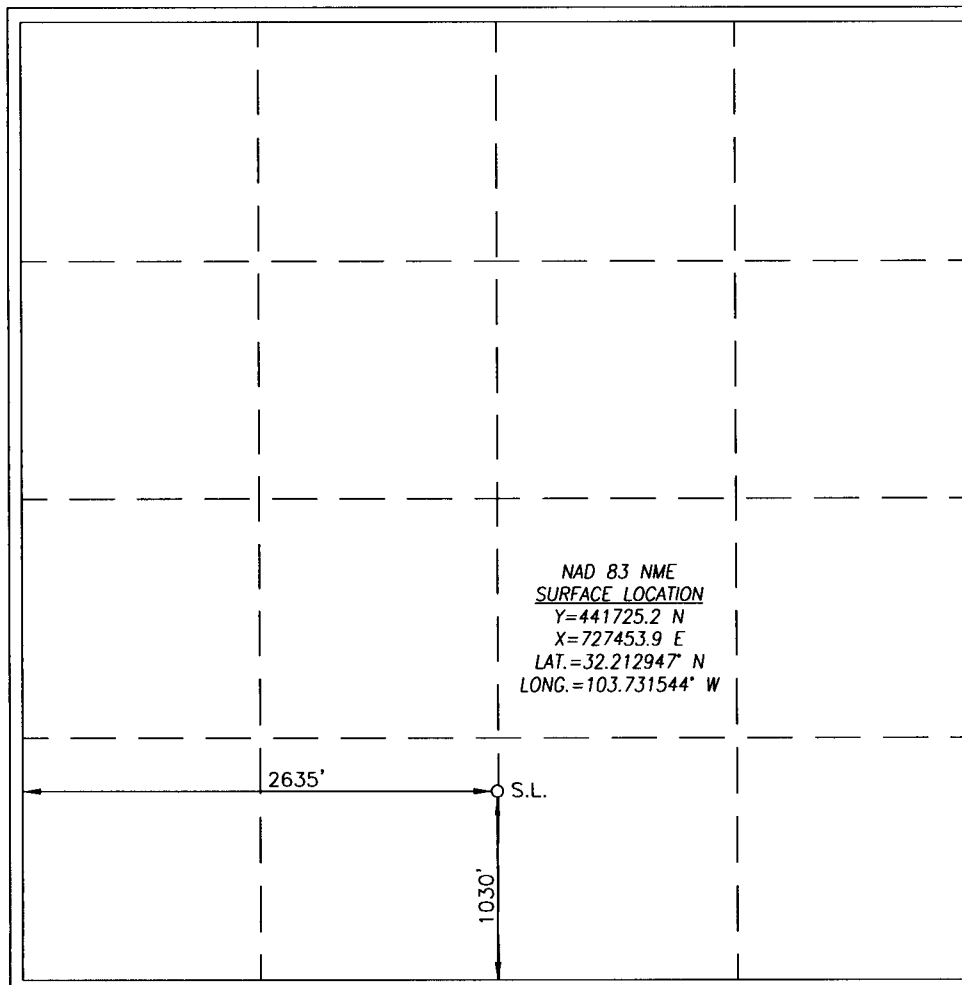
Surface Location

UL or lot No.	Section	Township	Range	Lot Idn	Feet from the	North/South line	Feet from the	East/West line	County
N	13	24-S	31-E		1030	SOUTH	2635	WEST	EDDY

Bottom Hole Location If Different From Surface

UL or lot No.	Section	Township	Range	Lot Idn	Feet from the	North/South line	Feet from the	East/West line	County
Dedicated Acres	Joint or Infill	Consolidation Code	Order No.						

NO ALLOWABLE WILL BE ASSIGNED TO THIS COMPLETION UNTIL ALL INTERESTS HAVE BEEN CONSOLIDATED
OR A NON-STANDARD UNIT HAS BEEN APPROVED BY THE DIVISION



OPERATOR CERTIFICATION

I hereby certify that the information herein is true and complete to the best of my knowledge and belief, and that this organization either owns a working interest or unleased mineral interest in the land including the proposed bottom hole location or has a right to drill this well at this location pursuant to a contract with an owner of such mineral or working interest, or to a voluntary pooling agreement or a compulsory pooling order heretofore entered by the division.

Melanie J. Wilson 10/10/2017
Signature Date

Melanie J. Wilson

Printed Name

mjp1692@gmail.com

E-mail Address

SURVEYOR CERTIFICATION

I hereby certify that the well location shown on this plat was plotted from field notes of actual surveys made by me or under my supervision, and that the same is true and correct to the best of my belief.

AUGUST 28, 2017

Date of Survey

Signature & Seal of Professional Surveyor



Certificate No. CHAD HARCROW 17777
W.O. # 17-1225 DRAWN BY: AI

rw 2-9-18