

District I
1625 N. French Dr., Hobbs, NM 88240
Phone: (575) 393-6161 Fax: (575) 393-0720

District II
811 S. First St., Artesia, NM 88210
Phone: (575) 748-1283 Fax: (575) 748-9720

District III
1000 Rio Brazos Road, Aztec, NM 87410
Phone: (505) 334-6178 Fax: (505) 334-6170

District IV
1220 S. St. Francis Dr., Santa Fe, NM 87505
Phone: (505) 476-3460 Fax: (505) 476-3462

State of New Mexico
Energy, Minerals & Natural Resources Department
OIL CONSERVATION DIVISION
1220 South St. Francis Dr.
Santa Fe, NM 87505

Form C-102
Revised August 1, 2011
Submit one copy to appropriate District Office
☐ AMENDED REPORT

FEB 14 2018

RECEIVED

WELL LOCATION AND ACREAGE DEDICATION PLAT

¹ API Number 30-015-43369	² Pool Code 40295	³ Pool Name Los Medanos (Bone Spring)
⁴ Property Code 40141	⁵ Property Name JAMES RANCH UNIT D12	
⁷ OGRID No. 2160737	⁸ Operator Name BOPCO, L.P.	⁶ Well Number 194Y
		⁹ Elevation 3343'

¹⁰ Surface Location

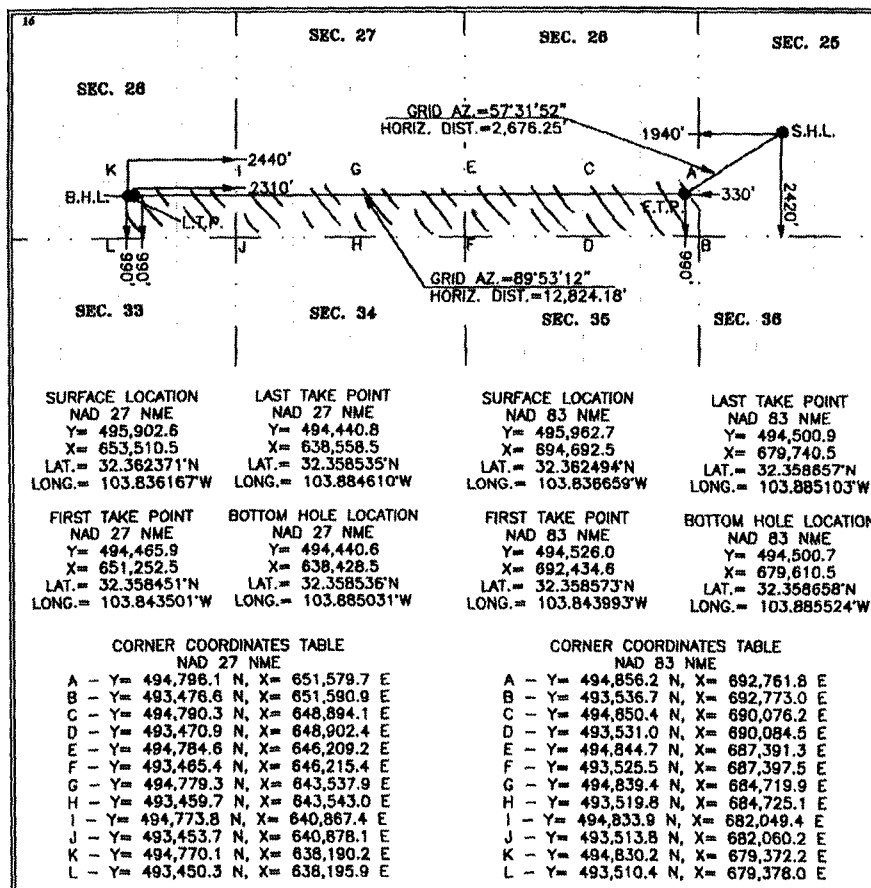
UL or lot no.	Section	Township	Range	Lot Idn	Feet from the	North/South line	Feet from the	East/West line	County
K	25	22 S	30 E		2,420	SOUTH	1,940	WEST	EDDY

¹¹ Bottom Hole Location If Different From Surface

UL or lot no.	Section	Township	Range	Lot Idn	Feet from the	North/South line	Feet from the	East/West line	County
O	28	22 S	30 E		990	SOUTH	2,440	EAST	EDDY

¹² Dedicated Acres 400	¹³ Joint or Infill	¹⁴ Consolidation Code	¹⁵ Order No.
--------------------------------------	-------------------------------	----------------------------------	-------------------------

No allowable will be assigned to this completion until all interests have been consolidated or a non-standard unit has been approved by the division.



¹⁷ OPERATOR CERTIFICATION
I hereby certify that the information contained herein is true and complete to the best of my knowledge and belief, and that this organization either owns a working interest or undivided mineral interest in the land including the proposed bottom hole location or has a right to drill this well at this location pursuant to a contract with an owner of such a mineral or working interest, or to a voluntary pooling agreement or a compulsory pooling order heretofore entered by the division.

Signature: Stephanie Rabadue Date: 2-8-18

Printed Name: Stephanie Rabadue

E-mail Address: stephanie_rabadue@xtoenergy.com

¹⁸ SURVEYOR CERTIFICATION
I hereby certify that the well location shown on this plat was plotted from field notes of actual surveys made by me or under my supervision, and that the same is true and correct to the best of my belief.

Date of Survey: 02-08-2018

Signature and Seal of Professional Surveyor: [Signature]

MARK DILLON HARP 23786
Certificate Number: 23786 AI 2017050664

FEB 14 2010

**PECOS DISTRICT
CONDITIONS OF APPROVAL**

RECEIVED

OPERATOR'S NAME:	BOPCO, L.P.
LEASE NO.:	NMNM-0307337
WELL NAME & NO.:	James Ranch Unit DI2 194Y
SURFACE HOLE FOOTAGE:	2420' FSL & 1940' FWL
BOTTOM HOLE FOOTAGE	0900' FSL & 2440' FEL Sec. 28, T. 22 S., R 30 E.
LOCATION:	Section 25, T. 22 S., R 30 E., NMPM
COUNTY:	Eddy County, New Mexico

All previous COAs still apply except for the following:

A. CASING

Changes to the approved APD casing program need prior approval if the items substituted are of lesser grade or different casing size or are Non-API. The Operator can exchange the components of the proposal with that of superior strength (i.e. changing from J-55 to N-80, or from 36# to 40#). Changes to the approved cement program need prior approval if the altered cement plan has less volume or strength or if the changes are substantial (i.e. Multistage tool, ECP, etc.). The initial wellhead installed on the well will remain on the well with spools used as needed.

Centralizers required on surface casing per Onshore Order 2.III.B.1.f.

Wait on cement (WOC) for Potash Areas:

After cementing but before commencing any tests, the casing string shall stand cemented under pressure until both of the following conditions have been met: 1) cement reaches a minimum compressive strength of 500 psi for all cement blends, 2) until cement has been in place at least 24 hours. WOC time will be recorded in the driller's log.

Provide compressive strengths including hours to reach required 500 pounds compressive strength prior to cementing each casing string. Have well specific cement details onsite prior to pumping the cement for each casing string.

No pea gravel permitted for remedial or fall back remedial without prior authorization from the BLM engineer.

**R-111-P-Potash
WIPP**

Possibility of water flows in the Salado and Castile.

Possibility of lost circulation in the Red Beds, Rustler, and Delaware.

Abnormal pressure may be encountered within the 3rd Bone Spring Sand.

1. The **13-3/8 inch** surface casing shall be set at approximately **640 feet** (a minimum of 25 feet into the Rustler Anhydrite and above the salt) and cemented to the surface. **If salt is encountered, set casing at least 25 feet above the salt.**
 - a. If cement does not circulate to the surface, the appropriate BLM office shall be notified and a temperature survey utilizing an electronic type temperature survey with surface log readout will be used or a cement bond log shall be run to verify the top of the cement. Temperature survey will be run a minimum of six hours after pumping cement and ideally between 8-10 hours after completing the cement job.
 - b. **Wait on cement (WOC) time for a primary cement job is to include the lead cement slurry.**
 - c. Wait on cement (WOC) time for a remedial job will be a minimum of 4 hours after bringing cement to surface or 500 pounds compressive strength, whichever is greater.
 - d. If cement falls back, remedial cementing will be done prior to drilling out that string.

Intermediate casing must be kept 1/2 fluid filled to meet BLM minimum collapse requirement.

2. The minimum required fill of cement behind the **9-5/8 inch** intermediate casing is:

Operator has proposed DV tool at depth of 3820', but will adjust cement proportionately if moved. DV tool shall be set a minimum of 50' below previous shoe and a minimum of 200' above current shoe. Operator shall submit sundry if DV tool depth cannot be set in this range. If an ECP is used, it is to be set a minimum of 50' below the shoe to provide cement across the shoe. If it cannot be set below the shoe, a CBL shall be run to verify cement coverage.

- a. First stage to DV tool:
 - ☒ Cement to circulate. If cement does not circulate, contact the appropriate BLM office before proceeding with second stage cement job. Operator should have plans as to how they will achieve approved top of cement on the next stage.
- b. Second stage above DV tool:
 - ☒ Cement to surface. If cement does not circulate, contact the appropriate BLM office. **Excess calculates to -18% - additional cement will be required.**

3. The minimum required fill of cement behind the 5 1/2 inch production casing is:

☒ Cement to surface. Operator shall provide method of verification. **Excess calculates to 23% - additional cement may be required.**

4. If hardband drill pipe is rotated inside casing, returns will be monitored for metal. If metal is found in samples, drill pipe will be pulled and rubber protectors which have a larger diameter than the tool joints of the drill pipe will be installed prior to continuing drilling operations.

5. Whenever a casing string is cemented in the R-111-P potash area, the NMOCD requirements shall be followed.

B. WIPP Requirements

The proposed well is located within 330' of the WIPP Land Withdrawal Area boundary. As a result, BOPCO, L.P. is required to submit daily drilling reports, logs and deviation survey information to the Bureau of Land Management and the Department of Energy per requirements of the Joint Powers Agreement until a total vertical depth of 7,000 feet is reached. These reports will have at a minimum the rate of penetration and a clearly marked section showing the deviation for each 500 foot interval. Operator may be required to do more frequent deviation surveys based on the daily information submitted and may be required to take other corrective measures. Information from this well will be included in the Quarterly Drilling Report. Information will also be provided to the New Mexico Oil Conservation Division after drilling activities have been completed. Upon completion of the well, the operator shall submit a complete directional survey. Any future entry into the well for purposes of completing additional drilling will require supplemental information.

BOPCO, L.P. can email the required information to Mr. Melvin Balderrama at Melvin.Balderama@wipp.ws or Mr. J. Neatherlin at Jimmy.Neatherlin@wipp.ws fax to his attention at 575-234-6062.

MHH 02132018