

District I
1625 N. French Dr., Hobbs, NM 88240
Phone: (575) 393-6161 Fax: (575) 393-0720
District II
811 S. First St., Artesia, NM 88210
Phone: (575) 748-1283 Fax: (575) 748-9720
District III
1000 Rio Brazos Road, Aztec, NM 87410
Phone: (505) 334-6178 Fax: (505) 334-6170
District IV
1220 S. St. Francis Dr., Santa Fe, NM 87505
Phone: (505) 476-3460 Fax: (505) 476-3462

State of New Mexico
Energy, Minerals & Natural Resources Department
OIL CONSERVATION DIVISION
1220 South St. Francis Dr. Santa Fe, NM 87505

Form C-102
Revised August 1, 2011
Submit one copy to appropriate District Office

NM OIL CONSERVATION
ARTESIA DISTRICT

☐ AMENDED REPORT

FEB 20 2018

WELL LOCATION AND ACREAGE DEDICATION PLAT

¹ API Number 30-015-44736	² Pool Code 98220	³ Pool Name PURPLE HOLE (WOLFCAMP)
⁴ Property Code 320807	⁵ Property Name MARINER FEE 23-28-19 WA	⁶ Well Number 10H
⁷ OGRID No. 372098	⁸ Operator Name MARATHON OIL PERMIAN LLC	⁹ Elevation 3066'

¹⁰ Surface Location

UL or lot no.	Section	Township	Range	Lot Idn	Feet from the	North/South line	Feet from the	East/West line	County
0	18	23S	28E		665	SOUTH	1653	EAST	EDDY

¹¹ Bottom Hole Location If Different From Surface

UL or lot no.	Section	Township	Range	Lot Idn	Feet from the	North/South line	Feet from the	East/West line	County
P	19	23S	28E		330	SOUTH	662	EAST	EDDY

¹² Dedicated Acres 320.00	¹³ Joint or Infill	¹⁴ Consolidation Code	¹⁵ Order No.
---	-------------------------------	----------------------------------	-------------------------

No allowable will be assigned to this completion until all interests have been consolidated or a non-standard unit has been approved by the division.

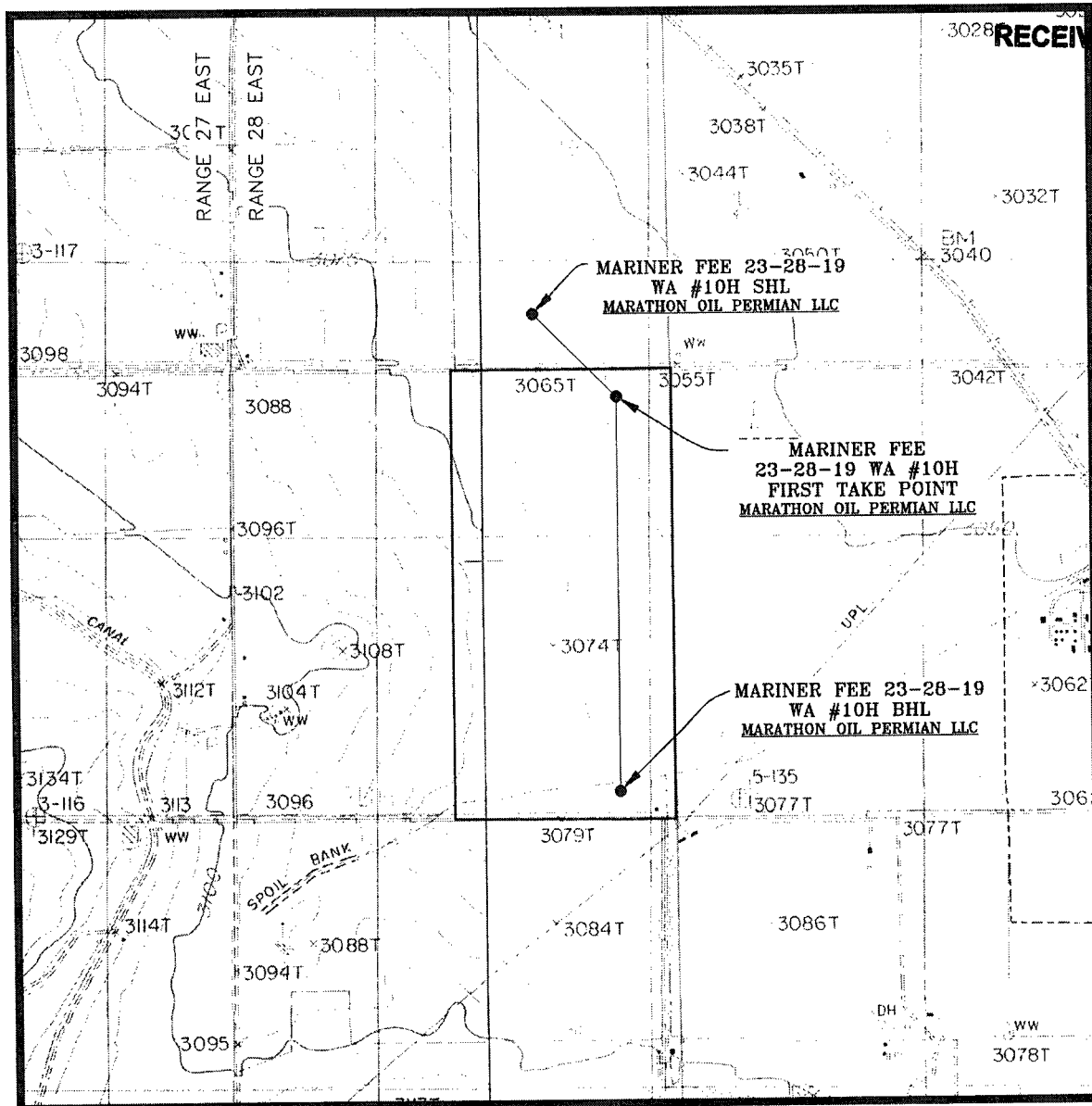
<p>¹⁶</p> <p>R27E R28E</p> <p>SURFACE HOLE LOCATION 665' FSL 1653' FEL SECTION 18 NAD 83, SPCS NM EAST Y:472876.88' / X:606174.32' LAT:32.29983753N / LON:104.12348871W NAD 27, SPCS NM EAST Y:472817.80' / X:564991.79' LAT:32.29971740N / LON:104.12299194W</p> <p>FIRST TAKE POINT 330' FNL 661' FEL SECTION 19 NAD 83, SPCS NM EAST Y:471886.27' / X:607172.12' LAT:32.29710907N / LON:104.1202657W NAD 27, SPCS NM EAST Y:471827.20' / X:565989.55' LAT:32.29698887N / LON:104.1197692W</p> <p>LAST TAKE POINT/BOTTOM HOLE LOCATION 330' FSL 662' FEL SECTION 19 NAD 83, SPCS NM EAST Y:467201.01' / X:607181.06' LAT:32.2842299N / LON:104.1202669W NAD 27, SPCS NM EAST Y:467142.06' / X:565998.38' LAT:32.28410962N / LON:104.1197708W</p> <p>CORNER COORDINATES NAD 83, SPCS NM EAST A - Y: 472208.49' / X: 605187.51' B - Y: 47218.86' / X: 607832.81' C - Y: 466867.47' / X: 607843.83' D - Y: 466881.59' / X: 605195.28'</p> <p>CORNER COORDINATES NAD 27, SPCS NM EAST A - Y: 472149.44' / X: 564004.98' B - Y: 472159.78' / X: 566650.24' C - Y: 466808.52' / X: 566661.13' D - Y: 466822.67' / X: 564012.63'</p>		<p>¹⁷ OPERATOR CERTIFICATION I hereby certify that the information contained herein is true and complete to the best of my knowledge and belief, and that this organization either owns a working interest or unleased mineral interest in the land including the proposed bottom hole location or has a right to drill this well at this location pursuant to a contract with an owner of such a mineral or working interest, or to a voluntary pooling agreement or a compulsory pooling order heretofore entered by the division.</p> <p><i>Jennifer Van Curen</i> 2/14/18 Signature Date</p> <p>Jennifer Van Curen Printed Name</p> <p>E-mail Address</p> <p>¹⁸ SURVEYOR CERTIFICATION I hereby certify that the well location shown on this plat was plotted from field notes of actual surveys made by me or under my supervision, and that the same is true and correct to the best of my belief.</p> <p>FEBRUARY 14, 2018 Date of Survey</p> <p>Signature and Seal of Professional Surveyor <i>Lloyd P. Short</i></p> <p>Certificate Number LLOYD P. SHORT 21653</p>	
---	--	--	--

Ref

2-22-18

LOCATION VERIFICATION MAP ^{NM} OIL CONSERVATION ARTESIA DISTRICT

FEB 20 2018



SEC. 18 TWP. 23-S RGE. 28-E
SURVEY: N.M.P.M.
COUNTY: EDDY
DESCRIPTION: 665' FSL & 1653' FEL
ELEVATION: 3066'
OPERATOR: MARATHON OIL PERMIAN LLC
LEASE: MARINER FEE 23-28-19
U.S.G.S. TOPOGRAPHIC MAP: LOVING, N.M.

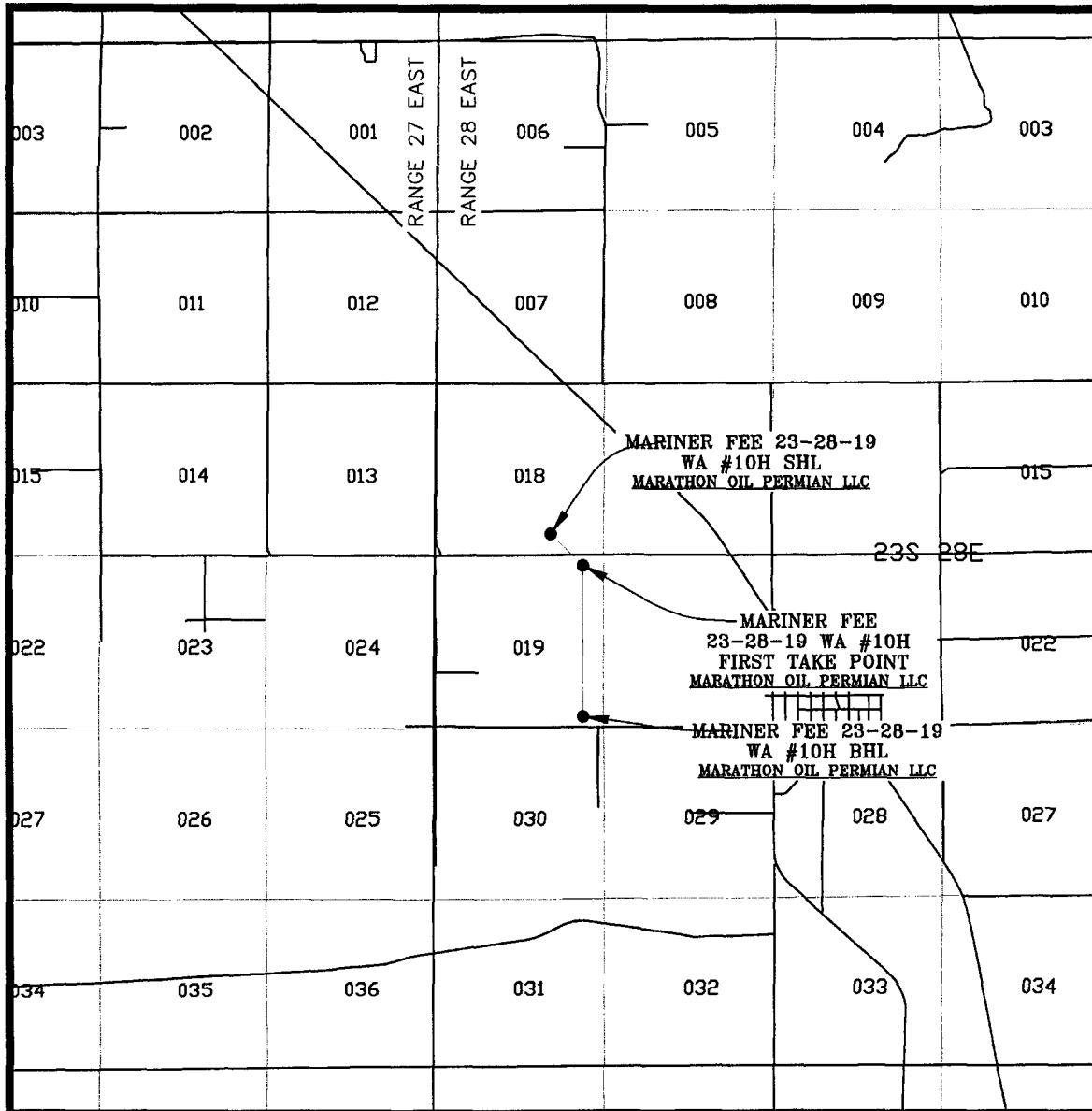
SCALE: 1" = 2000'
CONTOUR INTERVAL = 5'

PREPARED BY:
R-SQUARED GLOBAL, LLC
1309 LOUISVILLE AVENUE, MONROE, LA 71201
318-323-6900 OFFICE
JOB No. R3707_007

VICINITY MAP

FEB 20 2018

RECEIVED



SEC. 18 TWP. 23-S RGE. 28-E
SURVEY: N.M.P.M.
COUNTY: EDDY
DESCRIPTION: 665' FSL & 1653' FEL
ELEVATION: 3066'
OPERATOR: MARATHON OIL PERMIAN LLC
LEASE: MARINER FEE 23-28-19
U.S.G.S. TOPOGRAPHIC MAP: LOVING, N.M.

SCALE: 1" = 1 MILE

PREPARED BY:
R-SQUARED GLOBAL, LLC
1309 LOUISVILLE AVENUE, MONROE, LA 71201
318-323-6800 OFFICE
JOB No. R3797_007