

District I  
1625 N. French Dr., Hobbs, NM 88240  
Phone: (575) 393-6161 Fax: (575) 393-0720  
District II  
811 S. First St., Artesia, NM 88210  
Phone: (575) 748-1283 Fax: (575) 748-9720  
District III  
1000 Rio Brazos Road, Aztec, NM 87410  
Phone: (505) 334-6178 Fax: (505) 334-6170  
District IV  
1220 S. St. Francis Dr., Santa Fe, NM 87505  
Phone: (505) 476-3460 Fax: (505) 476-3462

State of New Mexico  
Energy, Minerals & Natural Resources Department  
OIL CONSERVATION DIVISION  
1220 South St. Francis Dr.  
Santa Fe, NM 87505

NM OIL CONSERVATION Form C-102  
Revised August 1, 2011  
Submit one copy to appropriate District Office

RECEIVED ☐ AMENDED REPORT

WELL LOCATION AND ACREAGE DEDICATION PLAT

<sup>1</sup> API Number <b>30-015-44714</b>	<sup>2</sup> Pool Code <b>98273</b>	<sup>3</sup> Pool Name <b>WILDCAT BONE SPRING WC-015-604-2630-524A</b>
<sup>4</sup> Property Code <b>320803</b>	<sup>5</sup> Property Name <b>LINDALE 24/25 H3AH FEDERAL</b>	<sup>6</sup> Well Number <b>1H</b>
<sup>7</sup> GRID NO. <b>14744</b>	<sup>8</sup> Operator Name <b>MEWBOURNE OIL COMPANY</b>	<sup>9</sup> Elevation <b>3182'</b>

<sup>10</sup> Surface Location

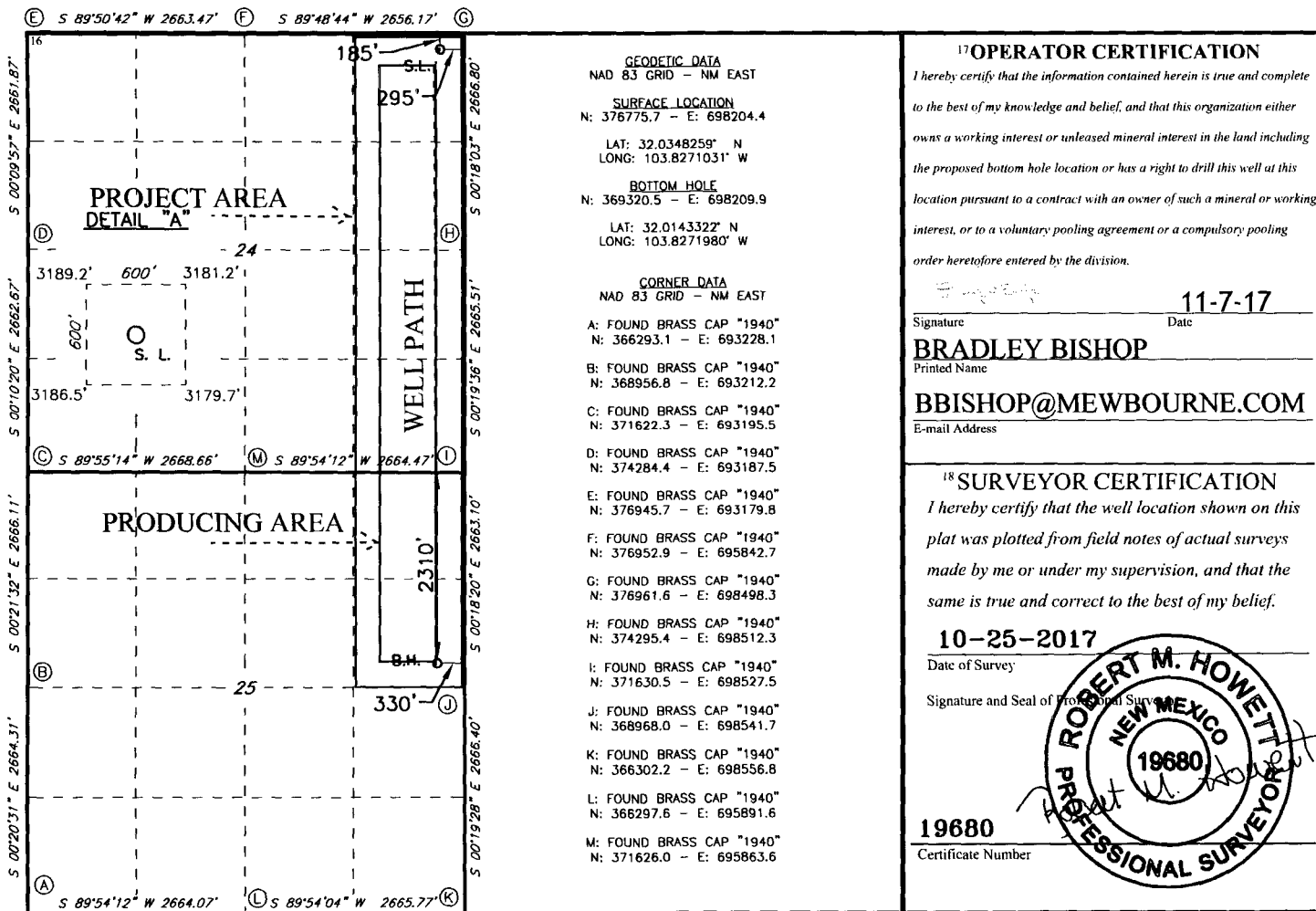
UL or lot no.	Section	Township	Range	Lot Idn	Feet from the	North/South line	Feet From the	East/West line	County
<b>A</b>	<b>24</b>	<b>26S</b>	<b>30E</b>		<b>185</b>	<b>NORTH</b>	<b>295</b>	<b>EAST</b>	<b>EDDY</b>

<sup>11</sup> Bottom Hole Location If Different From Surface

UL or lot no.	Section	Township	Range	Lot Idn	Feet from the	North/South line	Feet From the	East/West line	County
<b>H</b>	<b>25</b>	<b>26S</b>	<b>30E</b>		<b>2310</b>	<b>NORTH</b>	<b>330</b>	<b>EAST</b>	<b>EDDY</b>

<sup>12</sup> Dedicated Acres <b>200</b>	<sup>13</sup> Joint or Infill <b>240</b>	<sup>14</sup> Consolidation Code	<sup>15</sup> Order No.
---	---	----------------------------------	-------------------------

No allowable will be assigned to this completion until all interest have been consolidated or a non-standard unit has been approved by the division.



Job No.: LS1710703

RW 2-23-18

APD ID: 10400024024

Submission Date: 11/17/2017

Highlighted data  
reflects the most  
recent changes

Operator Name: MEWBOURNE OIL COMPANY

Well Name: LINDALE 24/25 H3AH FEDERAL

Well Number: 1H

[Show Final Text](#)

Well Type: OIL WELL

Well Work Type: Drill

## Section 1 - Geologic Formations

Formation ID	Formation Name	Elevation	True Vertical Depth	Measured Depth	Lithologies	Mineral Resources	Producing Formation
1	UNKNOWN	3182	27	27		NONE	No
2	RUSTLER	2208	975	975	DOLOMITE, ANHYDRITE	USEABLE WATER	No
3	TOP SALT	1733	1450	1450	SALT	NONE	No
4	BASE OF SALT	-468	3650	3650	SALT	NONE	No
5	LAMAR	-667	3850	3850	LIMESTONE	NATURAL GAS, OIL	No
6	BONE SPRING	-4442	7625	7625	LIMESTONE, SHALE	NATURAL GAS, OIL	No
7	BONE SPRING 1ST	-5417	8600	8600	SANDSTONE	NATURAL GAS, OIL	No
8	BONE SPRING 2ND	-6067	9250	9250	SANDSTONE	NATURAL GAS, OIL	No
9	BONE SPRING 3RD	-7317	10500	10500	SANDSTONE	NATURAL GAS, OIL	Yes

## Section 2 - Blowout Prevention

Pressure Rating (PSI): 5M

Rating Depth: 17600

Equipment: Annular, Pipe Ram, Blind Ram

Requesting Variance? YES

**Variance request:** A variance is requested for use of a flexible choke line from the BOP to Choke Manifold. Anchors not required by manufacturer A multi-bowl wellhead is being used. See attached schematic

**Testing Procedure:** BOP/BOPE will be tested by an independent service company to 250 psi low and the high pressure indicated above per Onshore Order 2 requirements. The System may be upgraded to a higher pressure but still tested to the working pressure listed in the table above. If the system is upgraded all the components installed will be functional and tested. Pipe rams will be operationally checked each 24 hour period. Blind rams will be operationally checked on each trip out of the hole. These checks will be noted on the daily tour sheets. Other accessories to the BOP equipment will include a Kelly cock and floor safety valve (inside BOP) and choke lines and choke manifold.

Choke Diagram Attachment:

Lindale\_24\_25\_H3AH\_Fed\_1H\_5M\_BOPE\_Choke\_Diagram\_20171116162102.pdf