

District I  
1625 N. French Dr., Hobbs, NM 88240  
District II  
811 S. First St., Artesia, NM 88210  
District III  
1000 Rio Brazos Road, Aztec, NM 87410  
District IV  
1220 S. St. Francis Dr., Santa Fe, NM 87505

State of New Mexico  
Energy, Minerals and Natural Resources Department  
Oil Conservation Division  
1220 South St. Francis Dr.  
Santa Fe, NM 87505

Submit Original  
to Appropriate  
District Office

OIL CONSERVATION  
ARTESIA DISTRICT

MAR 05 2016

**GAS CAPTURE PLAN**

Date: 9-6-2017

RECEIVED

☒ Original

Operator & OGRID No.: OXY USA INC. - 16696

☐ Amended - Reason for Amendment: \_\_\_\_\_

This Gas Capture Plan outlines actions to be taken by the Operator to reduce well/production facility flaring/venting for new completion (new drill, recomple to new zone, re-frac) activity.

*Note: Form C-129 must be submitted and approved prior to exceeding 60 days allowed by Rule (Subsection A of 19.15.18.12 NMAC).*

**Well(s)/Production Facility – Name of facility**

The well(s) that will be located at the production facility are shown in the table below.

Well Name	API	Well Location (ULSTR)	Footages	Expected MCF/D	Flared or Vented	Comments
Pecos Valley CC 7 Federal Com #25H	Pending	Unit L Sec 8 T24S R29E	2163 FSL 560 FWL	3,200	0	
Pecos Valley CC 7 Federal Com #26H <u>30-015-44799</u>	Pending	Unit L Sec 8 T24S R29E	2106 FSL 577 FWL	3,200	0	
Pecos Valley CC 9-8 Federal Com #23H	Pending	Unit L Sec 8 T24S R29E	2134 FSL 569 FWL	3,200	0	

**Gathering System and Pipeline Notification**

Well(s) will be connected to a production facility after flowback operations are complete, if gas transporter system is in place. The gas produced from production facility is dedicated to Enterprise Field Services, LLC ("Enterprise") and will be connected to Enterprise low/high pressure gathering system located in Eddy County, New Mexico. It will require 2,500' of pipeline to connect the facility to low/high pressure gathering system. OXY USA INC. ("OXY") provides (periodically) to Enterprise a drilling, completion and estimated first production date for wells that are scheduled to be drilled in the foreseeable future. In addition, OXY and Enterprise have periodic conference calls to discuss changes to drilling and completion schedules. Gas from these wells will be processed at OXY USA WTP LP Processing Plant located in Sec. 23, Twn. 21S, Rng 23E, Eddy County, New Mexico. The actual flow of the gas will be based on compression operating parameters and gathering system pressures.

**Flowback Strategy**

After the fracture treatment/completion operations, well(s) will be produced to temporary production tanks and gas will be flared or vented. During flowback, the fluids and sand content will be monitored. When the produced fluids contain minimal sand, the wells will be turned to production facilities. Gas sales should start as soon as the wells start flowing through the production facilities, unless there are operational issues on Enterprise system at that time. Based on current information, it is OXY's belief the system can take this gas upon completion of the well(s).

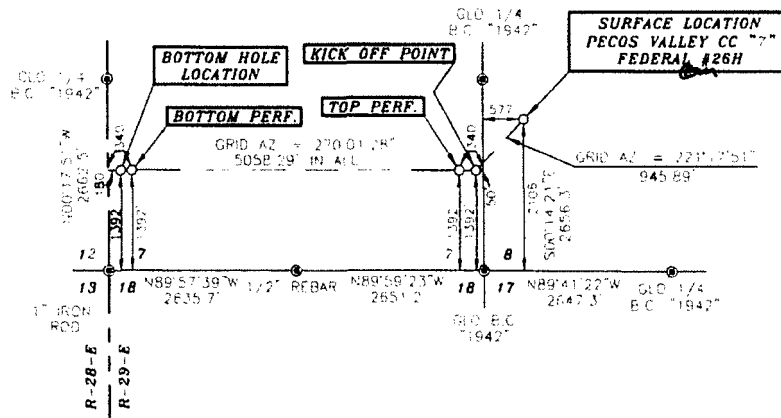
Safety requirements during cleanout operations from the use of underbalanced air cleanout systems may necessitate that sand and non-pipeline quality gas be vented and/or flared rather than sold on a temporary basis.

**Alternatives to Reduce Flaring**

Below are alternatives considered from a conceptual standpoint to reduce the amount of gas flared.

- Power Generation – On lease
  - Only a portion of gas is consumed operating the generator, remainder of gas will be flared
- Compressed Natural Gas – On lease
  - Gas flared would be minimal, but might be uneconomical to operate when gas volume declines
- NGL Removal – On lease
  - Plants are expensive, residue gas is still flared, and uneconomical to operate when gas volume declines

SECTIONS 8 & 7, TOWNSHIP 24 SOUTH, RANGE 29 EAST, N.M.P.M.,  
EDDY COUNTY NEW MEXICO



DRIVING DIRECTIONS  
FROM THE INTERSECTION OF U.S. HWY  
#285 AND BLACK RIVER VILLAGE ROAD IN  
MALAGA GO EAST ON COUNTY ROAD #720  
FOR 1.3 MILES. TURN RIGHT ON COUNTY  
ROAD #745 (MCDONALD ROAD) AND GO  
SOUTH FOR 0.8 MILES. CONTINUE  
SOUTHEAST/EAST FOR 2.3 MILES. TURN  
LEFT ON COUNTY ROAD #728 (DOG TOWN  
ROAD) AND GO NORTHEASTERLY FOR 1.8  
MILES. TURN LEFT AND GO NORTHWEST FOR  
1.1 MILES. TURN RIGHT ON PROPOSED  
ROAD AND GO NORTHEAST FOR 29.9 FEET  
TO LOCATION.



**SURVEYORS CERTIFICATE**

I, TERRY J. ASEL, NEW MEXICO PROFESSIONAL SURVEYOR  
NO. 15079, DO HEREBY CERTIFY THAT I CONDUCTED AND AM  
RESPONSIBLE FOR THIS SURVEY, THAT THIS SURVEY IS  
TRUE AND CORRECT TO THE BEST OF MY KNOWLEDGE AND  
BELIEF, AND MEETS THE "MINIMUM STANDARDS FOR  
SURVEYING IN NEW MEXICO" AS ADOPTED BY THE NEW  
MEXICO STATE BOARD OF REGISTRATION FOR  
PROFESSIONAL ENGINEERS AND SURVEYORS

*Terry J. Asel* 8/9/2017  
Terry J. Asel N.M. R.P.L.S. No. 15079

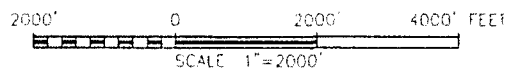
Asel Surveying



P.O. BOX 393 - 310 W. TAYLOR  
HOBBS, NEW MEXICO - 575-393-9146

**LEGEND**

● - DENOTES FOUND MONUMENT AS NOTED



**OXY USA INC.**

PECOS VALLEY CC #26H  
LOCATED AT 2106' FSL & 57' FWL IN  
SECTION 8, TOWNSHIP 24 SOUTH, RANGE 29  
EAST, N.M.P.M., EDDY COUNTY, NEW MEXICO

Survey Date: 06/06/17	Sheet 1 of 1 Sheets
W.O. Number: 170606WL-b (Rev. A)	Drawn By: KA Rev: A
Date: 08/08/17	170606WL-b Scale: 1"=2000'

Basis of Bearings - GPS Geodetic Measurements  
NAD 83 Zone 13N North American Datum 1983