

State of New Mexico
Energy, Minerals & Natural Resources Department
OIL CONSERVATION DIVISION
1220 South St. Francis Dr.
Santa Fe, New Mexico 87505

Form C-102
Revised August 1, 2011
Submit one copy to appropriate
District Office

ARTESIA DISTRICT
FEB 15 2018

☐ AMENDED REPORT

DAMENDEO REPORT

RECEIVED

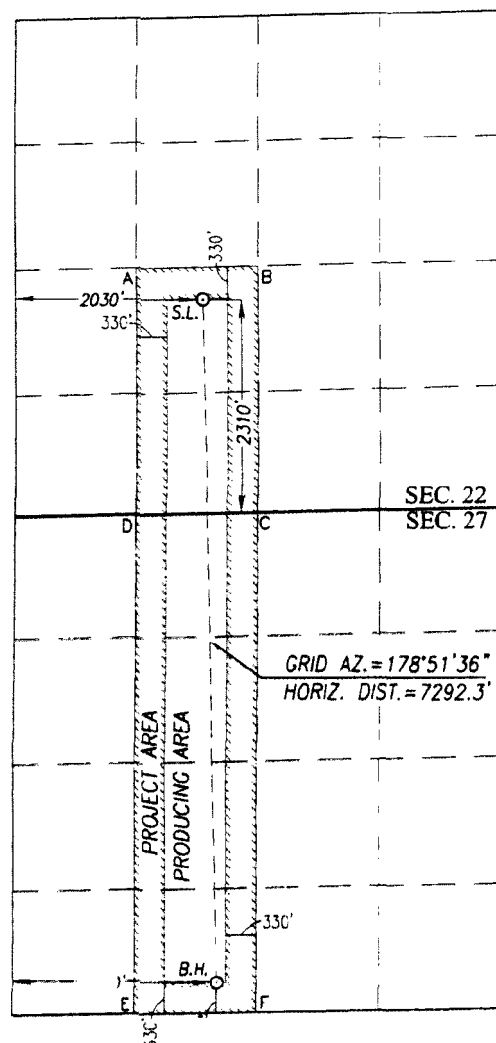
API Number 30-015-44063	Pool Code 98220	Pool Name Purple Sage; Wolfcamp
Property Code 314249	Property Name FOREHAND RANCH 22 STATE	Well Number 9H
OGRID No. 249099	Operator Name CAZA OPERATING, LLC	Elevation 3149'

Surface Location									
UL or lot No.	Section	Township	Range	Lot Idn	Feet from the	North/South line	Feet from the	East/West line	County
K	22	23-S	27-E		2310	SOUTH	2030	WEST	EDDY

U/I. or lot No.	Section	Township	Range	Lot Idn	Feet from the	North/South line	Feet from the	East/West line	County
N	27	23-S	27-E		338	SOUTH	887	WEST	EDDY

Dedicated Acres	Joint or Infill	Consolidation Code	Order No.
480			

SCALE: 1"=2000'



GEODETIC COORDINATES	GEODETIC COORDINATES
NAD 83 NME	NAD 27 NME
SURFACE LOCATION	SURFACE LOCATION
Y= 469112.5 N	Y= 469053.7 N
X= 588742.9 E	X= 547560.6 E
LAT.=32.289571° N	LAT.=32.289451° N
LONG.=104.179923° W	LONG.=104.179424° W

I hereby certify that the information herein is true and complete to the best of my knowledge and belief, and that this organization either owns a working interest or unleased mineral interest in the land including the proposed bottom hole location or has a right to drill this well at this location pursuant to a contract with an owner of such mineral or working interest, or to a voluntary pooling agreement or a compulsory pooling order heretofore entered by the division.

[illegible]

Steve Morris
Printed Name

steve.morris@mojoenergy.com
E-mail Address

I hereby certify that the well location shown on this plat was plotted from field notes of actual surveys made by me or under my supervision, and that the same is true and correct to the best of my belief.

FEBRUARY 6, 2017

Date of Survey
Signature & Seal of Professional Surveyor:

Certificate Number Ronald E. Edson 32216/2017
 Gary C. Edson 12641
 Ronald J. Edson 3239
 ACK REL W.O.: 1511055 JWSC W.O.: 17.11.0071