

UNITED STATES  
DEPARTMENT OF THE INTERIOR  
BUREAU OF LAND MANAGEMENT

OCD-ARTESIA

FORM APPROVED  
OMB NO. 1004-0137  
Expires: January 31, 2018**SUNDRY NOTICES AND REPORTS ON WELLS**  
*Do not use this form for proposals to drill or to re-enter an abandoned well. Use form 3160-3 (APD) for such proposals.*5. Lease Serial No.  
NMNM112273

6. If Indian, Allottee or Tribe Name

7. If Unit or CA/Agreement, Name and/or No.

**SUBMIT IN TRIPLICATE - Other instructions on page 2**

1. Type of Well

☐ Oil Well ☐ Gas Well ☒ Other: INJECTION

8. Well Name and No.

COLLINSOSCOPY FEDERAL 1

2. Name of Operator

OWL SWD OPERATING, LLC

Contact: JAY FRYAR

E-Mail: jfryar@oilfieldwaterlogistics.com

9. API Well No.

30-015-33758

3a. Address

8214 WESTCHESTER DRIVE SUITE 850  
DALLAS, TX 75255

3b. Phone No. (include area code)

Ph: 432-269-3735

10. Field and Pool or Exploratory Area  
BURTON FLAT; DELAWARE

4. Location of Well (Footage, Sec., T., R., M., or Survey Description)

Sec 7 T20S R30E Mer NMP SWSW 1095FSL 430FWL

11. County or Parish, State

EDDY COUNTY, NM

**12. CHECK THE APPROPRIATE BOX(ES) TO INDICATE NATURE OF NOTICE, REPORT, OR OTHER DATA**

## TYPE OF SUBMISSION

## TYPE OF ACTION

☒ Notice of Intent  
☒ Subsequent Report☐ Final Abandonment Notice☐ Acidize☐ Alter Casing☐ Casing Repair☐ Change Plans☐ Convert to Injection☐ Deepen☐ Hydraulic Fracturing☐ New Construction☒ Plug and Abandon☐ Plug Back☐ Production (Start/Resume)☐ Reclamation☐ Recomplete☐ Temporarily Abandon☐ Water Disposal☐ Water Shut-Off☐ Well Integrity☐ Other

13. Describe Proposed or Completed Operation: Clearly state all pertinent details, including estimated starting date of any proposed work and approximate duration thereof. If the proposal is to deepen directionally or recomple horizontally, give subsurface locations and measured and true vertical depths of all pertinent markers and zones. Attach the Bond under which the work will be performed or provide the Bond No. on file with BLM/BIA. Required subsequent reports must be filed within 30 days following completion of the involved operations. If the operation results in a multiple completion or recompletion in a new interval, a Form 3160-4 must be filed once testing has been completed. Final Abandonment Notices must be filed only after all requirements, including reclamation, have been completed and the operator has determined that the site is ready for final inspection.

PROPOSE TO PLUG AND ABANDON; Prior to Moving In:

Locate &amp; check location. Notify NMOCD/BLM prior to beginning work.

Safety Meeting Prior to ALL Operations!

MIRU workover unit, reverse pits, power swivel &amp; associated equipment. Unload &amp; tally rental workstring.

?

Cap Wireline (wireline work) (575) 964-8300 Hobbs

Jackie Wilson (575) 390-3350 Cell

?

PU &amp; GIH w/catcher for Peake RBP on 2-7/8? 6.5# J55 PH-6 tbg. Catch &amp; release RBP. POH:

?

Peak Completions (RBP) (432) 624-4155 Midland

R-111-0 Peake

Carlsbad Controlled Water Basin

APPROVED

SUBJECT TO LIKE  
APPROVAL BY STATESEE ATTACHED FOR  
CONDITIONS OF APPROVAL

WITNESS

Accepted for record Carlsbad Controlled Water Basin  
NMOCD 4/3/15/10

14. I hereby certify that the foregoing is true and correct.

Electronic Submission #403601 verified by the BLM Well Information System  
For OWL SWD OPERATING, LLC, sent to the Carlsbad

Name (Printed/Typed) BEN STONE

Title AGENT / CONSULTANT

OIL CONSERVATION  
ARTESIA DISTRICT

MAR 12 2018

Signature (Electronic Submission)

Date 02/06/2018

**THIS SPACE FOR FEDERAL OR STATE OFFICE USE**

Approved By

Title

Date

Conditions of approval, if any, are attached. Approval of this notice does not warrant or certify that the applicant holds legal or equitable title to those rights in the subject lease which would entitle the applicant to conduct operations thereon.

Office

BUREAU OF LAND MANAGEMENT  
CARLSBAD FIELD OFFICE

Title 18 U.S.C. Section 1001 and Title 43 U.S.C. Section 1212, make it a crime for any person knowingly and willfully to make to any department or agency of the United States any false, fictitious or fraudulent statements or representations as to any matter within its jurisdiction.

(Instructions on page 2)

\*\* OPERATOR-SUBMITTED \*\* OPERATOR-SUBMITTED \*\* OPERATOR-SUBMITTED \*\*

**Additional data for EC transaction #403601 that would not fit on the form**

**32. Additional remarks, continued**

Nathan Fitzhugh (432) 488-7250 Cell

?

GIH w/4-3/4" BIT & 6 x 3-1/2" drill collars on work string. Drill cmt & plugs @ 3,700'; 6,120' ? 6,150'; 7,765' ? 7,800'; 9,765' ? 9,800'; 10,340' ? 10,375'; 10,765' ? 10,800'; 11,230' ? 11,265'. Clean out to CIBP @ 11,800'. Circ hole w/mud-laden fluid (Get mud hopper & add gel to mud up to ~30 sec/qt viscosity.) POH.

?

GIH open-ended to PBTD.

?

*Follow COA procedure.*  
~~Set cement plugs @ 11,800' (70 sx, 600'); 11,020' (90 sx, 800') - tag; 9,700' (25 sx, ~250'); 6,300' (60 sx, ~675') - tag; 4,870' (25 sx, 250') - tag; 2,510' (25 sx, 250') - tag; 2,135' (40 sx, 400') & 365' (40 sx, 365') - circ to surface. Use Class H cement below 7,500' & Class C cement above 7,500'. Wait & tag each plug. Wait 8 hrs before tagging with Class H & 4 hrs with Class C cement.~~

?

Cut off casings 3-4' below ground level. Weld on dry hole marker with appropriate well information.

?

Fill in around marker. Release rig & equipment. Consultant must ensure all rental equipment is released & picked up from location. Clean up location & haul off any junk.

?

Notify BLM that well is P&A?d if no witness.

## **OWL COLLINSOSCOPY FEDERAL #1 SWD**

### **Burton Flat (Delaware) Field**

**API# 30-015-33758**

**1095' FSL & 430' FWL**

**Sec 7, T-20S, R-30E**

**Eddy County, NM**

#### **Directions to Location:**

From intersection of Hwy 62/180 & 285 in Carlsbad NM. Go 14.9 miles east to Burton Flats road (238). Turn left (north) go 1.2 miles to 239 turn right go 1.2 miles. Turn left go .7 miles on lease road. Turn right go 1.2 miles to cattle guard. Turn right ( Northeast ) go .2 miles to location

### **OBJECT: Plug & Abandon.**

**Elevation: 3,310' GR**

**Primary Casing: 5-1/2" 17# M-95-110 LTC @ 12.400'**  
**Capacity: .0232 bbls/ft.**  
**Drift ID: 4.767"**

## **PLUG & ABANDON Procedure:**

### **Prior to Moving In:**

1. Locate & check location. Notify NMOCD/BLM prior to beginning work.

### **Move In**

2. MIRU workover unit, reverse pits, power swivel & associated equipment. Unload & tally rental workstring.

|                                     |                             |
|-------------------------------------|-----------------------------|
| <b>Cap Wireline (wireline work)</b> | <b>(575) 964-8300 Hobbs</b> |
| <b>Jackie Wilson</b>                | <b>(575) 390-3350 Cell</b>  |

3. PU & GIH w/catcher for Peake RBP on 2-7/8" 6.5# J55 PH-6 tbg. Catch & release RBP. POH.

|                               |                               |
|-------------------------------|-------------------------------|
| <b>Peak Completions (RBP)</b> | <b>(432) 624-4155 Midland</b> |
| <b>Nathan Fitzhugh</b>        | <b>(432) 488-7250 Cell</b>    |

4. GIH w/4-3/4" BIT & 6 x 3-1/2" drill collars on work string. Drill cmt & plugs @ 3,700'; 6,120' – 6,150'; 7,765' – 7,800'; 9,765' – 9,800'; 10,340' – 10,375'; 10,765' – 10,800'; 11,230' – 11,265'. Clean out to CIBP @ 11,800'. Circ hole w/mud-laden fluid (Get mud hopper & add gel to mud up to ~30 sec/qt viscosity.) POH.

5. GIH open-ended to PBTD.

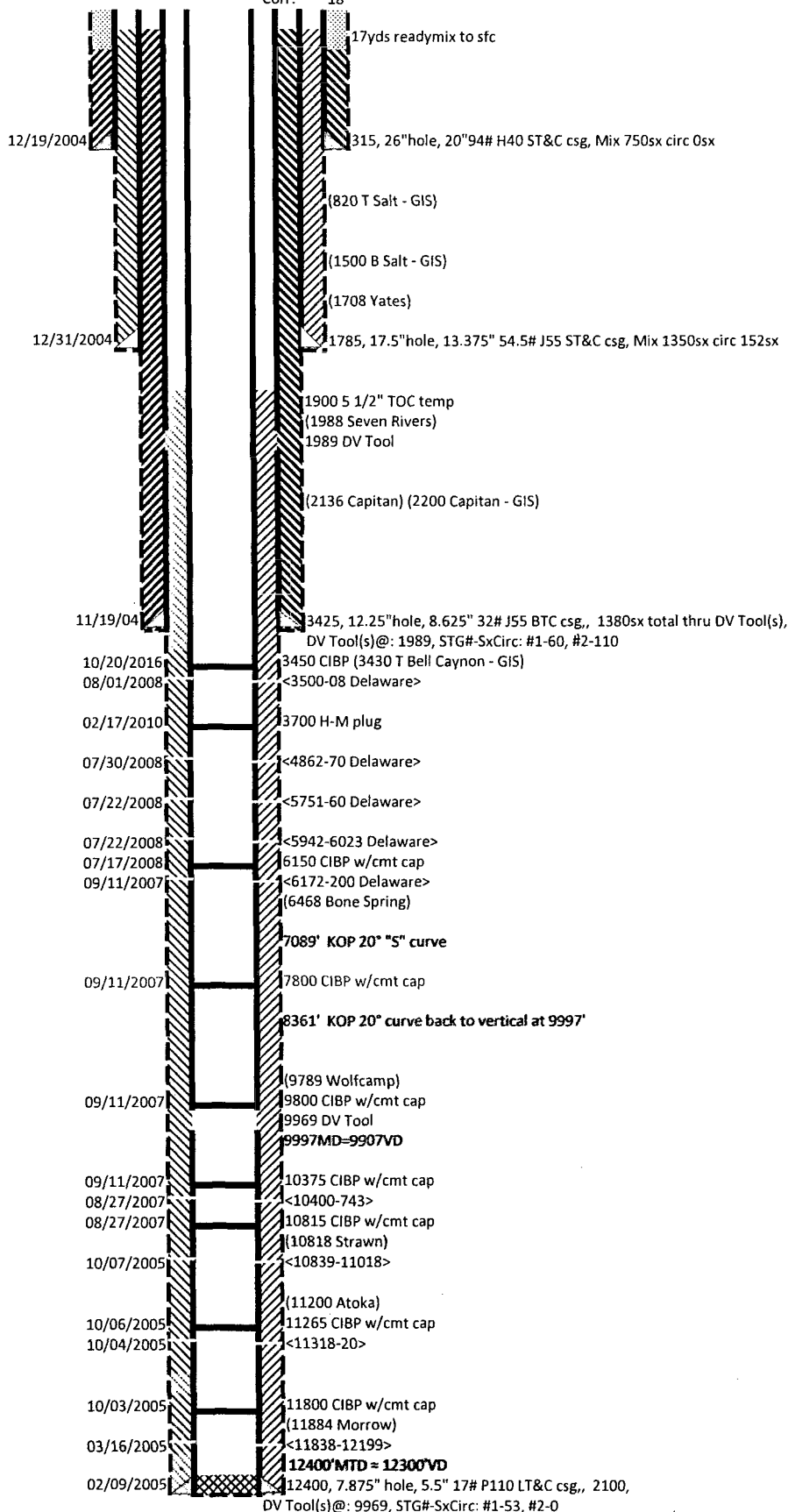
6. Set cement plugs @ 11,800' (70 sx, 600') - tag; 9,700' (25 sx, ~250') - tag; 6,300' (60 sx, ~675') - tag; 4,870' (25 sx, 250') - tag; 3,510' (25 sx, 250') - tag; 2,135' (40 sx, 400'); & 365' (40 sx, 365') – circ to surface. Use Class H cement below 7,500' & Class C cement above 7,500'. Wait & tag each plug. Wait 8 hrs before tagging with Class H & 4 hrs with Class C cement.

7. Cut off casings 3-4' below ground level. Weld on dry hole marker with appropriate well information.
8. Fill in around marker. Release rig & equipment. Consultant must ensure all rental equipment is released & picked up from location. Clean up location & haul off any junk.
9. Notify BLM that well is P&A'd if no witness.

*Follow COA procedure*

Well: COLLINSOSCOPY FEDERAL-1  
API: 3001533758  
@ Srfce: T20S-R30E,07.1095s430w  
@ M TD: T20S-R30E,07.1095s430w  
Estate: F\F\F

KB: 3328  
GL: 3310  
 Corr: 18



## Conditions of Approval

**OWL SWD Operating, LLC**  
**Collinscopy - 01, API 3001533758**  
**T20S-R30E, Sec 07, 1095FSL & 430FWL**  
**February 12, 2018**

1. **Within 90 days of these conditions of approval for the processed Electronic Submission #403601 notice of intent begin wellbore operations or request an extension.**
2. **Operator is required to have the BLM approved NOI procedure with applicable conditions of approval on location during this workover operation.**
3. **Conditions of Approval reflect a procedure based on available documentation for this wellbore. The BLM workover witness and NOI approver may adjust operations so as not to hinder achievable abandonment requirements.**
4. Notify 575-361-2822 Eddy Co as work begins. If there is no response leave a voice mail with the API#, workover purpose, and a call back phone number.
5. Surface disturbance beyond the existing pad must have prior approval.
6. A closed loop system is required. The operator shall properly dispose of drilling/circulating contents at an authorized disposal site. Tanks are required for all operations, no excavated pits.
7. Functional H<sub>2</sub>S monitoring equipment shall be on location.
8. Use Blow Out Prevention Equipment 3000 (3M). All BOPE and workover procedures shall establish fail safe well control. Ram(s) for the work string(s) used is required equipment. Manual BOP closure system including a blind ram and pipe ram(s) designed to close on all (hand wheels or automatic locking devices) equipment installed regardless of BOP design. Function test the installed BOPE to 500psig when well conditions allow. Related equipment, (choke manifolds, kill trucks, gas vent or flare lines, etc.) employed when needed for reasonable well control requirements.
9. Created operation waste (i.e. trash, salts, chemicals, sewage, gray water, etc.) shall be safely contained and disposed of properly at a waste disposal facility. No waste material or fluid shall be disposed of on the well location or surrounding area. Porto-johns and trash containers will be on-location during any other crew-intensive operations.
10. The BLM PET is to run tbg tally and agree to cement volumes and placement. Sample each plug for cement curing time and tag and/or pressure test as requested by BLM PET witness.
11. **Cementing procedure is subject to the next four numbered paragraphs.**
12. Mix cement plugs to cover a minimum of 100ft plus 10ft for every 1,000ft to the bottom of the plug, rounding the number of necessary sacks up to the nearest 5 sacks. Never use less than 25sx. Examples: A cement plug set at 8000 in 7" casing would require a min of 35sx. A 25sx plug in 5 ½" casing should cover 250ft, which may exceed 100ft plus 10ft per 1000ft.
13. Below 7500ft Class "H" and above 7500ft Class "C" neat cement plugs(s) will be necessary. Isolation plugs of Class "C" neat cement to be mixed 14.8#/gal, 1.32 ft<sup>3</sup>/sx, 6.3gal/sx water and Class "H" neat cement to be mixed 16.4#/gal, 1.06ft<sup>3</sup>/sx, 4.3gal/sx water.

14. A minimum WOC time of 4 hours(C) & 8 hours(H) is recommended for plugs that require a tag or pressure test.
15. Minimum requirement for mud placed between plugs is 25 sacks of saltwater gel per 100 barrels in 9 lb/gal brine.
16. **Drill cmt & plugs to a tag on the 11800' CIBP.**
17. **Set a min 30sx balanced "H" cmt plug on the CIBP set above top perf 11838'. WOC, and tag the plug with tbg at 11550' or above covering the 11884' Morrow formation top.**
18. **Set a CIBP within 100' of the top Atoka perf of 11318'. Set a min 30sx balanced "H" cmt plug from CIBP within 100' of 11318'. WOC, and tag the plug with tbg at 11090' or above, and cover the 11200' Atoka formation top.**
19. **Set a CIBP within 100' of the top Strawn perf of 10839'. Set a min 30sx balanced "H" cmt plug from CIBP within 100' of 10839'. WOC, and tag the plug with tbg at 10590' or above, and cover the 10818' Strawn formation top.**
20. **Set a CIBP within 100' of the top Wolfcamp perf of 10400'. Set a min 25sx balanced "H" cmt plug from CIBP within 100' of 10400'. WOC, and tag the plug with tbg at 10200' or above.**
21. **Set a min 25sx balanced "H" cmt plug from 10050'. WOC, and tag the plug with tbg at 9860' or above covering the DV Tool at 9969'.**
22. **Set a min 25sx balanced "H" cmt plug from 9850'. WOC, and tag the plug with tbg at 9650' or above covering the Wolfcamp formation top at 9789'.**
23. **Set a min 25sx balanced "C" cmt plug from 6575'. WOC, and tag the plug with tbg at 6310' or above covering the Bone Spring formation top at 6468'.**
24. **Set a CIBP within 100' of the Delaware perf of 6172'. Dump Bail 35' cmt cap on the CIBP.**
25. **Set a CIBP within 100' of the Delaware perf of 5942'. Dump Bail 35' cmt cap on the CIBP.**
26. **Set a CIBP within 100' of the Delaware perf of 5751'. Dump Bail 35' cmt cap on the CIBP.**
27. **Set a CIBP within 100' of the Delaware perf of 4862'. Dump Bail 35' cmt cap on the CIBP.**
28. **Set a CIBP as close as possible to the top Delaware perf of 3500'.**
29. **Pressure test the casing to 500psig after a CIBP set above Delaware perf of 3500'.**
30. **Set a min 25sx balanced "C" cmt plug from CIBP set above the Delaware perf of 3500'. WOC, and tag the plug with tbg at 3250' or above covering the 8 5/8" csg shoe at 3425'.**
31. **The designated R-111-P Secretary Potash Area requires a solid cmt plug from 50ft or more below to 50ft or more above the Salt Formation in the drilled wellbore diameter.**
32. **Perforate at 1850'.**
33. **Set a Pkr. Open the 5 1/2" x 8 5/8" annular csg vent and establish circulation. Sqz w/260sx "C" cmt into the 5 1/2" x 8 5/8" annulus, displace to leave the cmt top at 750' in the 5 1/2" csg. Close the tbg valve behind displacement volume and hold the slurry in place.**
34. **WOC, tag the sqz plug w/tbg in the 5 1/2" csg at 750' covering the 13 3/8" csg shoe at 1785' and the Salt Formation.**

actions may be needed. When you feel the full BLM objectives have been met, submit a Final Abandonment Notice (FAN) Form 3160-5, stating that all reclamation requirements have been achieved and the location and/or access road is ready for a final abandonment inspection.

7. At this time a BLM specialist will again inspect the location and/or access road. If the native soils and contour have been restored, and the revegetation is successful, the FAN will be approved, releasing the operator of any further liability for the location and/or access road. If the location and/or access road have not achieved the objective, you will be notified as to additional work needed or additional time being needed to achieve the objective.

If there are any questions, please feel free to contact any of the following specialists:

Jim Amos  
Supervisory Environmental Protection Specialist  
575-234-5909, 575-361-2648 (Cell)

Robertson, Jeffery  
Natural Resource Specialist  
575-234-2230, 575-706-1920 (Cell)

Trishia Bad Bear  
Natural Resource Specialist  
575-393-3612, 575-390-2258 (Cell)

Vance Wolf  
Natural Resource Specialist  
575-234-5979

Jesse Bassett  
Natural Resource Specialist  
575-234-5913, 575-499-5114 (Cell)

Brooke Wilson  
Natural Resource Specialist  
575-234-6237

Paul Murphy  
Natural Resource Specialist  
575-234-5975, 575-885-9264 (Cell)

Arthur Arias  
Environmental Protection Specialist  
575-234-6230, 575-499-3378 (Cell)

Henryetta Price  
Environmental Protection Specialist  
575-234-5951, 575-706-2780 (Cell)

Shelly Tucker  
Environmental Protection Specialist  
575-234-5905, 575-361-0084 (Cell)



# Collinsoscopy Federal No.1

30-015-33758

1095' FSL & 430' FWL

Section 7-Twp 20S-Rng 30E

Eddy County, New Mexico

Owl SWD Operating, LLC

Current TA - Feb.2018

