

District I  
1625 N. French Dr., Hobbs, NM 88240  
Phone: (505) 393-6161 Fax: (505) 393-0720  
District II  
811 S. First St., Artesia, NM 88210  
Phone: (505) 748-1283 Fax: (505) 748-9220  
District III  
1000 Rio Brazos Road, Aztec, NM 87410  
Phone: (505) 334-6178 Fax: (505) 334-6170  
District IV  
1220 S. St. Francis Dr., Santa Fe, NM 87505  
Phone: (505) 476-3460 Fax: (505) 476-3462

State of New Mexico  
Energy, Minerals & Natural Resources Department  
OIL CONSERVATION DIVISION  
1220 South St. Francis Dr.  
Santa Fe, NM 87505

Form C-102  
Revised August 1, 2011  
Submit copy to appropriate  
District Office

NM OIL CONSERVATION  
ARTESIA DISTRICT

APR 02 2018  AMENDED REPORT  
As Drilled

WELL LOCATION AND ACREAGE DEDICATION PLAT

API Number 30-015-44497	Pool Code 13367	Well Name COTTON DRAW; BONE SPRING
Property Code 319619	Property Name PATTON MDP1 "17" FEDERAL	Well Number 4H
OGRID No. 16696	Operator Name OXY USA INC.	Elevation 3540.7'

Surface Location

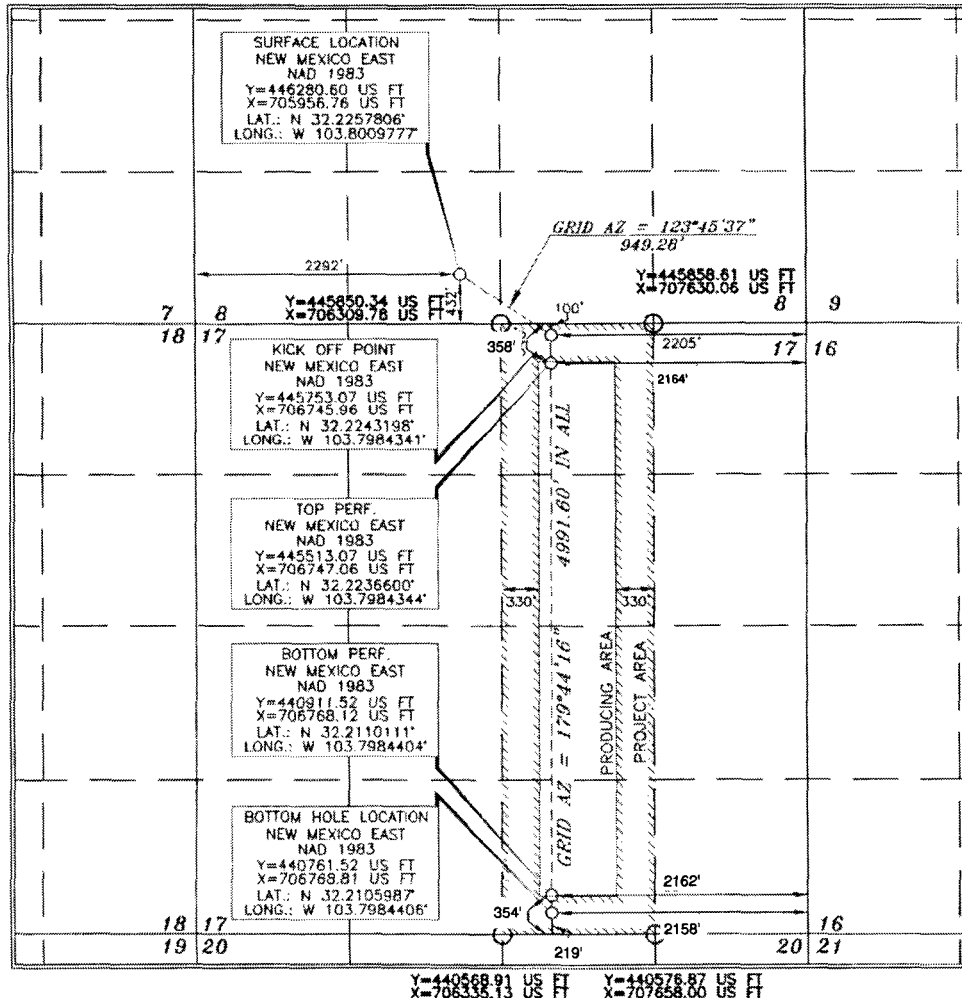
UL or lot no.	Section	Township	Range	Lot Idn	Feet from the	North/South line	Feet from the	East/West line	County
N	8	24 SOUTH	31 EAST, N.M.P.M.		432'	SOUTH	2292'	WEST	EDDY

Bottom Hole Location If Different From Surface

UL or lot no.	Section	Township	Range	Lot Idn	Feet from the	North/South line	Feet from the	East/West line	County
0	17	24 SOUTH	31 EAST, N.M.P.M.		219'	SOUTH	2158'	EAST	EDDY

Dedicated Acres 160	Joint or Infill Y	Consolidation Code	Order No. TP: 358 FNL 2164 FEL BP: 354 FSL 2162 FEL
------------------------	----------------------	--------------------	--

No allowable will be assigned to this completion until all interests have been consolidated or a non-standard unit has been approved by the division.



OPERATOR CERTIFICATION

I hereby certify that the information contained herein is true and complete to the best of my knowledge and belief, and that this organization either owns a working interest or unleased mineral interest in the land including the proposed bottom hole location or has a right to drill this well at this location pursuant to a contract with an owner of such a mineral or working interest, or to a voluntary pooling agreement or a compulsory pooling order heretofore entered by the division.

Signature: Sarah Mitchell  
Date: 3/28/17  
Printed Name: sarah\_mitchell@oxy.com  
E-mail Address

SURVEYOR CERTIFICATION

I hereby certify that the well location shown on this plat was plotted from field notes of actual surveys made by me or under my supervision, and that the same is true and correct to the best of my belief.

Date of Survey: OCTOBER 7, 2016  
Signature and Seal of Professional Land Surveyor: Tony J. Neal  
Certificate Number: 15079

WO# 161007WL-C-XY (KA)