

DISTRICT I

1025 N. French Dr., Hobbs, NM 88240
Phone (505) 393-6181 Fax: (505) 393-0720

DISTRICT II

811 S. First St., Artesia, NM 88210
Phone (505) 748-1283 Fax: (505) 748-9720

DISTRICT III

1000 Rio Brazos Rd., Aztec, NM 87410
Phone (505) 334-6178 Fax: (505) 334-8170

DISTRICT IV

1226 S. St. Francis Dr., Santa Fe, NM 87505
Phone (505) 476-3460 Fax: (505) 476-3462

State of New Mexico
Energy, Minerals and Natural Resources Department

NM OIL CONSERVATION
ARTESIA DISTRICT

Form C-102

Revised August 1, 2011

Submit one copy to appropriate
District Office

OIL CONSERVATION DIVISION

1226 South St. Francis Dr.
Santa Fe, New Mexico 87505

APR 26 2018

WELL LOCATION AND ACREAGE DEDICATION RECEIVED

AMENDED REPORT

API Number 30-015-44915	Pool Code 98220	Pool Name Purple Sage; Wolfcamp
Property Code 320858	Property Name COTTONWOOD 29-32 FED COM WCB	Well Number 5H
GRID No. 372137	Operator Name CHISHOLM ENERGY OPERATING, LLC	Elevation 3421'

Surface Location

UL or lot No.	Section	Township	Range	Lot Idn	FEET from the	North/SOUTH LINE	FEET from the	East/West Line	County
B	29	26 S	26 E		100	NORTH	1360	EAST	EDDY

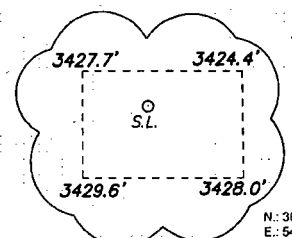
Bottom Hole Location If Different From Surface

UL or lot No.	Section	Township	Range	Lot Idn	FEET from the	North/SOUTH LINE	FEET from the	East/West Line	County
LOT 2	32	26 S	26 E		330	SOUTH	2200	EAST	EDDY
Dedicated Acres 223.08	Joint or Infill	Consolidation Code	Order No.						

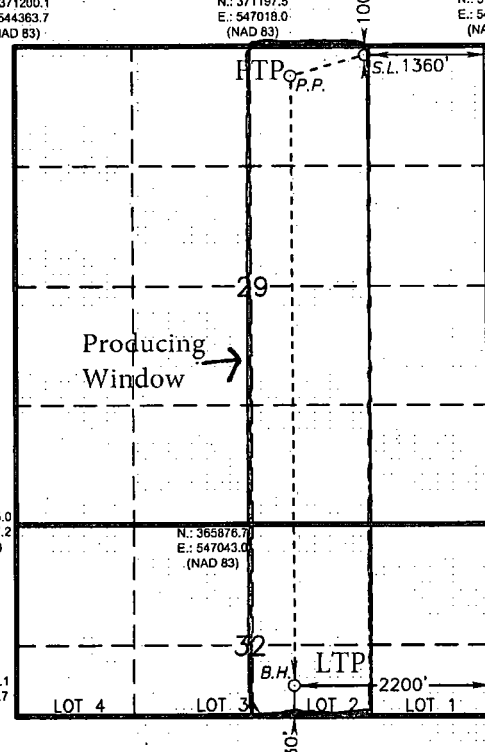
NO ALLOWABLE WILL BE ASSIGNED TO THIS COMPLETION UNTIL ALL INTERESTS HAVE BEEN CONSOLIDATED
OR A NON-STANDARD UNIT HAS BEEN APPROVED BY THE DIVISION

SURFACE LOCATION:
Lat - N 32.02022791°
Long - W 104.31081543°
NMSPCE- N 371098.5
E 548316.2
(NAD-83)

PENETRATION POINT
330' FNL & 2200' FEL
Lat - N 32.01959417°
Long - W 104.31352217°
NMSPCE- N 370867.8
E 547477.4
(NAD-83)



BOTTOM HOLE LOCATION
Lat - N 32.00100980°
Long - W 104.31341226°
NMSPCE- N 364107.4
E 547512.7
(NAD-83)



OPERATOR CERTIFICATION
I hereby certify that the information contained herein is true and complete to the best of my knowledge and belief, and that this organization either owns a working interest or unleased mineral interest in the land including the proposed bottom hole location or has a right to drill this well at this location pursuant to a contract with an owner of such a mineral or working interest, or to a voluntary pooling agreement or a compulsory pooling order heretofore entered by the division.

Bettie Watson 8/3/2017
Signature Date

Bettie Watson
Printed Name
bettie@watsonreg.com
Email Address

SURVEYOR CERTIFICATION
I hereby certify that the well location shown on this plat was plotted from field notes of actual surveys made by me or under my supervision, and that the same is true and correct to the best of my belief.

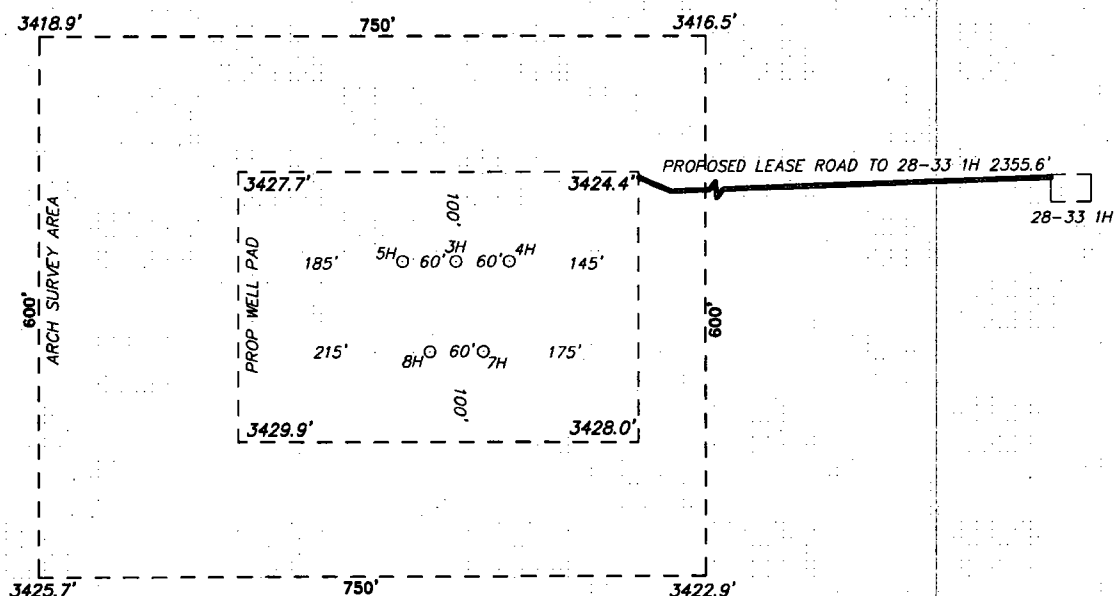
Date Surveyed
Signature of Professional Surveyor
7977

Certificate No. 7977
Basin Survey

0' 1000' 2000' 3000' 4000'
SCALE: 1" = 2000'
WO Num.: 33113

RW 4-25-18

SECTION 29, TOWNSHIP 26 SOUTH, RANGE 26 EAST, N.M.P.M.,
EDDY COUNTY, NEW MEXICO.



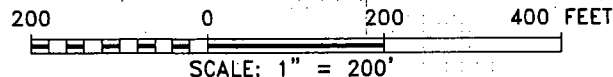
CHISHOLM ENERGY OPERATING, LLC
COTTONWOOD 29-32 FED COM WCB 5H
ELEV. - 3421'

Lat - N 32.02022791°
Long - W 104.31081543°
NMSPCE- N 371098.5
E 548316.2
(NAD-83)

Directions to Location:

FROM THE INTERSECTION OF GYPSUM & DILLAHUNTY
ROAD GO SOUTH ON, ON DILLAHUNTY GO SOUTH 1.2
MILES TO LEASE ROAD; CONTINUE 1.2 MILES
SOUTHERLY TO PROPOSED LEASE ROAD.

WHITE CITY, NM IS ±11 MILES TO THE NORTHWEST OF LOCATION.



CHISHOLM ENERGY OPERATING, LLC

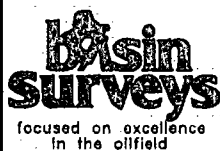
REF: COTTONWOOD 29-32 FED COM WCB 5H / WELL PAD TOPO

THE COTTONWOOD 29-32 FED COM WCB 5H LOCATED 100' FROM

THE NORTH LINE AND 1360' FROM THE EAST LINE OF

SECTION 29, TOWNSHIP 26 SOUTH, RANGE 26 EAST,

N.M.P.M., EDDY COUNTY, NEW MEXICO.



P.O. Box 1786 (575) 393-7316 - Office
1120 N. West County Rd. (575) 392-2206 - Fax
Hobbs, New Mexico 88241 basinsurveys.com

W.O. Number: 33116 Drawn By: K. GOAD Date: 07-24-2017 Survey Date: 07-11-2017 Sheet 1 of 1 Sheets