

DISTRICT I  
1825 N. French Dr., Hobbs, NM 88240  
Phone (575) 393-6161 Fax: (575) 393-0720

DISTRICT II  
811 S. First St., Artesia, NM 88210  
Phone (575) 748-1283 Fax: (575) 748-0720

DISTRICT III  
1000 Rio Brazos Rd., Aztec, NM 87410  
Phone (505) 334-6178 Fax: (505) 334-6170

DISTRICT IV  
1226 S. St. Francis Dr., Santa Fe, NM 87505  
Phone (505) 478-3460 Fax: (505) 478-3462

State of New Mexico  
Energy, Minerals and Natural Resources Department

OIL CONSERVATION DIVISION

1226 South St. Francis Dr.  
Santa Fe, New Mexico 87505

Form C-102

Revised August 1, 2011

OIL CONSERVATION  
ARTESIA DISTRICT  
Submit one copy to appropriate District Office

APR 26 2018

RECEIVED AMENDED REPORT

WELL LOCATION AND ACREAGE DEDICATION PLAT

API Number <b>30-015-44918</b>	Pool Code <b>62014-64010</b>	Pool Name <b>WELCH; BONE SPRING</b>
Property Code <b>319521</b>	Property Name <b>COTTONWOOD 29-32 FED COM 2BS</b>	Well Number <b>8H</b>
OGRID No. <b>372137</b>	Operator Name <b>CHISHOLM ENERGY OPERATING, LLC</b>	Elevation <b>3421'</b>

Surface Location

UL or lot No.	Section	Township	Range	Lot Idn	FEET from the	North/SOUTH LINE	FEET from the	East/West Line	County
A	29	26 S	26 E		200	NORTH	1295	EAST	EDDY

Bottom Hole Location If Different From Surface

UL or lot No.	Section	Township	Range	Lot Idn	FEET from the	North/SOUTH LINE	FEET from the	East/West Line	County
LOT 2	32	26 S	26 E		330	SOUTH	1450	EAST	EDDY
Dedicated Acres <b>223.08</b>	Joint or Infill	Consolidation Code	Order No.						

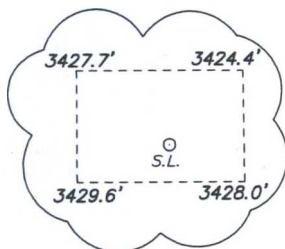
NO ALLOWABLE WILL BE ASSIGNED TO THIS COMPLETION UNTIL ALL INTERESTS HAVE BEEN CONSOLIDATED  
OR A NON-STANDARD UNIT HAS BEEN APPROVED BY THE DIVISION

SURFACE LOCATION

Lat - N 32.01995287°  
Long - W 104.31060334°  
NMSPC- N 370998.5  
E 548382.0  
(NAD-83)

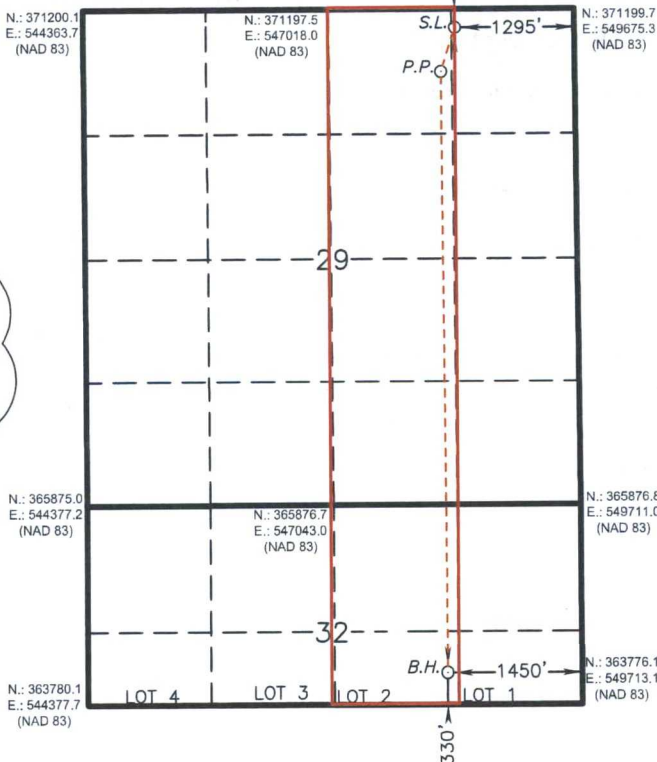
PENETRATION POINT

670' FNL & 1450' FEL  
Lat - N 32.01866148°  
Long - W 104.31109410°  
NMSPC- N 370528.7  
E 548230.0  
(NAD-83)



BOTTOM HOLE LOCATION

Lat - N 32.00100793°  
Long - W 104.31099158°  
NMSPC- N 364106.9  
E 548263.1  
(NAD-83)



OPERATOR CERTIFICATION

I hereby certify that the information contained herein is true and complete to the best of my knowledge and belief, and that this organization either owns a working interest or unleased mineral interest in the land including the proposed bottom hole location or has a right to drill this well at this location pursuant to a contract with an owner of such a mineral or working interest, or to a voluntary pooling agreement or a compulsory pooling order heretofore entered by the division.

*Jennifer Elrod* 03/20/18  
Signature Date

JENNIFER ELROD

Printed Name  
jelrod@chisholmenergy.com

Email Address

SURVEYOR CERTIFICATION

I hereby certify that the well location shown on this plat was plotted from field notes of actual surveys made by me or under my supervision, and that the same is true and correct to the best of my belief.

Date Surveyed  
Signature of Professional Surveyor

Certificate No. Gary L. Jones 7977  
Basin Services

0' 1000' 2000' 3000' 4000'  
SCALE: 1" = 2000'  
WO Num.: 33403

RW 4-27-18



U.S. Department of the Interior  
BUREAU OF LAND MANAGEMENT

## Drilling Plan Data Report

04/23/2018

APD ID: 10400021490

Submission Date: 09/15/2017

Highlighted data  
reflects the most  
recent changes

Operator Name: CHISHOLM ENERGY OPERATING LLC

Well Name: COTTONWOOD 29-32 FED COM 2BS

Well Number: 8H

[Show Final Text](#)

Well Type: OIL WELL

Well Work Type: Drill

### Section 1 - Geologic Formations

Formation ID	Formation Name	Elevation	True Vertical Depth	Measured Depth	Lithologies	Mineral Resources	Producing Formation
1	CASTILE	3384	0	0	SALT, ANHYDRITE	USEABLE WATER	No
2	DELAWARE	1684	1700	1700	SHALE, SANDSTONE, SILTSTONE	NATURAL GAS, OIL	No
3	BONE SPRING	-1816	5200	5200	LIMESTONE, SHALE	NATURAL GAS, OIL	No
4	BONE SPRING 1ST	-2681	6065	6065	SHALE, SANDSTONE, SILTSTONE	NATURAL GAS, OIL	No
5	BONE SPRING 2ND	-3216	6600	6600	SHALE, SANDSTONE, SILTSTONE	NATURAL GAS, OIL	Yes

### Section 2 - Blowout Prevention

Pressure Rating (PSI): 5M

Rating Depth: 12500

Equipment: Rotating head, Mud Gas Separator, Flare Line, Remote Kill Line

Requesting Variance? YES

Variance request: MULTI-BOWL WELLHEAD AND FLEX CHOKE HOSE

Testing Procedure: As per Onshore Order #2

Choke Diagram Attachment:

5M\_Choke\_Manifold\_Diagram\_20170911134818.PDF

BOP Diagram Attachment:

5m\_BOP\_Diagram\_20170911134828.pdf