

Submit 1 Copy To Appropriate District
Office
District I
1625 N. French Dr., Hobbs, NM 88240
District II
1301 W. Grand Ave., Artesia, NM 88210
District III
1000 Rio Brazos Rd., Aztec, NM 87410
District IV
1220 S. St. Francis Dr., Santa Fe, NM
87505

State of New Mexico
Energy, Minerals and Natural Resources

OIL CONSERVATION DIVISION
1220 South St. Francis Dr.
Santa Fe, NM 87505

Form C-103
Revised July 18, 2013

WELL API NO. 30-015-44216
5. Indicate Type of Lease STATE <input checked="" type="checkbox"/> FEE <input type="checkbox"/>
6. State Oil & Gas Lease No.
7. Lease Name or Unit Agreement Name: Remuda South 25 State
8. Well Number 705H
9. OGRID Number 005380
10. Pool name or Wildcat Forty-Niner Ridge; Bone Spring, Wes
11. Elevation (Show whether DR, RKB, RT, GR, etc.) 3061

SUNDRY NOTICES AND REPORTS ON WELLS
(DO NOT USE THIS FORM FOR PROPOSALS TO DRILL OR TO DEEPEN OR PLUG BACK TO A DIFFERENT RESERVOIR. USE "APPLICATION FOR PERMIT" (FORM C-101) FOR SUCH PROPOSALS.)

1. Type of Well: Oil Well ☒ Gas Well ☐ Other ☐

2. Name of Operator
XTO Energy, Inc.

3. Address of Operator
6401 Holiday Hill Road Bldg 5 Midland, Texas 79707

4. Well Location

Unit Letter **G** : **2330** feet from the **North** line and **1980** feet from the **East** line
Section **25** Township **23S** Range **29E** NMPM County **Eddy**

11. Elevation (Show whether DR, RKB, RT, GR, etc.)
3061

12. Check Appropriate Box to Indicate Nature of Notice, Report, or Other Data

NOTICE OF INTENTION TO:

PERFORM REMEDIAL WORK ☐ PLUG AND ABANDON ☐
TEMPORARILY ABANDON ☐ CHANGE PLANS ☒
PULL OR ALTER CASING ☐ MULTIPLE COMPL ☐
DOWNHOLE COMMINGLE ☐
CLOSED-LOOP SYSTEM ☐
OTHER: ☐

SUBSEQUENT REPORT OF:

REMEDIAL WORK ☐ ALTERING CASING ☐
COMMENCE DRILLING OPNS. ☐ P AND A ☐
CASING/CEMENT JOB ☐
OTHER: ☐

13. Describe proposed or completed operations. (Clearly state all pertinent details, and give pertinent dates, including estimated date of starting any proposed work). SEE RULE 19.15.7.14 NMAC.. For Multiple Completions: Attach wellbore diagram of proposed completion or recompletion.

XTO Energy, Inc. respectfully requests to change the surface hole location of the well. An updated C-102 is attached.

RECEIVED

APR 25 2018

DISTRICT II-ARTESIA O.C.

Spud Date:

Rig Release Date:

I hereby certify that the information above is true and complete to the best of my knowledge and belief.

SIGNATURE Stephanie Rabadue TITLE Regulatory Analyst DATE 03/26/2018

Type or print name Stephanie Rabadue E-mail address: stephanie_rabadue@xtoenergy.com PHONE 432-620-6714

For State Use Only

APPROVED BY Raymond M. Delany TITLE Geologist DATE 5-7-18
Conditions of Approval (if any):

APR 25 2018

Revised August 1, 2011

Submit one copy to appropriate

District Office

☐ AMENDED REPORT

District I
1625 N. French Dr., Hobbs, NM 88240
Phone: (575) 393-6161 Fax: (575) 393-0720

District II
811 S. First St., Artesia, NM 88210
Phone: (575) 748-1283 Fax: (575) 748-9720

District III
1000 Rio Brazos Road, Aztec, NM 87410
Phone: (505) 334-6178 Fax: (505) 334-6170

District IV
1220 S. St. Francis Dr., Santa Fe, NM 87505
Phone: (505) 476-3460 Fax: (505) 476-3462

State of New Mexico
Energy, Minerals & Natural Resources Department
OIL CONSERVATION DIVISION
1220 South St. Francis Dr.
Santa Fe, NM 87505

DISTRICT II-ARTESIA

1 API Number 30-015-44216		2 Pool Code 96526		3 Pool Name Forty-Niner Ridge; Bone Spring, w/s	
4 Property Code 317788		5 Property Name REMUDA SOUTH 25 STATE		6 Well Number 705H	
7 OGRID NO. 005380		8 Operator Name XTO ENERGY, INC.		9 Elevation 3061'	

¹⁰ Surface Location

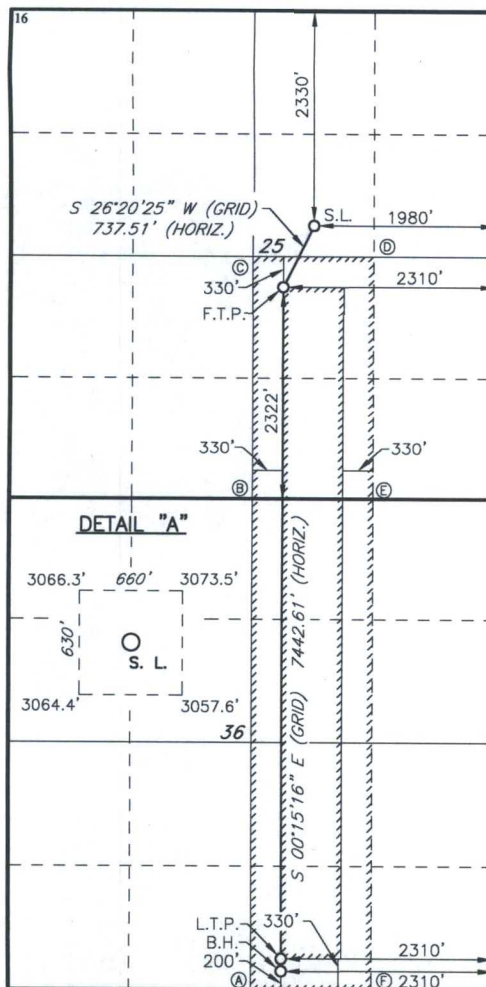
UL or lot no.	Section	Township	Range	Lot Idn	Feet from the	North/South line	Feet From the	East/West line	County
G	25	23S	29E		2330	NORTH	1980	EAST	EDDY

¹¹ Bottom Hole Location If Different From Surface

UL or lot no.	Section	Township	Range	Lot Idn	Feet from the	North/South line	Feet from the	East/West line	County
0	36	23S	29E		200	SOUTH	2310	EAST	EDDY

12 Dedicated Acres	13 Joint or Infill	14 Consolidation Code	15 Order No.
240			

No allowable will be assigned to this completion until all interest have been consolidated or a non-standard unit has been approved by the division.



<u>GEODETIC DATA</u>	<u>GEODETIC DATA</u>
<u>NAD 27 GRID - NM EAST</u>	<u>NAD 83 GRID - NM EAST</u>
<u>SURFACE LOCATION</u>	<u>SURFACE LOCATION</u>
N: 464590.4 - E: 622955.0	N: 464649.8 - E: 664138.4
LAT: 32.27664914" N	LAT: 32.27677165" N
LONG: 103.93549976" W	LONG: 103.93598920" W
<u>FIRST TAKE POINT</u>	<u>FIRST TAKE POINT</u>
N: 463929.6 - E: 622627.8	N: 463989.0 - E: 663811.2
LAT: 32.27483601" N	LAT: 32.27495841" N
LONG: 103.93656622" W	LONG: 103.93705576" W
<u>CORNER DATA</u>	<u>CORNER DATA</u>
<u>NAD 27 GRID - NM EAST</u>	<u>NAD 83 GRID - NM EAST</u>
A: FOUND BRASS CAP "1942"	A: FOUND BRASS CAP "1942"
N: 456288.0 - E: 622317.9	N: 456347.1 - E: 663501.5
B: FOUND BRASS CAP "1942"	B: FOUND BRASS CAP "1942"
N: 461608.1 - E: 622290.7	N: 461667.4 - E: 663474.2
C: CALCULATED CORNER	C: CALCULATED CORNER
N: 464259.7 - E: 622285.8	N: 464319.1 - E: 663469.2
D: CALCULATED CORNER	D: CALCULATED CORNER
N: 464259.0 - E: 623611.2	N: 464318.4 - E: 664794.6
E: CALCULATED CORNER	E: CALCULATED CORNER
N: 461609.4 - E: 623619.0	N: 461668.7 - E: 664802.5
F: CALCULATED CORNER	F: CALCULATED CORNER
N: 456290.9 - E: 623644.5	N: 456350.0 - E: 664828.1
<u>GEODETIC DATA</u>	<u>GEODETIC DATA</u>
<u>NAD 27 GRID - NM EAST</u>	<u>NAD 83 GRID - NM EAST</u>
<u>LAST TAKE POINT</u>	<u>LAST TAKE POINT</u>
N: 456618.6 - E: 622660.4	N: 456677.8 - E: 663844.0
LAT: 32.25473851" N	LAT: 32.25486108" N
LONG: 103.93654833" W	LONG: 103.93703708" W
<u>BOTTOM HOLE</u>	<u>BOTTOM HOLE</u>
N: 456488.7 - E: 622660.9	N: 456547.9 - E: 663844.5
LAT: 32.25438123" N	LAT: 32.25450380" N
LONG: 103.93654833" W	LONG: 103.93703708" W

17 OPERATOR CERTIFICATION

I hereby certify that the information contained herein is true and complete to the best of my knowledge and belief, and that this organization either owns a working interest or unleased mineral interest in the land including the proposed bottom hole location or has a right to drill this well at this location pursuant to a contract with an owner of such a mineral or working interest, or to a voluntary pooling agreement or a compulsory pooling order heretofore entered by the division.

Stephanie Rabadue 3/22/18
Signature Date
Stephanie Rabadue
Printed Name
Stephanie - rabadue@
E-mail Address xtheenergy.com

18 SURVEYOR CERTIFICATION

I hereby certify that the well location shown on this plat was plotted from field notes of actual surveys made by me or under my supervision, and that the same is true and correct to the best of my belief.

2-23-2017

Date of Survey

Signature and Seal of Professional Sur

19680

Certificate Number

RRC - Firm No.: TX 10193838 NM 4655451 - Job No.: LS1702095

RWP 5-7-18