

UNITED STATES  
DEPARTMENT OF THE INTERIOR  
BUREAU OF LAND MANAGEMENT

OCD Artesia

FORM APPROVED  
OMB NO. 1004-0137  
Expires: January 31, 2018**SUNDRY NOTICES AND REPORTS ON WELLS**  
*Do not use this form for proposals to drill or to re-enter an abandoned well. Use form 3160-3 (APD) for such proposals.*5. Lease Serial No.  
NMNM0503

6. If Indian, Allottee or Tribe Name

7. If Unit or CA/Agreement, Name and/or No.

**Nm 70928X**8. Well Name and No.  
COTTON DRAW UNIT 239H9. API Well No.  
30-015-4327010. Field and Pool or Exploratory Area  
PADUCA; BONE SPRING

11. County or Parish, State

EDDY COUNTY, NM

**SUBMIT IN TRIPLICATE - Other instructions on page 2**

1. Type of Well

☒ Oil Well ☐ Gas Well ☐ Other

2. Name of Operator

DEVON ENERGY PROD CO., L.P.

Contact: LINDA GOOD

E-Mail: linda.good@dev.com

3a. Address

333 WEST SHERIDAN AVE.  
OKLAHOMA CITY, OK 73102

3b. Phone No. (include area code)

Ph: 405-552-6558

4. Location of Well (Footage, Sec., T., R., M., or Survey Description)

Sec 13 T25S R31E Mer NMP NWNW 200FNL 660FWL**12. CHECK THE APPROPRIATE BOX(ES) TO INDICATE NATURE OF NOTICE, REPORT, OR OTHER DATA**

TYPE OF SUBMISSION	TYPE OF ACTION			
<input type="checkbox"/> Notice of Intent	<input type="checkbox"/> Acidize	<input type="checkbox"/> Deepen	<input type="checkbox"/> Production (Start/Resume)	<input type="checkbox"/> Water Shut-Off
<input checked="" type="checkbox"/> Subsequent Report	<input type="checkbox"/> Alter Casing	<input type="checkbox"/> Hydraulic Fracturing	<input type="checkbox"/> Reclamation	<input type="checkbox"/> Well Integrity
<input type="checkbox"/> Final Abandonment Notice	<input type="checkbox"/> Casing Repair	<input type="checkbox"/> New Construction	<input type="checkbox"/> Recomplete	<input checked="" type="checkbox"/> Other
	<input type="checkbox"/> Change Plans	<input type="checkbox"/> Plug and Abandon	<input type="checkbox"/> Temporarily Abandon	Site Facility Diagram/Security Plan
	<input type="checkbox"/> Convert to Injection	<input type="checkbox"/> Plug Back	<input type="checkbox"/> Water Disposal	

13. Describe Proposed or Completed Operation: Clearly state all pertinent details, including estimated starting date of any proposed work and approximate duration thereof. If the proposal is to deepen directionally or recompletable horizontally, give subsurface locations and measured and true vertical depths of all pertinent markers and zones. Attach the Bond under which the work will be performed or provide the Bond No. on file with BLM/BIA. Required subsequent reports must be filed within 30 days following completion of the involved operations. If the operation results in a multiple completion or recompletable in a new interval, a Form 3160-4 must be filed once testing has been completed. Final Abandonment Notices must be filed only after all requirements, including reclamation, have been completed and the operator has determined that the site is ready for final inspection.

Per conversation with Duncan Whitlock, Devon Energy Production Company, LP respectfully submits the following changes. Please find the attached updated Central Tank Battery and Site Facility Diagrams for each well.

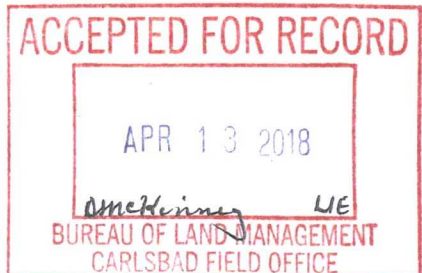
Unit Number: NMNM70928X  
Cotton Draw Unit 1-12 CTB  
Location NESW, Sec 12-T25S-R31E  
Equipment Added: Buyback Meter 390-00-737

Lease Number: NMLC061862  
Cotton Draw Unit 238H  
Location (NWNW, Sec 13-T25S-R31E  
API: 30-015-43269

RECEIVED

APR 19 2018

EQUIPMENT ARTESIA O.C.D.



**OC 4-23-18**  
**Accepted for record - NMOCD**

14. I hereby certify that the foregoing is true and correct.

Electronic Submission #373141 verified by the BLM Well Information System  
For DEVON ENERGY PROD CO., L.P., sent to the Carlsbad  
Committed to AFMSS for processing by DEBORAH MCKINNEY on 04/20/2017 ()

Name (Printed/Typed) LINDA GOOD

Title REGULATORY SPECIALIST

Signature (Electronic Submission)

Date 04/18/2017

**THIS SPACE FOR FEDERAL OR STATE OFFICE USE**

Approved By

Title

Date

Conditions of approval, if any, are attached. Approval of this notice does not warrant or certify that the applicant holds legal or equitable title to those rights in the subject lease which would entitle the applicant to conduct operations thereon.

Office

Title 18 U.S.C. Section 1001 and Title 43 U.S.C. Section 1212, make it a crime for any person knowingly and willfully to make to any department or agency of the United States any false, fictitious or fraudulent statements or representations as to any matter within its jurisdiction.

(Instructions on page 2)

**\*\* OPERATOR-SUBMITTED \*\* OPERATOR-SUBMITTED \*\* OPERATOR-SUBMITTED \*\***

**Additional data for EC transaction #373141 that would not fit on the form**

**32. Additional remarks, continued**

Compressor & Injection Meter Number 390-00-735  
Well status changed from flowing to gas lift

Lease Number: NMNM00503 ✓  
Cotton Draw Unit 239H  
Location NWNW, Sec 13-25S-31E  
API: 30-015-43207  
Equipment Added: Compressor & Injection Meter Number 390-00-736  
Well status changed from flowing to gas lift

Lease Number: NMNM00503 ✓  
Cotton Draw Unit 242H  
Location NWSE, Sec 12-25S-31E  
API: 30-015-43274  
Compressor & Injection Meter Number 390-00-784  
Well status changed from flowing to gas lift  
Equipment Added:

Lease Number: NMLC061862 ✓  
Cotton Draw Unit 240H  
Location NENW, Sec 13-25S-31E  
API: 30-015-43215  
Equipment Added: Compressor & Injection Meter Number 390-00-738  
Well status changed from flowing to gas lift

Lease Number: NMNM0503 ✓  
Cotton Draw Unit 241H  
Location NENW, Sec 13-25S-31E  
API: 30-015-43220  
Equipment Added: Compressor & Injection Meter Number 390-00-739  
Well status changed from flowing to gas lift

Lease Number: NMNM0503 ✓  
Cotton Draw Unit 243H  
Location NESE, Sec 12-25S-31E  
API: 30-015-43599  
Equipment Added: Compressor & Injection Meter Number 390-00-795  
Well status changed from flowing to gas lift

Lease Number: NMLC061862 ✓  
Cotton Draw Unit 223H  
Location NWSE, Sec 12-25S-31E  
API: 30-015-43275  
Equipment Added: Compressor & Injection Meter Number 390-00-783  
Well status changed from flowing to gas lift

Lease Number: NMLC061862 ✓  
Cotton Draw Unit 224H  
Location NESE, Sec 12-25S-31E  
API: 30-015-43182  
Equipment Added: Compressor & Injection Meter Number 390-00-794  
Well status changed from flowing to gas lift

Cotton Draw Unit 1-12 BS CTB  
NE/4 SW/4 S12 T25S R31E  
Eddy, NM  
NMNM70928X

Production System: Open

1) Oil sales by tank gauge to tank truck.

2) Seal requirements:

A. Production Phase: On all Tanks.

(1) All valves 5 sealed closed.

Sales Phase: On Tank being hauled.

(1) Valve 1 sealed closed.

(2) Valve 3 sealed closed.

(3) Valve 4 sealed closed.

(4) Valve 5 sealed closed.

(5) Misc. Valves: Plugged or otherwise unaccessible.

NOTE: Valve 2 is either a test or roll line if there is a valve 2 it will be sealed closed.

Ledger for Site Diagram

Valve #1: Production Line

Valve #2: Test or Roll line

Valve #3: Equalizer Line

Valve #4: Circ./Drain Line

Valve #5: Sies Line

Valve #6: BS&W Load Line

Buried Lines:

Firewall:

Wellhead:

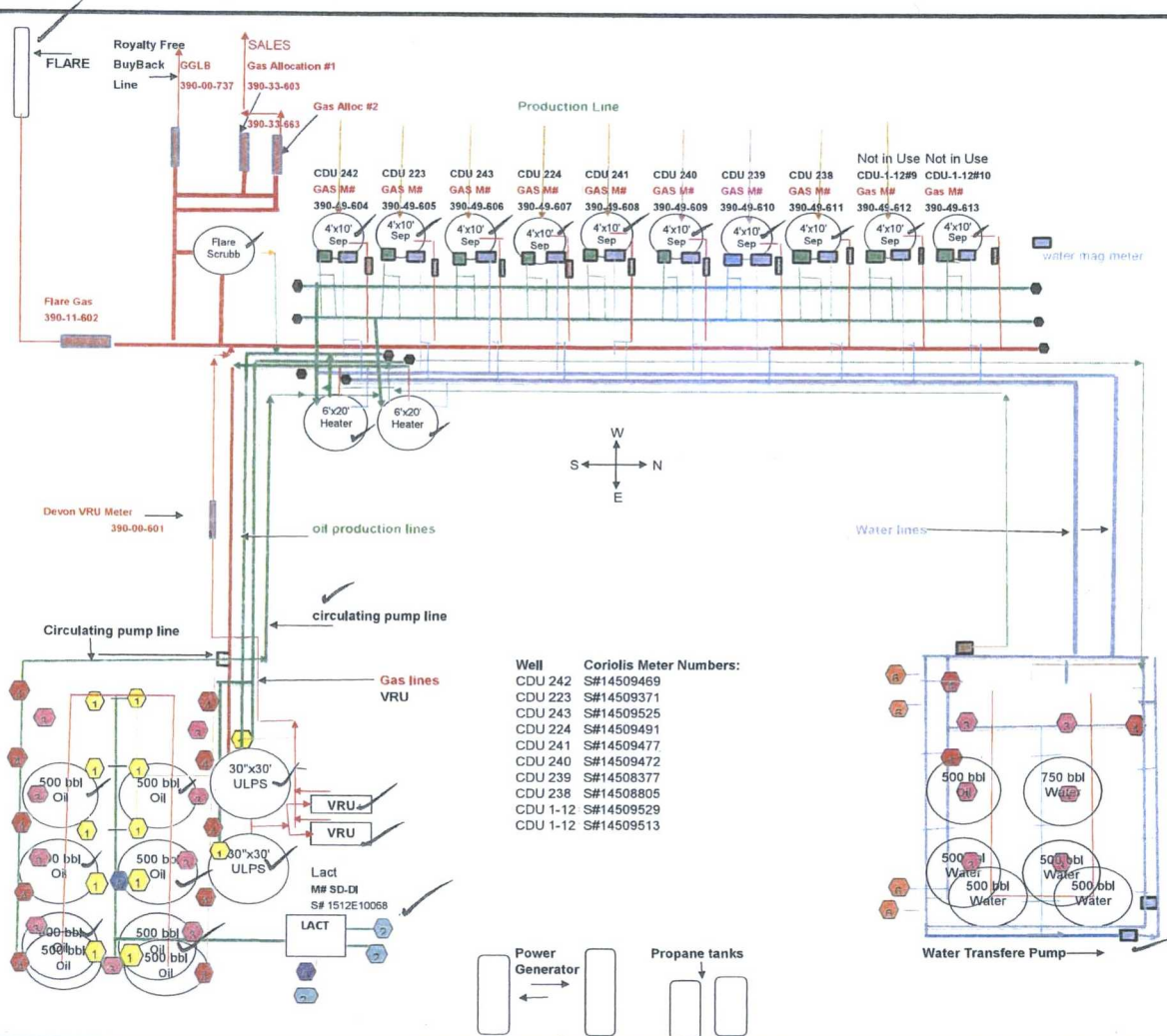
Stak-pak:

Production line:

Water line:

Gas Meter

A M C





Cotton Draw Unit 223H & Cotton Draw Unit 242H  
 NW/4 SE/4 S12, T25S, R31E & NW/4 SE/4 S12, T25S, R31E  
 2405' FSL 2395' FEL & 2440' FSL 2430' FEL  
 Eddy County, NM & Eddy County, NM  
 API #30-15-43275 API #30-15-43274  
 NMLC061862 & NMNM0503

Production System: Open

1) Oil sales by tank gauge to tank truck.

2) Seal requirements:

A. Production Phase: On all Tanks.

(1) All valves 5 sealed closed.

Sales Phase: On Tank being hauled.


(1) Valve 1 sealed closed. 

(2) Valve 3 sealed closed. 

(3) Valve 4 sealed closed. 

(4) Valve 5 sealed closed. 

{5} Misc. Valves: Plugged or otherwise unaccessible.

NOTE: Valve 2 is either a test or roll line if there is a valve 2 it will be sealed closed. 

#### Ledger for Site Diagram

Valve #1: Production Line 

Valve #2: Test or Roll line 

Valve #3: Equilizer Line 

Valve #4: Circ./Drain Line 

Valve #5: Sies Line 

Valve #6: BS&W Load Line 

Buried Lines: -----

Firewall: 

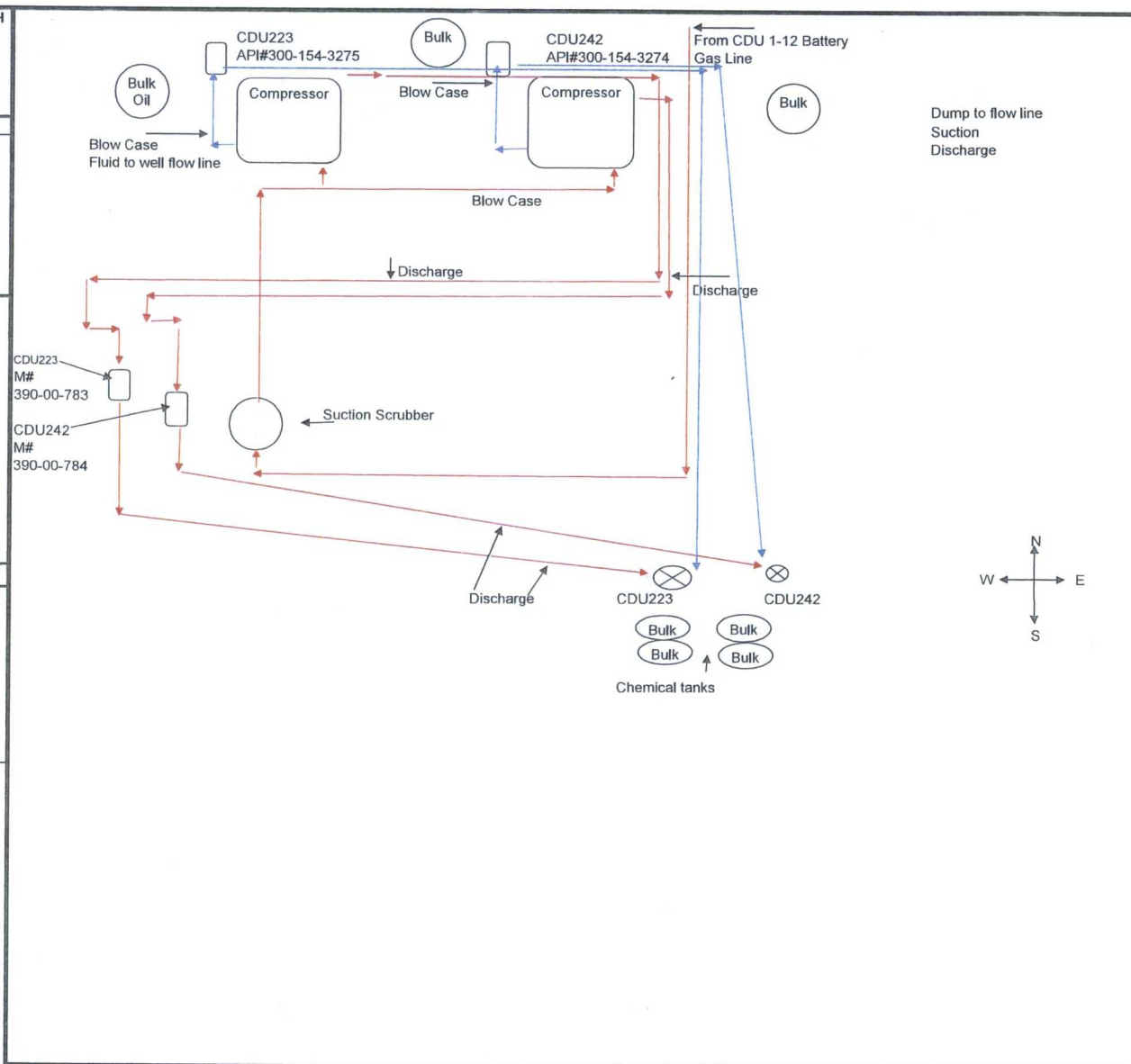
Wellhead: 

Stak-pak: 

Production line: -----

Water line: -----

Gas Meter   



Cotton Draw Unit 224H & Cotton Draw Unit 243H  
 NE/4 SE/4 S12, T25S, R31E & NE/4 SE/4 S12, T25S, R31E  
 2404' FSL 625' FEL & 2440' FSL 660' FEL  
 Eddy County, NM & Eddy County NM  
 API #30-015-43182 & API #30-015-43599  
 NMLC061862 & NMNM0503

Production System: Open

1) Oil sales by tank gauge to tank truck.

2) Seal requirements:

A. Production Phase: On all Tanks.

(1) All valves 5 sealed closed.

Sales Phase: On Tank being hauled.


(1) Valve 1 sealed closed. 

(2) Valve 3 sealed closed. 

(3) Valve 4 sealed closed. 

(4) Valve 5 sealed closed. 

{5} Misc. Valves: Plugged or otherwise  
 unaccessible. 

NOTE: Valve 2 is either a test or roll line  
 if there is a valve 2 it will be sealed  
 closed. 

#### Ledger for Site Diagram

Valve #1: Production Line 

Valve #2: Test or Roll line 

Valve #3: Equalizer Line 

Valve #4: Circ./Drain Line 

Valve #5: Sles Line 

Valve #6: BS&W Load Line 

Buried Lines: 

Firewall: 

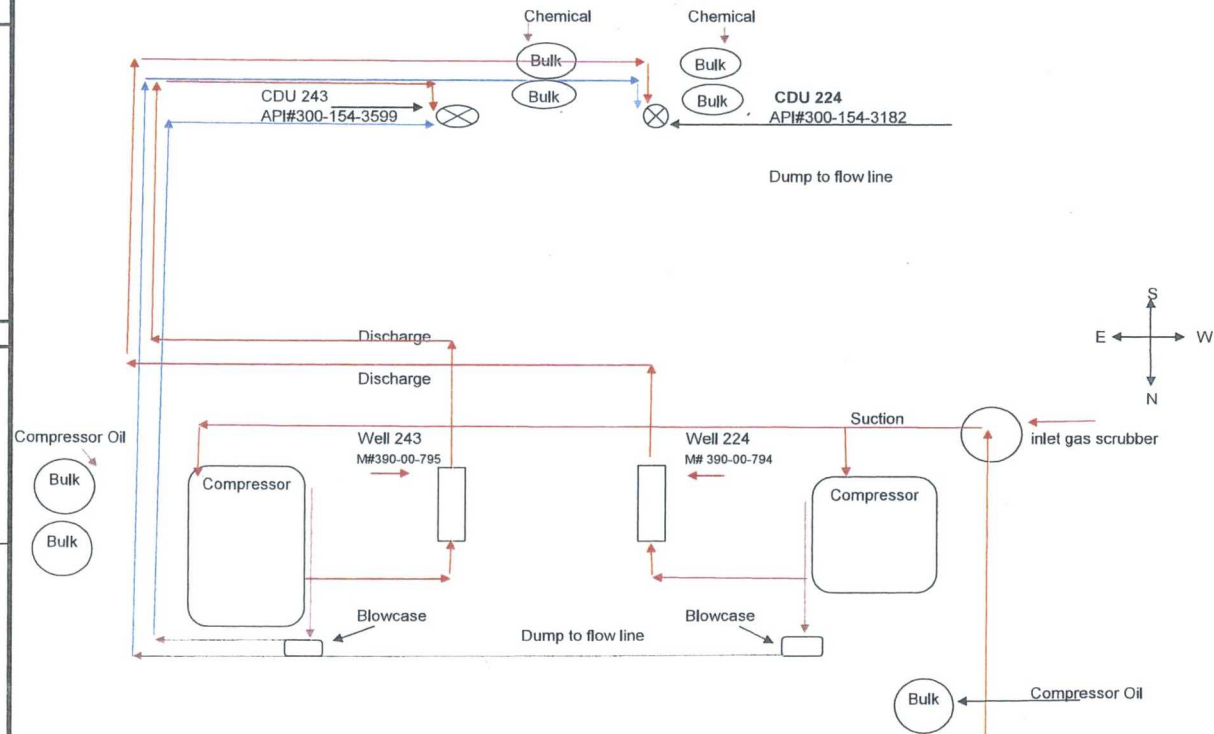
Wellhead: 

Stak-pak: 

Production line: 

Water line: 

Gas Meter   



Cotton Draw Unit 238H & Cotton Draw Unit 239H  
 NW/4 NW/4 S13, T25S, R31E & NW/4 NW/4 S13, T25S, R31E  
 200' FNL 610' FWL & 200' FNL 660' FWL  
 Eddy County, NM & Eddy County, NM  
 API #30-015-43269 & API #30-015-43270  
 NMLC061862 & NMNM0503

Production System: Open

1) Oil sales by tank gauge to tank truck.

2) Seal requirements:

A. Production Phase: On all Tanks.

(1) All valves 5 sealed closed.

Sales Phase: On Tank being hauled.


(1) Valve 1 sealed closed. 

(2) Valve 3 sealed closed. 

(3) Valve 4 sealed closed. 

(4) Valve 5 sealed closed. 

{5} Misc. Valves: Plugged or otherwise unaccessible.

NOTE: Valve 2 is either a test or roll line if there is a valve 2 it will be sealed closed. 

#### Ledger for Site Diagram

Valve #1: Production Line 

Valve #2: Test or Roll line 

Valve #3: Equilizer Line 

Valve #4: Circ./Drain Line 

Valve #5: Sles Line 

Valve #6: BS&W Load Line 

Buried Lines: 

Firewall: 

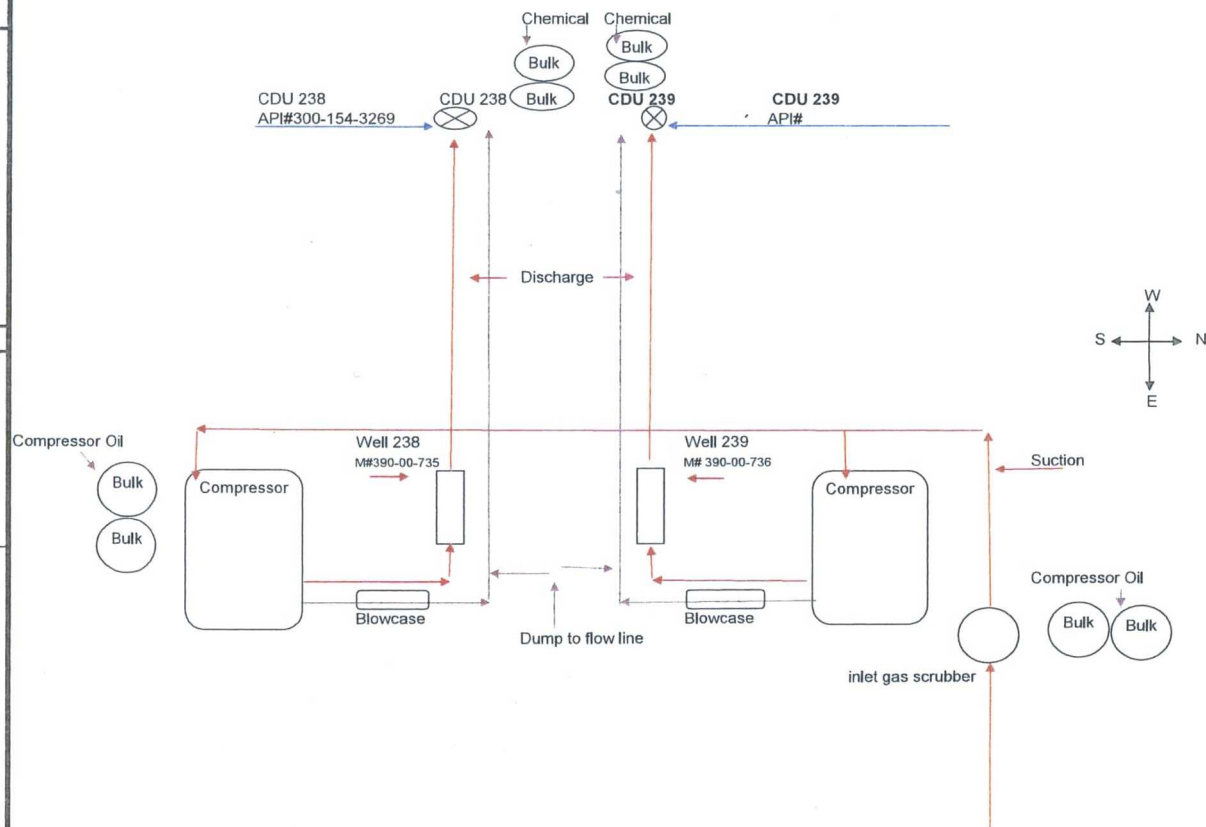
Wellhead: 

Stak-pak: 

Production line: 

Water line: 

Gas Meter   



Cotton Draw Unit 238H & Cotton Draw Unit 239H  
 NW/4 NW/4 S13, T25S, R31E & NW/4 NW/4 S13, T25S, R31E  
 200' FNL 610' FWL & 200' FNL 660' FWL  
 Eddy County, NM & Eddy County, NM  
 API #30-015-43269 & API #30-015-43270  
 NMLC061862 & NMNM0503

Production System: Open

1) Oil sales by tank gauge to tank truck.

2) Seal requirements:

A. Production Phase: On all Tanks.

(1) All valves 5 sealed closed.

Sales Phase: On Tank being hauled.


(1) Valve 1 sealed closed. 

(2) Valve 3 sealed closed. 

(3) Valve 4 sealed closed. 

(4) Valve 5 sealed closed. 

(5) Misc. Valves: Plugged or otherwise unaccessible. 


NOTE: Valve 2 is either a test or roll line if there is a valve 2 it will be sealed closed. 

#### Ledger for Site Diagram

Valve #1: Production Line 

Valve #2: Test or Roll line 

Valve #3: Equilizer Line 

Valve #4: Circ./Drain Line 

Valve #5: Sles Line 

Valve #6: BS&W Load Line 

Buried Lines: 

Firewall: 

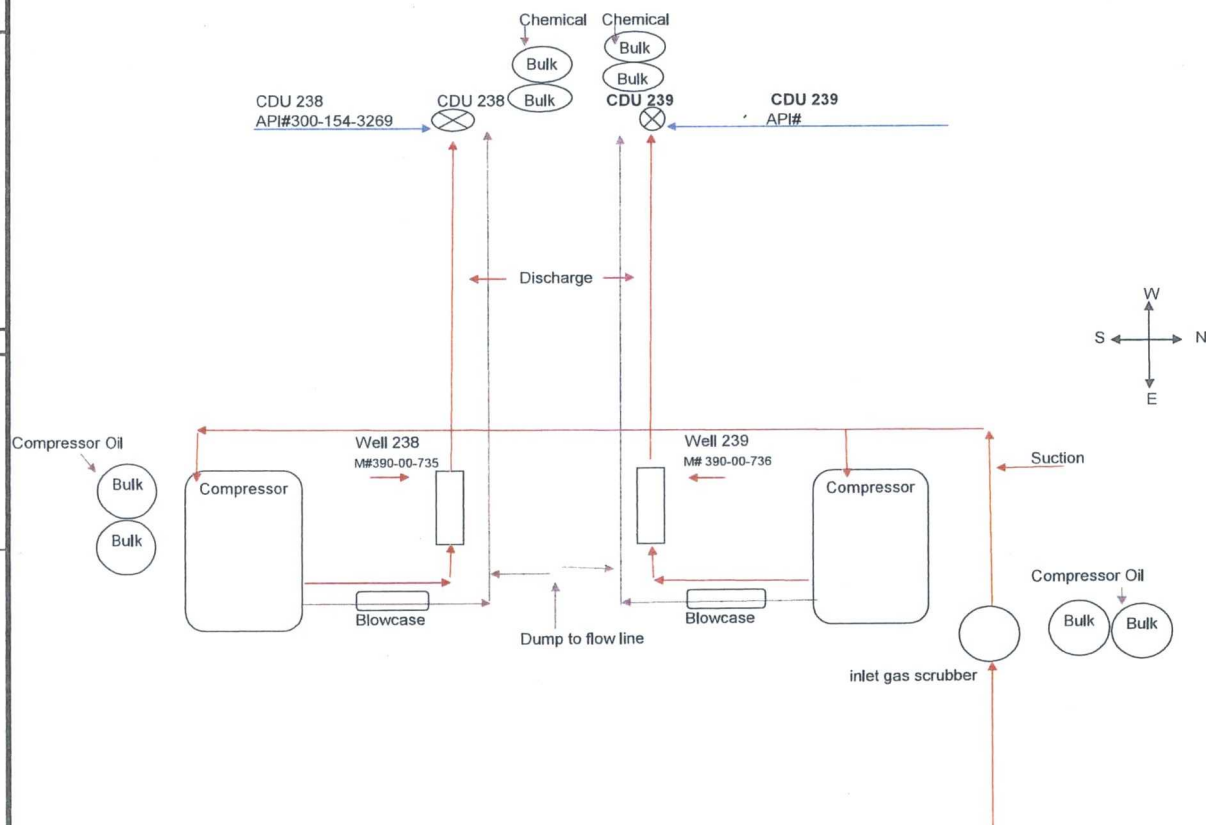
Wellhead: 

Stak-pak: 

Production line: 

Water line: 

Gas Meter   



Cotton Draw Unit 238H & Cotton Draw Unit 239H  
 NW/4 NW/4 S13, T25S, R31E & NW/4 NW/4 S13, T25S, R31E  
 200' FNL 610' FWL & 200' FNL 660' FWL  
 Eddy County, NM & Eddy County, NM  
 API #30-015-43269 & API #30-015-43270  
 NMLC061862 & NMNM0503

Production System: Open

1) Oil sales by tank gauge to tank truck.

2) Seal requirements:

A. Production Phase: On all Tanks.

(1) All valves 5 sealed closed.

Sales Phase: On Tank being hauled.


(1) Valve 1 sealed closed. 

(2) Valve 3 sealed closed. 

(3) Valve 4 sealed closed. 

(4) Valve 5 sealed closed. 

{5} Misc. Valves: Plugged or otherwise unaccessible. 

NOTE: Valve 2 is either a test or roll line if there is a valve 2 it will be sealed closed. 

#### Ledger for Site Diagram

Valve #1: Production Line 

Valve #2: Test or Roll line 

Valve #3: Equilizer Line 

Valve #4: Circ./Drain Line 


Valve #5: Sles Line 

Valve #6: BS&W Load Line 

Buried Lines: 

Firewall: 

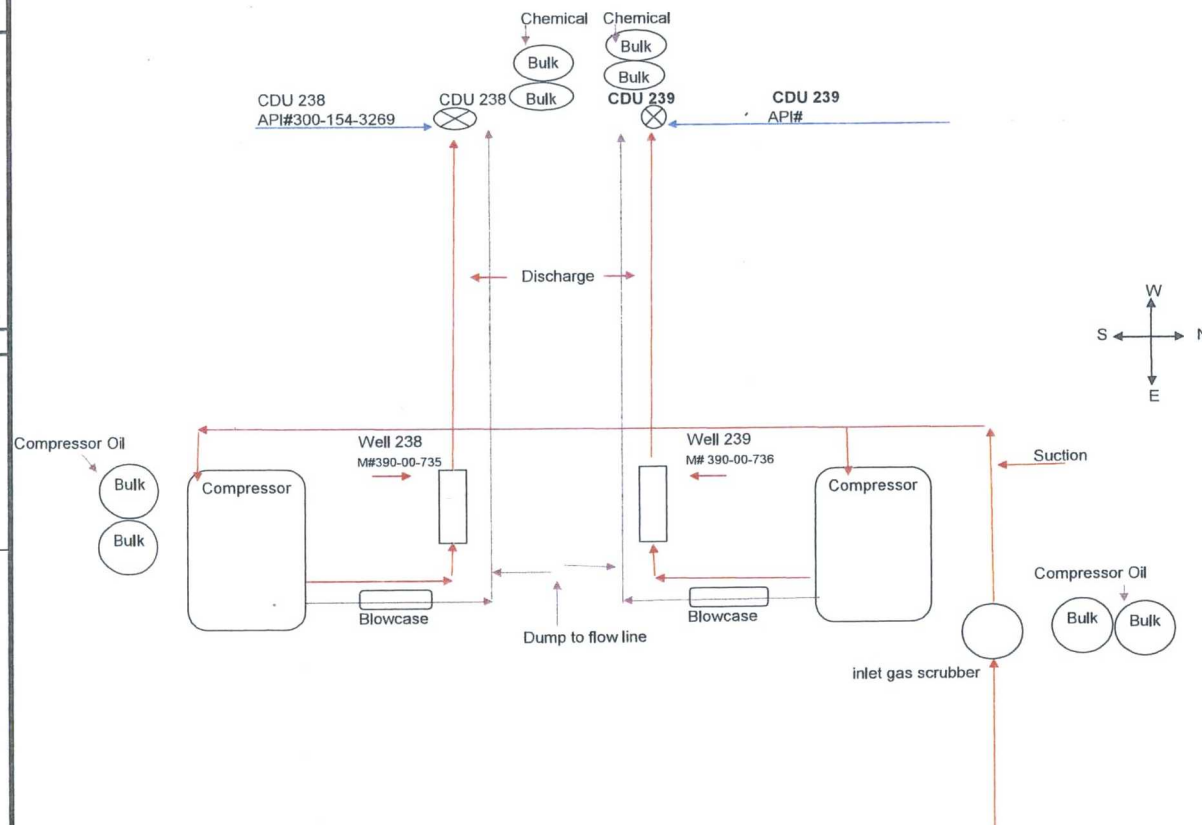
Wellhead: 

Stak-pak: 

Production line: 

Water line: 

Gas Meter   





Cotton Draw Unit 240H & Cotton Draw Unit 241H  
 NE/4 NW/4 S13-T25S-R31E & NE/4 NW/4 S13-T25S-R31E  
 265' FNL 1980' FWL & 215' FNL 1980' FWL  
 Eddy County, NM & Eddy County, NM  
 API #30-015-43215 API #30-015-43220  
 NMLC061862 & NMNM0503

Production System: Open

1) Oil sales by tank gauge to tank truck.

2) Seal requirements:

A. Production Phase: On all Tanks.

(1) All valves 5 sealed closed.

Sales Phase: On Tank being hauled.

(1) Valve 1 sealed closed.

(2) Valve 3 sealed closed.

(3) Valve 4 sealed closed.

(4) Valve 5 sealed closed.

{5} Misc. Valves: Plugged or otherwise unaccessible.

NOTE: Valve 2 is either a test or roll line if there is a valve 2 it will be sealed closed.

#### Ledger for Site Diagram

Valve #1: Production Line

Valve #2: Test or Roll line

Valve #3: Equalizer Line

Valve #4: Circ./Drain Line

Valve #5: Sles Line

Valve #6: BS&W Load Line

Buried Lines: -----

Firewall:

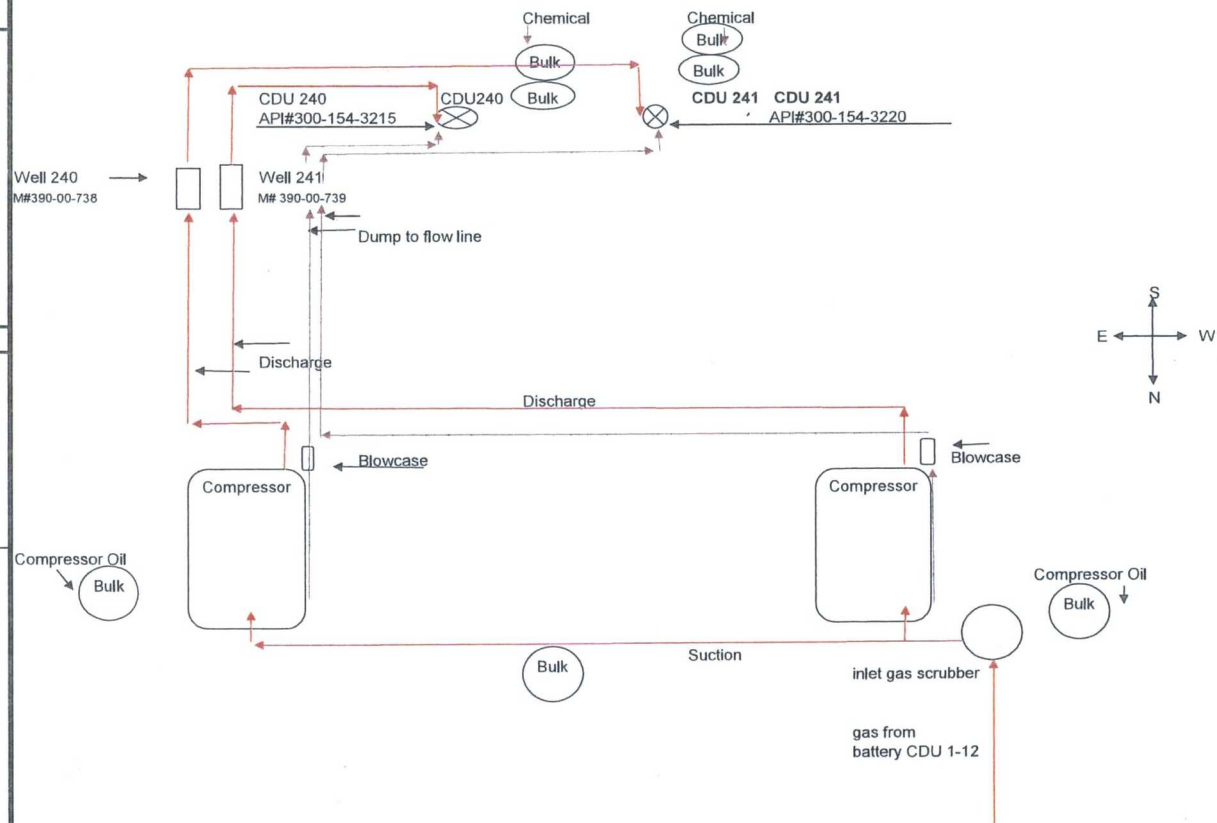
Wellhead:

Stak-pak:

Production line: -----

Water line: -----

Gas Meter



**Cotton Draw Unit 240H & Cotton Draw Unit 241H**  
**NE/4 NW/4 S13-T25S-R31E & NE/4 NW/4 S13-T25S-R31E**  
**265' FNL 1980' FWL & 215' FNL 1980' FWL**  
**Eddy County, NM & Eddy County, NM**  
**API #30-015-43215 API #30-015-43220**  
**NMLC061862 & NMNM0503**

Production System: Open

1) Oil sales by tank gauge to tank truck.

2) Seal requirements:

**A. Production Phase: On all Tanks.**

(1) All valves 5 sealed closed.

**Sales Phase:** On Tank being hauled.

(1) Valve 1 sealed closed. 

(2) Valve 3 sealed closed. 

(3) Valve 4 sealed closed. 

(4) Valve 5 sealed closed. 

{5} Misc. Valves: Plugged or otherwise unaccessible.

**NOTE:** Valve 2 is either a test or roll line if there is a valve 2 it will be sealed closed.

### Ledger for Site Diagram

Valve #1: Production Line 

Valve #2: Test or Roll line 

Valve #3: Equilizer Line 

Valve #4: Circ./Drain Line

Valve #5: Sles Line

Valve #6: BS&W Load Line 

**Buried Lines:** -----

**Firewall:** 

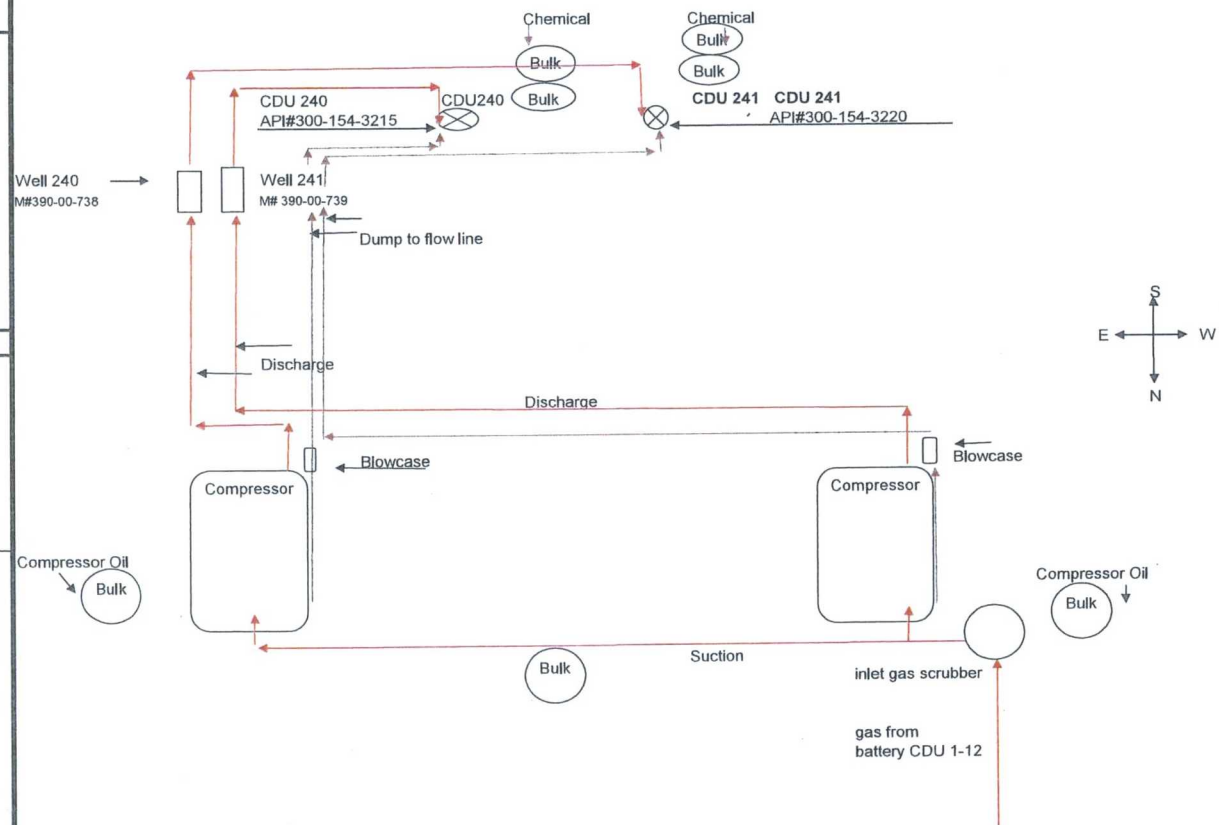
Wellhead: 

Stak-pak:	Stak-pak
-----------	----------

Production line: \_\_\_\_\_

**Water line:** \_\_\_\_\_

Gas Meter (A) (M) (C)



Production System: Open

Production System: Open

- 1) Oil sales by tank gauge to tank truck.
- 2) Seal requirements:

**A. Production Phase: On all Tanks.**

- (1) All valves 5 sealed closed.

**Sales Phase:** On Tank being hauled.

- (1) Valve 1 sealed closed. 
- (2) Valve 3 sealed closed. 
- (3) Valve 4 sealed closed. 
- (4) Valve 5 sealed closed. 

{5} Misc. Valves: Plugged or otherwise  
unaccessible.  

**NOTE:** Valve 2 is either a test or roll line if there is a valve 2 it will be sealed closed.

### Ledger for Site Diagram

- |           |                           |   |
|-----------|---------------------------|---|
| Valve #1: | <u>Production Line</u>    |  |
| Valve #2: | <u>Test or Roll line</u>  |  |
| Valve #3: | <u>Equilizer Line</u>     |  |
| Valve #4: | <u>Circ./Drain Line</u>   |  |
| Valve #5: | <u>Sles Line</u>          |  |
| Valve #6: | <u>BS&amp;W Load Line</u> |  |

**Buried Lines:** -----

Firewall: 

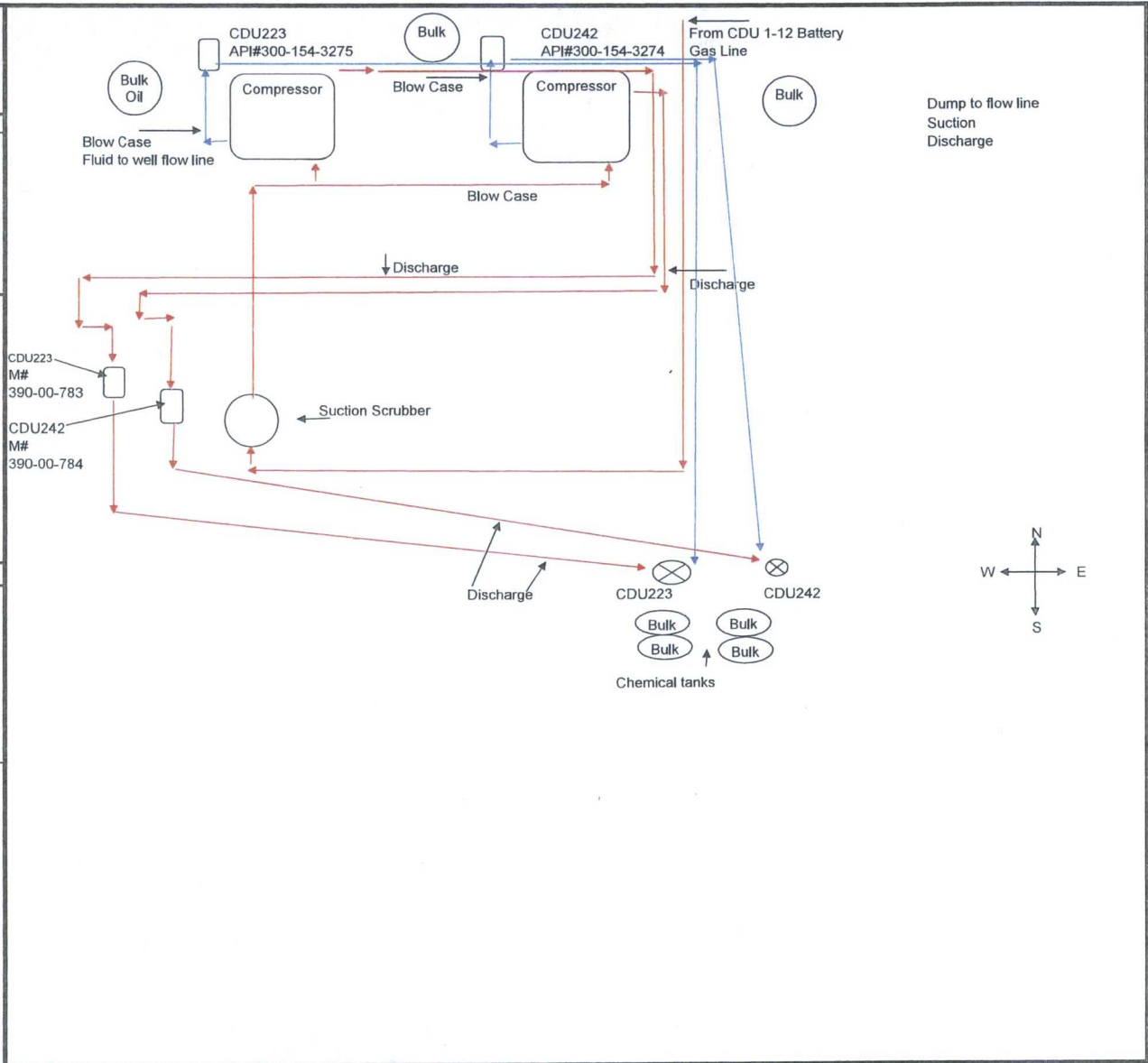
Wellhead: 

Stak-pak: Stak-pak

Production line: \_\_\_\_\_

**Water line:** - . - . - . - . - . - . - . - . - .

Gas Meter      (A)      (M)      (C)



Cotton Draw Unit 224H & Cotton Draw Unit 243H  
NE/4 SE/4 S12, T25S, R31E & NE/4 SE/4 S12, T25S, R31E  
2404' FSL 625' FEL & 2440' FSL 660' FEL  
Eddy County, NM & Eddy County NM  
API #30-015-43182 & API #30-015-43599  
NMLC061862 & NMNM0503

Production System: Open

1) Oil sales by tank gauge to tank truck.

2) Seal requirements:

A. Production Phase: On all Tanks.

(1) All valves 5 sealed closed.

Sales Phase: On Tank being hauled.


(1) Valve 1 sealed closed. 

(2) Valve 3 sealed closed. 

(3) Valve 4 sealed closed. 

(4) Valve 5 sealed closed. 

{5} Misc. Valves: Plugged or otherwise unaccessible.

NOTE: Valve 2 is either a test or roll line if there is a valve 2 it will be sealed closed. 

#### Ledger for Site Diagram

Valve #1: Production Line 

Valve #2: Test or Roll line 

Valve #3: Equalizer Line 

Valve #4: Circ./Drain Line 

Valve #5: Sles Line 

Valve #6: BS&W Load Line 

Buried Lines: -----

Firewall: 

Wellhead: 

Stak-pak: 

Production line: -----

Water line: -----

Gas Meter   

