

District I
1625 N. French Dr., Hobbs, NM 88240
Phone: (575) 393-6161 Fax: (575) 393-0720
District II
811 S. First St., Artesia, NM 88210
Phone: (575) 748-1283 Fax: (575) 748-9720
District III
1000 Rio Brazos Road, Aztec, NM 87410
Phone: (505) 334-6178 Fax: (505) 334-6170
District IV
1220 S. St. Francis Dr., Santa Fe, NM 87505
Phone: (505) 476-3460 Fax: (505) 476-3462

State of New Mexico
Energy, Minerals & Natural Resources
Department
OIL CONSERVATION DIVISION
1220 South St. Francis
Sante Fe, NM 87505

RECEIVED

FORM C-102

Revised August 1, 2011

Submit one copy to appropriate
District Office

MAY 16 2018

DISTRICT II-ARTESIA O.C.D.

☒ AMENDED REPORT

WELL LOCATION AND ACREAGE DEDICATION PLAT

As Drilled

¹ API Number 30-015-44144		² Pool Code 64010	³ Pool Name Welch, Bone Spring
⁴ Property Code 320082	⁵ Property Name PLUCKY 14 FED COM		⁶ Well Number #502H
⁷ OGRID No. 7377	⁸ Operator Name EOG Resources, Inc.		⁹ Elevation 3364'

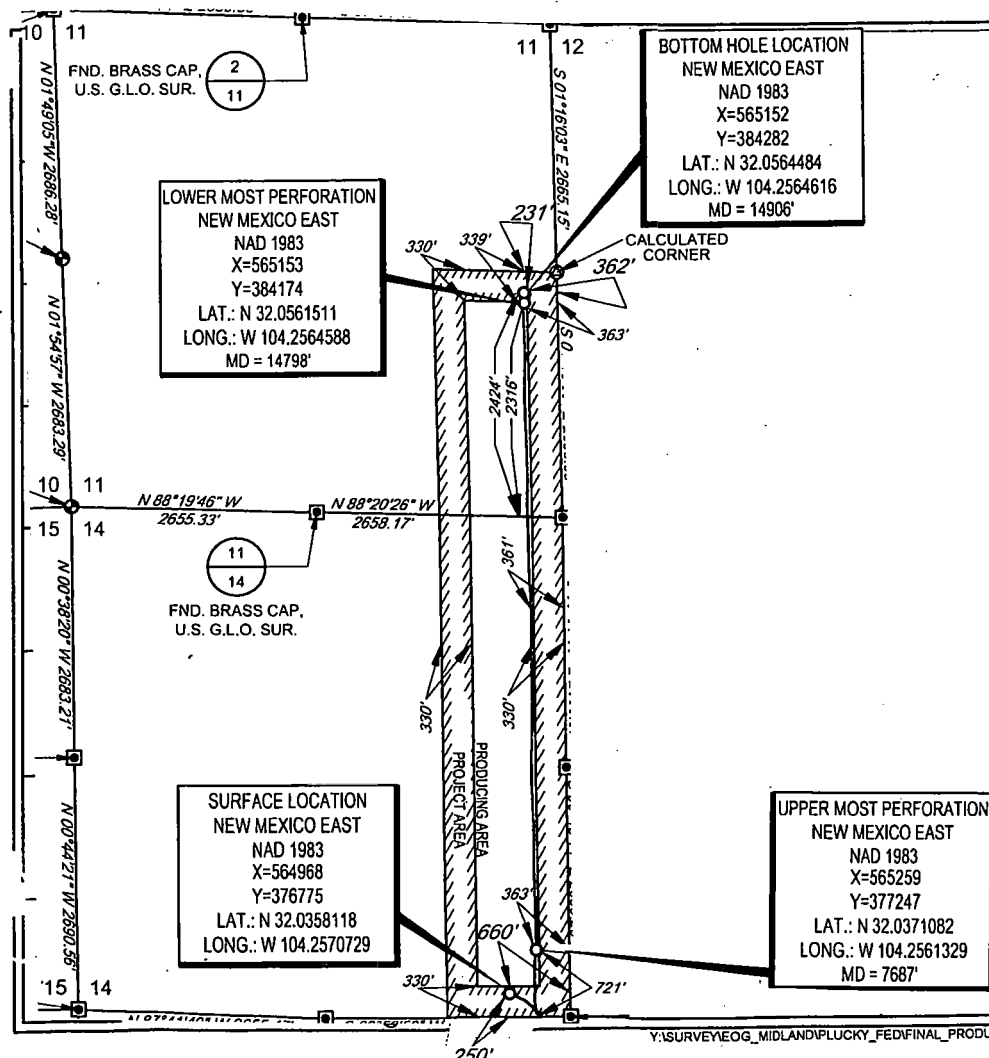
¹⁰Surface Location

UL or lot no.	Section	Township	Range	Lot Idn	Feet from the	North/South line	Feet from the	East/West line	County
P	14	26-S	26-E	-	250'	SOUTH	660'	EAST	EDDY

UL or lot no.	Section	Township	Range	Lot Idn	Feet from the	North/South line	Feet from the	East/West line	County
I	11	26-S	26-E	-	2424'	SOUTH	362'	EAST	EDDY

¹² Dedicated Acres 240.00	¹³ Joint or Infill	¹⁴ Consolidation Code	¹⁵ Order No.
---	-------------------------------	----------------------------------	-------------------------

No allowable will be assigned to this completion until all interests have been consolidated or a non-standard unit has been approved by the division.



¹⁷OPERATOR CERTIFICATION
I hereby certify that the information contained herein is true and complete to the best of my knowledge and belief, and that this organization either owns a working interest or unleased mineral interest in the land including the proposed bottom hole location or has a right to drill this well at this location pursuant to a contract with an owner of such a mineral or working interest, or to a voluntary pooling agreement or a compulsory pooling order heretofore entered by the division.

Signature: Kay Maddox
Date: 5/8/18

Printed Name: KAY MADDUX

E-mail Address:

¹⁸SURVEYOR CERTIFICATION
I hereby certify that the well location shown on this plat was plotted from field notes of actual surveys made by me or under my supervision, and that the same is true to the best of my belief.

Date of Survey: 05/11/2018
Signature and Title of Professional Surveyor: [Signature]
Certificate Number: 18329

SCALE: 1" = 2000'

0' 1000' 2000'

SECTION 14 TOWNSHIP 26-S, RANGE 26-E, N.M.P.M.
EDDY COUNTY, NEW MEXICO

POINT	UTM ZONE 13 COORDINATES
SHL	X=1870557.327 Y=11629394.119
UMP	X=1870845.286 Y=11629867.590
LMP	X=1870696.631 Y=11636792.272
BHL	X=1870695.030 Y=11636900.383

LOWER MOST PERFORATION
NEW MEXICO EAST
NAD 1983
X=565153
Y=384174
LAT.: N 32.0561511
LONG.: W 104.2564588
MD = 14798'

BOTTOM HOLE LOCATION
NEW MEXICO EAST
NAD 1983
X=565152
Y=384282
LAT.: N 32.0564484
LONG.: W 104.2564616
MD = 14906'

SURFACE LOCATION
NEW MEXICO EAST
NAD 1983
X=564968
Y=376775
LAT.: N 32.0358118
LONG.: W 104.2570729

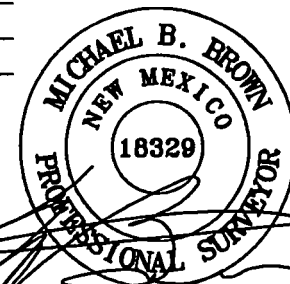
UPPER MOST PERFORATION
NEW MEXICO EAST
NAD 1983
X=565259
Y=377247
LAT.: N 32.0371082
LONG.: W 104.2561329
MD = 7687'

LEASE NAME & WELL NO.: PLUCKY 14 FED COM #502H
SECTION 14 TWP 26-S RGE 26-E SURVEY N.M.P.M.
COUNTY EDDY STATE NM ELEVATION 3364'
DESCRIPTION 250' FSL & 660' FEL



TOPOGRAPHIC
LOYALTY INNOVATION LEGACY

1400 EVERMAN PARKWAY, Ste. 146 • FT. WORTH, TEXAS 76140
TELEPHONE: (817) 744-7512 • FAX (817) 744-7548
2903 NORTH BIG SPRING • MIDLAND, TEXAS 79705
TELEPHONE: (432) 682-1653 OR (800) 767-1653 • FAX (432) 682-1743
WWW.TOPOGRAPHIC.COM



Michael Blake Brown, P.S. No. 18329
APRIL 23, 2018

eo resources, inc.

PLUCKY 14 FED COM
#502H AS-COMPLETE

REVISION:

INT DATE

DATE: 4/20/18

FILE:AD_PLUCKY14FEDCOM_502H

DRAWN BY: H.B.

SHEET: 1 OF 1

NOTES:

1. ORIGINAL DOCUMENT SIZE: 8.5" X 11"
2. ALL BEARINGS, DISTANCES, AND COORDINATE VALUES CONTAINED HEREIN ARE GRID BASED UPON THE NEW MEXICO COORDINATE SYSTEM, EAST ZONE, U.S. SURVEY FEET, NORTH AMERICAN DATUM 1983.
3. THIS WELL LOCATION SHOWN HEREON HAS BEEN SURVEYED ON THE GROUND UNDER MY SUPERVISION AND PREPARED ACCORDING TO THE EVIDENCE FOUND AT THE TIME OF SURVEY, AND DATA PROVIDED BY EOG RESOURCES, INC. THIS CERTIFICATION IS MADE AND LIMITED TO THOSE PERSONS OR ENTITIES SHOWN ON THE FACE OF THIS PLAT AND IS NON-TRANSFERABLE. THIS SURVEY IS CERTIFIED FOR THIS TRANSACTION ONLY.

10-11-12

