

District I
1625 N. French Dr., Hobbs, NM 88240
Phone: (575) 393-6161 Fax: (575) 393-0720
District II
811 S. First St., Artesia, NM 88210
Phone: (575) 748-1283 Fax: (575) 748-9720
District III
1000 Rio Brazos Road, Aztec, NM 87410
Phone: (505) 334-6178 Fax: (505) 334-6170
District IV
1220 S. St. Francis Dr., Santa Fe, NM 87505
Phone: (505) 476-3460 Fax: (505) 476-3462

State of New Mexico **NM OIL CONSERVATION**
Energy, Minerals & Natural Resources **ARTESIA DISTRICT**
Department
OIL CONSERVATION DIVISION
1220 South St. Francis Dr.
Santa Fe, NM 87505

FORM C-102
Revised August 1, 2011
Submit one copy to appropriate
District Office

MAY 16 2018

RECEIVED

AMENDED REPORT

WELL LOCATION AND ACREAGE DEDICATION PLAT

As Drilled

¹ API Number 30-015- 44291	² Pool Code 98239	³ Pool Name WC-015 G03 S192703I; BONE SPRING
⁴ Property Code 318324	⁵ Property Name SECRETARIAT 3 FED COM	
⁷ GRID No. 7377	⁸ Operator Name EOG RESOURCES, INC.	⁶ Well Number #501H
		⁹ Elevation 3460'

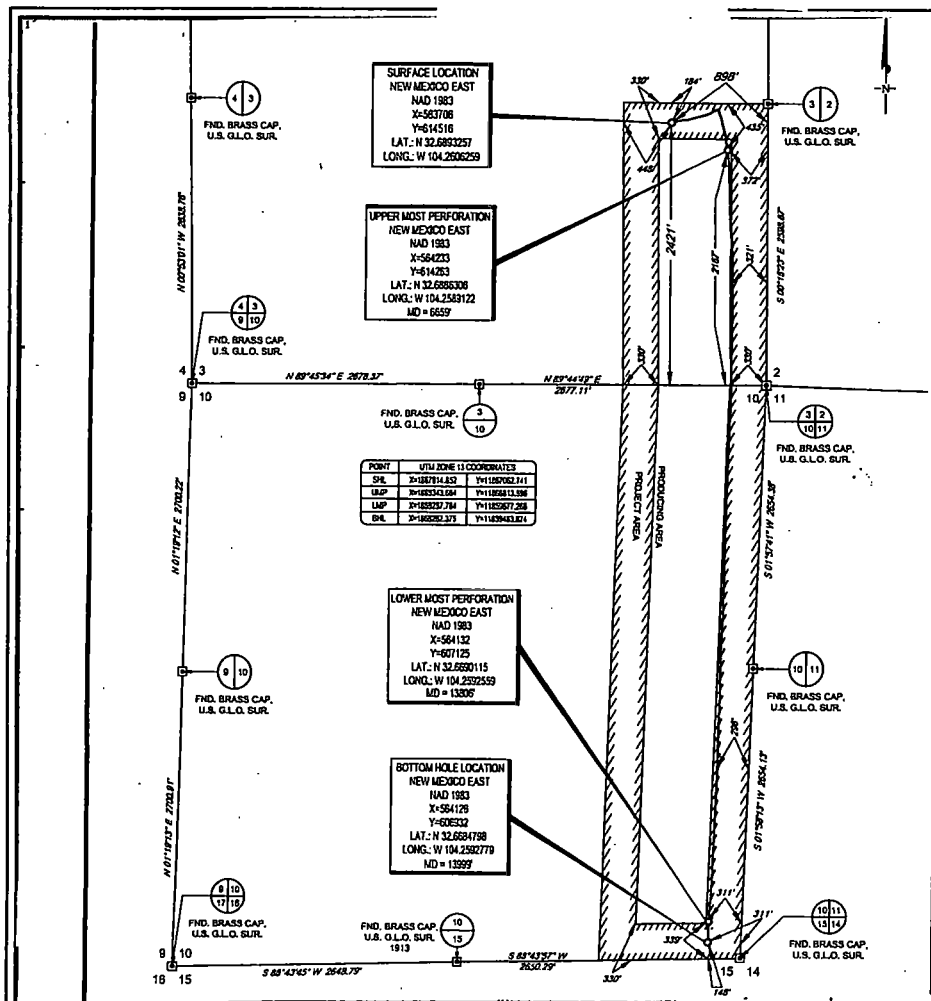
¹⁰Surface Location

UL or lot no.	Section	Township	Range	Lot Idn	Feet from the	North/South line	Feet from the	East/West line	County
I	3	19-S	27-E	-	2421'	SOUTH	898'	EAST	EDDY

UL or lot no.	Section	Township	Range	Lot Idn	Feet from the	North/South line	Feet from the	East/West line	County
P	10	19-S	27-E	-	146'	SOUTH	311'	EAST	EDDY

¹² Dedicated Acres 240.00	¹³ Joint or Infill	¹⁴ Consolidation Code	¹⁵ Order No.
---	-------------------------------	----------------------------------	-------------------------

No allowable will be assigned to this completion until all interests have been consolidated or a non-standard unit has been approved by the division.



¹⁷OPERATOR CERTIFICATION

I hereby certify that the information contained herein is true and complete to the best of my knowledge and belief, and that this organization either owns a working interest or unleased mineral interest in the land including the proposed bottom hole location or has a right to drill this well at this location pursuant to a contract with an owner of such a mineral or working interest, or to a voluntary pooling agreement or a compulsory pooling order heretofore entered by the division.

Signature Kay Maddox Date 4/19/2018

Printed Name KAY MADDUX

E-mail Address

¹⁸SURVEYOR CERTIFICATION

I hereby certify that the well location shown on this plat was plotted from field notes of actual surveys made by me or under my supervision, and that the same is true to the best of my belief.

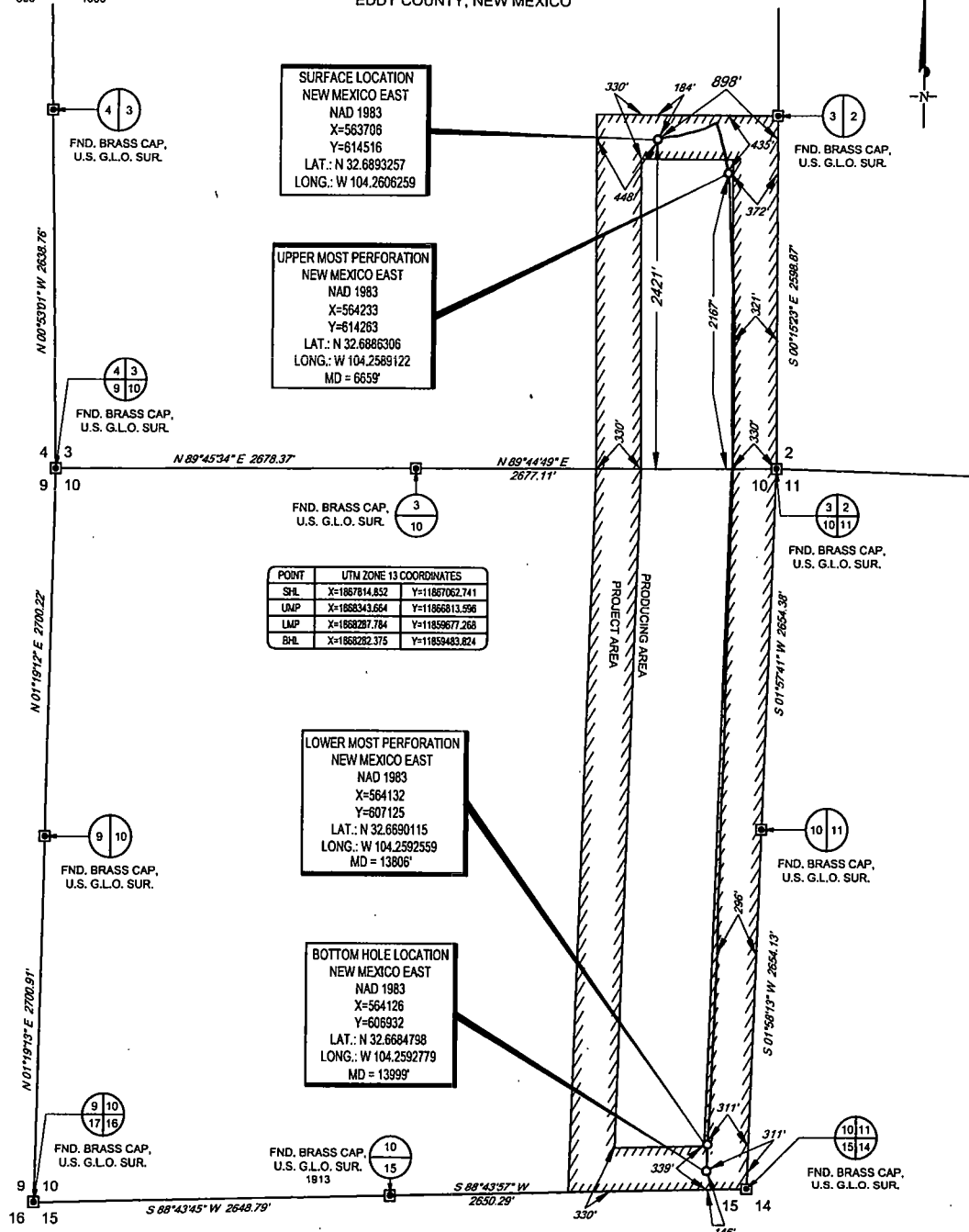
Date of Survey 4/19/2018
Signature and Seal of Professional Surveyor

MECHER BROWN
NEW MEXICO
18329
PROFESSIONAL SURVEYOR

Certificate Number

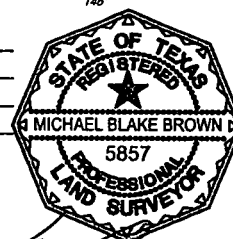
SCALE: 1" = 1000'
0' 500' 1000'

SECTIONS 3 & 10, TOWNSHIP 19-S, RANGE 27-E, N.M.P.M.
EDDY COUNTY, NEW MEXICO



POINT	UTM ZONE 13 COORDINATES
SHL	X=1867614.832 Y=11867062.741
LMP	X=1868343.664 Y=11866613.596
LMP	X=1868287.784 Y=11859677.268
BHL	X=1868282.375 Y=11859483.824

LEASE NAME & WELL NO.: SECRETARIAT 3 FED COM #501H
SECTION 3 TWP 19-S RGE 27-E SURVEY N.M.P.M.
COUNTY EDDY STATE NM ELEVATION 3460'
DESCRIPTION 2421' FSL & 898' FEL



TOPOGRAPHIC
LOYALTY INNOVATION LEGACY
1400 EVERMAN PARKWAY, Ste. 146 • FT. WORTH, TEXAS 76140
TELEPHONE: (817) 744-7512 • FAX (817) 744-7554
2903 NORTH BIG SPRING • MIDLAND, TEXAS 79705
TELEPHONE: (432) 682-1653 OR (800) 787-1653 • FAX (432) 682-1743
WWW.TOPOGRAPHIC.COM

Geog resources, Inc.

Michael Blake Brown, P.S. No. 18329
APRIL 10, 2018

SECRETARIAT 3 FED COM #501H AS-COMPLETED	REVISION:
DATE: 04/10/18	
FILE: AD_SECRETARIAT_3_FED_COM_501H_NAD83	
DRAWN BY: A.M.D.	
SHEET: 1 OF 1	

NOTES:
1. ORIGINAL DOCUMENT SIZE: 8.5" X 14"
2. ALL BEARINGS, DISTANCES, AND COORDINATE VALUES CONTAINED HEREIN ARE GRID BASED UPON THE NEW MEXICO COORDINATE SYSTEM OF 1983, EAST ZONE, U.S. SURVEY FEET.
3. THIS WELL LOCATION SHOWN HEREON HAS BEEN SURVEYED ON THE GROUND UNDER MY SUPERVISION AND PREPARED ACCORDING TO THE EVIDENCE FOUND AT THE TIME OF SURVEY, AND DATA PROVIDED BY EOG RESOURCES, INC. THIS CERTIFICATION IS MADE AND LIMITED TO THOSE PERSONS OR ENTITIES SHOWN ON THE FACE OF THIS PLAT AND IS NON-TRANSFERABLE. THIS SURVEY IS CERTIFIED FOR THIS TRANSACTION ONLY.