

UNITED STATES  
DEPARTMENT OF THE INTERIOR  
BUREAU OF LAND MANAGEMENT

OCD Artesia

FORM APPROVED  
OMB NO. 1004-0137  
Expires: January 31, 2018**SUNDRY NOTICES AND REPORTS ON WELLS**  
*Do not use this form for proposals to drill or to re-enter an abandoned well. Use form 3160-3 (APD) for such proposals.*5. Lease Serial No.  
NMNM100558

6. If Indian, Allottee or Tribe Name

**SUBMIT IN TRIPLICATE - Other instructions on page 2**7. If Unit or CA/Agreement, Name and/or No.  
NMNM137692

1. Type of Well

☐ Oil Well ☐ Gas Well ☒ Other: UNKNOWN OTH8. Well Name and No.  
TUCKER DRAW 9-4 FED COM 3H2. Name of Operator  
RKI EXPLORATION & PROD LLCContact: JESSICA DEMARCE  
E-Mail: Jessica.demarce@wpenergy.com9. API Well No.  
30-015-44486-00-X13a. Address  
3500 ONE WILLIAMS CENTER MD 35  
TULSA, OK 741723b. Phone No. (include area code)  
Ph: 539-573-352110. Field and Pool or Exploratory Area  
PURPLE SAGE-WOLFCAMP (GAS)

4. Location of Well (Footage, Sec., T., R., M., or Survey Description)

Sec 16 T26S R30E NWNE 250FNL 1413FEL  
32.049210 N Lat, 103.882233 W Lon11. County or Parish, State  
EDDY COUNTY, NM

## 12. CHECK THE APPROPRIATE BOX(ES) TO INDICATE NATURE OF NOTICE, REPORT, OR OTHER DATA

TYPE OF SUBMISSION	TYPE OF ACTION			
<input type="checkbox"/> Notice of Intent	<input type="checkbox"/> Acidize	<input type="checkbox"/> Deepen	<input type="checkbox"/> Production (Start/Resume)	<input type="checkbox"/> Water Shut-Off
<input checked="" type="checkbox"/> Subsequent Report	<input type="checkbox"/> Alter Casing	<input type="checkbox"/> Hydraulic Fracturing	<input type="checkbox"/> Reclamation	<input type="checkbox"/> Well Integrity
<input type="checkbox"/> Final Abandonment Notice	<input type="checkbox"/> Casing Repair	<input type="checkbox"/> New Construction	<input type="checkbox"/> Recomplete	<input type="checkbox"/> Other
	<input type="checkbox"/> Change Plans	<input type="checkbox"/> Plug and Abandon	<input type="checkbox"/> Temporarily Abandon	
	<input type="checkbox"/> Convert to Injection	<input type="checkbox"/> Plug Back	<input checked="" type="checkbox"/> Water Disposal	

13. Describe Proposed or Completed Operation: Clearly state all pertinent details, including estimated starting date of any proposed work and approximate duration thereof. If the proposal is to deepen directionally or recompleat horizontally, give subsurface locations and measured and true vertical depths of all pertinent markers and zones. Attach the Bond under which the work will be performed or provide the Bond No. on file with BLM/BIA. Required subsequent reports must be filed within 30 days following completion of the involved operations. If the operation results in a multiple completion or recompleat in a new interval, a Form 3160-4 must be filed : testing has been completed. Final Abandonment Notices must be filed only after all requirements, including reclamation, have been completed and the operator has determined that the site is ready for final inspection.

RKI EXPLORATION and PRODUCTION LLC Requests to dispose of produced water for the above mentioned well in the locations below:

Producing Formation: Wolfcamp  
Amount of water production per day: 2700 bbls max/1650 bbls avg  
Onsite storage: (4) 500 bbl water tanks  
Transport method and company: Pipeline ? Stateline Water, LLC  
Water facility operator: RKI EXPLORATION & PRODUCTION LLC  
Name of facility/SWD: STATELINE SWD 2-1  
Location of facility/SWD: Sec 2 Blk 56 T1, 417? North, 467? West  
Permit Number for facility/SWD: W14# 14063  
API: 42-301-31961

GC 6-14-18  
Accepted for record - NMOC

DISTRICT II-ARTESIA O.G.D.

ACCEPTED FOR RECORD

JUN - 6 2018

BUREAU OF LAND MANAGEMENT  
CARLSBAD FIELD OFFICE

14. I hereby certify that the foregoing is true and correct.

Electronic Submission #421726 verified by the BLM Well Information System  
For RKI EXPLORATION & PROD LLC, sent to the Carlsbad  
Committed to AFMS for processing by DEBORAH MCKINNEY on 05/30/2018 (18DLM0322SE)

Name (Printed/Typed) JESSICA DEMARCE

Title REGULATORY TECH

Signature (Electronic Submission)

Date 05/29/2018

## THIS SPACE FOR FEDERAL OR STATE OFFICE USE

Approved By

Title

Date

Conditions of approval, if any, are attached. Approval of this notice does not warrant or certify that the applicant holds legal or equitable title to those rights in the subject lease which would entitle the applicant to conduct operations thereon.

Office

Title 18 U.S.C. Section 1001 and Title 43 U.S.C. Section 1212, make it a crime for any person knowingly and willfully to make to any department or agency of the United States any false, fictitious or fraudulent statements or representations as to any matter within its jurisdiction.

(Instructions on page 2)

\*\* BLM REVISED \*\* BLM REVISED \*\* BLM REVISED \*\* BLM REVISED \*\* BLM REVISED \*\*

**Additional data for EC transaction #421726 that would not fit on the form**

**32. Additional remarks, continued**

UIC: 000107340

Other locations if primary disposal is down

--SEE NEXT PAGE(S)--

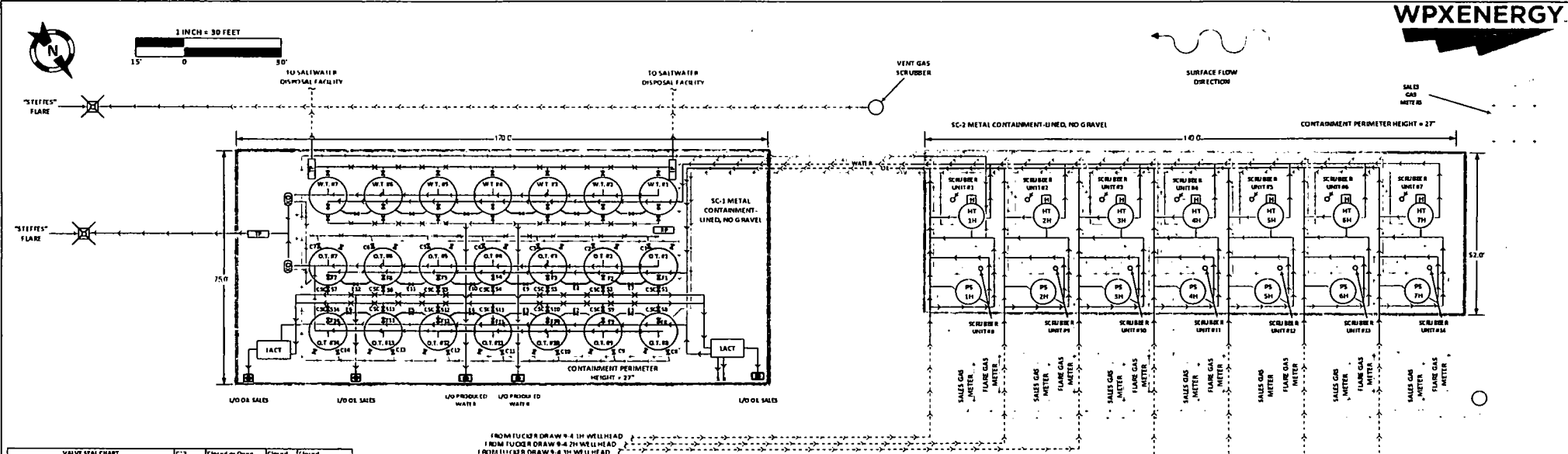
operator: RKI EXPLORATION & PRODUCTION LLC  
Name of facility/SWD: DAMSITE UNIT 1  
Location of facility/SWD: Sec 9 Blk 56 T1, 1320? North, 1320? North  
Permit Number for facility/SWD: W14# 13129  
API: 42-301-30047  
UIC: 000102256

Water facility operator: RKI EXPLORATION & PRODUCTION LLC  
Name of facility/SWD: RED BLUFF DEEP 1D  
Location of facility/SWD: Sec 2 Blk 56 T1, 467? North, 467? East  
Permit Number for facility/SWD: W14# 13995  
API: 42-301-30225  
UIC: 000102257

Water facility operator: RKI EXPLORATION & PRODUCTION LLC  
Name of facility/SWD: RED BLUFF 8-1  
Location of facility/SWD: Sec 2 Blk 56 T1, 467? North, 467? East  
Permit Number for facility/SWD: W14# 13995  
API: 42-301-30294  
UIC: 000100957

Water facility operator: RKI EXPLORATION & PRODUCTION LLC  
Name of facility/SWD: RED BLUFF 8-2D  
Location of facility/SWD: Sec 2 Blk 56 T1, 467? North, 467? East  
Permit Number for facility/SWD: W14# 13995  
API: 42-301-30333  
UIC: 000101482

A Current Site Facility Diagram is Attached



VALVE SEAL CHART												
Valve	Production Phase	Valves Phase	Recrafting	C13	C14	C15	C16	C17	C18	C19	C20	C21
1	Closed	Open	Closed	C1	Closed or Open	Closed	Closed	Closed	Closed	Closed	Closed	Closed
2	Closed	Open	Closed	C2	Closed or Open	Closed	Closed	Closed	Closed	Closed	Closed	Closed or Open
3	Closed	Open	Closed	C3	Closed or Open	Closed	Closed	Closed	Closed	Closed	Closed	Closed or Open
4	Closed	Open	Closed	C4	Closed or Open	Closed	Closed	Closed	Closed	Closed	Closed	Closed or Open
5	Closed	Open	Closed	C5	Closed or Open	Closed	Closed	Closed	Closed	Closed	Closed	Closed or Open
6	Closed	Open	Closed	C6	Closed or Open	Closed	Closed	Closed	Closed	Closed	Closed	Closed or Open
7	Closed	Open	Closed	C7	Closed or Open	Closed	Closed	Closed	Closed	Closed	Closed	Closed or Open
8	Closed	Open	Closed	C8	Closed or Open	Closed	Closed	Closed	Closed	Closed	Closed	Closed or Open
9	Closed	Open	Closed	C9	Closed or Open	Closed	Closed	Closed	Closed	Closed	Closed	Closed or Open
10	Closed	Open	Closed	C10	Closed or Open	Closed	Closed	Closed	Closed	Closed	Closed	Closed or Open
11	Closed	Open	Closed	C11	Closed or Open	Closed	Closed	Closed	Closed	Closed	Closed	Closed or Open
12	Closed	Open	Closed	C12	Closed or Open	Closed	Closed	Closed	Closed	Closed	Closed	Closed or Open
13	Closed	Open	Closed	C13	Closed or Open	Closed	Closed	Closed	Closed	Closed	Closed	Closed or Open
14	Closed	Open	Closed	C14	Closed or Open	Closed	Closed	Closed	Closed	Closed	Closed	Closed or Open
15	Closed	Open	Closed	C15	Closed or Open	Closed	Closed	Closed	Closed	Closed	Closed	Closed or Open
16	Closed	Open	Closed	C16	Closed or Open	Closed	Closed	Closed	Closed	Closed	Closed	Closed or Open
17	Closed	Open	Closed	C17	Closed or Open	Closed	Closed	Closed	Closed	Closed	Closed	Closed or Open
18	Closed	Open	Closed	C18	Closed or Open	Closed	Closed	Closed	Closed	Closed	Closed	Closed or Open
19	Closed	Open	Closed	C19	Closed or Open	Closed	Closed	Closed	Closed	Closed	Closed	Closed or Open
20	Closed	Open	Closed	C20	Closed or Open	Closed	Closed	Closed	Closed	Closed	Closed	Closed or Open
21	Closed or Open	Closed	Closed	C21	Closed or Open	Closed	Closed	Closed	Closed	Closed	Closed	Closed
22	Closed or Open	Closed	Closed	C22	Closed or Open	Closed	Closed	Closed	Closed	Closed	Closed	Closed
23	Closed or Open	Closed	Closed	C23	Closed or Open	Closed	Closed	Closed	Closed	Closed	Closed	Closed
24	Closed or Open	Closed	Closed	C24	Closed or Open	Closed	Closed	Closed	Closed	Closed	Closed	Closed
25	Closed or Open	Closed	Closed	C25	Closed or Open	Closed	Closed	Closed	Closed	Closed	Closed	Closed
26	Closed or Open	Closed	Closed	C26	Closed or Open	Closed	Closed	Closed	Closed	Closed	Closed	Closed
27	Closed or Open	Closed	Closed	C27	Closed or Open	Closed	Closed	Closed	Closed	Closed	Closed	Closed
28	Closed or Open	Closed	Closed	C28	Closed or Open	Closed	Closed	Closed	Closed	Closed	Closed	Closed
29	Closed or Open	Closed	Closed	C29	Closed or Open	Closed	Closed	Closed	Closed	Closed	Closed	Closed
30	Closed or Open	Closed	Closed	C30	Closed or Open	Closed	Closed	Closed	Closed	Closed	Closed	Closed
31	Closed or Open	Closed	Closed	C31	Closed or Open	Closed	Closed	Closed	Closed	Closed	Closed	Closed
32	Closed or Open	Closed	Closed	C32	Closed or Open	Closed	Closed	Closed	Closed	Closed	Closed	Closed
33	Closed or Open	Closed	Closed	C33	Closed or Open	Closed	Closed	Closed	Closed	Closed	Closed	Closed
34	Closed or Open	Closed	Closed	C34	Closed or Open	Closed	Closed	Closed	Closed	Closed	Closed	Closed
35	Closed or Open	Closed	Closed	C35	Closed or Open	Closed	Closed	Closed	Closed	Closed	Closed	Closed
36	Closed or Open	Closed	Closed	C36	Closed or Open	Closed	Closed	Closed	Closed	Closed	Closed	Closed
37	Closed or Open	Closed	Closed	C37	Closed or Open	Closed	Closed	Closed	Closed	Closed	Closed	Closed
38	Closed or Open	Closed	Closed	C38	Closed or Open	Closed	Closed	Closed	Closed	Closed	Closed	Closed
39	Closed or Open	Closed	Closed	C39	Closed or Open	Closed	Closed	Closed	Closed	Closed	Closed	Closed
40	Closed or Open	Closed	Closed	C40	Closed or Open	Closed	Closed	Closed	Closed	Closed	Closed	Closed
41	Closed or Open	Closed	Closed	C41	Closed or Open	Closed	Closed	Closed	Closed	Closed	Closed	Closed
42	Closed or Open	Closed	Closed	C42	Closed or Open	Closed	Closed	Closed	Closed	Closed	Closed	Closed
43	Closed or Open	Closed	Closed	C43	Closed or Open	Closed	Closed	Closed	Closed	Closed	Closed	Closed
44	Closed or Open	Closed	Closed	C44	Closed or Open	Closed	Closed	Closed	Closed	Closed	Closed	Closed
45	Closed or Open	Closed	Closed	C45	Closed or Open	Closed	Closed	Closed	Closed	Closed	Closed	Closed
46	Closed or Open	Closed	Closed	C46	Closed or Open	Closed	Closed	Closed	Closed	Closed	Closed	Closed
47	Closed or Open	Closed	Closed	C47	Closed or Open	Closed	Closed	Closed	Closed	Closed	Closed	Closed
48	Closed or Open	Closed	Closed	C48	Closed or Open	Closed	Closed	Closed	Closed	Closed	Closed	Closed
49	Closed or Open	Closed	Closed	C49	Closed or Open	Closed	Closed	Closed	Closed	Closed	Closed	Closed
50	Closed or Open	Closed	Closed	C50	Closed or Open	Closed	Closed	Closed	Closed	Closed	Closed	Closed
51	Closed or Open	Closed	Closed	C51	Closed or Open	Closed	Closed	Closed	Closed	Closed	Closed	Closed
52	Closed or Open	Closed	Closed	C52	Closed or Open	Closed	Closed	Closed	Closed	Closed	Closed	Closed
53	Closed or Open	Closed	Closed	C53	Closed or Open	Closed	Closed	Closed	Closed	Closed	Closed	Closed
54	Closed or Open	Closed	Closed	C54	Closed or Open	Closed	Closed	Closed	Closed	Closed	Closed	Closed
55	Closed or Open	Closed	Closed	C55	Closed or Open	Closed	Closed	Closed	Closed	Closed	Closed	Closed
56	Closed or Open	Closed	Closed	C56	Closed or Open	Closed	Closed	Closed	Closed	Closed	Closed	Closed
57	Closed or Open	Closed	Closed	C57	Closed or Open	Closed	Closed	Closed	Closed	Closed	Closed	Closed
58	Closed or Open	Closed	Closed	C58	Closed or Open	Closed	Closed	Closed	Closed	Closed	Closed	Closed
59	Closed or Open	Closed	Closed	C59	Closed or Open	Closed	Closed	Closed	Closed	Closed	Closed	Closed
60	Closed or Open	Closed	Closed	C60	Closed or Open	Closed	Closed	Closed	Closed	Closed	Closed	Closed
61	Closed or Open	Closed	Closed	C61	Closed or Open	Closed	Closed	Closed	Closed	Closed	Closed	Closed
62	Closed or Open	Closed	Closed	C62	Closed or Open	Closed	Closed	Closed	Closed	Closed	Closed	Closed
63	Closed or Open	Closed	Closed	C63	Closed or Open	Closed	Closed	Closed	Closed	Closed	Closed	Closed
64	Closed or Open	Closed	Closed	C64	Closed or Open	Closed	Closed	Closed	Closed	Closed	Closed	Closed
65	Closed or Open	Closed	Closed	C65	Closed or Open	Closed	Closed	Closed	Closed	Closed	Closed	Closed
66	Closed or Open	Closed	Closed	C66	Closed or Open	Closed	Closed	Closed	Closed	Closed	Closed	Closed
67	Closed or Open	Closed	Closed	C67	Closed or Open	Closed	Closed	Closed	Closed	Closed	Closed	Closed
68	Closed or Open	Closed	Closed	C68	Closed or Open	Closed	Closed	Closed	Closed	Closed	Closed	Closed
69	Closed or Open	Closed	Closed	C69	Closed or Open	Closed	Closed	Closed	Closed	Closed	Closed	Closed
70	Closed or Open	Closed	Closed	C70	Closed or Open	Closed	Closed	Closed	Closed	Closed	Closed	Closed
71	Closed or Open	Closed	Closed	C71	Closed or Open	Closed	Closed	Closed	Closed	Closed	Closed	Closed
72	Closed or Open	Closed	Closed	C72	Closed or Open	Closed	Closed	Closed	Closed	Closed	Closed	Closed
73	Closed or Open	Closed	Closed	C73	Closed or Open	Closed	Closed	Closed	Closed	Closed	Closed	Closed
74	Closed or Open	Closed	Closed	C74	Closed or Open	Closed	Closed	Closed	Closed	Closed	Closed	Closed
75	Closed or Open	Closed	Closed	C75	Closed or Open	Closed	Closed	Closed	Closed	Closed	Closed	Closed
76	Closed or Open	Closed	Closed	C76	Closed or Open	Closed	Closed	Closed	Closed	Closed	Closed	Closed
77	Closed or Open	Closed	Closed	C77	Closed or Open	Closed	Closed	Closed	Closed	Closed	Closed	Closed
78	Closed or Open	Closed	Closed	C78	Closed or Open	Closed	Closed	Closed	Closed	Closed	Closed	Closed
79	Closed or Open	Closed	Closed	C79	Closed or Open	Closed	Closed	Closed	Closed	Closed	Closed	Closed
80	Closed or Open	Closed	Closed	C80	Closed or Open	Closed	Closed	Closed	Closed	Closed	Closed	Closed
81	Closed or Open	Closed	Closed	C81	Closed or Open	Closed	Closed	Closed	Closed	Closed	Closed	Closed
82	Closed or Open	Closed	Closed	C82	Closed or Open	Closed	Closed	Closed	Closed	Closed	Closed	Closed
83	Closed or Open	Closed	Closed	C83	Closed or Open	Closed	Closed	Closed	Closed	Closed	Closed	Closed
84	Closed or Open	Closed	Closed	C84	Closed or Open	Closed	Closed	Closed	Closed	Closed	Closed	Closed
85	Closed or Open	Closed	Closed	C85	Closed or Open	Closed	Closed	Closed	Closed	Closed	Closed	Closed
86	Closed or Open	Closed	Closed	C86	Closed or Open	Closed	Closed	Closed	Closed	Closed	Closed	Closed
87	Closed or Open	Closed	Closed	C87	Closed or Open	Closed	Closed	Closed	Closed	Closed	Closed	Closed
88	Closed or Open	Closed	Closed	C88	Closed or Open	Closed	Closed	Closed	Closed	Closed	Closed	Closed
89	Closed or Open	Closed	Closed	C89	Closed or Open	Closed	Closed	Closed	Closed	Closed	Closed	Closed
90	Closed or Open	Closed	Closed	C90	Closed or Open	Closed	Closed	Closed	Closed	Closed	Closed	Closed
91	Closed or Open	Closed	Closed	C91	Closed or Open	Closed	Closed	Closed	Closed	Closed	Closed	Closed
92	Closed or Open	Closed	Closed	C92	Closed or Open	Closed	Closed	Closed	Closed	Closed	Closed	Closed
93	Closed or Open	Closed	Closed	C93	Closed or Open	Closed	Closed	Closed	Closed	Closed	Closed	Closed
94	Closed or Open	Closed	Closed	C94	Closed or Open	Closed	Closed	Closed	Closed	Closed	Closed	Closed
95	Closed or Open	Closed	Closed	C95	Closed or Open	Closed	Closed	Closed	Closed	Closed	Closed	Closed
96	Closed or Open	Closed	Closed	C96	Closed or Open	Closed	Closed	Closed	Closed	Closed	Closed	Closed
97	Closed or Open	Closed	Closed	C97	Closed or Open	Closed	Closed	Closed	Closed	Closed	Closed	Closed
98	Closed or Open	Closed	Closed	C98	Closed or Open	Closed	Closed	Closed	Closed	Closed	Closed	Closed
99	Closed or Open	Closed	Closed	C99	Closed or Open	Closed	Closed	Closed	Closed	Closed	Closed	Closed
100	Closed or Open	Closed	Closed	C100	Closed or Open	Closed	Closed	Closed	Closed	Closed	Closed	Closed

**BUREAU OF LAND MANAGEMENT**  
**Carlsbad Field Office**  
**620 East Greene Street**  
**Carlsbad, New Mexico 88220**  
**575-234-5972**

**Disposal of Produced Water From Federal Wells**  
**Conditions of Approval**

Approval of the produced water disposal methodology is subject to the following conditions of approval:

1. This agency shall be notified of any change in your method or location of disposal.
2. Compliance with all provisions of Onshore Order No. 7.
3. This agency shall be notified of any spill or discharge as required by NTL-3A.
4. This agency reserves the right to modify or rescind approval whenever it determines continued use of the approved method may adversely affect the surface or subsurface environments.
5. Any on-lease open top storage tanks shall be covered with a protective cover to prevent entry by birds and other wildlife.
6. This approval should not constitute the granting of any right-of-way or construction rights not granted by the lease instrument.
7. If water is transported via a pipeline that extends beyond the lease boundary, then you need to submit within 30 days an application for right-of-way approval to the Realty Section in this office if you have not already done so.
8. Disposal at any other site will require prior approval.
9. Subject to like approval by NMOCD

4/4/2017