

District I
1625 N. French Dr., Hobbs, NM 88240
Phone: (575) 393-6161 Fax: (575) 393-0720
District II
811 S. First St., Artesia, NM 88210
Phone: (575) 748-1283 Fax: (575) 748-9720
District III
1000 Rio Brazos Road, Aztec, NM 87410
Phone: (505) 334-6178 Fax: (505) 334-6170
District IV
1220 S. St. Francis Dr., Santa Fe, NM 87505
Phone: (505) 476-3460 Fax: (505) 476-3462

State of New Mexico
Energy, Minerals & Natural Resources Department
OIL CONSERVATION DIVISION
1220 South St. Francis Dr.
Santa Fe, NM 87505

NM OIL CONSERVATION
ARTESIA DISTRICT

Form C-102

Revised August 1, 2011

JUN 14 2018
Supplement one copy to appropriate
District Office

RECEIVED AMENDED REPORT

WELL LOCATION AND ACREAGE DEDICATION PLAT

¹ API Number 30-015- 45040		² Pool Code 65010	³ Pool Name WINCHESTER; BONE SPRING
⁴ Property Code 321281	⁵ Property Name PALMILLO 26 STATE COM		⁶ Well Number 213H
⁷ GRID NO. 873	⁸ Operator Name APACHE CORPORATION		⁹ Elevation 3358'

¹⁰ Surface Location

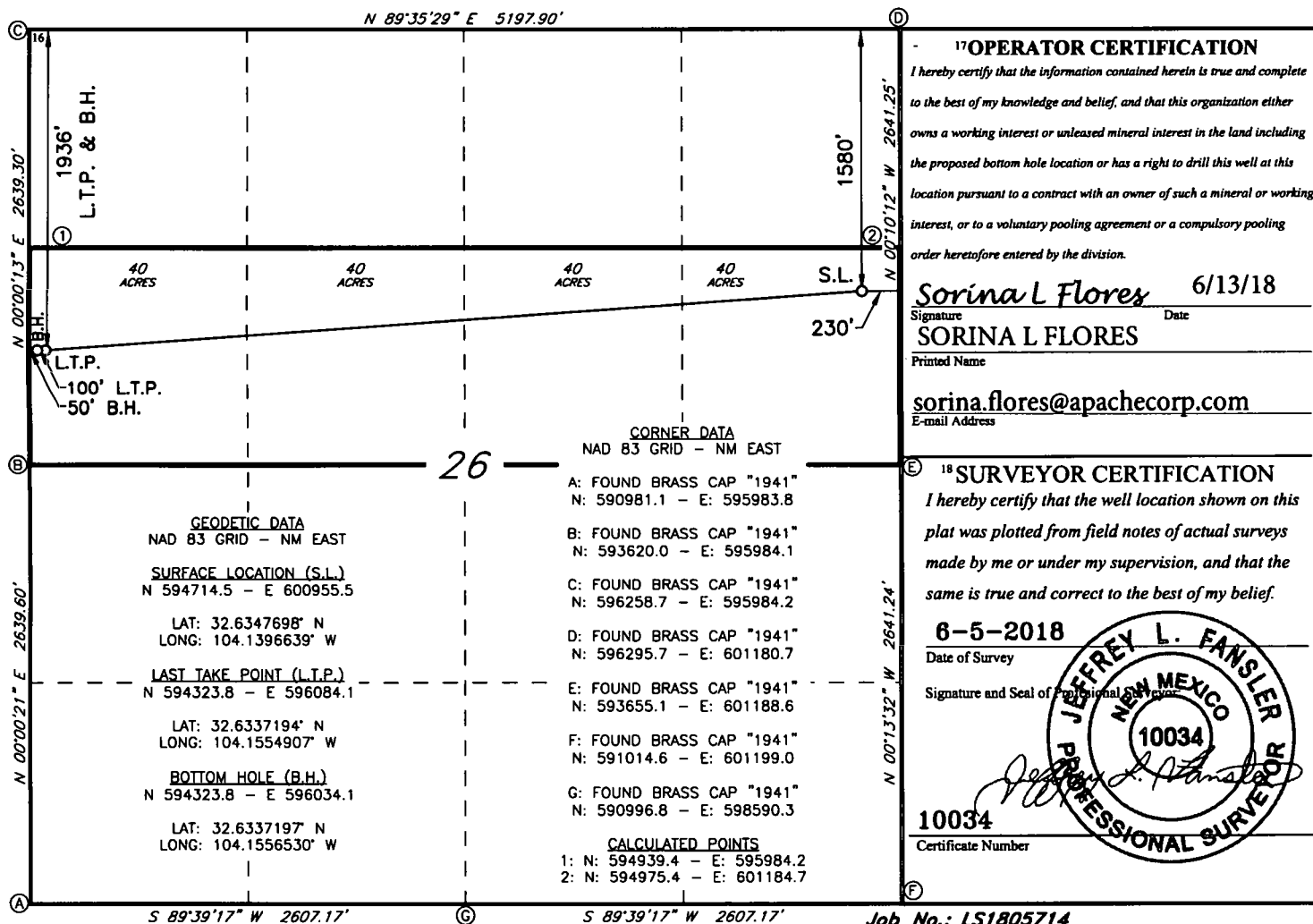
UL or lot no.	Section	Township	Range	Lot Idn	Feet from the	North/South line	Feet From the	East/West line	County
H	26	19S	28E		1580	NORTH	230	EAST	EDDY

¹¹ Bottom Hole Location If Different From Surface

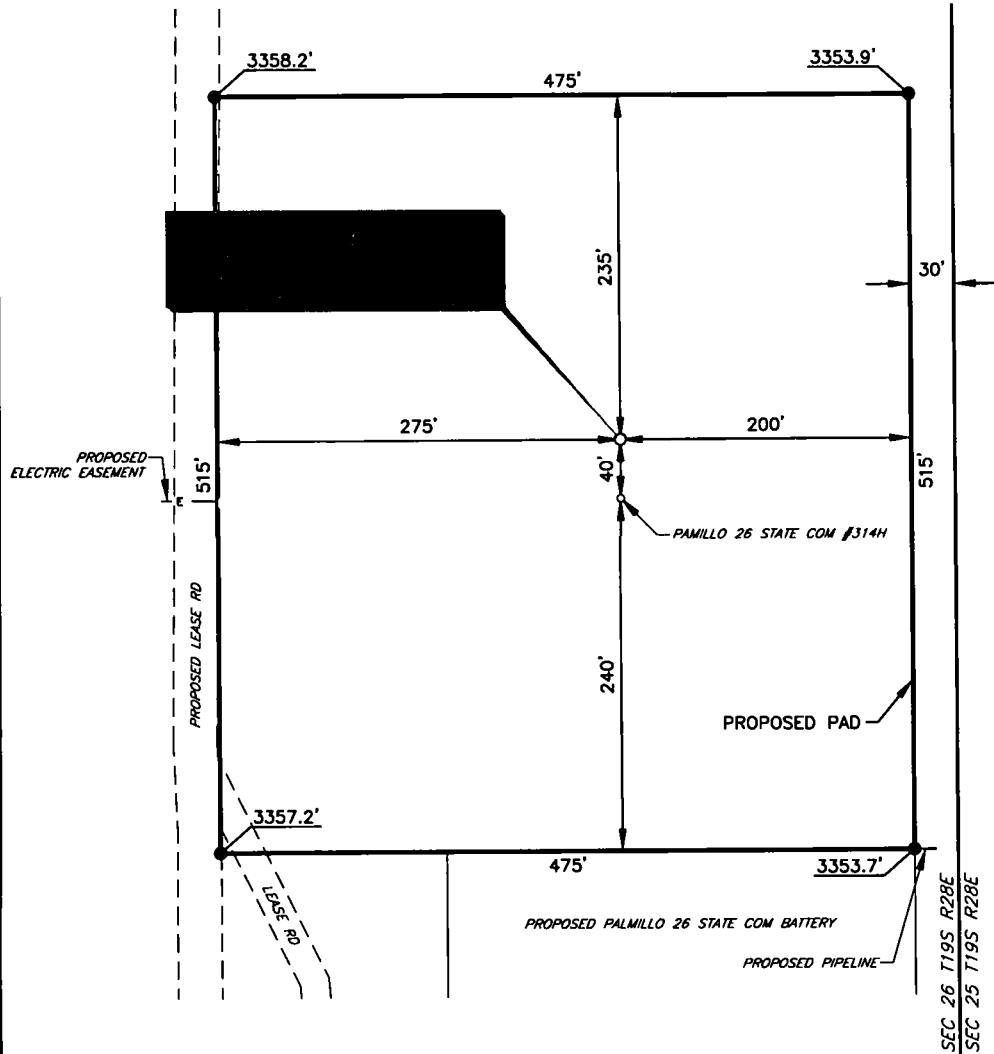
UL or lot no.	Section	Township	Range	Lot Idn	Feet from the	North/South line	Feet from the	East/West line	County
E	26	19S	28E		1936	NORTH	50	WEST	EDDY

¹² Dedicated Acres 160	¹³ Joint or Infill	¹⁴ Consolidation Code	¹⁵ Order No.
--------------------------------------	-------------------------------	----------------------------------	-------------------------

No allowable will be assigned to this completion until all interest have been consolidated or a non-standard unit has been approved by the division.



**APACHE CORPORATION
PALMILLO 26 STATE COM #213H
(1580' FNL & 230' FEL)
SECTION 26, T19S, R28E
N. M. P. M., EDDY COUNTY, NEW MEXICO**



DIRECTIONS TO LOCATION

From the intersection of CR-242 (Buckskin Rd.) and CR-246 (Millman Rd.),
Go West on CR-246 approx. 0.5 miles, where road turns right;
Turn right and go North on CR-246 approx. 1 mile to proposed road on the left;
Turn left and go Southwest approx. 0.2 miles, where road turns left;
Turn left and go South approx. 0.3 miles to proposed location on the left.

THIS IS NOT A BOUNDARY SURVEY, APPARENT PROPERTY CORNERS AND
PROPERTY LINES ARE SHOWN FOR INFORMATION ONLY, BOUNDARY DATA IS
SHOWN FROM A PREVIOUS SURVEY REFERENCED HEREON.

I, Jeffrey L. Fansler, a N. M. Professional Surveyor, hereby certify
that I prepared this plat from an actual survey made on the
ground under my direct supervision, said survey and plat meet
the Min. Stds. for Land Surveying in the State of N. M. and are
true and correct to the best of my knowledge and belief.

Jeffrey L. Fansler
Jeffrey L. Fansler NM PS 10034



SCALE: 1" = 100'
0 50' 100'
BEARINGS ARE GRID NAD 83
NM EAST
DISTANCES ARE HORIZ. GROUND.

Copyright 2017 - All Rights Reserved

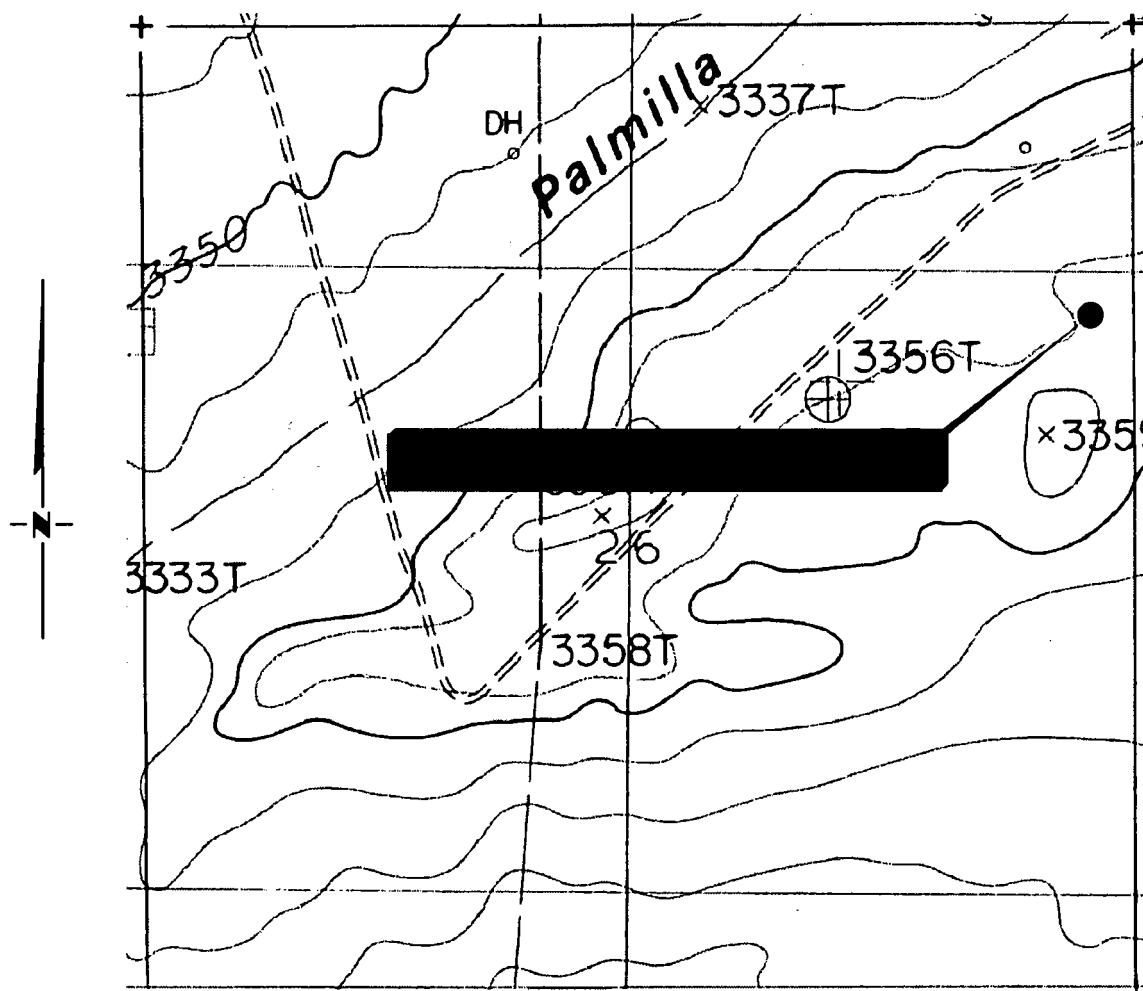
NO.	REVISION	DATE
JOB NO.:	LS1805714	
DWG. NO.:	1805714PAD	

RRC

308 W. BROADWAY ST., HOBBS, NM 88240 (575) 964-8200

SCALE: 1" = 100'
DATE: 06-05-2018
SURVEYED BY: BC
DRAWN BY: CAR
APPROVED BY: JLF
SHEET: 1 OF 1

LOCATION VERIFICATION MAP



**SECTION 26, TWP. 19 SOUTH, RGE. 28 EAST,
N. M. P. M., EDDY COUNTY, NEW MEXICO**

OPERATOR: Apache
 LEASE: Palmillo 26 State Com
 WELL NO.: 213H
 ELEVATION: 3358'

LOCATION: 1580' FNL & 230' FEL
 CONTOUR INTERVAL: 10'
 USGS TOPO. SOURCE MAP:
ILLINOIS CAMP, NM (P. E. 1985)

Copyright 2017 - All Rights Reserved

NO.	REVISION	DATE
JOB NO.: LS1805714		
DWG. NO.: 1805714LVM		

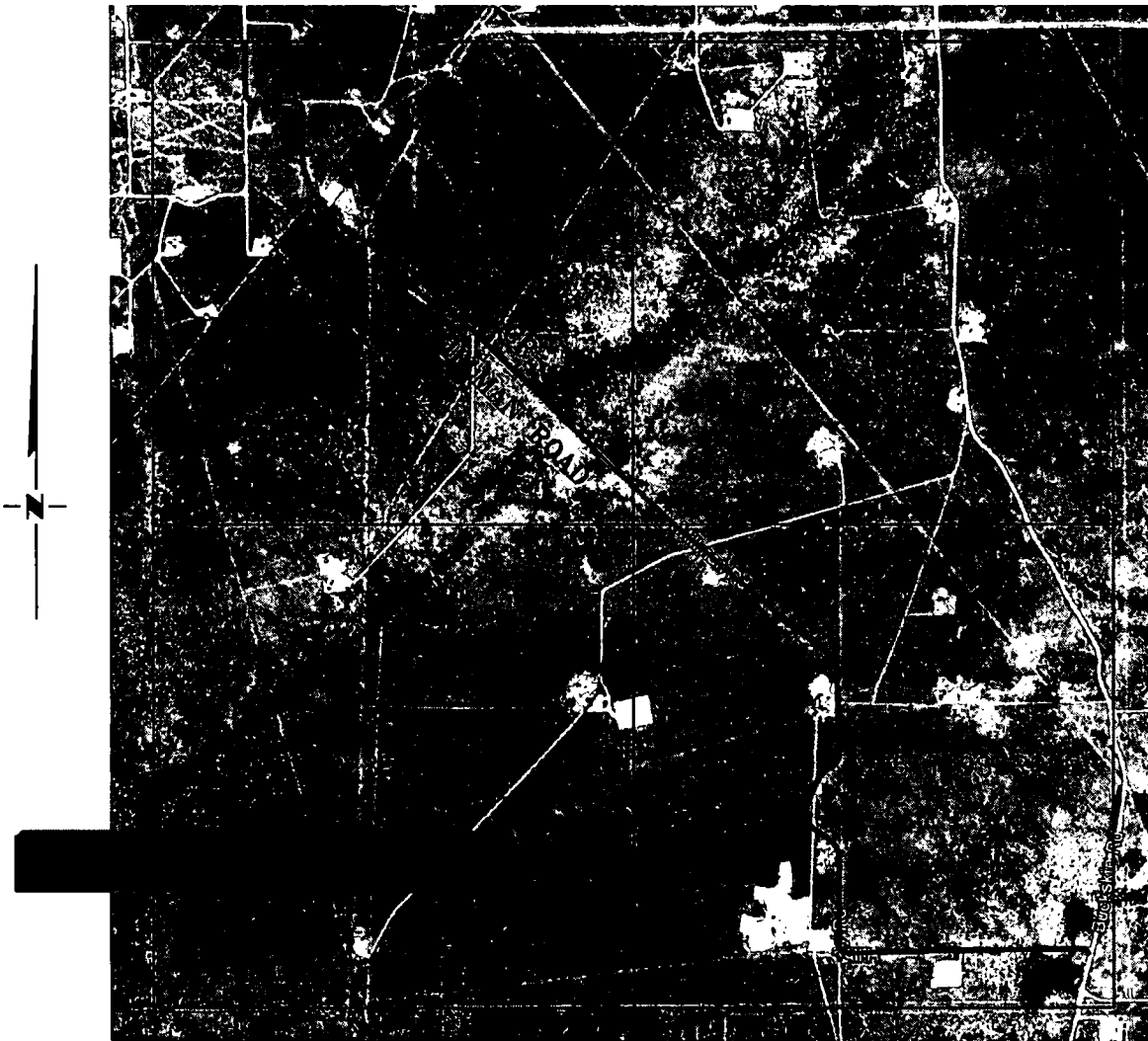
RRC

308 W. BROADWAY ST., HOBBS, NM 88240 (575) 964-8200

SCALE: 1" = 1000'
 DATE: 06-05-2018
 SURVEYED BY: BC
 DRAWN BY: CAR
 APPROVED BY: JLF
 SHEET: 1 OF 1

VICINITY MAP

NOT TO SCALE



*SECTION 26, TWP. 19 SOUTH, RGE. 28 EAST,
N. M. P. M., EDDY COUNTY, NEW MEXICO*

OPERATOR: Apache
LEASE: Palmillo 26 State Com
WELL NO.: 213H

LOCATION: 1580' FNL & 230' FEL
ELEVATION: 3358'

Copyright 2017 - All Rights Reserved

NO.	REVISION	DATE
JOB NO.: LS1805714		
DWG. NO.: 1805714VM		

RRC

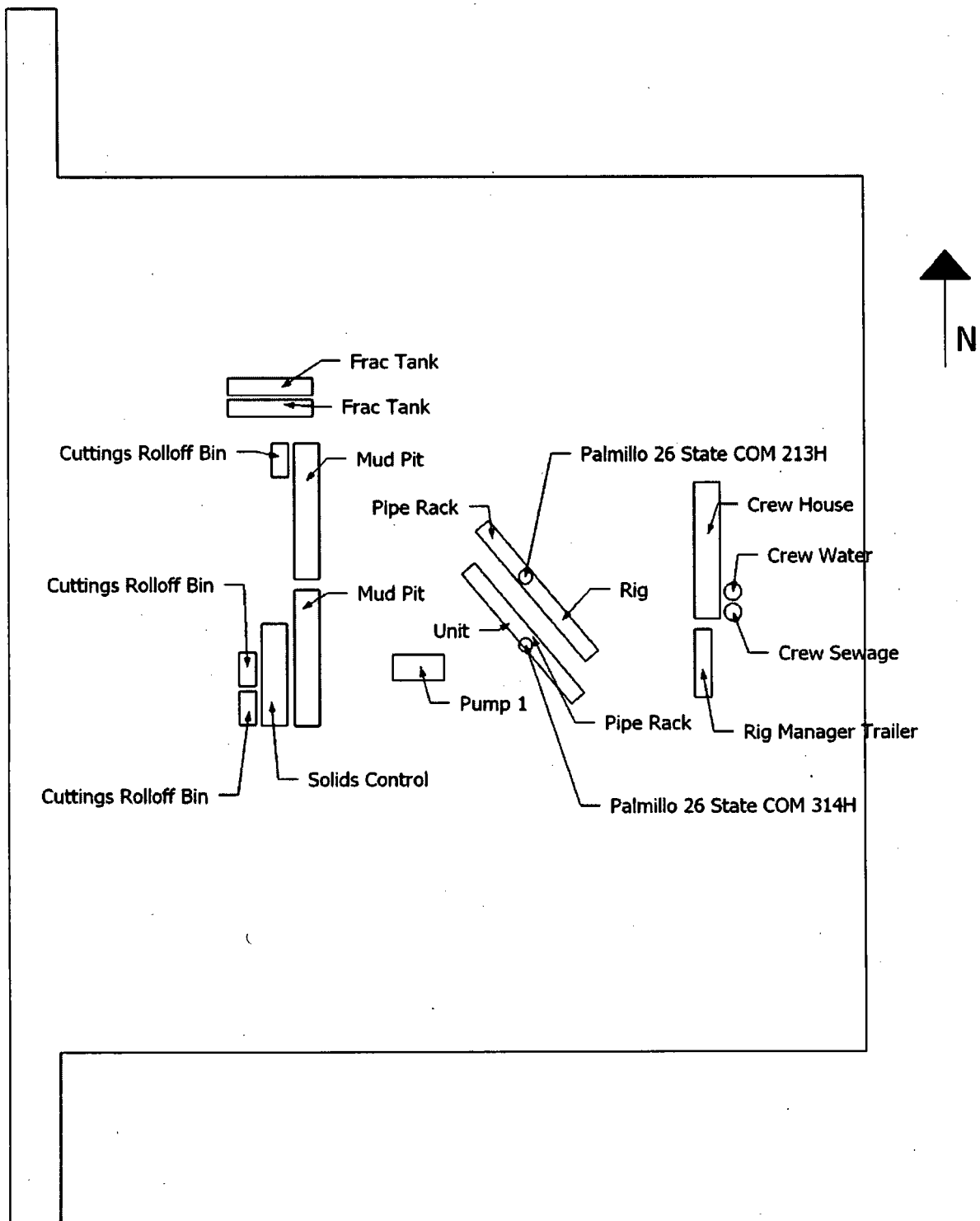


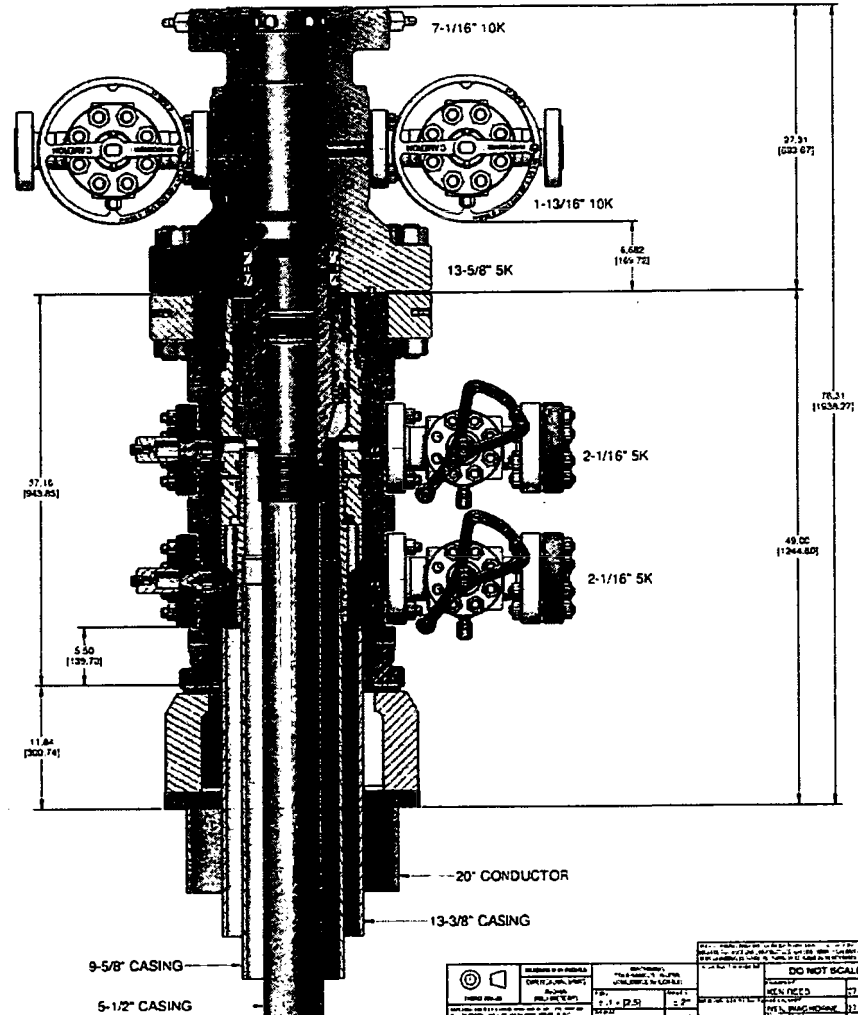
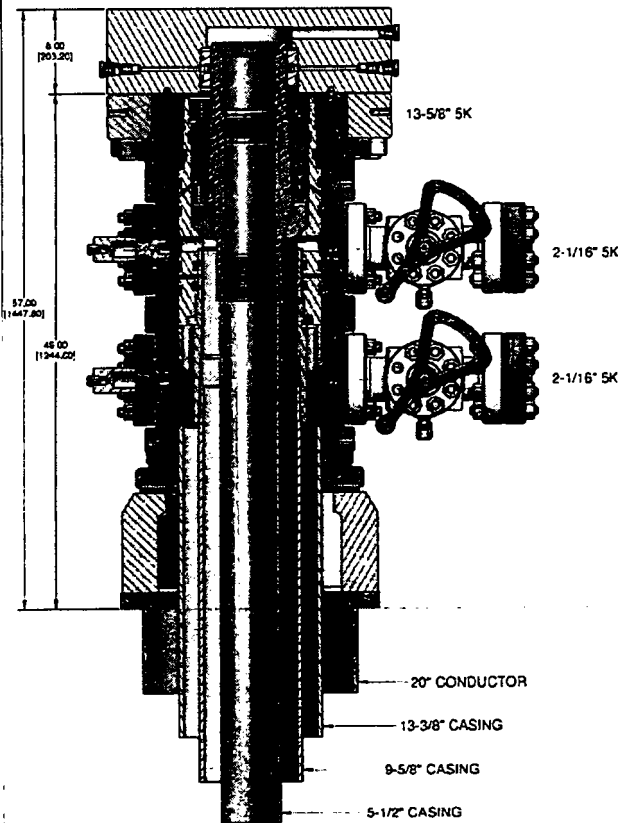
308 W. BROADWAY ST., HOBBS, NM 88240 (575) 964-8200




SCALE: N / A
DATE: 06-05-2018
SURVEYED BY: BC
DRAWN BY: CAR
APPROVED BY: JLF
SHEET: 1 OF 1

Apache Corp respectfully requests approval for the following changes and additions to the drilling plan:

1. Utilize a spudder rig to pre-set surface casing.
2. Description of Operations
 1. Spudder rig will move in their rig to drill the surface hole section and pre-set surface casing on the Palmillo 26 State COM 213H. **30-015-45040**
 - a. After drilling the surface hole section, the rig will run casing and cement following all of the applicable rules and regulations (19.15.16 NMAC Drilling and Production).
 - b. Rig will utilize fresh water based mud to drill 17-1/2" surface hole to TD. Solids control will be handled entirely on a closed loop basis.
 2. The wellhead (page 3) will be installed and tested once the 13-3/8" surface casing is cut off and the WOC time has been reached.
 3. A blind flange with the same pressure rating as the wellhead will be installed to seal the wellbore. Pressure will be monitored with a pressure gauge installed on the wellhead.
 - a. A means for intervention will be maintained while the drilling rig is not over the well.
 4. Spudder rig operations is expected to take 1-2 days on a single well pad.
 5. The NMOCD will be contacted and notified 24 hours prior to commencing spudder rig operations.
 6. Drilling operations will be performed with the drilling rig. At that time an approved BOP stack will be nipped up and tested on the wellhead before drilling operations commences on each well.
 - a. The NMOCD will be contacted / notified 24 hours before the drilling rig moves back on to the pad with the pre-set surface casing.
 7. Apache Corp will have supervision over the rig to ensure compliance with all NMOCD regulations and to oversee operations.
 8. Once the rig is removed, Apache Corp will secure the wellhead area by placing a guard rail around the cellar area.





		REVISIONS OR RE-DESIGN (DATE, BY, AND REASON) (REVISIONS ONLY) (REASON ONLY)	DRAWING TITLE (DRAWING NUMBER) (DRAWING NAME)	DO NOT SCALE			SURFACE SYSTEMS
				ITEM NO.	REV.		
10-4" 1K MIN-OFF MALE D-COUP. 27" X 13-3/4" X 6-1/2" X 5-1/2"	17 NOV 11	17 NOV 11	17 NOV 11	17 NOV 11	17 NOV 11	17 NOV 11	17 NOV 11
SD-045137-89-01				1.2		0.1	