

**NM OIL CONSERVATION
ARTESIA DISTRICT**

DISTRICT I
1420 N. FRANCIS DR., SUITE 100, ALBUQUERQUE, NM 87102
Phone: (505) 882-8121 Fax: (505) 882-8720

DISTRICT II
811 E. FIRST ST., ARTESIA, NM 88210
Phone: (505) 748-1888 Fax: (505) 748-9720

DISTRICT III
1000 RIO GRANDE RD., ALBUQUERQUE, NM 87102
Phone: (505) 884-8170 Fax: (505) 884-8170

DISTRICT IV
1220 S. ST. FRANCIS DR., SANTA FE, NM 87505
Phone: (505) 476-8480 Fax: (505) 476-3480

State of New Mexico
Energy, Minerals & Natural Resources Department
OIL CONSERVATION DIVISION
1220 SOUTH ST. FRANCIS DR.
Santa Fe, New Mexico 87505

Form C-102
Revised August 1, 2011
Submit one copy to appropriate
District Office

RECEIVED

☐ AMENDED REPORT

WELL LOCATION AND ACREAGE DEDICATION PLAT

API Number 30.015.44961	Pool Code 98199	Pool Name PARKWAY; BONE SPRING, WEST
Property Code 321420	Property Name CORAL PWU 28-27	Well Number 12H
OCRID No. 6137	Operator Name DEVON ENERGY PRODUCTION COMPANY, L.P.	Elevation 3302.5'

Surface Location

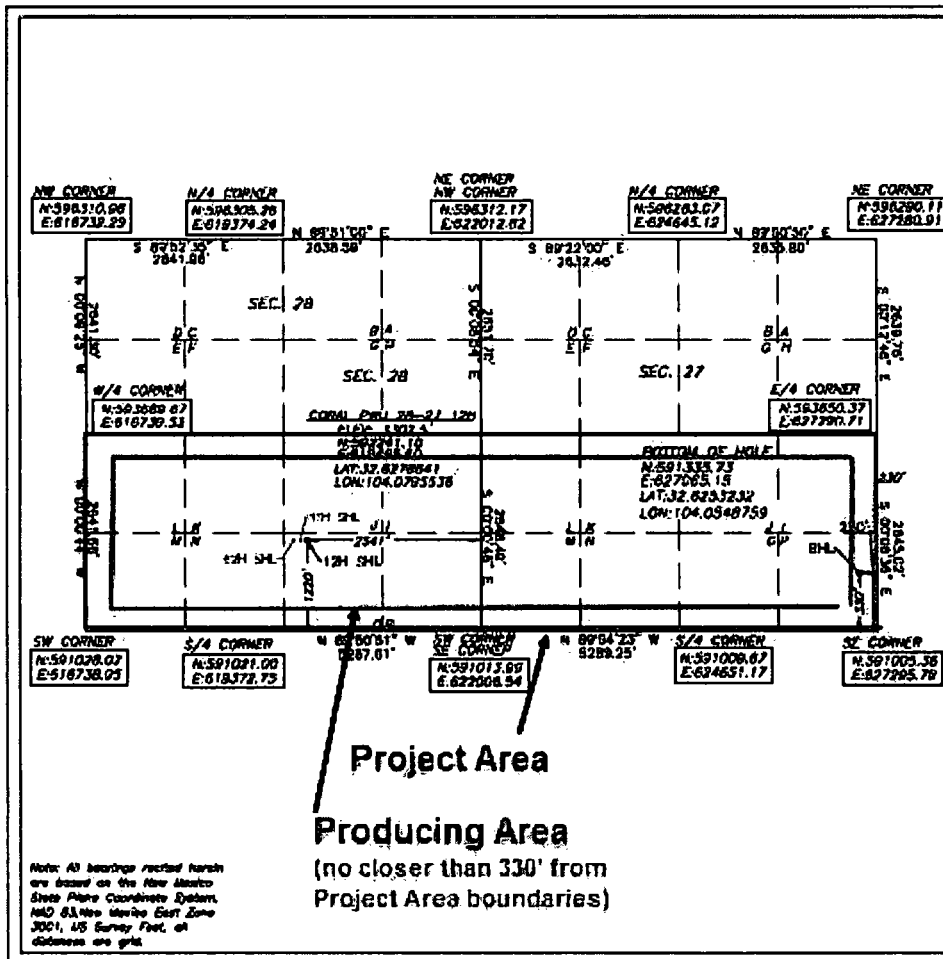
UL or lot No.	Section	Township	Range	Lot Idn	Feet from the	North/South line	Feet from the	East/West line	County
0	28	19-S	29-E		1220	SOUTH	2541	EAST	EDDY

Bottom Hole Location If Different From Surface

UL or lot No.	Section	Township	Range	Lot Idn	Feet from the	North/South line	Feet from the	East/West line	County
P	27	19-S	29-E		330	SOUTH	230	EAST	EDDY

Dedicated Acres 640	Joint or Infill	Consolidation Code	Order No. WELL TYPE: IN-FILL
-------------------------------	-----------------	--------------------	--

**NO ALLOWABLE WILL BE ASSIGNED TO THIS COMPLETION UNTIL ALL INTERESTS HAVE BEEN CONSOLIDATED
OR A NON-STANDARD UNIT HAS BEEN APPROVED BY THE DIVISION**



OPERATOR CERTIFICATION

I hereby certify that the information herein is true and complete to the best of my knowledge and belief, and that this organization either owns a working interest or unless mineral interest in the land including the proposed bottom hole location or has a right to drill this well at this location pursuant to a contract with an owner of such mineral or working interest, or to a voluntary pooling agreement or a compulsory pooling order heretofore entered by the division.

Erin Workman 06/27/18

Signature Date
Erin Workman
Printed Name
Erin.workman@dvn.com
E-mail Address

SURVEYOR CERTIFICATION

I hereby certify that the well location shown on this plat was plotted from field notes of actual surveys made by me or under my supervision, and that the same is true and correct to the best of my belief.

06/2018

Date of Survey

Signature & Seal of Professional Surveyor



06/20/18
Certificate No. 22404 B.L. LAMAN
W.O. # DRAWN BY: CM

**1st Take Point @ 9215' MD, 372' FSL, 2743' FEL 32.625535 -104.080216
Last Take Point @ 16938' MD, 330' FSL, 330' FEL 32.625326 -104.055201**