

District I
1625 N. French Dr., Hobbs, NM 88240
Phone: (505) 393-6161 Fax: (505) 393-0720

District II
811 S. First St., Artesia, NM 88210
Phone: (505) 748-1283 Fax: (505) 748-9720

District III
1000 Rio Brazos Road, Aztec, NM 87410
Phone: (505) 334-6178 Fax: (505) 334-6170

District IV
1220 S. St. Francis Dr., Santa Fe, NM 87505
Phone: (505) 476-3460 Fax: (505) 476-3462

State of New Mexico
Energy, Minerals & Natural Resources Department
OIL CONSERVATION DIVISION
1220 South St. Francis Dr.
Santa Fe, NM 87505

NM OIL CONSERVATION
ARTESIA DISTRICT

JUN 27 2018

Form C-102

Revised August 1, 2011

Submit one copy to appropriate

District Office

RECEIVED

☐ AMENDED REPORT

WELL LOCATION AND ACREAGE DEDICATION PLAT

¹ API Number 30-015-45059	² Pool Code 96546	³ Pool Name Co Hon Draw	Wildcat; Bone Spring	South
⁴ Property Code 321376	⁵ Property Name PLU 15 TWIN WELLS RANCH			⁶ Well Number 701H
⁷ OGRID No. 260737	⁸ Operator Name BOPCO, L.P.			⁹ Elevation 3530'

¹⁰ Surface Location

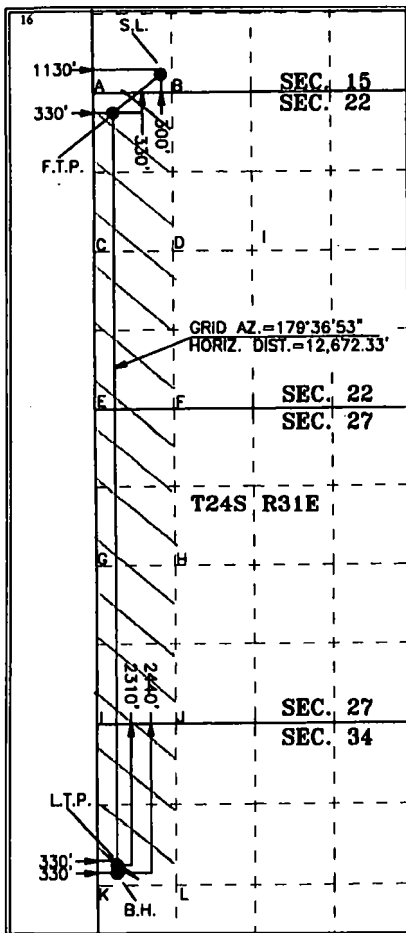
UL or lot no.	Section	Township	Range	Lot Idn	Feet from the	North/South line	Feet from the	East/West line	County
M	15	24 S	31 E		300	SOUTH	1,130	WEST	EDDY

¹¹ Bottom Hole Location If Different From Surface

UL or lot no.	Section	Township	Range	Lot Idn	Feet from the	North/South line	Feet from the	East/West line	County
E	34	24 S	31 E		2,440	NORTH	330	WEST	EDDY

¹² Dedicated Acres 400	¹³ Joint or Infill	¹⁴ Consolidation Code	¹⁵ Order No.
---	-------------------------------	----------------------------------	-------------------------

No allowable will be assigned to this completion until all interests have been consolidated or a non-standard unit has been approved by the division.



GEODETIC COORDINATES
NAD 27 NME
SURFACE LOCATION
Y= 440,884.9
X= 674,201.1
LAT.= 32.210800°N
LONG.= 103.770098°W

FIRST TAKE POINT
NAD 27 NME
Y= 440,229.4
X= 673,404.7
LAT.= 32.209064°N
LONG.= 103.772682°W

GEODETIC COORDINATES
NAD 83 NME
SURFACE LOCATION
Y= 440,923.6
X= 715,385.2
LAT.= 32.210823°N
LONG.= 103.770578°W

FIRST TAKE POINT
NAD 83 NME
Y= 440,288.1
X= 714,588.8
LAT.= 32.209188°N
LONG.= 103.773165°W

CORNER COORDINATES TABLE

NAD 27 NME

A - Y= 440,557.0 N, X= 673,072.9 E
B - Y= 440,568.4 N, X= 674,392.5 E
C - Y= 437,916.9 N, X= 673,088.6 E
D - Y= 437,925.5 N, X= 674,408.4 E
E - Y= 435,277.4 N, X= 673,107.4 E
F - Y= 435,285.6 N, X= 674,427.8 E
G - Y= 432,638.0 N, X= 673,124.5 E
H - Y= 432,643.6 N, X= 674,445.0 E
I - Y= 428,895.4 N, X= 673,143.1 E
J - Y= 430,003.7 N, X= 674,463.0 E
K - Y= 427,354.1 N, X= 673,160.7 E
L - Y= 427,361.7 N, X= 674,472.6 E

CORNER COORDINATES TABLE

NAD 83 NME

A - Y= 440,615.7 N, X= 714,257.0 E
B - Y= 440,625.1 N, X= 715,576.8 E
C - Y= 437,875.6 N, X= 714,270.8 E
D - Y= 437,884.2 N, X= 715,592.6 E
E - Y= 435,338.0 N, X= 714,291.7 E
F - Y= 435,344.2 N, X= 715,612.1 E
G - Y= 432,694.6 N, X= 714,308.9 E
H - Y= 432,702.2 N, X= 715,629.4 E
I - Y= 430,053.9 N, X= 714,327.6 E
J - Y= 430,062.2 N, X= 715,647.5 E
K - Y= 427,412.5 N, X= 714,345.3 E
L - Y= 427,420.1 N, X= 715,657.2 E

LAST TAKE POINT

NAD 27 NME
Y= 427,687.5
X= 673,488.5
LAT.= 32.174587°N
LONG.= 103.772822°W

LAST TAKE POINT

NAD 83 NME
Y= 427,748.0
X= 714,673.1
LAT.= 32.174711°N
LONG.= 103.773104°W

BOTTOM HOLE LOCATION

NAD 27 NME
Y= 427,557.6
X= 673,488.4
LAT.= 32.174230°N
LONG.= 103.772822°W

BOTTOM HOLE LOCATION

NAD 83 NME
Y= 427,616.0
X= 714,674.0
LAT.= 32.174354°N
LONG.= 103.773103°W

¹⁷ OPERATOR CERTIFICATION

I hereby certify that the information contained herein is true and complete to the best of my knowledge and belief, and that this organization either owns a working interest or unleased mineral interest in the land including the proposed bottom hole location or has a right to drill this well at this location pursuant to a contract with an owner of such a mineral or working interest, or to a voluntary pooling agreement or a compulsory pooling order heretofore entered by the division.

Signature: Kelly Kardos Date: 9/25/17

Kelly Kardos

Printed Name

kelly_kardos@xtoenergy.com

E-mail Address

¹⁸ SURVEYOR CERTIFICATION

I hereby certify that the well location shown on this plat was plotted from field notes of actual surveys made by me or under my supervision, and that the same is true and correct to the best of my belief.

08-23-2017

Date of Survey

Signature and Seal of Professional Surveyor:

[Signature]

MARK DILLON IIARP 23786
Certificate Number



RR 2017070966

RVP 6-29-18



U.S. Department of the Interior
BUREAU OF LAND MANAGEMENT

Drilling Plan Data Report

06/06/2018

APD ID: 10400024555

Submission Date: 11/14/2017

Operator Name: BOPCO LP

Well Name: POKER LAKE UNIT 15 TWR

Well Number: 701H

Well Type: OIL WELL

Well Work Type: Drill

Integrated data
reflects the most
recent changes

[Show Final Text](#)

Section 1 - Geologic Formations

Formation ID	Formation Name	Elevation	True Vertical Depth	Measured Depth	Lithologies	Mineral Resources	Producing Formation
1	PERMIAN	3530	0	0	OTHER : Quaternary	NONE	No
2	RUSTLER	2835	695	695	SILTSTONE	USEABLE WATER	No
3	TOP SALT	2477	1053	1053	SALT	OTHER : Produced Water	No
4	BASE OF SALT	-709	4239	4239	SALT	OTHER : Produced Water	No
5	DELAWARE	-905	4435	4435	SANDSTONE	NATURAL GAS,OIL,OTHER : Produced Water	No
6	BONE SPRING	-4731	8261	8261	SANDSTONE	NATURAL GAS,OIL,OTHER : Produced Water	Yes
7	BONE SPRING 1ST	-5847	9377	9377	SANDSTONE	NATURAL GAS,OIL,OTHER : Produced Water	Yes
8	BONE SPRING 2ND	-6517	10047	10047	SANDSTONE	NATURAL GAS,OIL,OTHER : Produced Water	Yes

Section 2 - Blowout Prevention

Pressure Rating (PSI): 3M

Rating Depth: 10377

Equipment: The blow out preventer equipment (BOP) for this well consists of a 13-5/8" minimum 3M Hydril and a 13-5/8" minimum 3M Double Ram BOP. MASP should not exceed 2735 psi.

Requesting Variance? YES

Variance request: A variance is requested to allow use of a flex hose as the choke line from the BOP to the Choke Manifold. If this hose is used, a copy of the manufacturer's certification and pressure test chart will be kept on the rig. Attached is an example of a certification and pressure test chart. The manufacturer does not require anchors.

Testing Procedure: All BOP testing will be done by an independent service company. Annular pressure tests will be limited to 50% of the working pressure. When nipping up on the 13-5/8" 3M bradenhead and flange, the BOP test will be limited to 3000 psi. When nipping up on the 9-5/8", the BOP will be tested to a minimum of 3000 psi. All BOP tests will include a low pressure test as per BLM regulations. The 3M BOP diagrams are attached. Blind rams will be functioned tested each trip, pipe rams will be functioned tested each day.

Choke Diagram Attachment:

PLU_15_TWR_701H_3M_Choke_20171114072525.pdf

BOP Diagram Attachment: