

District I
1625 N. French Dr., Hobbs, NM 88240
Phone: (575) 393-6161 Fax: (575) 393-0720
District II
811 S. First St., Artesia, NM 88210
Phone: (575) 748-1283 Fax: (575) 748-9720
District III
1000 Rio Brazos Road, Aztec, NM 87410
Phone: (505) 334-6178 Fax: (505) 334-6170
District IV
1220 S. St. Francis Dr., Santa Fe, NM 87505
Phone: (505) 476-3460 Fax: (505) 476-3462

NM OIL CONSERVATION State of New Mexico
ARTESIA DISTRICT
Energy, Minerals & Natural Resources Department
JUN 27 2018 OIL CONSERVATION DIVISION
1220 South St. Francis Dr.
Santa Fe, NM 87505

Form C-102
Revised August 1, 2011
Submit one copy to appropriate
District Office

RECEIVED

☐ AMENDED REPORT

WELL LOCATION AND ACREAGE DEDICATION PLAT

¹ API Number 30-015-45069		² Pool Code 98220	³ Pool Name PURPLE SAGE WOLFCAMP GAS
⁴ Property Code 321618	⁵ Property Name PRINCE 31 W2DA FEDERAL COM		⁶ Well Number 2H
⁷ OGRID NO. 14744	⁸ Operator Name MEWBOURNE OIL COMPANY		⁹ Elevation 2912'

¹⁰ Surface Location

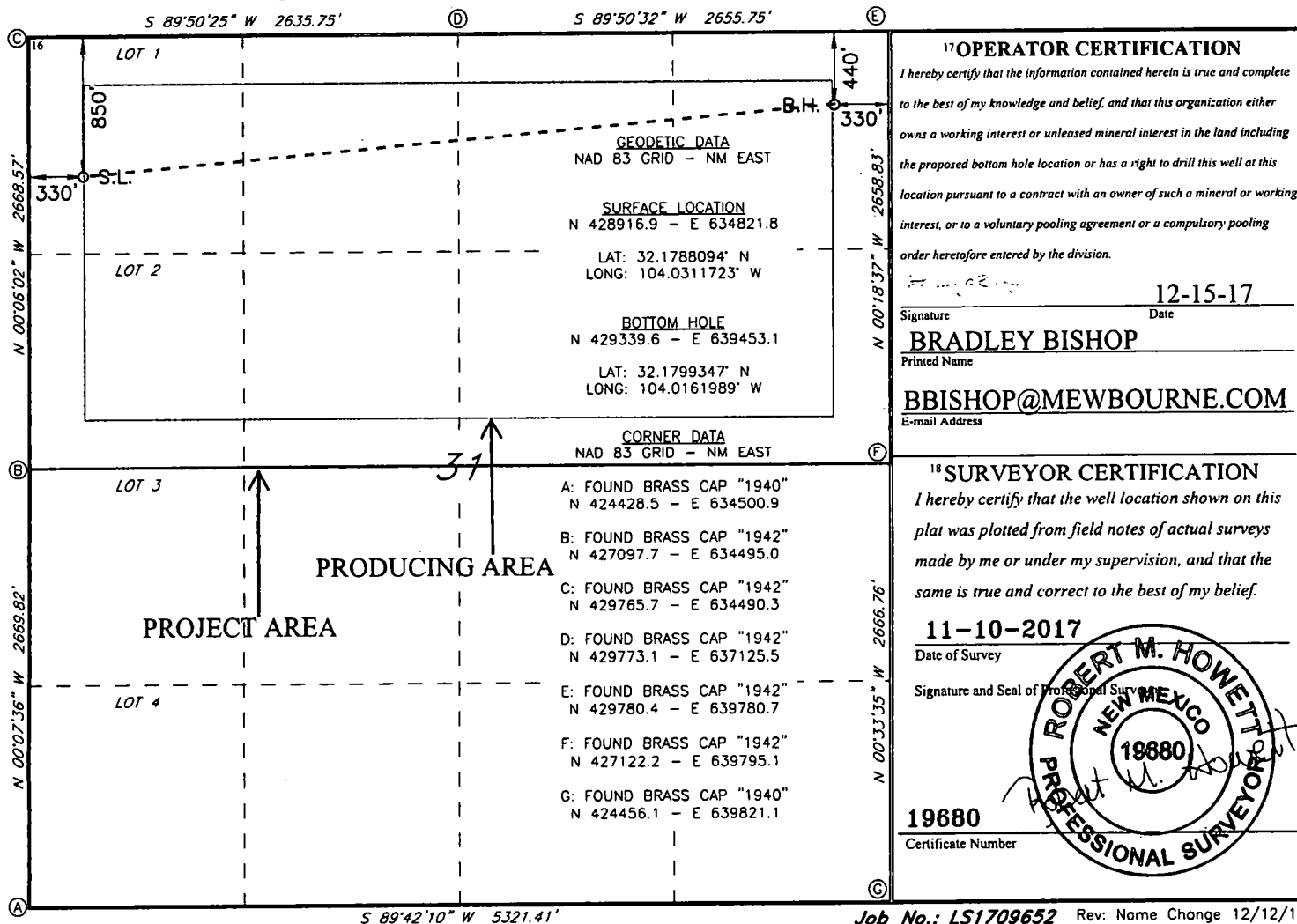
UL or lot no.	Section	Township	Range	Lot Idn	Feet from the	North/South line	Feet From the	East/West line	County
1	31	24S	29E		850	NORTH	330	WEST	EDDY

¹¹ Bottom Hole Location If Different From Surface

UL or lot no.	Section	Township	Range	Lot Idn	Feet from the	North/South line	Feet from the	East/West line	County
A	31	24S	29E		440	NORTH	330	EAST	EDDY

¹² Dedicated Acres 318.76	¹³ Joint or Infill	¹⁴ Consolidation Code	¹⁵ Order No.
--	-------------------------------	----------------------------------	-------------------------

No allowable will be assigned to this completion until all interest have been consolidated or a non-standard unit has been approved by the division.



RW 6-29-18

**United States Department of the Interior
Bureau of Land Management
Carlsbad Field Office
620 E Greene Street
Carlsbad, New Mexico 88201-1287**

Statement Accepting Responsibility for Operations

Operator Name: Mewbourne Oil Company
Street or Box: P.O. Box 5270
City, State: Hobbs, New Mexico
Zip Code: 88241

The undersigned accepts all applicable terms, conditions, stipulations, and restrictions concerning operations conducted of the leased land or portion thereof, as described below.

Lease Number: NMNM-120353, Fee

Legal Description of Land: Section 31, T-24S, R-29E Eddu County, New Mexico.
Location @ 850' FNL & 330' FWL

Formation (if applicable): Wolfcamp

Bond Coverage: \$150,000

BLM Bond File: NM1693 nationwide, NMB000919

Authorized Signature: _____



Name: Bradley Bishop
Title: Regulatory Manager
Date: 12-15-17