

RECEIVED

District I  
1625 N. French Dr., Hobbs, NM 88240  
Phone: (575) 393-6161 Fax: (575) 393-0720

District II  
811 S. First St., Artesia, NM 88210  
Phone: (575) 748-1283 Fax: (575) 748-9720

District III  
1000 Rio Brazos Road, Aztec, NM 87410  
Phone: (505) 334-6178 Fax: (505) 334-6170

District IV  
1220 S. St. Francis Dr., Santa Fe, NM 87505  
Phone: (505) 476-3460 Fax: (505) 476-3462

State of New Mexico  
Energy, Minerals & Natural Resources Department  
OIL CONSERVATION DIVISION  
1220 South St. Francis Dr.  
Santa Fe, NM 87505

JUL 03 2018

Form C-102

Revised August 1, 2011

Submit one copy to appropriate  
DISTRICT II-ARTESIA O.C.D. District Office

☐ AMENDED REPORT

## WELL LOCATION AND ACREAGE DEDICATION PLAT

<sup>1</sup> API Number <b>30-015-45090</b>	<sup>2</sup> Pool Code <b>98220</b>	<sup>3</sup> Pool Name <b>PURPLE SAGE; WOLFCAMP (GAS)</b>
<sup>4</sup> Property Code <b>321635</b>	Property Name <b>RICK DECKARD STATE 25-28-4 WXY</b>	
<sup>7</sup> OGRID No. <b>372098</b>	<sup>8</sup> Operator Name <b>MARATHON OIL PERMIAN LLC</b>	<sup>6</sup> Well Number <b>12H</b>
		<sup>9</sup> Elevation <b>2963'</b>

<sup>10</sup> Surface Location

UL or lot no.	Section	Township	Range	Lot Idn	Feet from the	North/South line	Feet from the	East/West line	County
<b>0</b>	<b>4</b>	<b>T25S</b>	<b>R28E</b>		<b>519</b>	<b>SOUTH</b>	<b>1350</b>	<b>EAST</b>	<b>EDDY</b>

<sup>11</sup> Bottom Hole Location If Different From Surface

UL or lot no.	Section	Township	Range	Lot Idn	Feet from the	North/South line	Feet from the	East/West line	County
<b>B</b>	<b>4</b>	<b>T25S</b>	<b>R28E</b>		<b>330</b>	<b>NORTH</b>	<b>2336</b>	<b>EAST</b>	<b>EDDY</b>

<sup>12</sup> Dedicated Acres <b>320.64</b>	<sup>13</sup> Joint or Infill	<sup>14</sup> Consolidation Code	<sup>15</sup> Order No.
--	-------------------------------	----------------------------------	-------------------------

No allowable will be assigned to this completion until all interests have been consolidated or a non-standard unit has been approved by the division.

<sup>16</sup> CORNER COORDINATES NAD 83, SPCS NM EAST A - X: 615881.69' / Y: 4243391.91' B - X: 618544.38' / Y: 4243397.90' C - X: 618564.83' / Y: 419020.02' D - X: 615885.84' / Y: 419047.50'		CORNER COORDINATES NAD 27, SPCS NM EAST A - X: 574697.93' / Y: 424333.75' B - X: 577360.57' / Y: 424339.70' C - X: 577380.90' / Y: 418961.93' D - X: 574701.96' / Y: 418989.44'		<sup>17</sup> OPERATOR CERTIFICATION I hereby certify that the information contained herein is true and complete to the best of my knowledge and belief, and that this organization either owns a working interest or unleased mineral interest in the land including the proposed bottom hole location or has a right to drill this well at this location pursuant to a contract with an owner of such a mineral or working interest, or to a voluntary pooling agreement or a compulsory pooling order heretofore entered by the division.  Signature: <i>Adrian Covarrubias</i> Date: <b>6/29/2018</b> Printed Name: <b>Adrian Covarrubias</b> E-mail Address:		
SECTION 32	SECTION 33	T-24-S	A	SECTION 33	B	SECTION 34
SECTION 5	SECTION 4	T-25-S		SECTION 4		SECTION 3
LAST TAKE POINT/BOTTOM HOLE LOCATION 330' FNL 2336' FEL, SECTION 4 NAD 83, SPCS NM EAST X:616211.95' / Y:424062.65' LAT:32.16559496N / LON:-104.09135796W NAD 27, SPCS NM EAST X:575028.18' / Y:424004.49' LAT:32.16547292N / LON:-104.09086668W		LAST TAKE POINT/BHL 330'		2336'		
FIRST TAKE POINT 330' FSL 2351' FEL, SECTION 4 NAD 83, SPCS NM EAST X:616215.58' / Y:419374.14' LAT:32.15270664N / LON:-104.09138028W NAD 27, SPCS NM EAST X:575031.71' / Y:419316.07' LAT:32.15258444N / LON:-104.09088939W						
SURFACE HOLE LOCATION 519' FSL 1350' FEL, SECTION 4 NAD 83, SPCS NM EAST X:617216.85' / Y:419553.09' LAT:32.15319233N / LON:-104.08814360W NAD 27, SPCS NM EAST X:576032.96' / Y:419495.00' LAT:32.15307009N / LON:-104.08765283W						
SECTION 5	SECTION 4			SECTION 4		SECTION 3
SECTION 8	SECTION 9			SECTION 9	C	SECTION 10
FIRST TAKE POINT 330'		SHL 1331'		1350'		
		330'		2351'		
		519'				

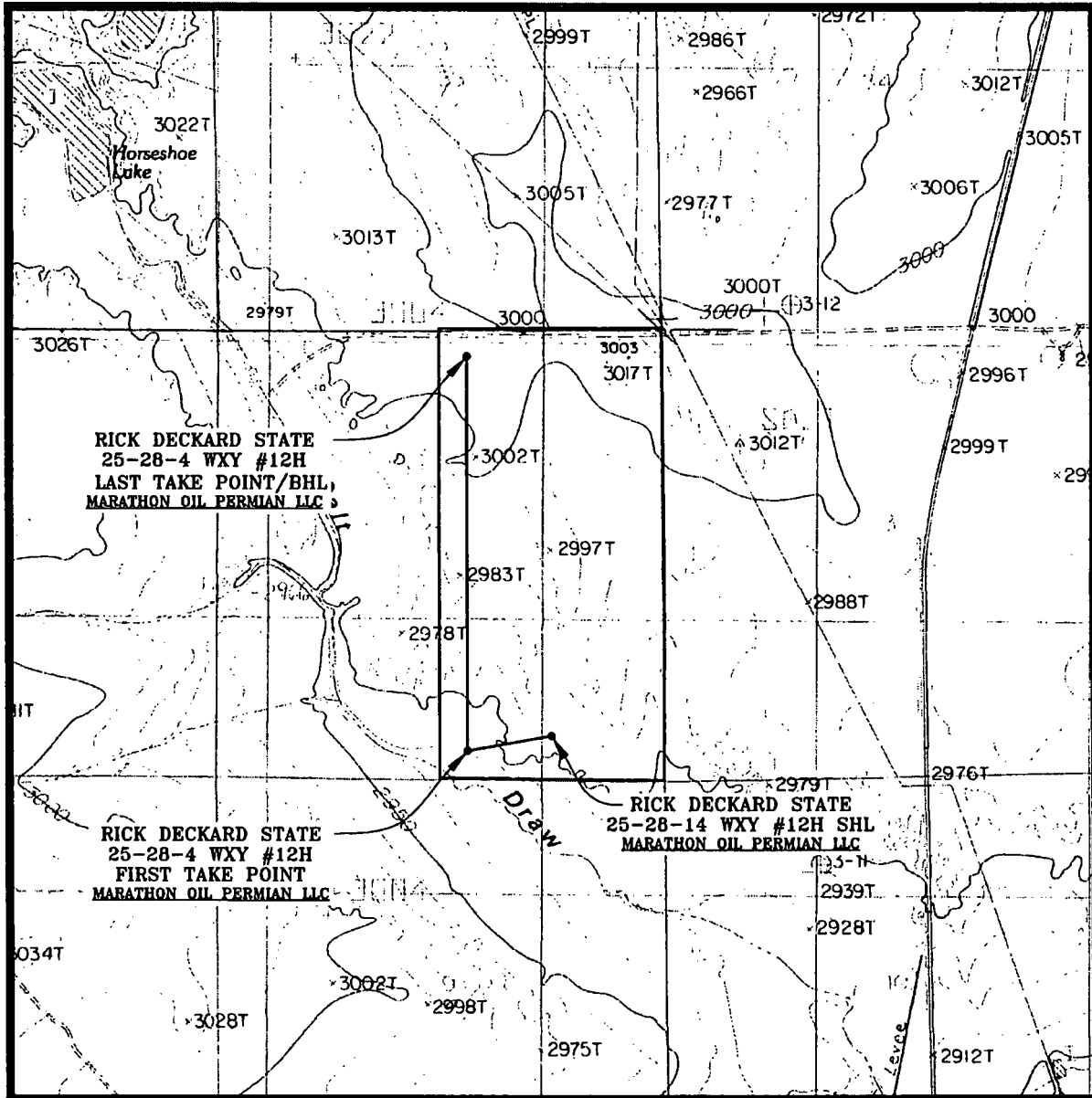
Certificate Number DAVID W. MYERS 11403

1	05/29/2018	ANC
REV.	DATE	BY

SHEET 1 OF 3  
R3899\_001

Rw 7-3-18

# LOCATION VERIFICATION MAP



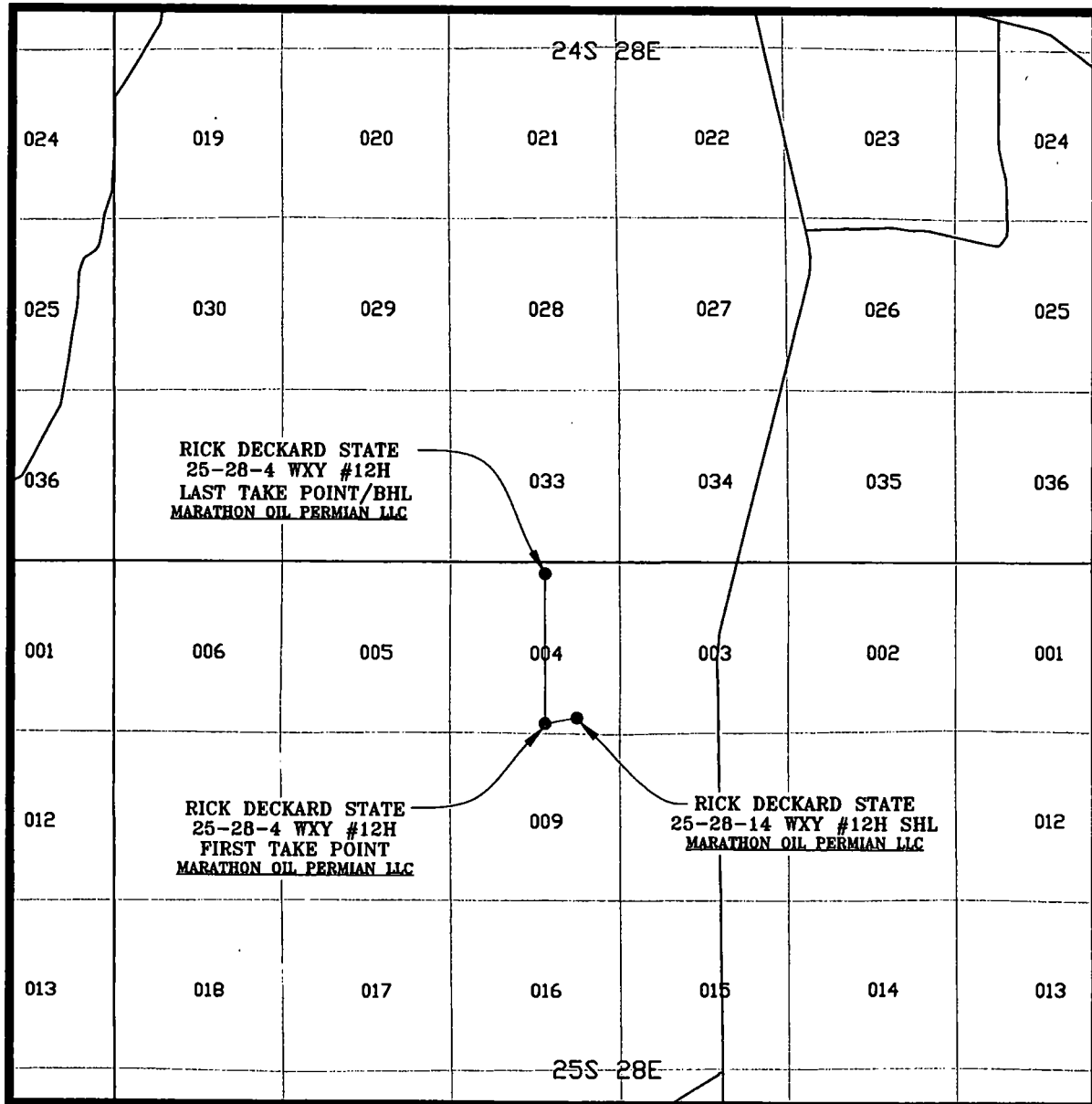
SEC. 4 TWP. 28-S RGE. 25-E  
 SURVEY: N.M.P.M.  
 COUNTY: EDDY  
 DESCRIPTION: 519' FSL & 1350' FEL  
 ELEVATION: 2963'  
 OPERATOR: MARATHON OIL PERMIAN LLC  
 LEASE: RICK DECKARD STATE 25-28-4  
 U.S.G.S. TOPOGRAPHIC MAP: MALAGA, N.M.

SCALE: 1" = 2000'  
 CONTOUR INTERVAL = 10'

SHEET 2 OF 3

PREPARED BY:  
 R-SQUARED GLOBAL, LLC  
 1309 LOUISVILLE AVENUE, MONROE, LA 71201  
 318-323-8900 OFFICE  
 JOB No. R3899\_001

# VICINITY MAP



SEC. 4 TWP. 28-S RGE. 25-E  
 SURVEY: N.M.P.M.  
 COUNTY: EDDY  
 DESCRIPTION: 519' FSL & 1350' FEL  
 ELEVATION: 2963'  
 OPERATOR: MARATHON OIL PERMIAN LLC  
 LEASE: RICK DECKARD STATE 25-28-4  
 U.S.G.S. TOPOGRAPHIC MAP: MALAGA, N.M.

SCALE: 1" = 1 MILE

SHEET 3 OF 3

PREPARED BY:  
 R-SQUARED GLOBAL, LLC  
 1309 LOUISVILLE AVENUE, MONROE, LA 71201  
 318-323-6900 OFFICE  
 JOB No. R3899\_001