

District I
1625 N. French Dr., Hobbs, NM 88240
Phone: (575) 393-6161 Fax: (575) 393-0720

District II
811 S. First St., Artesia, NM 88210
Phone: (575) 748-1283 Fax: (575) 748-9720

District III
1000 Rio Brazos Road, Aztec, NM 87410
Phone: (505) 334-6178 Fax: (505) 334-6170

District IV
1220 S. St. Francis Dr., Santa Fe, NM 87505
Phone: (505) 476-3460 Fax: (505) 476-3462

State of New Mexico
Energy, Minerals & Natural Resources Department
OIL CONSERVATION DIVISION
1220 South St. Francis Dr.
Santa Fe, NM 87505

Form C-102
Revised August 1, 2011
Submit one copy to appropriate
District Office

RECEIVED
JUL 03 2018

☐ AMENDED REPORT

DISTRICT II-ARTESIA O.C.D.
WELL LOCATION AND ACREAGE DEDICATION PLAT

¹ API Number 30-015-45093	² Pool Code 98220	³ Pool Name PURPLE SAGE; WOLFCAMP (GAS)
⁴ Property Code 321636	Property Name RICK DECKARD STATE 25-28-4 WA	
⁷ OGRID No. 372098	⁸ Operator Name MARATHON OIL PERMIAN LLC	⁶ Well Number 15H
		⁹ Elevation 2963'

¹⁰ Surface Location									
UL or lot no.	Section	Township	Range	Lot Idn	Feet from the	North/South line	Feet from the	East/West line	County
P	4	T25S	R28E		520	SOUTH	1320	EAST	EDDY
¹¹ Bottom Hole Location If Different From Surface									
UL or lot no.	Section	Township	Range	Lot Idn	Feet from the	North/South line	Feet from the	East/West line	County
B	4	T25S	R28E		330	NORTH	1663	EAST	EDDY
¹² Dedicated Acres 320.64		¹³ Joint or Infill		¹⁴ Consolidation Code		¹⁵ Order No.			

No allowance will be assigned to this completion until all interests have been consolidated or a non-standard unit has been approved by the division.

<p>SECTION 32 SECTION 33 T-24-S</p> <p>SECTION 5 SECTION 4 T-25-S</p> <p>LAST TAKE POINT/BOTTOM HOLE LOCATION 330' FNL 1663' FEL, SECTION 4 NAD 83, SPCS NM EAST X:616885.00' / Y:424064.17' LAT:32.16559495N / LON:104.08918284W NAD 27, SPCS NM EAST X:575701.21' / Y:424006.00' LAT:32.16547288N / LON:104.08869166W</p> <p>FIRST TAKE POINT 520' FSL 1320' FEL, SECTION 4 NAD 83, SPCS NM EAST X:616895.84' / Y:419367.16' LAT:32.15268323N / LON:104.08918224W NAD 27, SPCS NM EAST X:575711.95' / Y:419309.08' LAT:32.15256099N / LON:104.08869144W</p> <p>SURFACE HOLE LOCATION 520' FSL 1320' FEL, SECTION 4 NAD 83, SPCS NM EAST X:617246.86' / Y:419553.19' LAT:32.15319242N / LON:104.08804662W NAD 27, SPCS NM EAST X:576062.97' / Y:419495.10' LAT:32.15307017N / LON:104.08755586W</p> <p>CORNER COORDINATES NAD 83, SPCS NM EAST A - X: 615881.69' / Y: 424391.91' B - X: 618544.38' / Y: 424397.50' C - X: 618564.83' / Y: 419020.02' D - X: 615885.84' / Y: 419047.50'</p>				<p>SECTION 34 SECTION 3</p> <p>LAST TAKE POINT/BHL</p> <p>SHL</p> <p>FIRST TAKE POINT</p>			
<p>SECTION 5 SECTION 4</p> <p>SECTION 8 SECTION 9</p> <p>CORNER COORDINATES NAD 27, SPCS NM EAST A - X: 574697.93' / Y: 424333.75' B - X: 577360.57' / Y: 424339.70' C - X: 577380.90' / Y: 418961.93' D - X: 574701.96' / Y: 418989.44'</p>				<p>SECTION 3 SECTION 10</p>			

¹⁷ OPERATOR CERTIFICATION
I hereby certify that the information contained herein is true and complete to the best of my knowledge and belief, and that this organization either owns a working interest or unleased mineral interest in the land including the proposed bottom hole location or has a right to drill this well at this location pursuant to a contract with an owner of such a mineral or working interest, or to a voluntary pooling agreement or a compulsory pooling order hereinafter entered by the division.

Signature: *Adrian Covarrubias* Date: **6/29/2018**

Printed Name: **Adrian Covarrubias**

E-mail Address:

¹⁸ SURVEYOR CERTIFICATION
I hereby certify that the well location shown on this plat was plotted from field notes of actual surveys made by me or under my supervision, and that the same is true and correct to the best of my belief.

Date of Survey: **JUNE 26, 2018**

Signature and Seal of Professional Surveyor: *David W. Myers*

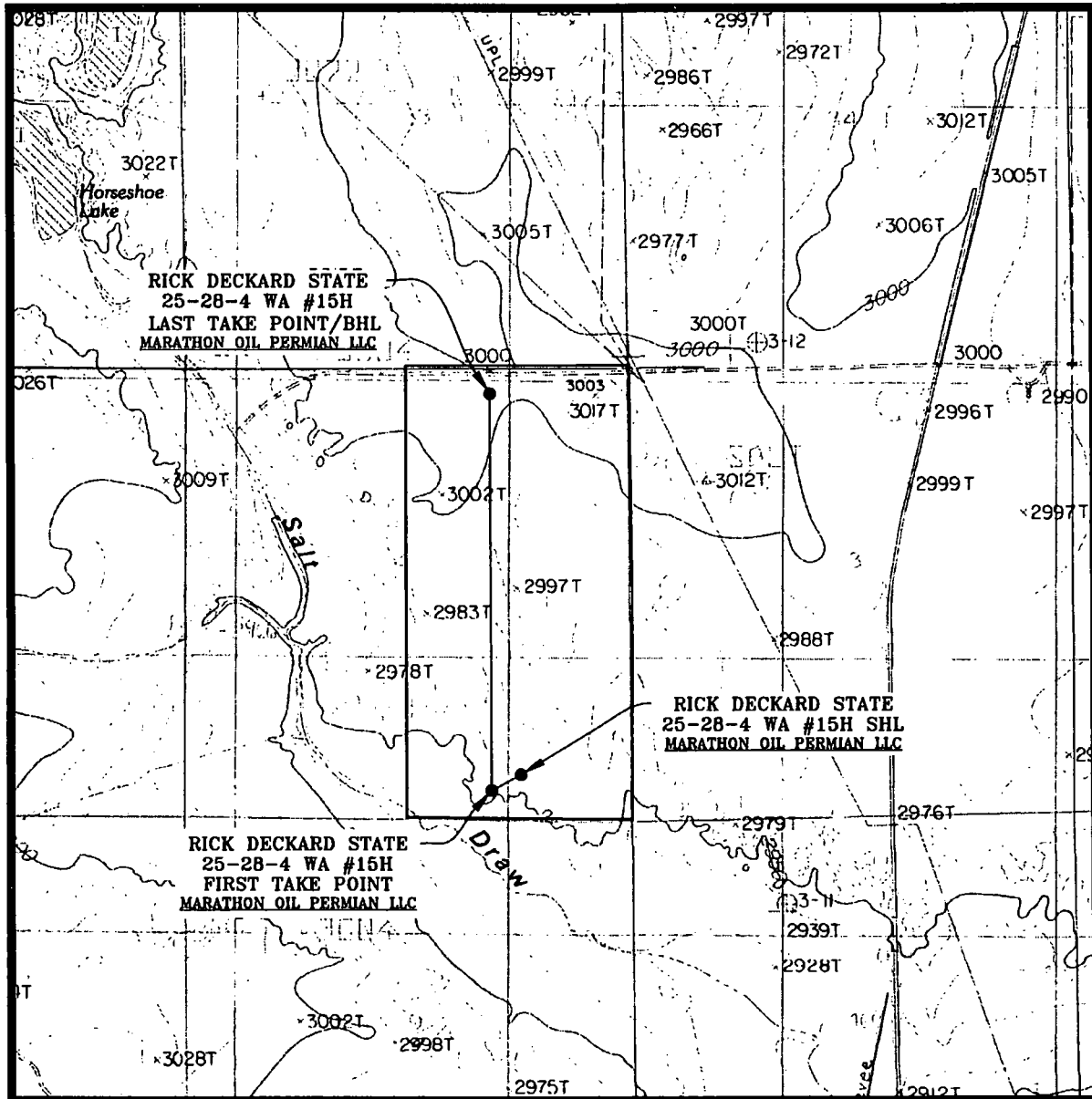
Certificate Number: **DAVID W. MYERS 11403**

2	06/18/2018	CAP
REV.	DATE	BY

SHEET 1 OF 3
JOB No. R3899_002

rw 7-3-18

LOCATION VERIFICATION MAP



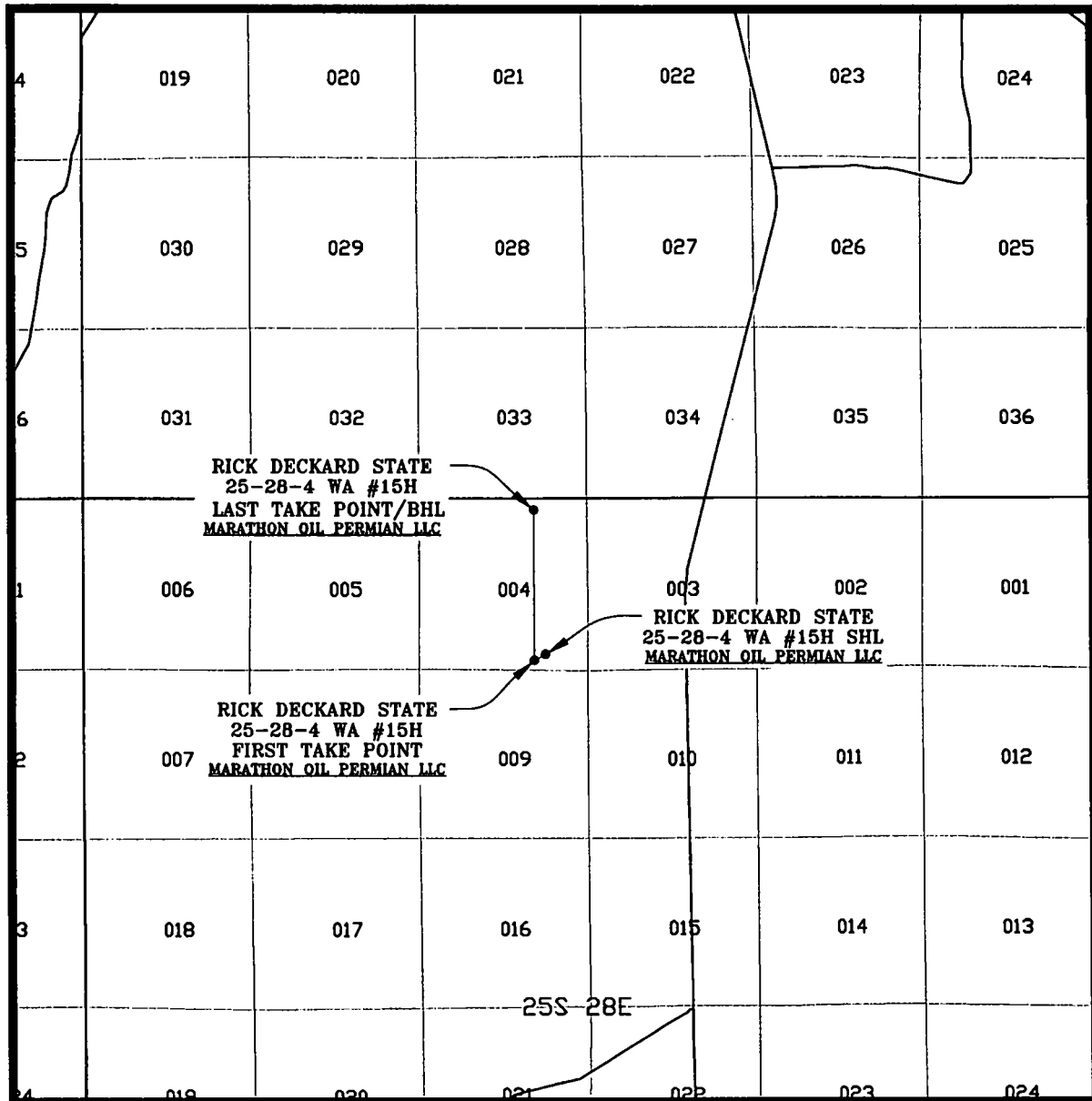
SEC. 4 TWP. 25-S RGE. 28-E
 SURVEY: N.M.P.M.
 COUNTY: EDDY
 DESCRIPTION: 520' FSL & 1320' FEL
 ELEVATION: 2963'
 OPERATOR: MARATHON OIL PERMIAN LLC
 LEASE: RICK DECKARD STATE 25-28-4
 U.S.G.S. TOPOGRAPHIC MAP: MALAGA, N.M.

SCALE: 1" = 2000'
 CONTOUR INTERVAL = 10'

SHEET 2 OF 3

PREPARED BY:
 R-SQUARED GLOBAL, LLC
 1309 LOUISVILLE AVENUE, MONROE, LA 71201
 318-323-6900 OFFICE
 JOB No. R3899_002

VICINITY MAP



SEC. 4 TWP. 25-S RGE. 28-E
 SURVEY: N.M.P.M.
 COUNTY: EDDY
 DESCRIPTION: 520' FSL & 1320' FEL
 ELEVATION: 2963'
 OPERATOR: MARATHON OIL PERMIAN LLC
 LEASE: RICK DECKARD STATE 25-28-4
 U.S.G.S. TOPOGRAPHIC MAP: MALAGA, N.M.

SCALE: 1" = 1 MILE

SHEET 3 OF 3

PREPARED BY:
 R-SQUARED GLOBAL, LLC
 1309 LOUISVILLE AVENUE, MONROE, LA 71201
 318-323-6900 OFFICE
 JOB No. R3899_002