

UNITED STATES  
DEPARTMENT OF THE INTERIOR  
BUREAU OF LAND MANAGEMENT

NMOCD  
Artesia

FORM APPROVED  
OMB NO. 1004-0137  
Expires: January 31, 2018

**SUNDRY NOTICES AND REPORTS ON WELLS**  
*Do not use this form for proposals to drill or to re-enter an abandoned well. Use form 3160-3 (APD) for such proposals.*

**SUBMIT IN TRIPLICATE - Other instructions on page 2**

1. Type of Well <input checked="" type="checkbox"/> Oil Well <input type="checkbox"/> Gas Well <input type="checkbox"/> Other		5. Lease Serial No. NMNM0467932
2. Name of Operator COG OPERATING LLC		6. If Indian, Allottee or Tribe Name
Contact: KANICIA CASTILLO E-Mail: kcastillo@concho.com		7. If Unit or CA/Agreement, Name and/or No.
3a. Address 600 W ILLINOIS AVE MIDLAND, TX 79701	3b. Phone No. (include area code) Ph: 432-685-4332	8. Well Name and No. WD MCINTYRE E 8
4. Location of Well (Footage, Sec., T., R., M., or Survey Description) Sec 20 T17S R30E Mer NMP 1650FSL 2250FWL		9. API Well No. 30-015-31787
		10. Field and Pool or Exploratory Area LOCO HILLS; GLORIETA YESO <i>Trig Grayburg Jackson Q6, SA</i>
		11. County or Parish, State 28509 EDDY COUNTY, NM

**12. CHECK THE APPROPRIATE BOX(ES) TO INDICATE NATURE OF NOTICE, REPORT, OR OTHER DATA**

TYPE OF SUBMISSION	TYPE OF ACTION			
<input checked="" type="checkbox"/> Notice of Intent	<input type="checkbox"/> Acidize	<input type="checkbox"/> Deepen	<input type="checkbox"/> Production (Start/Resume)	<input type="checkbox"/> Water Shut-Off
<input type="checkbox"/> Subsequent Report	<input type="checkbox"/> Alter Casing	<input type="checkbox"/> Hydraulic Fracturing	<input type="checkbox"/> Reclamation	<input type="checkbox"/> Well Integrity
<input type="checkbox"/> Final Abandonment Notice	<input type="checkbox"/> Casing Repair	<input type="checkbox"/> New Construction	<input checked="" type="checkbox"/> Recomplete	<input type="checkbox"/> Other
	<input type="checkbox"/> Change Plans	<input type="checkbox"/> Plug and Abandon	<input type="checkbox"/> Temporarily Abandon	
	<input type="checkbox"/> Convert to Injection	<input type="checkbox"/> Plug Back	<input type="checkbox"/> Water Disposal	

13. Describe Proposed or Completed Operation: Clearly state all pertinent details, including estimated starting date of any proposed work and approximate duration thereof. If the proposal is to deepen directionally or recompleat horizontally, give subsurface locations and measured and true vertical depths of all pertinent markers and zones. Attach the Bond under which the work will be performed or provide the Bond No. on file with BLM/BIA. Required subsequent reports must be filed within 30 days following completion of the involved operations. If the operation results in a multiple completion or recompletion in a new interval, a Form 3160-4 must be filed once testing has been completed. Final Abandonment Notices must be filed only after all requirements, including reclamation, have been completed and the operator has determined that the site is ready for final inspection.

COG Operating LLC, respectfully requests to recompleat to the San Andres as follows:  
MCINTYRE WD E #8

We are going to set a CIBP at 4,352? (50? above the YESO perms) w/ 40? of CMT on top of the plug to have our PBD @ 4,312?. We plan to have our top perms from 3,225? ? 3,530? and bottom perms from 3,570?-4,025?. Ideally, we like to have 200?-300? of rathole below our bottom perms to give our bottom hole assembly room and prevent tubing from getting stuck with sand. In addition to having desired rathole space, this gives COG the option to re-enter the Glorieta/Yeso formation at a later time.

Equipment Pull Procedure  
? MIRU WSU, NU BOP

? Unset pump and POOH with rod and tbq

*SC 4-23-18*  
Accepted for record - NMOCD

SEE ATTACHED FOR  
CONDITIONS OF APPROVAL

RECEIVED

APR 19 2018

14. I hereby certify that the foregoing is true and correct.	
Electronic Submission #411761 verified by the BLM Well Information System For COG OPERATING LLC, sent to the Carlsbad Committed to AFMSS for processing by JENNIFER SANCHEZ on 04/16/2018 ()	
Name (Printed/Typed) KANICIA CASTILLO	Title PREPARER
Signature (Electronic Submission)	Date 04/16/2018
THIS SPACE FOR FEDERAL OR STATE OFFICE USE	
Approved By _____	Title _____ Date _____
Conditions of approval, if any, are attached. Approval of this notice does not warrant or certify that the applicant holds legal or equitable title to those rights in the subject lease which would entitle the applicant to conduct operations thereon.	Office _____

Title 18 U.S.C. Section 1001 and Title 43 U.S.C. Section 1212, make it a crime for any person knowingly and willfully to make to any department or agency of the United States any false, fictitious or fraudulent statements or representations as to any matter within its jurisdiction.

(Instructions on page 2)

**\*\* OPERATOR-SUBMITTED \*\* OPERATOR-SUBMITTED \*\* OPERATOR-SUBMITTED \*\***

*RWP. 5-4-18.*

## Additional data for EC transaction #411761 that would not fit on the form

### 32. Additional remarks, continued

- ? PU scraper and scrape down to 4,402?
- ? RU Wireline
- ? Make gauge ring/ junk basket run
- ? Set CIBP @ 4,352?
- ? Wireline truck dump 40? Class C cement of top of CIBP
- ? Tag cement plug to verify depth of 4,312?
- ? Pull up 4? to circulate hole clean with fresh water, and displace w/ 2% KCL and 1% packer corrosion inhibitor.
- ? Test Casing to 4,300 psi and report back to engineering if the pressure holds.
- ? Dump bail acid in the perf interval
- ? RIH w/ perforating guns and perforate San Andres Zone from 3,570?-4,025?, w/ 3 spf, 120? phasing, 54 holes
- ? NU 5K frac valve
- ? Secure wellbore
- ? RDMO WSU

#### Tentative Recompletion Procedure

- ? RU Elite Well Services Frac Crew
- ? Acidize w/ 3,000 gals of 15% HCl.
- ? XL Frac zone w/ 375,000 # of sand.
- ? Record ISIP and FG, Get 5, 10, 15 min SIP
- ? Rig up Wireline
- ? RIH w/ WL and set Composite Plug @ 3,550?
- ? Perforate San Andres Zone from 3,225?-3,530?, w/ 3 spf, 120? phasing, 54 holes.
- ? Acidize w/ 3,000 gals of 15% HCl.
- ? XL Frac zone w/ 375,000 # of sand.
- ? Record ISIP and FG, Get 5, 10, 15 min SIP
- ? RDMO Elite

Please see attachment for full procedure.

### **MCINTYRE WD E #8**

We are going to set a CIBP at 4,352' (50' above the YESO perfs) w/ 40' of CMT on top of the plug to have our PBTD @ 4,312'. We plan to have our top perfs from 3,225' – 3,530' and bottom perfs from 3,570'-4,025'. Ideally, we like to have 200'-300' of rathole below our bottom perfs to give our bottom hole assembly room and prevent tubing from getting stuck with sand. In addition to having desired rathole space, this gives COG the option to re-enter the Glorietta/Yeso formation at a later time.

### **Equipment Pull Procedure**

- MIRU WSU, NU BOP
- Unset pump and POOH with rod and tbg
- PU scraper and scrape down to 4,402'
- RU Wireline
- Make gauge ring/ junk basket run  
[REDACTED]
- Wireline truck dump 40' Class C cement of top of CIBP  
[REDACTED]
- Pull up 4' to circulate hole clean with fresh water, and displace w/ 2% KCL and 1% packer corrosion inhibitor.
- Test Casing to 4,300 psi and report back to engineering if the pressure holds.
- Dump bail acid in the perf interval
- RIH w/ perforating guns and perforate San Andres Zone from [REDACTED], w/ 3 spf, 120° phasing, 54 holes
- NU 5K frac valve
- Secure wellbore
- RDMO WSU

### ***Tentative Recompletion Procedure***

- RU Elite Well Services Frac Crew
- Acidize w/ 3,000 gals of 15% HCl.
- XL Frac zone w/ 375,000 # of sand.
- Record ISIP and FG, Get 5, 10, 15 min SIP
- Rig up Wireline  
[REDACTED]
- Perforate San Andres Zone from [REDACTED], w/ 3 spf, 120° phasing, 54 holes.
- Acidize w/ 3,000 gals of 15% HCl.
- XL Frac zone w/ 375,000 # of sand.
- Record ISIP and FG, Get 5, 10, 15 min SIP
- RDMO Elite

### **Return to Production Procedure**

- MIRU WSU
- RIH with bit and bailer to drill out composite plug
- Clean out fill to new [REDACTED]
- RIH with production tubing as follows:
  - (96) jts 2-7/8" J55 6.5# tbg
  - (1) 2' marker joint

- (2) jts 2-7/8" J55 6.5# tbg
- TAC @3,187'
- (26) jts 2-7/8" J55 6.5# tbg
- SN @ 4,030'
- (1) 20' MSMA
- EOT @ 4,050'
- ND BOP, set TAC, flange up WH
- RIH w/ rod design as follows:
  - (1) 26' x 1-1/2" SMPR
  - (1) 4' x 3/4" rod sub
  - (154) 3/4" D rods
  - (7) 1-5/8" K bars
  - (1) 25-150 RHBC-20' Pump
- Please remove as many rods as possible and pull the rest from inventory
- PLEASE ADJUST UNIT TO 2.5 GPM
- PLEASE ENSURE UNIT IS IN LONG HOLE ON CRANKS (36" Stroke length)
  - If crank rotation is not CCW, please make sure it is CCW
- Hang on, load tubing and note pump action and alignment
- Clean location
- Update rod and tubing detail in Well View
- All charges will hit recompletion AFE (800/500) code
- PWOP and contact Robby Miller before turning on
- RDMO, TOTP

# COG Operating LLC

CURRENT

Lease & Well # McIntyre E #8

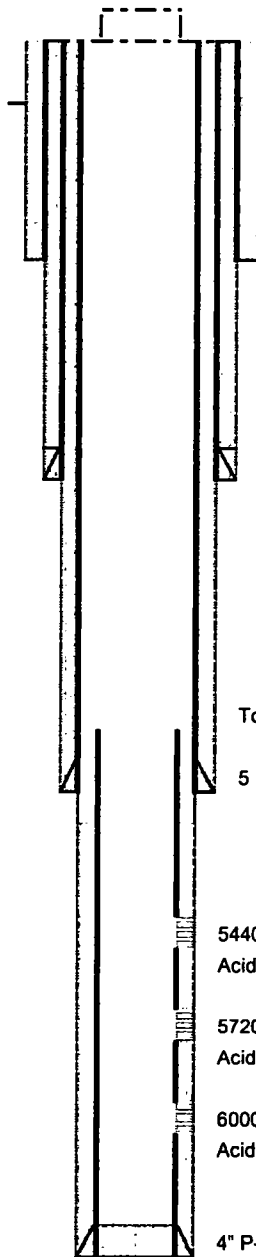
30-015-31787

Eddy County, NM

Sec 20 T17S R30E NESW 1650 FSL 2250 FWL

Spud: 7/9/2001

Elevation - 3,634



13 3/8" 48# csg @ 425'. Cmt w/450 sx, circ. 30 sx

8 5/8" 24# J-55 STC @ 1204', cmt w/625 sx, circ 65 sx.

Top of 4" liner @ 4,860' Top of cmt.??

5 12" 17# J-55 LTC @ 4967'.

1st stage cmt: 230 sx 50/50/2, circ. 58 sx

2nd stage cmt: 550 sx 35/65/6, 250 sx 50/50/2, circ 90 sx.

5440 - 5640', 32 holes

Acidized w/2500 gal 15%, frac w/68,000 gal, 70,045 # 16/30, 25,543# Super LC.

5720 - 5920', 32 holes

Acidized w/2500 gal 15%, Frac w/65,940 gal, 74,502# 16/30, 23,279 Super LC

6000 - 6200', 48 holes SF

Acidized w/2500 15%, Frac w/67,901 gal, 70,462# 16/30, 20,800# Super LC

4" P-110 11.3# liner @ 6603'.

Cmt w/140 sx, circ. 85 sx off DV tool..

*TOC 4860' per Completion report  
DV tool @ 4860'*

# COG Operating LLC

**Lease & Well #** McIntyre E #8  
30-015-31787

Eddy County, NM  
Sec 20 T17S R30E NESW 1650 FSL 2250 FWL

Spud: 7/9/2001

**WELL NAME:**

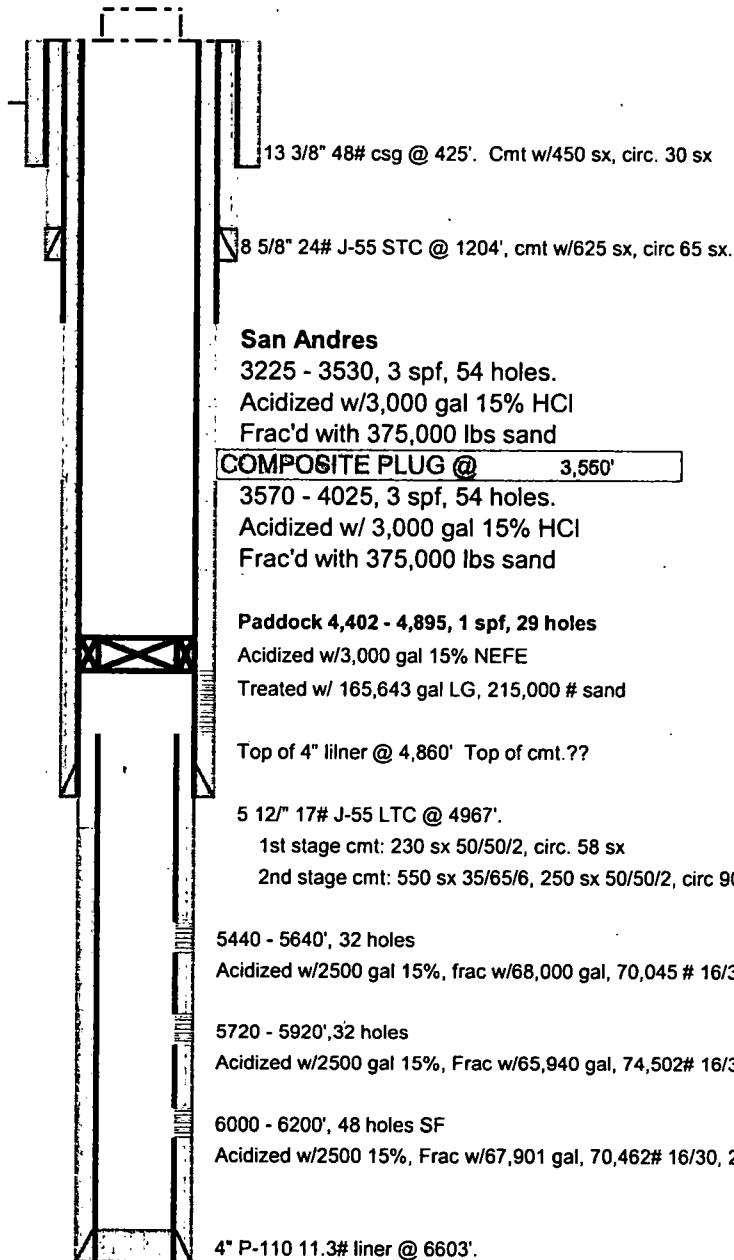
**SHL:**

**BHL:**

**FORMATION:**

**LEGAL:**

Elevation - 3,634



PBTD @ 4312'  
CIBP w/ 40'  
cmt plug on top  
@ 4352'

Interval length  
Spacing  
prop wt, prop total

**District I**  
1625 N. French Dr., Hobbs, NM 88240  
**District II**  
1301 W. Grand Avenue, Artesia, NM 88210  
**District III**  
1000 Rio Bravos Rd., Aztec, NM 87410  
**District IV**  
1220 S. St. Francis Dr., Santa Fe, NM 87505

State of New Mexico  
Energy, Minerals & Natural Resources Department  
**OIL CONSERVATION DIVISION**  
1220 South St. Francis Dr.  
Santa Fe, NM 87505

Form C-102  
Revised June 10, 2003  
Submit to Appropriate District Office  
State Lease - 4 Copies  
Fee Lease - 3 Copies

☐ AMENDED REPORT

**WELL LOCATION AND ACREAGE DEDICATION PLAT**

<sup>1</sup> API Number <b>30-015-31787</b>	<sup>2</sup> Pool Code <b>28509</b>	<sup>3</sup> Pool Name <b>Grayburg Jackson; SR-Q-G-SA</b>
<sup>4</sup> Property Code <b>302576</b>	<sup>5</sup> Property Name <b>W D McIntyre E</b>	
<sup>6</sup> OGRID No. <b>229137</b>	<sup>7</sup> Operator Name <b>COG OPERATING LLC</b>	
		<sup>8</sup> Well Number <b>8</b>
		<sup>9</sup> Elevation <b>3634</b>

<sup>10</sup> Surface Location									
UL or lot no. <b>K</b>	Section <b>20</b>	Township <b>17S</b>	Range <b>30E</b>	Lot 1/4n	Feet from the <b>1650</b>	North/South line <b>South</b>	Feet from the <b>2250</b>	East/West line <b>West</b>	County <b>Eddy</b>

<sup>11</sup> Bottom Hole Location If Different From Surface									
UL or lot no.	Section	Township	Range	Lot 1/4n	Feet from the	North/South line	Feet from the	East/West line	County
<sup>12</sup> Dedicated Acres <b>40</b>	<sup>13</sup> Joint or Infill	<sup>14</sup> Consolidation Code		<sup>15</sup> Order No.					

NO ALLOWABLE WILL BE ASSIGNED TO THIS COMPLETION UNTIL ALL INTERESTS HAVE BEEN CONSOLIDATED OR A NON-STANDARD UNIT HAS BEEN APPROVED BY THE DIVISION

	<sup>17</sup> OPERATOR CERTIFICATION	
	I hereby certify that the information contained herein is true and complete to the best of my knowledge and belief.	
	Signature <b>Kanicia Carrillo</b>	
	Printed Name <b>Regulatory Analyst</b>	
	Title and E-mail Address <b>07/17/15</b>	
	Date	
	<sup>18</sup> SURVEYOR CERTIFICATION	
	I hereby certify that the well location shown on this plat was plotted from field notes of actual surveys made by me or under my supervision, and that the same is true and correct to the best of my belief.	
	Referred Original Plat	
	Date of Survey	
	Signature and Seal of Professional Surveyor	
	Certificate Number	

RWP-5-4-18.

District I  
1625 N. French Dr., Hobbs, NM 88240  
District II  
1301 W. Grand Avenue, Artesia, NM 88210  
District III  
1400 Rio Brazos Rd., Aztec, NM 87410  
District IV  
1220 S. St. Francis Dr., Santa Fe, NM 87505

State of New Mexico  
Energy, Minerals & Natural Resources Department  
**OIL CONSERVATION DIVISION**  
1220 South St. Francis Dr.  
Santa Fe, NM 87505

Form C-102  
Revised June 10, 2003  
Submit to Appropriate District Office  
State Lease - 4 Copies  
Fee Lease - 3 Copies

☐ AMENDED REPORT

**WELL LOCATION AND ACREAGE DEDICATION PLAT**

* API Number <b>30-015-31787</b>		* Pool Code <b>96718</b>	* Pool Name <b>Loco Hills; Glorieta-Yeso</b>
* Property Code <b>302576</b>	* Property Name <b>W D McIntyre E</b>		* Well Number <b>8</b>
* OGRID No. <b>229137</b>	* Operator Name <b>COG OPERATING LLC</b>		* Elevation <b>3634</b>

**10 Surface Location**

UL or lot no.	Section	Township	Range	Lot Ida	Feet from the	North/South line	Feet from the	East/West line	County
<b>K</b>	<b>20</b>	<b>17S</b>	<b>30E</b>		<b>1650</b>	<b>South</b>	<b>2250</b>	<b>West</b>	<b>Eddy</b>

**11 Bottom Hole Location If Different From Surface**

UL or lot no.	Section	Township	Range	Lot Ida	Feet from the	North/South line	Feet from the	East/West line	County
* Dedicated Acres <b>40</b>		* Joint or Infill	* Consolidation Code		* Order No.				

NO ALLOWABLE WILL BE ASSIGNED TO THIS COMPLETION UNTIL ALL INTERESTS HAVE BEEN CONSOLIDATED OR A NON-STANDARD UNIT HAS BEEN APPROVED BY THE DIVISION:

				<b>17 OPERATOR CERTIFICATION</b> I hereby certify that the information contained herein is true and complete to the best of my knowledge and belief.  Signature <b>Kanicia Carrillo</b> Printed Name <b>Regulatory Analyst</b> Title and E-mail Address <b>07/17/15</b> Date	
				<b>18 SURVEYOR CERTIFICATION</b> I hereby certify that the well location shown on this plat was plotted from field notes of actual surveys made by me or under my supervision, and that the same is true and correct to the best of my belief. Referred Original Plat Date of Survey Signature and Seal of Professional Surveyor: Certificate Number	



**WD McIntyre E 8  
30-015-31787  
COG Operating LLC  
April 17, 2018  
Conditions of Approval**

**Work to be completed by July 17, 2018.**

- 1. Operator shall place a CIBP at 4,352' and place 40' Class C Cement on top of the CIBP. WOC and TAG.**

**Note: At a later date, THE CIBP at 4,352' and 40' cement must be drilled out in order to place a plug across the 5-1/2" casing shoe and liner top. The Glorieta Formation must also be abandoned properly at a later date.**

- 2. Must conduct a casing integrity test before perforating and fracturing. Submit results to BLM. The CIT is to be performed on the production casing to max treating pressure. Notify BLM if test fails.**
- 3. Before casing or a liner is added or replaced, prior BLM approval of the design is required. Use notice of intent Form 3160-5.**
- 4. Surface disturbance beyond the originally approved pad must have prior approval.**
- 5. Closed loop system required.**
- 6. All waste (i.e. drilling fluids, trash, salts, chemicals, sewage, gray water, etc.) created as a result of work over operations shall be safely contained and disposed of properly at a waste disposal facility. No waste material or fluid shall be disposed of on the well location or surrounding area. Porto-johns and trash containers will be on-location during fracturing operations or any other crew-intensive operations.**
- 7. Operator to have H2S monitoring equipment on location.**
- 8. A minimum of a 2000 (2M) BOP to be used. All blowout preventer (BOP) and related equipment (BOPE) shall comply with reasonable well control requirements. A two ram system with a blind ram and a pipe ram designed for the size of the work string shall be adequate. Tapered work strings will require an additional pipe ram. The manifold shall comply with Onshore Oil and Gas Order #2 Attachment I (2M Diagrams of Choke Manifold Equipment). The accumulator system shall have an immediately available power source to close the rams and retain 200 psi above pre-charge. The pre-charge test shall follow requirements in Onshore Order #2.**

9. Subsequent sundry required detailing work done and completion report for the formation. Operator to include new well plat and well bore schematic of current well condition when work is complete.
10. See attached for general requirements.

**JAM 041718**

**BUREAU OF LAND MANAGEMENT**  
**Carlsbad Field Office**  
**620 East Greene Street**  
**Carlsbad, New Mexico 88220**  
**575-234-5972**

**General Requirements for Plug Backs**

Failure to comply with the following Conditions of Approval may result in a Notice of Incidents of Noncompliance (INC) in accordance with 43 CFR 3163.1.

1. Plugging operations shall commence within ninety (90) days from this approval.

**If you are unable to plug back the well by the 90<sup>th</sup> day provide this office, prior to the 90<sup>th</sup> day, with the reason for not meeting the deadline and a date when we can expect the well to be plugged back. Failure to do so will result in enforcement action.**

2. Notification: Contact the appropriate BLM office at least 24 hours prior to the commencing of any plug back operations. For wells in Eddy County, call 575-361-2822.

3. Blowout Preventers: A blowout preventer (BOP), as appropriate, shall be installed before commencing any plugging operation. The BOP must be installed and maintained as per API and manufacturer recommendations. The minimum BOP requirement is a 2M system for a well not deeper than 9,090 feet; a 3M system for a well not deeper than 13,636 feet; and a 5M system for a well not deeper than 22,727 feet.

4. Mud Requirement: Mud shall be placed between all plugs. Minimum consistency of plugging mud shall be obtained by mixing at the rate of 25 sacks (50 pounds each) of gel per 100 barrels of brine water. Minimum nine (9) pounds per gallon.

5. Cement Requirement: Sufficient cement shall be used to bring any required plug to the specified depth and length. Any given cement volumes on the proposed plugging procedure are merely estimates and are not final. Unless specific approval is received, no plug except the surface plug shall be less than 25 sacks of cement. Any plug that requires a tag will have a minimum WOC time of 4 hours.

In lieu of a cement plug across perforations in a cased hole (not for any other plugs), a bridge plug set within 50 feet to 100 feet above the perforations shall be capped with 25 sacks of cement.

**Before pumping cement on top of CIBP, tag will be required to verify depth. Based on depth, a tag of the cement may be deemed necessary.**

Unless otherwise specified in the approved procedure, the cement plug shall consist of either Neat Class "C", for up to 7,500 feet of depth or Neat Class "H", for deeper than 7,500 feet plugs.

6. Subsequent Plug back Reporting: Within 30 days after plug back work is completed, file one original and three copies of the Subsequent Report, Form 3160-5 to BLM. The report should give in detail the manner in which the plug back work was carried out, the extent (by depths) of cement plugs placed, and the size and location (by depths) of casing left in the well. Show date work was completed.

7. Trash: All trash, junk and other waste material shall be contained in trash cages or bins to prevent scattering and will be removed and deposited in an approved sanitary landfill. Burial on site is not permitted.