

RECEIVED

Form 3160-4
(August 2007)

UNITED STATES
DEPARTMENT OF THE INTERIOR
BUREAU OF LAND MANAGEMENT

FORM APPROVED
OMB No. 1004-0137
Expires: July 31, 2010

WELL COMPLETION OR RECOMPLETION REPORT AND LOG
DISTRICT II-ARTESIA

5. Lease Serial No.
NMNM86908

6. If Indian, Allottee or Tribe Name

7. Unit or CA Agreement Name and No.
NMNM137575

8. Lease Name and Well No.
CEDAR CANYON 21-22 FEDERAL COM 33H

9. API Well No.
30-015-44133-00-S1

10. Field and Pool, or Exploratory
PIERCE CROSSING-BONE SPRING

11. Sec., T., R., M., or Block and Survey
or Area Sec 21 T24S R29E Mer NMP

12. County or Parish
EDDY

13. State
NM

14. Date Spudded
05/10/2017

15. Date T.D. Reached
06/20/2017

16. Date Completed
☐ D & A ☒ Ready to Prod.
08/06/2017

17. Elevations (DF, KB, RT, GL)*
2928 GL

18. Total Depth: MD 19951
TVD 10002

19. Plug Back T.D.: MD 19790
TVD 9999

20. Depth Bridge Plug Set: MD
TVD

21. Type Electric & Other Mechanical Logs Run (Submit copy of each)
MUDLOG

22. Was well cored? ☒ No ☐ Yes (Submit analysis)
Was DST run? ☒ No ☐ Yes (Submit analysis)
Directional Survey? ☐ No ☒ Yes (Submit analysis)

23. Casing and Liner Record (Report all strings set in well)

Hole Size	Size/Grade	Wt. (#/ft.)	Top (MD)	Bottom (MD)	Stage Cementer Depth	No. of Sk. & Type of Cement	Slurry Vol. (BBL)	Cement Top*	Amount Pulled
17.500	13.375 J55	54.5	0	542		633	190	0	
12.250	9.625 L80	47.0	0	9183	2942	2235	1163	1305	
8.500	5.500 P110	20.0	8918	19842		1730	509	8918	

24. Tubing Record

Size	Depth Set (MD)	Packer Depth (MD)	Size	Depth Set (MD)	Packer Depth (MD)	Size	Depth Set (MD)	Packer Depth (MD)

25. Producing Intervals

Formation	Top	Bottom	Perforated Interval	Size	No. Holes	Perf. Status
A) BONE SPRING 3RD	9908	19667	9908 TO 19667	0.420	1280	ACTIVE - Bone Spring 3rd
B)						
C)						
D)						

27. Acid, Fracture, Treatment, Cement Squeeze, Etc.

Depth Interval	Amount and Type of Material
9908 TO 19667	834972G SLICKWATER + 3448200G 7.5% HCL ACID + 3475332G LINEAR GEL + 3730776G CROSSLINK

28. Production - Interval A

Date First Produced	Test Date	Hours Tested	Test Production	Oil BBL	Gas MCF	Water BBL	Oil Gravity Corr. API	Gas Gravity	Production Method
08/11/2017	09/14/2017	24	→	2344.0	5779.0	5908.0			FLows FROM WELL
Choke Size	Tbg. Press. Flwg. SI	Csg. Press.	24 Hr. Rate	Oil BBL	Gas MCF	Water BBL	Gas:Oil Ratio	Well Status	
64/64	SI	1768.0	→	2344	5779	5908	2465	POW	

28a. Production - Interval B

Date First Produced	Test Date	Hours Tested	Test Production	Oil BBL	Gas MCF	Water BBL	Oil Gravity Corr. API	Gas Gravity	Production Method
			→						
Choke Size	Tbg. Press. Flwg. SI	Csg. Press.	24 Hr. Rate	Oil BBL	Gas MCF	Water BBL	Gas:Oil Ratio	Well Status	
	SI		→						

ACCEPTED FOR RECORD

APR 28 2018

BUREAU OF LAND MANAGEMENT

OFFICE

(See Instructions and spaces for additional data on reverse side)
ELECTRONIC SUBMISSION #392980 VERIFIED BY THE BLM WELL INFORMATION SYSTEM

** BLM REVISED ** BLM REVISED ** BLM REVISED ** BLM REVISED ** BLM REVISED ** BLM REVISED **

Reclamation Due: 2/6/2018

28b. Production - Interval C									
Date First Produced	Test Date	Hours Tested	Test Production	Oil BBL	Gas MCF	Water BBL	Oil Gravity Corr. API	Gas Gravity	Production Method
			→						
Choke Size	Tbg. Press. Flwg. SI	Csg. Press.	24 Hr. Rate	Oil BBL	Gas MCF	Water BBL	Gas:Oil Ratio	Well Status	
			→						

28c. Production - Interval D									
Date First Produced	Test Date	Hours Tested	Test Production	Oil BBL	Gas MCF	Water BBL	Oil Gravity Corr. API	Gas Gravity	Production Method
			→						
Choke Size	Tbg. Press. Flwg. SI	Csg. Press.	24 Hr. Rate	Oil BBL	Gas MCF	Water BBL	Gas:Oil Ratio	Well Status	
			→						

29. Disposition of Gas(Sold, used for fuel, vented, etc.)
SOLD

30. Summary of Porous Zones (Include Aquifers):

Show all important zones of porosity and contents thereof: Cored intervals and all drill-stem tests, including depth interval tested, cushion used, time tool open, flowing and shut-in pressures and recoveries.

31. Formation (Log) Markers

Formation	Top	Bottom	Descriptions, Contents, etc.	Name	Top
					Meas. Depth
BELL CANYON	2957	3800	OIL, GAS, WATER	RUSTLER	300
CHERRY CANYON	3801	5007	OIL, GAS, WATER	SALADO	587
BRUSHY CANYON	5008	6644	OIL, GAS, WATER	CASTILE	1238
BONE SPRING	6645	7550	OIL, GAS, WATER	DELAWARE	2906
BONE SPRING 1ST	7551	8390	OIL, GAS, WATER	BELL CANYON	2957
BONE SPRING 2ND	8391	9474	OIL, GAS, WATER	CHERRY CANYON	3801
BONE SPRING 3RD	9475	9999	OIL, GAS, WATER	BRUSHY CANYON	5008
				BONE SPRING	6645

32. Additional remarks (include plugging procedure):
52. FORMATION (LOG) MARKERS CONTD.

1ST BONE SPRING 7551'M
2ND BONE SPRING 8391'M
3RD BONE SPRING 9475'M

Logs were mailed 10/25/17.

33. Circle enclosed attachments:

- | | | | |
|---|--------------------|---------------|-----------------------|
| 1. Electrical/Mechanical Logs (1 full set req'd.) | 2. Geologic Report | 3. DST Report | 4. Directional Survey |
| 5. Sundry Notice for plugging and cement verification | 6. Core Analysis | 7 Other: | |

34. I hereby certify that the foregoing and attached information is complete and correct as determined from all available records (see attached instructions):

Electronic Submission #392980 Verified by the BLM Well Information System.

For OXY USA INC, sent to the Carlsbad

Committed to AFMSS for processing by DUNCAN WHITLOCK on 11/03/2017 (18DW0016SE)

Name (please print) DAVID STEWART

Title SR REGULATORY ADVISOR

Signature (Electronic Submission)

Date 10/24/2017

Title 18 U.S.C. Section 1001 and Title 43 U.S.C. Section 1212, make it a crime for any person knowingly and willfully to make to any department or agency of the United States any false, fictitious or fraudulent statements or representations as to any matter within its jurisdiction.

** REVISED ** REVISED ** REVISED ** REVISED ** REVISED ** REVISED ** REVISED ** REVISED **

RECEIVED

District I
1625 N. French Dr., Hobbs, NM 88240
Phone: (575) 393-6161 Fax: (575) 393-0720
District II
811 S. First St., Artesia, NM 88210
Phone: (575) 748-1283 Fax: (575) 748-9720
District III
1000 Rio Grande Road, Aztec, NM 87410
Phone: (505) 334-6178 Fax: (505) 334-6170
District IV
1220 S. St. Francis Dr., Santa Fe, NM 87505
Phone: (505) 476-3460 Fax: (505) 476-3462

State of New Mexico
Energy, Minerals & Natural Resources Department
OIL CONSERVATION DIVISION
1220 South St. Francis
Santa Fe, NM 87505

Form C-102
Revised August 1, 2011
Submit one copy to appropriate
District Office

☒ AMENDED REPORT
(As-Drilled)

WELL LOCATION AND ACREAGE DEDICATION PLAT

API Number 30-015-44133	Pool Code 96473	Pool Name Pierce Crossing Bone Spring, East
Property Code 37654	Property Name CEDAR CANYON "21-22" FEDERAL COM	Well Number 33H
OGRID No. 16696	Operator Name OXY USA INC.	Elevation 2928.0'

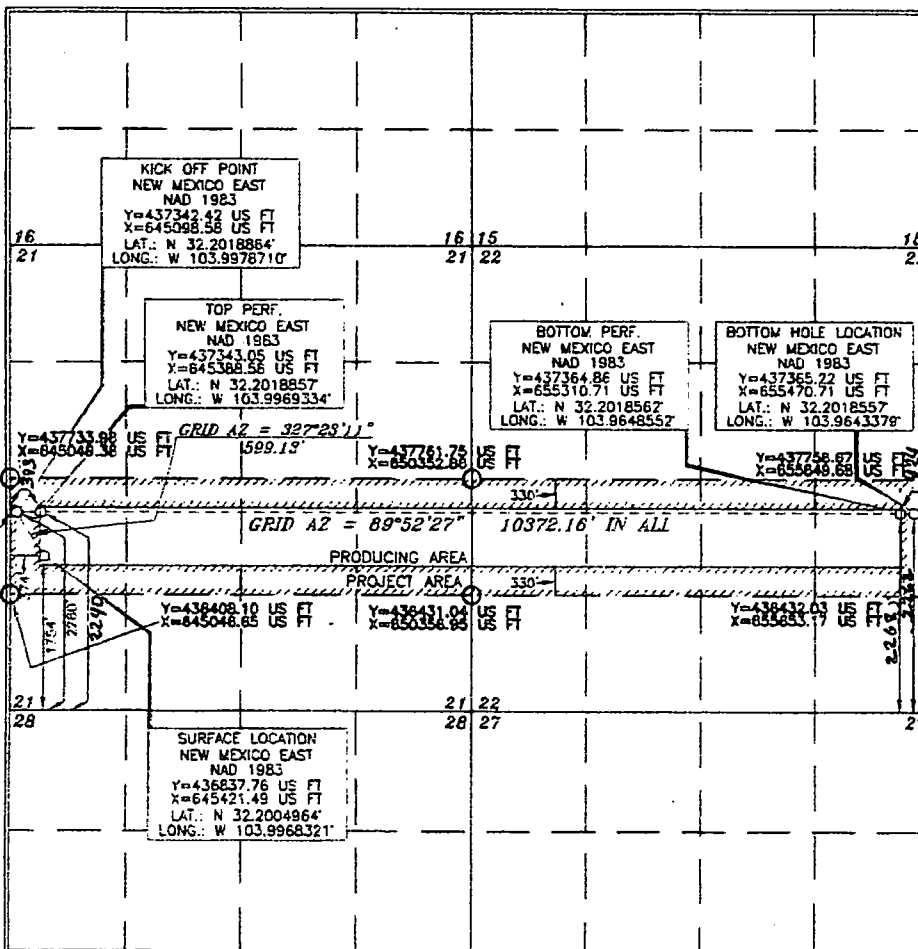
Surface Location

UL or lot no.	Section	Township	Range	Lot Ida	Feet from the	North/South line	Feet from the	East/West line	County
L	21	24 SOUTH	29 EAST, N.M.P.M.		1754'	SOUTH	374'	WEST	EDDY

Bottom Hole Location If Different From Surface

UL or lot no.	Section	Township	Range	Lot Ida	Feet from the	North/South line	Feet from the	East/West line	County
I	22	24 SOUTH	29 EAST, N.M.P.M.		2260' 2262'	SOUTH	100' 140'	EAST	EDDY
Dedicated Acres 320	Joint or Infill Y	Consolidation Code	Order No.	TD- 2262 FSL 140 FEL BP- 2268 FSL 424 FEL TP- 2240 FSL 393 FWL					

No allowable will be assigned to this completion until all interests have been consolidated or a non-standard unit has been approved by the division.



OPERATOR CERTIFICATION

I hereby certify that the information contained herein is true and complete to the best of my knowledge and belief, and that this organization either owns a working interest or unleased mineral interest in the land including the proposed bottom hole location or has a right to drill this well at this location pursuant to a contract with an owner of such a mineral or working interest, or to a voluntary pooling agreement or a compulsory pooling order heretofore approved by the division.

7/31/17
Signature: **Jana Mendiola**
Printed Name: **Jana Mendiola**
E-mail Address: **jana.mendiola@oxy.com**

SURVEYOR CERTIFICATION

I hereby certify that the well location shown on this plat was plotted from field notes of actual surveys made by me or under my supervision, and that the same is true and correct to the best of my belief.

15079
Date of Survey: **JANUARY 24, 2017**
Signature and Seal of Professional Land Surveyor

2/9/2017
Certificate Number: **15079**

WFO# 170124WL-0-XY (KA)