

UNITED STATES
DEPARTMENT OF THE INTERIOR
BUREAU OF LAND MANAGEMENT

RECEIVED

OCD Artesia
AUG 14 2018FORM APPROVED
OMB No. 1004-0137
Expires: July 31, 2010WELL COMPLETION OR RECOMPLETION REPORT AND LOG
DISTRICT II-ARTESIA O.C.D.5. Lease Serial No.
NMNM57273

- 1a. Type of Well ☒ Oil Well ☐ Gas Well ☐ Dry ☐ Other
b. Type of Completion ☒ New Well ☐ Work Over ☐ Deepen ☐ Plug Back ☐ Diff. Resvr.
Other _____

6. If Indian, Allottee or Tribe Name

7. Unit or CA Agreement Name and No.
NMNM1379682. Name of Operator
OXY USA INCContact: JANA MENDIOLA
E-Mail: janalyn_mendiola@oxy.com8. Lease Name and Well No.
PALLADIUM MDP1-7-6 FEDERAL COM 2H3. Address
MIDLAND, TX 797103a. Phone No. (include area code)
Ph: 432-685-59369. API Well No.
30-015-44299-00-S1

4. Location of Well (Report location clearly and in accordance with Federal requirements)*
Sec 7 T24S R31E Mer NMP
At surface SWSW 609FSL 742FWL 32.226265 N Lat, 103.823265 W Lon
Sec 7 T24S R31E Mer NMP
At top prod interval reported below SWSW 380FSL 1296FWL 32.225526 N Lat, 103.821591 W Lon
Sec 6 T24S R31E Mer NMP
At total depth NWNW 196FNL 1247FWL 32.253157 N Lat, 103.821566 W Lon

10. Field and Pool, or Exploratory
COTTON DRAW11. Sec., T., R., M., or Block and Survey
or Area Sec 7 T24S R31E Mer NMP12. County or Parish
EDDY13. State
NM14. Date Spudded
10/10/201715. Date T.D. Reached
12/31/201716. Date Completed
☐ D & A ☒ Ready to Prod.
02/24/201817. Elevations (DF, KB, RT, GL)*
3531 GL18. Total Depth: MD
TVD20085
1003419. Plug Back T.D.: MD
TVD20023
1003420. Depth Bridge Plug Set: MD
TVD21. Type Electric & Other Mechanical Logs Run (Submit copy of each)
MUDLOG22. Was well cored? ☒ No ☐ Yes (Submit analysis)
Was DST run? ☒ No ☐ Yes (Submit analysis)
Directional Survey? ☐ No ☒ Yes (Submit analysis)

23. Casing and Liner Record (Report all strings set in well)

Hole Size	Size/Grade	Wt. (#/ft.)	Top (MD)	Bottom (MD)	Stage Cementer Depth	No. of Sk. & Type of Cement	Slurry Vol. (BBL)	Cement Top*	Amount Pulled
17.500	13.375 J55	54.5	0	661		845	204	0	
12.250	9.625 L80	47.0	0	4304		1519	435	0	
8.500	5.500 P110	20.0	0	20070		3767	950	206	

24. Tubing Record

Size	Depth Set (MD)	Packer Depth (MD)	Size	Depth Set (MD)	Packer Depth (MD)	Size	Depth Set (MD)	Packer Depth (MD)

25. Producing Intervals

Formation	Top	Bottom	Perforated Interval	Size	No. Holes	Perf. Status
A) BONE SPRING 2ND	10053	19918	10053 TO 19918	0.370	1920	ACTIVE - 2nd Bone Spring
B)						
C)						
D)						

27. Acid, Fracture, Treatment, Cement Squeeze, Etc.

Depth Interval	Amount and Type of Material
10053 TO 19918	15798930G SLICK WATER + 49854G 7.5% HCL ACID W/ 19256690# SAND

28. Production - Interval A

Date First Produced	Test Date	Hours Tested	Test Production	Oil BBL	Gas MCF	Water BBL	Oil Gravity Corr. API	Gas Gravity	Production Method
02/25/2018	03/03/2018	24	→	3015.0	4039.0	5891.0			FLows FROM WELL
Choke Size	Tbg. Press. Flwg.	Csg. Press.	24 Hr. Rate	Oil BBL	Gas MCF	Water BBL	Gas:Oil Ratio	Well Status	
86/128	SI	1049.0	→	3015	4039	5891	1340	POW	

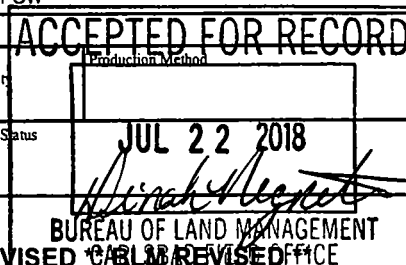
28a. Production - Interval B

Date First Produced	Test Date	Hours Tested	Test Production	Oil BBL	Gas MCF	Water BBL	Oil Gravity Corr. API	Gas Gravity	Production Method
			→						
Choke Size	Tbg. Press. Flwg.	Csg. Press.	24 Hr. Rate	Oil BBL	Gas MCF	Water BBL	Gas:Oil Ratio	Well Status	
SI			→						

(See Instructions and spaces for additional data on reverse side)

ELECTRONIC SUBMISSION #421185 VERIFIED BY THE BLM WELL INFORMATION SYSTEM

** BLM REVISED ** BLM REVISED ** BLM REVISED ** BLM REVISED ** BLM REVISED



Reclamation Due: 8/24/18

28b. Production - Interval C

Date First Produced	Test Date	Hours Tested	Test Production	Oil BBL	Gas MCF	Water BBL	Oil Gravity Corr. API	Gas Gravity	Production Method
Choke Size	Tbg. Press. Flwg. SI	Csg. Press.	24 Hr. Rate	Oil BBL	Gas MCF	Water BBL	Gas:Oil Ratio	Well Status	

28c. Production - Interval D

Date First Produced	Test Date	Hours Tested	Test Production	Oil BBL	Gas MCF	Water BBL	Oil Gravity Corr. API	Gas Gravity	Production Method
Choke Size	Tbg. Press. Flwg. SI	Csg. Press.	24 Hr. Rate	Oil BBL	Gas MCF	Water BBL	Gas:Oil Ratio	Well Status	

29. Disposition of Gas(Sold, used for fuel, vented, etc.)
SOLD

30. Summary of Porous Zones (Include Aquifers):

Show all important zones of porosity and contents thereof: Cored intervals and all drill-stem tests, including depth interval tested, cushion used, time tool open, flowing and shut-in pressures and recoveries.

31. Formation (Log) Markers

Formation	Top	Bottom	Descriptions, Contents, etc.	Name	Top
					Meas. Depth
BELL CANYON	4305	5175	OIL, GAS, WATER	RUSTLER	683
CHERRY CANYON	5176	6436	OIL, GAS, WATER	SALADO	960
BRUSHY CANYON	6437	8216	OIL, GAS, WATER	CASTILE	2850
BONE SPRING	8217	9192	OIL, GAS, WATER	DELAWARE	4283
BONE SPRING 1ST	9193	9896	OIL, GAS, WATER	BELL CANYON	4305
BONE SPRING 2ND	9897	10034	OIL, GAS, WATER	CHERRY CANYON	5176
				BRUSHY CANYON	6437
				BONE SPRING	8217

32. Additional remarks (include plugging procedure):

52. FORMATION (LOG) MARKERS CONTD.

1ST BONE SPRING 9193' MD
2ND BONE SPRING 9897' MD

Logs were mailed 5/24/18.

33. Circle enclosed attachments:

1. Electrical/Mechanical Logs (1 full set req'd.) 2. Geologic Report 3. DST Report 4. Directional Survey
5. Sundry Notice for plugging and cement verification 6. Core Analysis 7. Other:

34. I hereby certify that the foregoing and attached information is complete and correct as determined from all available records (see attached instructions):

Electronic Submission #421185 Verified by the BLM Well Information System.

For OXY USA INC, sent to the Carlsbad

Committed to AFMSS for processing by DUNCAN WHITLOCK on 05/25/2018 (18DW0159SE)

Name (please print) DAVID STEWART

Title SR REGULATORY ADVISOR

Signature _____ (Electronic Submission)

Date 05/23/2018

Title 18 U.S.C. Section 1001 and Title 43 U.S.C. Section 1212, make it a crime for any person knowingly and willfully to make to any department or agency of the United States any false, fictitious or fraudulent statements or representations as to any matter within its jurisdiction.

**** REVISED ** REVISED ** REVISED ** REVISED ** REVISED ** REVISED ** REVISED ** REVISED ****

Additional data for transaction #421185 that would not fit on the form

32. Additional remarks, continued

Log Header, Directional Survey, As-Drilled Amended C-102 plat & WBD are attached.

RECEIVED

District I
1625 N. French Dr., Hobbs, NM 88240
Phone: (575) 393-6161 Fax: (575) 393-0720

District II
811 S. First St., Artesia, NM 88210
Phone: (575) 748-1283 Fax: (575) 748-9720

District III
1000 Rio Grande Road, Aztec, NM 87410
Phone: (505) 334-6178 Fax: (505) 334-6170

District IV
1220 S. St. Francis Dr., Santa Fe, NM 87503
Phone: (505) 476-3460 Fax: (505) 476-3463

State of New Mexico
Energy, Minerals & Natural Resources Department
OIL CONSERVATION DIVISION
1220 South St. Francis Dr.
Santa Fe, NM 87505 DISTRICT II-ARTESIA O.C.D.

Form C-102
Revised August 1, 2011
Submit one copy to appropriate
District Office

☒ AMENDED REPORT
(As-Drilled)

WELL LOCATION AND ACREAGE DEDICATION PLAT

API Number 30-015-44299	Pool Code 13367	Pool Name COTTON DRAW; BONE SPRING
Property Code 317687	Property Name PALLADIUM MDP1 "7-6" FEDERAL COM	Well Number 2H
OGRID No. 16696	Operator Name OXY USA INC.	Elevation 3530.9'

Surface Location

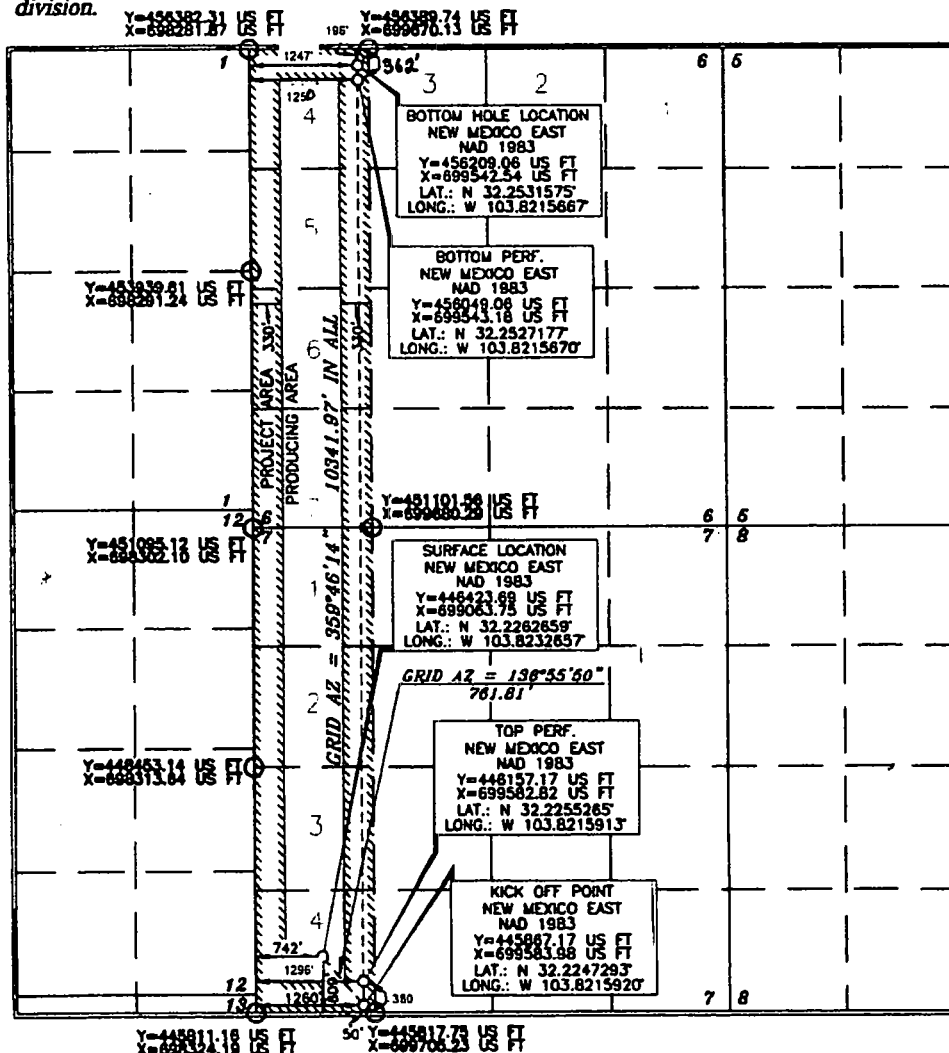
UL or lot no.	Section	Township	Range	Lot Idn	Feet from the	North/South line	Feet from the	East/West line	County
4	7	24 SOUTH	31 EAST, N.M.P.M.		609'	SOUTH	742'	WEST	EDDY

Bottom Hole Location If Different From Surface

UL or lot no.	Section	Township	Range	Lot Idn	Feet from the	North/South line	Feet from the	East/West line	County
4	6	24 SOUTH	31 EAST, N.M.P.M.		196'	NORTH	1247'	WEST	EDDY

Dedicated Acres	Joint or Infill	Consolidation Code	Order No.
334.89	Y		NSL-7548 TP: 380 FSL 1296 FWL, BP: 362 FNL 1250 FWL

No allowable will be assigned to this completion until all interests have been consolidated or a non-standard unit has been approved by the division.



OPERATOR CERTIFICATION

I hereby certify that the information contained herein is true and complete to the best of my knowledge and belief, and that this organization either owns a working interest or has leased mineral interest in the land including the proposed bottom hole location or has a right to drill this well at this location pursuant to a contract with an owner of such a mineral or working interest, or to a voluntary pooling agreement or a compulsory pooling order heretofore entered by the division.

Sarah Mitchell 2/9/2018
Signature Date

Sarah Mitchell

Printed Name
sarah_mitchell@oxy.com
E-mail Address

SURVEYOR CERTIFICATION

I hereby certify that the information shown on this plat was prepared from field notes or actual surveys made by me or under my supervision and that the same is true and correct to the best of my belief.

DATE 28 JUNE 2016
15079
Date of Survey
Signature and Seal of Professional Land Surveyor

9/22/2016
Certificate Number 15079

WO# 160628WL-a-XY (Rev. A) (KA)