

District I  
1625 N. French Dr., Hobbs, NM 88240  
Phone: (575) 393-6161 Fax: (575) 393-0720  
District II  
811 S. First St., Artesia, NM 88210  
Phone: (575) 748-1283 Fax: (575) 748-9720  
District III  
1000 Rio Brazos Road, Aztec, NM 87410  
Phone: (505) 334-6178 Fax: (505) 334-6170  
District IV  
1220 S. St. Francis Dr., Santa Fe, NM 87505  
Phone: (505) 476-3460 Fax: (505) 476-3462

State of New Mexico  
Energy, Minerals & Natural Resources  
OIL CONSERVATION DIVISION  
1220 South St. Francis Dr.  
Santa Fe, NM 87505

Form C-102  
Revised August 1, 2011  
submit one copy to appropriate  
District Office  
☐ AMENDED REPORT

AUG 17 2018

RECEIVED

WELL LOCATION AND ACREAGE DEDICATION PLAT

|  |   |  |
|--|---|--|
| <sup>1</sup> API Number<br><b>30-015-45193</b> | <sup>2</sup> Pool Code<br><b>98220</b>                      | <sup>3</sup> Pool Name<br><b>Purple Sage; Wolfcamp</b> |
| <sup>4</sup> Property Code<br><b>322241</b>    | <sup>5</sup> Property Name<br><b>BRUSHY DRAW 30 FEDERAL</b> | <sup>6</sup> Well Number<br><b>126H</b>                |
| <sup>7</sup> OGRID No.<br><b>260737</b>        | <sup>8</sup> Operator Name<br><b>BOPCO, L.P.</b>            | <sup>9</sup> Elevation<br><b>3108'</b>                 |

<sup>10</sup> Surface Location

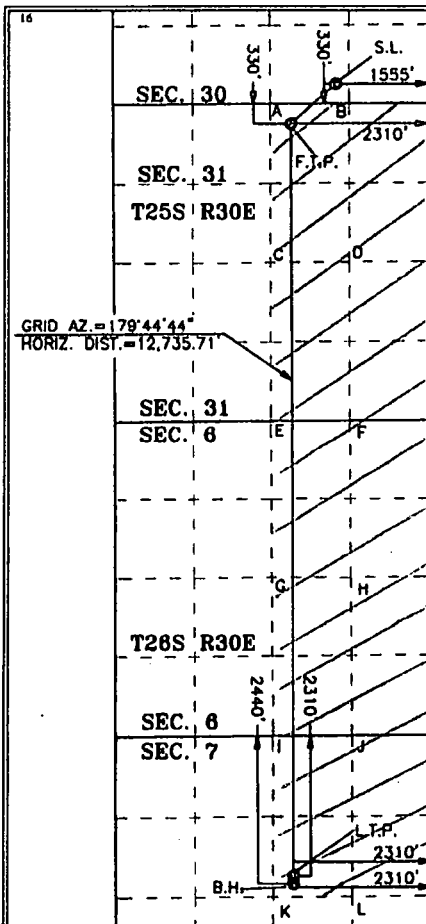
| UL or lot no. | Section | Township | Range | Lot Idn | Feet from the | North/South line | Feet from the | East/West line | County |
|---------------|---------|----------|-------|---------|---------------|------------------|---------------|----------------|--------|
| O             | 30      | 25 S     | 30 E  |         | 330           | SOUTH            | 1,555         | EAST           | EDDY   |

<sup>11</sup> Bottom Hole Location If Different From Surface

| UL or lot no. | Section | Township | Range | Lot Idn | Feet from the | North/South line | Feet from the | East/West line | County |
|---------------|---------|----------|-------|---------|---------------|------------------|---------------|----------------|--------|
| G             | 7       | 26 S     | 30 E  |         | 2,440         | NORTH            | 2,310         | EAST           | EDDY   |

|   |                               |                                  |  |
|---|-------------------------------|----------------------------------|--|
| <sup>12</sup> Dedicated Acres<br><b>800</b> | <sup>13</sup> Joint or Infill | <sup>14</sup> Consolidation Code | <sup>15</sup> Order No.<br><b>MSR-Pending Approval</b> |
|---|-------------------------------|----------------------------------|--|

No allowable will be assigned to this completion until all interests have been consolidated or a non-standard unit has been approved by the division.



GEODETIC COORDINATES  
NAD 27 NME  
SURFACE LOCATION  
Y= 398,317.4  
X= 629,083.5  
LAT.= 32.094405°N  
LONG.= 103.916566°W  
FIRST TAKE POINT  
NAD 27 NME  
Y= 397,652.1  
X= 628,311.0  
LAT.= 32.092584°N  
LONG.= 103.918004°W

GEODETIC COORDINATES  
NAD 83 NME  
SURFACE LOCATION  
Y= 398,375.4  
X= 670,248.8  
LAT.= 32.094528°N  
LONG.= 103.917049°W  
FIRST TAKE POINT  
NAD 83 NME  
Y= 397,710.1  
X= 669,486.1  
LAT.= 32.092709°N  
LONG.= 103.919487°W

CORNER COORDINATES TABLE  
NAD 27 NME  
A - Y= 397,979.8 N, X= 627,858.6 E  
B - Y= 397,988.4 N, X= 629,289.5 E  
C - Y= 395,324.1 N, X= 627,863.2 E  
D - Y= 395,333.0 N, X= 629,294.2 E  
E - Y= 392,866.7 N, X= 627,867.8 E  
F - Y= 392,878.8 N, X= 629,298.2 E  
G - Y= 390,011.6 N, X= 627,980.2 E  
H - Y= 390,021.2 N, X= 629,319.9 E  
I - Y= 387,354.0 N, X= 628,012.6 E  
J - Y= 387,364.5 N, X= 629,340.2 E  
K - Y= 384,698.5 N, X= 628,018.6 E  
L - Y= 384,708.7 N, X= 629,348.2 E

CORNER COORDINATES TABLE  
NAD 83 NME  
A - Y= 398,037.8 N, X= 669,143.7 E  
B - Y= 398,048.4 N, X= 670,474.6 E  
C - Y= 395,382.0 N, X= 669,148.4 E  
D - Y= 395,390.9 N, X= 670,479.4 E  
E - Y= 392,724.6 N, X= 669,153.0 E  
F - Y= 392,734.7 N, X= 670,483.5 E  
G - Y= 390,089.4 N, X= 669,175.5 E  
H - Y= 390,079.0 N, X= 670,505.2 E  
I - Y= 387,411.8 N, X= 669,198.0 E  
J - Y= 387,422.3 N, X= 670,525.8 E  
K - Y= 384,756.2 N, X= 669,204.1 E  
L - Y= 384,766.4 N, X= 670,533.7 E

LAST TAKE POINT  
NAD 27 NME  
Y= 385,046.8  
X= 628,368.6  
LAT.= 32.057932°N  
LONG.= 103.918981°W  
BOTTOM HOLE LOCATION  
NAD 27 NME  
Y= 384,916.8  
X= 628,387.1  
LAT.= 32.057574°N  
LONG.= 103.918981°W

LAST TAKE POINT  
NAD 83 NME  
Y= 385,104.5  
X= 669,352.1  
LAT.= 32.058056°N  
LONG.= 103.919463°W  
BOTTOM HOLE LOCATION  
NAD 83 NME  
Y= 384,974.5  
X= 669,352.1  
LAT.= 32.057699°N  
LONG.= 103.919463°W

<sup>17</sup> OPERATOR CERTIFICATION

I hereby certify that the information contained herein is true and complete to the best of my knowledge and belief, and that this organization either owns a working interest or undivided mineral interest in the land including the proposed bottom hole location or has a right to drill this well at this location pursuant to a contract with an owner of such a mineral or working interest, or to a voluntary pooling agreement or a compulsory pooling order heretofore entered by the division.

**Kelly Kardos** 9/22/17  
Signature Date

Kelly Kardos

Printed Name

kelly\_kardos@xtoenergy.com

E-mail Address

<sup>18</sup> SURVEYOR CERTIFICATION

I hereby certify that the well location shown on this plat was plotted from field notes of actual surveys made by me or under my supervision, and that the same is true and correct to the best of my belief.

08-16-2017

Date of Survey

Signature and Seal of  
Professional Surveyor:

**MARK DILLON HARP** 23786  
Certificate Number



RR

2017061890

RWP 8-21-18

APD ID: 10400024541

Submission Date: 12/11/2017

Operator Name: BOPCO LP

Well Name: BRUSHY DRAW 30 FEDERAL

Well Number: 126H

Well Type: CONVENTIONAL GAS WELL

Well Work Type: Drill

Highlighted data  
reflects the most  
recent changes

Show Final Text

## Section 1 - Geologic Formations

| Formation ID | Formation Name  | Elevation | True Vertical Depth | Measured Depth | Lithologies                  | Mineral Resources                           | Producing Formation |
|--------------|-----------------|-----------|---------------------|----------------|------------------------------|---|---------------------|
| 1            | ---             | 3108      | 0                   | 0              | ALLUVIUM, OTHER : Quaternary | NONE  | No                  |
| 2            | RUSTLER         | 2341      | 767                 | 767            | SANDSTONE                    | USEABLE WATER                               | No                  |
| 3            | TOP SALT        | 2098      | 1010                | 1010           | SALT                         | NONE  | No                  |
| 4            | BASE OF SALT    | -184      | 3292                | 3292           | SALT                         | NONE  | No                  |
| 5            | DELAWARE        | -374      | 3482                | 3482           | SANDSTONE                    | NATURAL GAS, OIL, OTHER : Produced Water    | No                  |
| 6            | BONE SPRING 1ST | -5107     | 8215                | 8215           | SANDSTONE                    | NATURAL GAS, POTASH, OTHER : Produced Water | No                  |
| 7            | BONE SPRING 2ND | -5914     | 9022                | 9022           | SANDSTONE                    | NATURAL GAS, OIL, OTHER : Produced Water    | No                  |
| 8            | BONE SPRING 3RD | -7015     | 10123               | 10123          | SANDSTONE                    | NATURAL GAS, OIL, OTHER : Produced Water    | No                  |
| 9            | WOLFCAMP        | -7554     | 10662               | 10662          | SHALE                        | NATURAL GAS, OIL, OTHER : Produced Water    | Yes                 |

## Section 2 - Blowout Prevention

Pressure Rating (PSI): 5M

Rating Depth: 10887

**Equipment:** The blow out preventer equipment (BOP) for this well consists of a 13-5/8" minimum 5M Hydril and a 13-5/8" minimum 5M Double Ram BOP. Max bottom hole pressure should not exceed 3945 psi.

**Requesting Variance?** YES

**Variance request:** A variance is requested to allow use of a flex hose as the choke line from the BOP to the Choke Manifold. If this hose is used, a copy of the manufacturer's certification and pressure test chart will be kept on the rig. Attached is an example of a certification and pressure test chart. The manufacturer does not require anchors.

**Testing Procedure:** All BOP testing will be done by an independent service company. Annular pressure tests will be limited to 50% of the working pressure. When nipping up on the 13-5/8" 5M bradenhead and flange, the BOP test will be limited to 5000psi. All BOP tests will include a low pressure test as per BLM regulations. The 5M BOP diagrams are attached. Blind rams will be functioned tested each trip, pipe rams will be functioned tested each day.

**Choke Diagram Attachment:**

BD\_30\_Fed\_126H\_5M\_Choke\_20171211054947.pdf