

Division I  
1625 N. French Dr., Hobbs, NM 88240  
Phone: (505) 393-6161 Fax: (505) 393-0720  
Division II  
811 S. First St., Artesia, NM 88210  
Phone: (505) 748-1283 Fax: (505) 748-9720  
Division III  
1000 Rio Grande Road, Aztec, NM 87410  
Phone: (505) 334-6178 Fax: (505) 334-6170  
Division IV  
1220 S. St. Francis Dr., Santa Fe, NM 87505  
Phone: (505) 476-3460 Fax: (505) 476-3462

State of New Mexico  
Energy, Minerals & Natural Resources Department  
OIL CONSERVATION DIVISION  
1220 South St. Francis Dr.  
Santa Fe, NM 87505

NM OIL CONSERVATION  
ARTESIA DISTRICT Form C-102  
Revised August 1, 2011  
SEP 06 2011 one copy to appropriate District Office  
**RECEIVED**  
☐ AMENDED REPORT

WELL LOCATION AND ACREAGE DEDICATION PLAT

API Number <b>30-015-45233</b>	Pool Code <b>98220</b>	Pool Name <b>Purple Sage Wolfcamp</b>
Property Code <b>322245</b>	Property Name <b>PLATINUM MDP1 "34-3" FEDERAL COM</b>	Well Number <b>176H</b>
OGRID No. <b>16696</b>	Operator Name <b>OXY USA INC.</b>	Elevation <b>3442.8'</b>

Surface Location

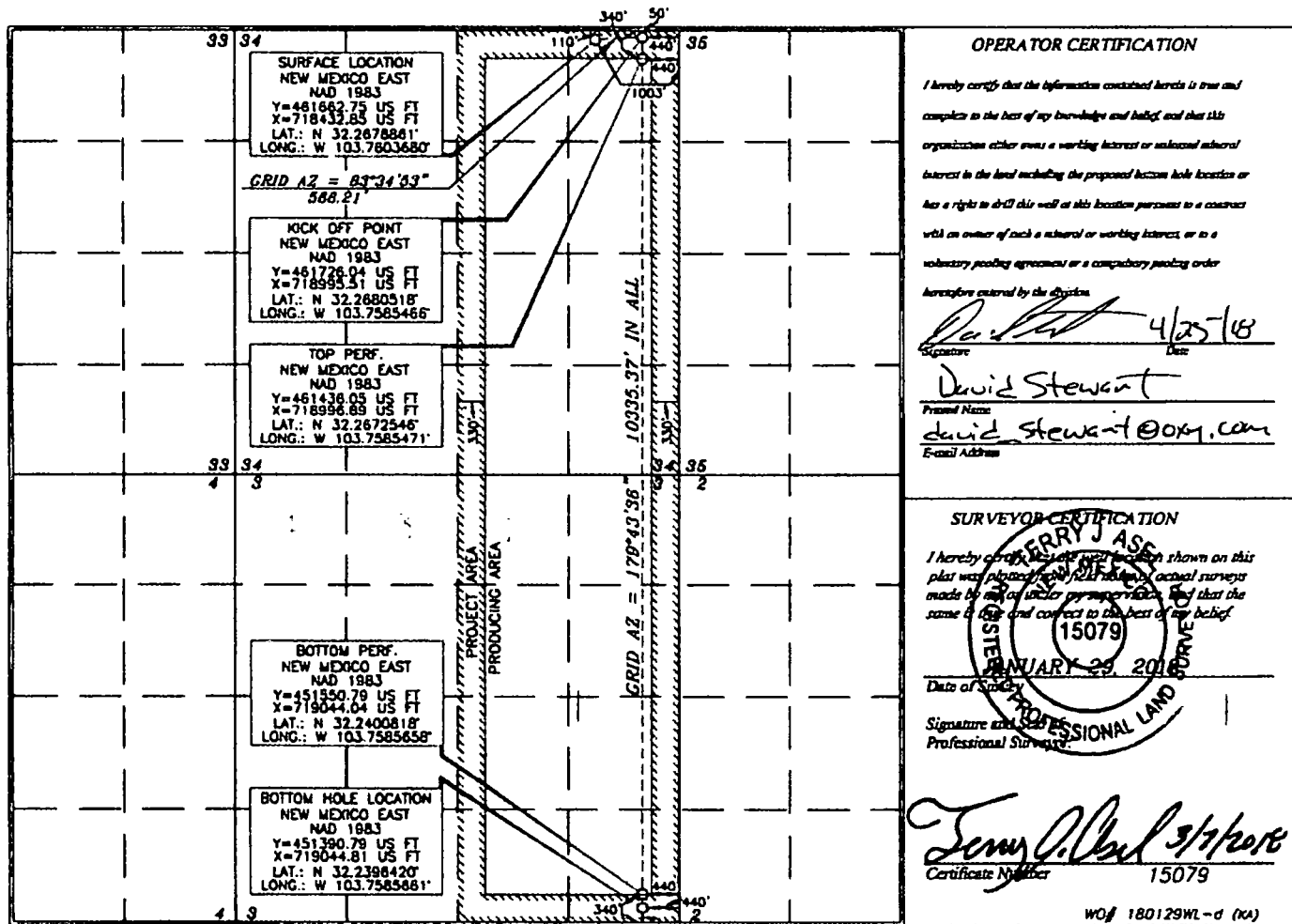
UL or lot no.	Section	Township	Range	Lot Idn	Feet from the	North/South line	Feet from the	East/West line	County
A	34	23 SOUTH	31 EAST, N.M.P.M.		110'	NORTH	1003'	EAST	EDDY

Bottom Hole Location If Different From Surface

UL or lot no.	Section	Township	Range	Lot Idn	Feet from the	North/South line	Feet from the	East/West line	County
P	3	24 SOUTH	31 EAST, N.M.P.M.		180'	SOUTH	440'	EAST	EDDY

Dedicated Acres <b>640/110.14</b>	Appt or Infill	Consolidation Code	Order No.
--------------------------------------	----------------	--------------------	-----------

No allowable will be assigned to this completion until all interests have been consolidated or a non-standard unit has been approved by the division.

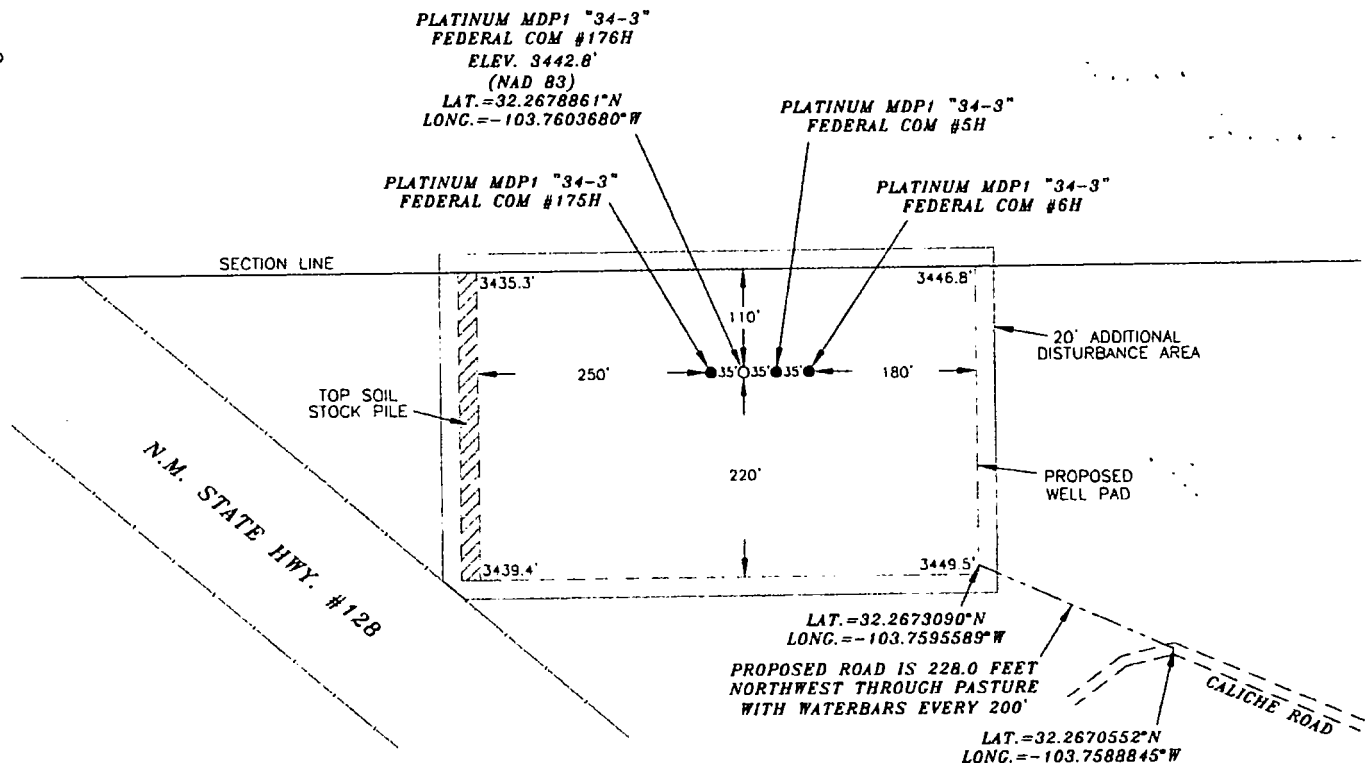


RUP 9-10-18

# OXY USA INC.

## PLATINUM MDP1 "34-3" FEDERAL COM #176H SITE PLAN

### FAA PERMIT: NO



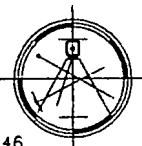
### SURVEYORS CERTIFICATE

I, TERRY J. ASEL, NEW MEXICO PROFESSIONAL SURVEYOR NO. 15079, DO HEREBY CERTIFY THAT I CONDUCTED AND AM RESPONSIBLE FOR THIS SURVEY, THAT THIS SURVEY IS TRUE AND CORRECT TO THE BEST OF MY KNOWLEDGE AND BELIEF, AND MEETS THE "MINIMUM STANDARDS FOR SURVEYING IN NEW MEXICO" AS ADOPTED BY THE NEW MEXICO STATE BOARD OF REGISTRATION FOR PROFESSIONAL ENGINEERS AND SURVEYORS.

*Terry J. Asel* 3/7/2016  
Terry J. Asel N.M. R.P.L.S. No. 15079

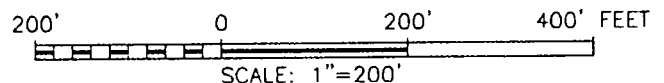
Asel Surveying

P.O. BOX 393 - 310 W. TAYLOR  
HOBBS, NEW MEXICO - 575-393-9146



### LEGEND

- DENOTES PROPOSED WELL PAD
- DENOTES PROPOSED ROAD
- ███ DENOTES STOCK PILE AREA



## OXY USA INC.

PLATINUM MDP1 "34-3" FEDERAL COM #176H  
LOCATED AT 110' FNL & 1003' FEL IN SECTION  
34, TOWNSHIP 23 SOUTH, RANGE 31 EAST,  
N.M.P.M., EDDY COUNTY, NEW MEXICO

Survey Date: 01/29/18	Sheet 1 of 1 Sheets
W.O. Number: 180129WL-d	Drawn By: KA Rev:
Date: 02/19/18	180129WL-d Scale: 1"=200'