

SEP 20 2018

**RECEIVED**

☐ **AMENDED REPORT**

# WELL LOCATION AND ACREAGE DEDICATION PLAT

<sup>1</sup> API Number 30-015- <i>43262</i>	<sup>2</sup> Pool Code 98220	<sup>3</sup> Pool Name Purple Sage; WOLFCAMP
<sup>4</sup> Property Code <i>322450</i>	<sup>5</sup> Property Name CYPRESS 34 23S29E3434	<sup>6</sup> Well Number #236H
<sup>7</sup> OGRID No. 372043	<sup>8</sup> Operator Name TAP ROCK OPERATING, LLC.	<sup>9</sup> Elevation 3093'

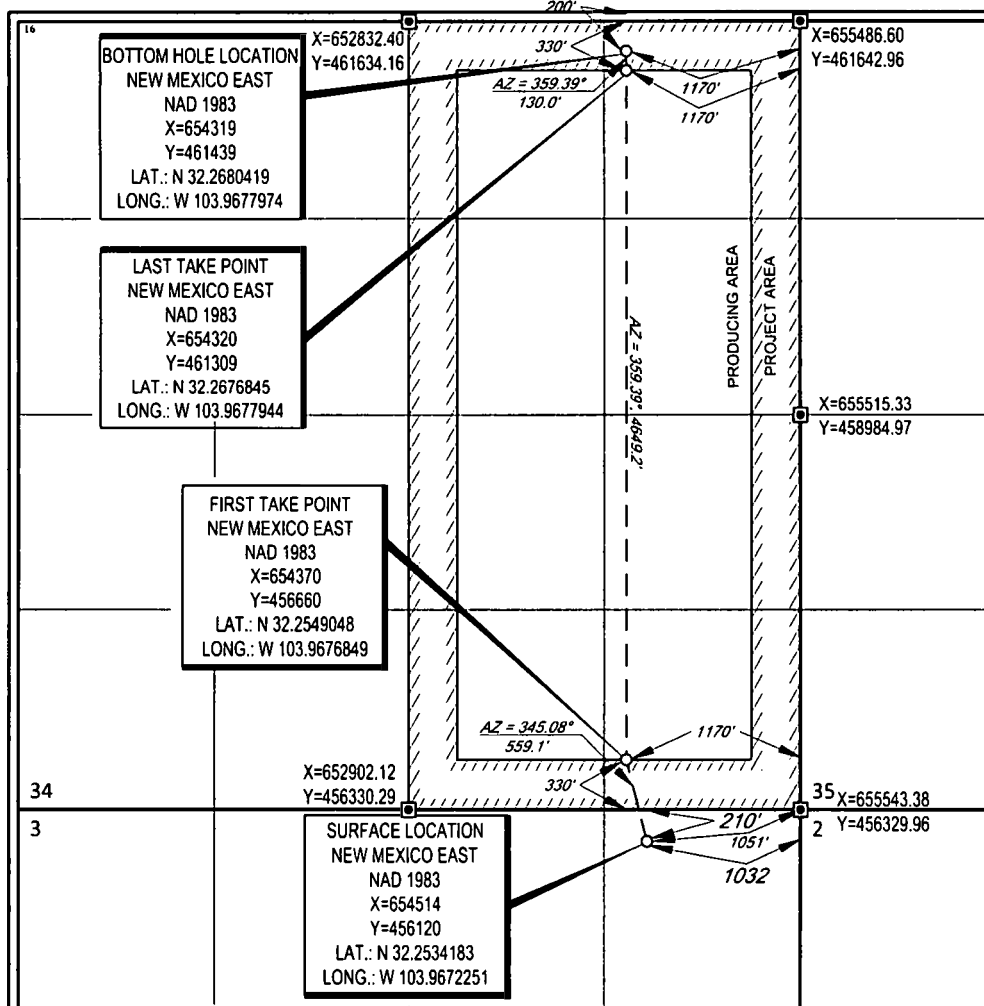
### <sup>10</sup>Surface Location

UL or lot no.	Section	Township	Range	Lot Idn	Feet from the	North/South line	Feet from the	East/West line	County
A	3	24-S	29-E	1 -	210'	NORTH	1032'	EAST	EDDY

UL or lot no.	Section	Township	Range	Lot Idn	Feet from the	North/South line	Feet from the	East/West line	County
A	34	23-S	29-E	-	200'	NORTH	1170'	EAST	EDDY

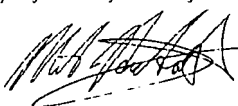
<sup>12</sup> Dedicated Acres <b>320</b>	<sup>13</sup> Joint or Infill	<sup>14</sup> Consolidation Code	<sup>15</sup> Order No.
---	-------------------------------	----------------------------------	-------------------------

No allowable will be assigned to this completion until all interests have been consolidated or a non-standard unit has been approved by the division.



# 17 OPERATOR CERTIFICATION

I hereby certify that the information contained herein is true and complete to the best of my knowledge and belief, and that this organization either owns a working interest or undleased mineral interest in the land including the proposed bottom hole location or has a right to drill this well at this location pursuant to a contract with an owner of such a mineral or working interest, or to a voluntary pooling agreement or a compulsory pooling order heretofore entered by the division.



5-31-18

Signature

Date

Mike Deutsch

Printed Name

mike@permitswest.com

E-mail Address

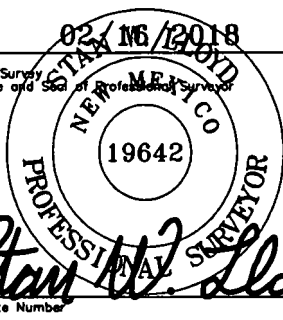
# 18 SURVEYOR CERTIFICATION


I hereby certify that the well location shown on this plat was plotted from field notes of actual surveys made by me or under my supervision, and that the same is true to the best of my belief.

02/16/2018

Date of Survey

Signature and Seal of Professional Surveyor

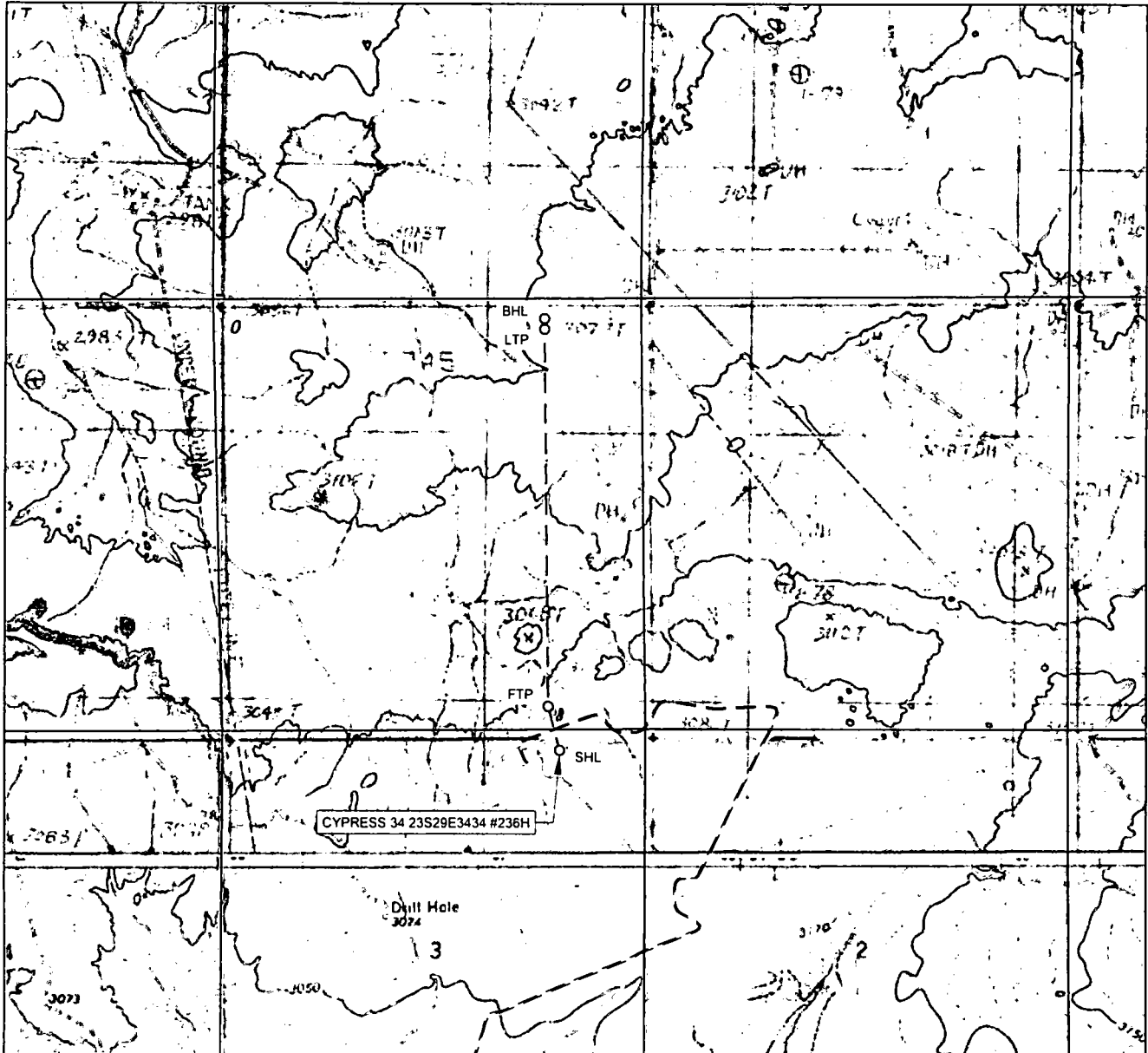




Certificate Number

RWP 9-21-78

# LOCATION & ELEVATION VERIFICATION MAP



LEASE NAME & WELL NO.: CYPRESS 34 23S29E3434 #236H

SECTION 3 TWP 24-S RGE 29-E SURVEY N.M.P.M.  
 COUNTY EDDY STATE NM ELEVATION 3093'  
 DESCRIPTION 210' FNL & 1032' FEL

LATITUDE N 32.2534183 LONGITUDE W 103.9672251



SCALE: 1" = 2000'  
 0' 1000' 2000'



**TOPOGRAPHIC**  
 LOYALTY INNOVATION LEGACY

THIS EASEMENT/SERVITUDE LOCATION SHOWN HEREON HAS BEEN SURVEYED ON THE GROUND UNDER MY SUPERVISION AND PREPARED ACCORDING TO THE EVIDENCE FOUND AT THE TIME OF SURVEY, AND DATA PROVIDED BY TAP ROCK OPERATING, LLC. THIS CERTIFICATION IS MADE AND LIMITED TO THOSE PERSONS OR ENTITIES SHOWN ON THE FACE OF THIS PLAT AND IS NON-TRANSFERABLE. THIS SURVEY IS CERTIFIED FOR THIS TRANSACTION ONLY.

ALL BEARINGS, DISTANCES, AND COORDINATE VALUES CONTAINED HEREON ARE GRID BASED UPON THE NEW MEXICO COORDINATE SYSTEM OF 1983, EAST ZONE, U.S. SURVEY FEET.

WWW.TOPOGRAPHIC.COM