

District I
1625 N. French Dr., Hobbs, NM 88240
Phone: (575) 393-6161 Fax: (575) 393-0720
District II
811 S. First St., Artesia, NM 88210
Phone: (575) 748-1283 Fax: (575) 748-9720
District III
1000 Rio Brazos Road, Aztec, NM 87410
Phone: (505) 334-6178 Fax: (505) 334-6170
District IV
1220 S. St. Francis Dr., Santa Fe, NM 87505
Phone: (505) 476-3460 Fax: (505) 476-3462

State of New Mexico **NM OIL CONSERVATION**
Energy, Minerals & Natural Resources Department
ARTESIA DISTRICT
OIL CONSERVATION DIVISION
1220 South St. Francis Dr. OCT 02 2018
Santa Fe, NM 87505

Form C-102
Revised August 1, 2011
Submit one copy to appropriate
District Office

RECEIVED

☐ AMENDED REPORT

WELL LOCATION AND ACREAGE DEDICATION PLAT

¹ API Number 30-015-45305		² Pool Code 98220	³ Pool Name PURPLE SAGE WOLFCAMP GAS
⁴ Property Code 322504	⁵ Property Name RIVERBOAT 12/1 WOPA FEDERAL COM		⁶ Well Number 1H
⁷ GRID NO. 14744	⁸ Operator Name MEWBOURNE OIL COMPANY		⁹ Elevation 3237'

¹⁰ Surface Location

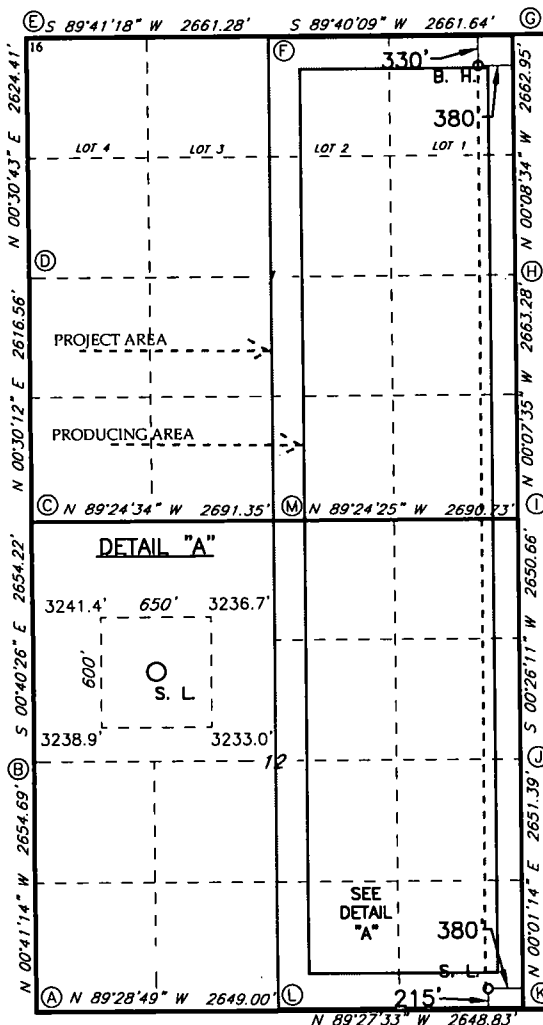
UL or lot no.	Section	Township	Range	Lot Idn	Feet from the	North/South line	Feet From the	East/West line	County
P	12	24S	26E		215	SOUTH	380	EAST	EDDY

¹¹ Bottom Hole Location If Different From Surface

UL or lot no.	Section	Township	Range	Lot Idn	Feet from the	North/South line	Feet from the	East/West line	County
1	1	24S	26E		330	NORTH	380	EAST	EDDY

¹² Dedicated Acres 640	¹³ Joint or Infill 640.12	¹⁴ Consolidation Code	¹⁵ Order No.
---	--	----------------------------------	-------------------------

No allowable will be assigned to this completion until all interest have been consolidated or a non-standard unit has been approved by the division.



GEODETIC DATA
NAD 83 GRID - NM EAST
SURFACE LOCATION
N: 445633.5 - E: 570444.7
LAT: 32.2250878° N
LONG: 104.2392050° W
BOTTOM HOLE
N: 455708.5 - E: 570454.0
LAT: 32.2527828° N
LONG: 104.2391462° W

CORNER DATA
NAD 83 GRID - NM EAST

A: FOUND BRASS CAP "1968"
N: 445464.0 - E: 565528.1
B: FOUND BRASS CAP "1968"
N: 448117.8 - E: 565496.3
C: FOUND BRASS CAP "1968"
N: 450771.2 - E: 565465.1
D: FOUND BRASS CAP "1968"
N: 453387.1 - E: 565488.1
E: FOUND BRASS CAP "1968"
N: 456010.7 - E: 565511.5
F: FOUND BRASS CAP "1968"
N: 456025.2 - E: 568172.1
G: FOUND BRASS CAP "1968"
N: 456040.6 - E: 570833.1
H: FOUND BRASS CAP "1968"
N: 453378.3 - E: 570839.7
I: FOUND BRASS CAP "1968"
N: 450715.6 - E: 570845.6
J: FOUND BRASS CAP "1968"
N: 448065.7 - E: 570825.4
K: FOUND BRASS CAP "1968"
N: 445414.9 - E: 570824.5
L: FOUND BRASS CAP "1968"
N: 445439.9 - E: 568176.4
M: FOUND BRASS CAP "1968"
N: 450743.5 - E: 568155.7

17 OPERATOR CERTIFICATION

I hereby certify that the information contained herein is true and complete to the best of my knowledge and belief, and that this organization either owns a working interest or unleased mineral interest in the land including the proposed bottom hole location or has a right to drill this well at this location pursuant to a contract with an owner of such a mineral or working interest, or to a voluntary pooling agreement or a compulsory pooling order heretofore entered by the division.

Signature *Bradley Bishop* Date **11-1-17**

Printed Name **BRADLEY BISHOP**

BBISHOP@MEWBOURNE.COM

E-mail Address

18 SURVEYOR CERTIFICATION

I hereby certify that the well location shown on this plat was plotted from field notes of actual surveys made by me or under my supervision, and that the same is true and correct to the best of my belief.

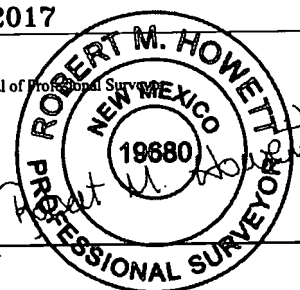
4-18-2017

Date of Survey

Signature and Seal of Professional Surveyor

19680

Certificate Number



Job No.: LS1704187

RWP 10-2-18