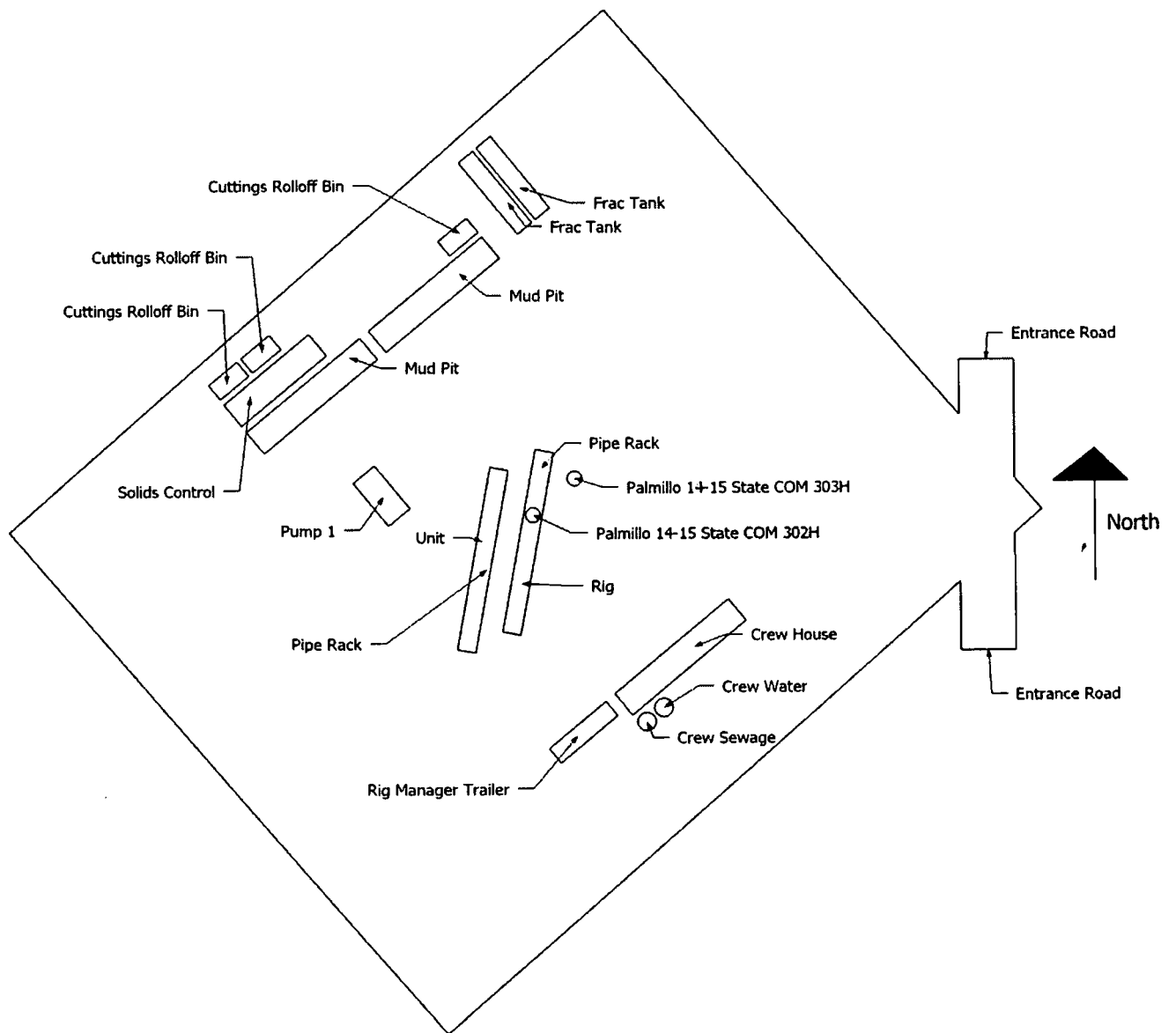


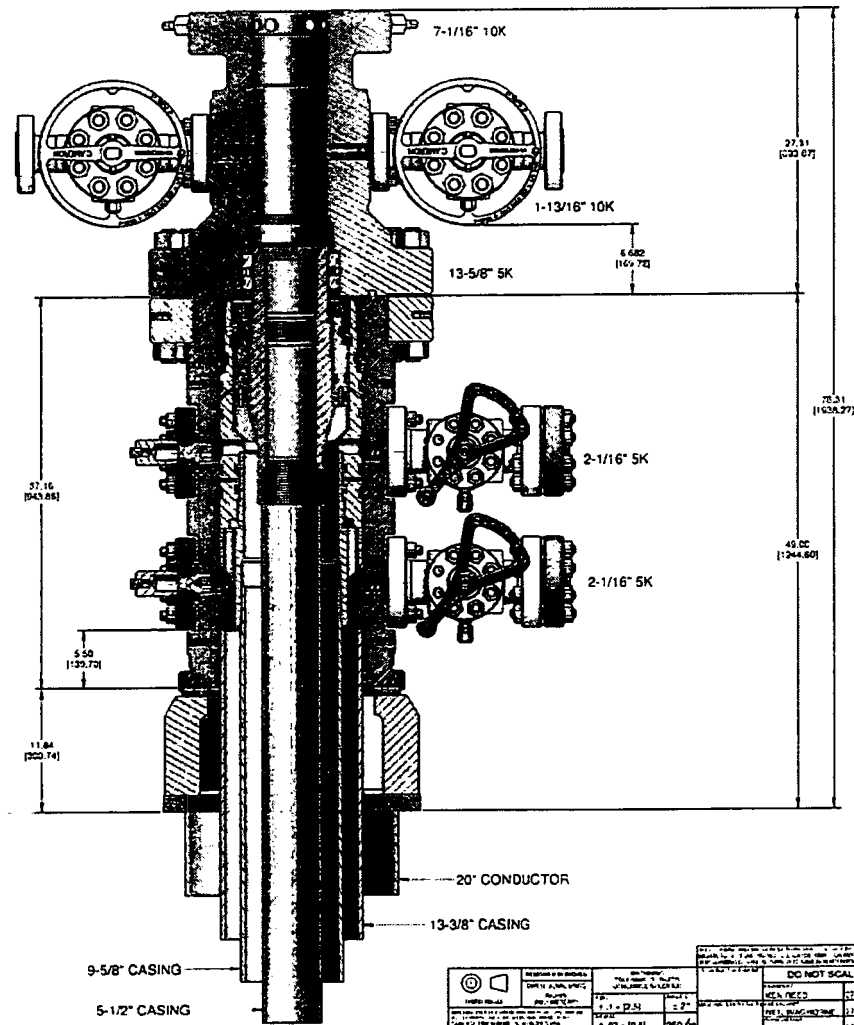
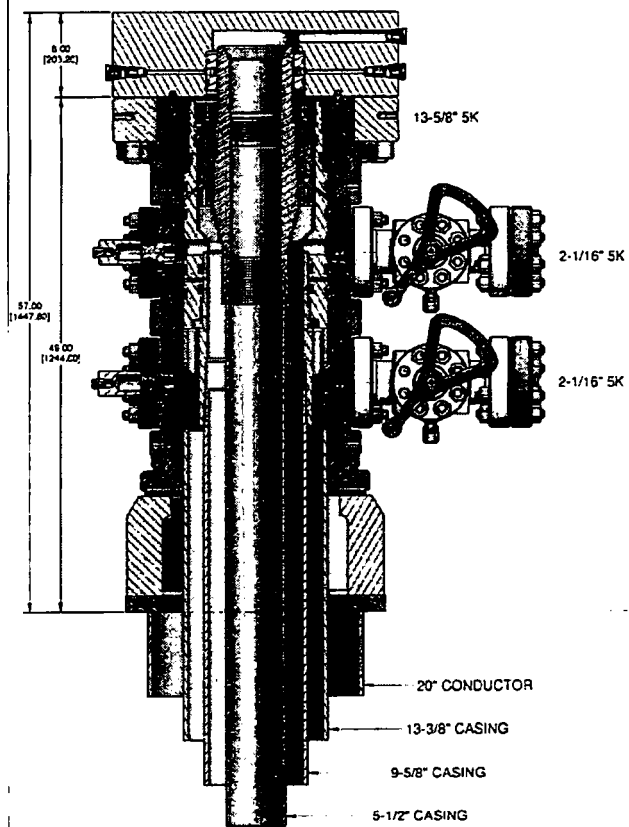
Palmillo 14-15 State Com 302H

30.015.45341

Apache Corp respectfully requests approval for the following changes and additions to the drilling plan:

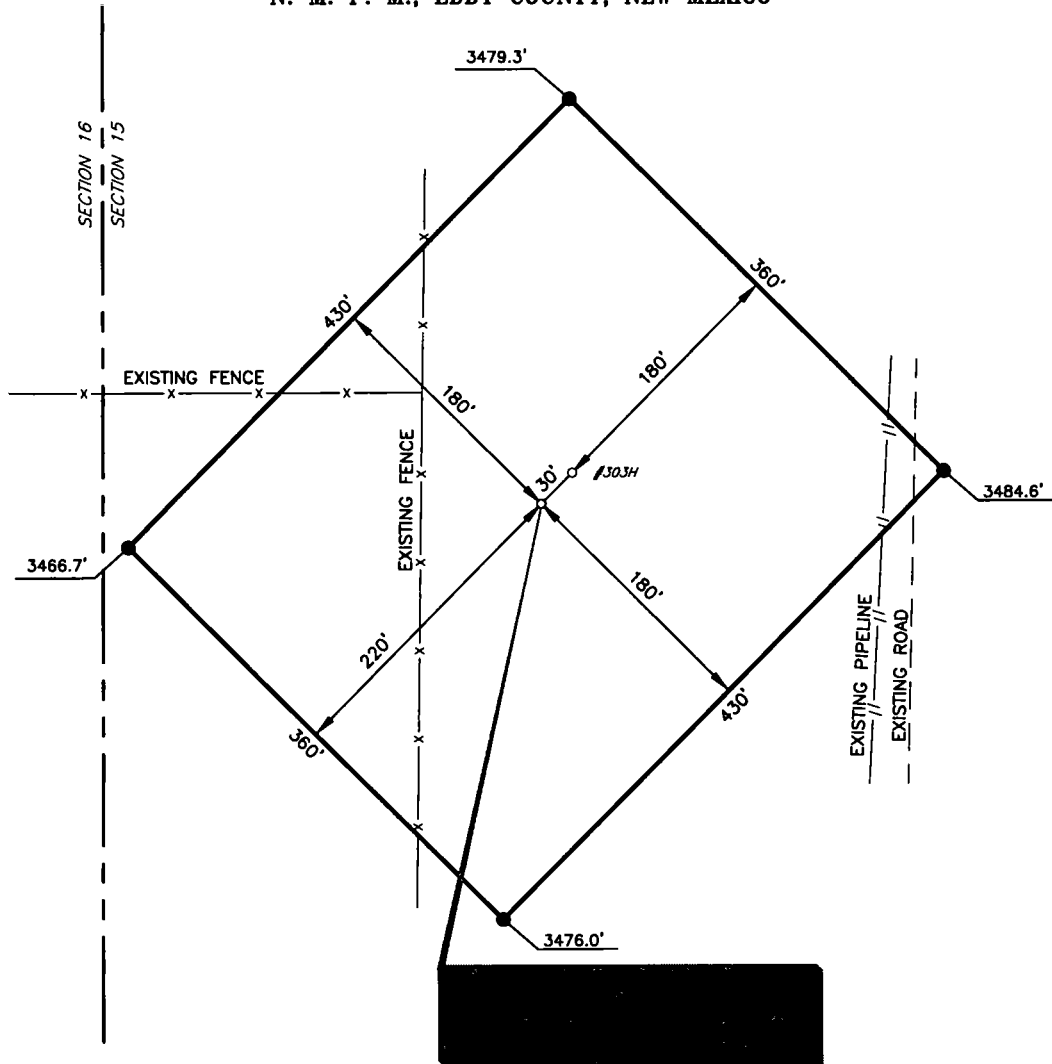
1. Utilize a spudder rig to pre-set surface casing.
2. Description of Operations
 1. Spudder rig will move in their rig to drill the surface hole section and pre-set surface casing on the Palmillo 14-15 State COM 302H.
 - a. After drilling the surface hole section, the rig will run casing and cement following all of the applicable rules and regulations (19.15.16 NMAC Drilling and Production).
 - b. Rig will utilize fresh water based mud to drill 17-1/2" surface hole to TD. Solids control will be handled entirely on a closed loop basis.
 2. The wellhead (page 3) will be installed and tested once the 13-3/8" surface casing is cut off and the WOC time has been reached.
 3. A blind flange with the same pressure rating as the wellhead will be installed to seal the wellbore. Pressure will be monitored with a pressure gauge installed on the wellhead.
 - a. A means for intervention will be maintained while the drilling rig is not over the well.
 4. Spudder rig operations is expected to take 1-2 days on a single well pad.
 5. The NMOCD will be contacted and notified 24 hours prior to commencing spudder rig operations.
 6. Drilling operations will be performed with the drilling rig. At that time an approved BOP stack will be nipped up and tested on the wellhead before drilling operations commences on each well.
 - a. The NMOCD will be contacted / notified 24 hours before the drilling rig moves back on to the pad with the pre-set surface casing.
 7. Apache Corp will have supervision over the rig to ensure compliance with all NMOCD regulations and to oversee operations.
 8. Once the rig is removed, Apache Corp will secure the wellhead area by placing a guard rail around the cellar area.





DO NOT SCALE		CAMERON		SURFACED	
ITEM	QTY	DESCRIPTION	UNIT	QTY	DESCRIPTION
1	1	13-5/8" CK BOP-CSE M/J T-ODM	1	1	13-5/8" CK BOP-CSE M/J T-ODM
2	1	2-1/16" 5K	1	1	2-1/16" 5K
3	1	2-1/16" 5K	1	1	2-1/16" 5K
4	1	2-1/16" 5K	1	1	2-1/16" 5K
5	1	2-1/16" 5K	1	1	2-1/16" 5K
6	1	2-1/16" 5K	1	1	2-1/16" 5K
7	1	2-1/16" 5K	1	1	2-1/16" 5K
8	1	2-1/16" 5K	1	1	2-1/16" 5K
9	1	2-1/16" 5K	1	1	2-1/16" 5K
10	1	2-1/16" 5K	1	1	2-1/16" 5K
11	1	2-1/16" 5K	1	1	2-1/16" 5K
12	1	2-1/16" 5K	1	1	2-1/16" 5K
13	1	2-1/16" 5K	1	1	2-1/16" 5K
14	1	2-1/16" 5K	1	1	2-1/16" 5K
15	1	2-1/16" 5K	1	1	2-1/16" 5K
16	1	2-1/16" 5K	1	1	2-1/16" 5K
17	1	2-1/16" 5K	1	1	2-1/16" 5K
18	1	2-1/16" 5K	1	1	2-1/16" 5K
19	1	2-1/16" 5K	1	1	2-1/16" 5K
20	1	2-1/16" 5K	1	1	2-1/16" 5K
21	1	2-1/16" 5K	1	1	2-1/16" 5K
22	1	2-1/16" 5K	1	1	2-1/16" 5K
23	1	2-1/16" 5K	1	1	2-1/16" 5K
24	1	2-1/16" 5K	1	1	2-1/16" 5K
25	1	2-1/16" 5K	1	1	2-1/16" 5K
26	1	2-1/16" 5K	1	1	2-1/16" 5K
27	1	2-1/16" 5K	1	1	2-1/16" 5K
28	1	2-1/16" 5K	1	1	2-1/16" 5K
29	1	2-1/16" 5K	1	1	2-1/16" 5K
30	1	2-1/16" 5K	1	1	2-1/16" 5K
31	1	2-1/16" 5K	1	1	2-1/16" 5K
32	1	2-1/16" 5K	1	1	2-1/16" 5K
33	1	2-1/16" 5K	1	1	2-1/16" 5K
34	1	2-1/16" 5K	1	1	2-1/16" 5K
35	1	2-1/16" 5K	1	1	2-1/16" 5K
36	1	2-1/16" 5K	1	1	2-1/16" 5K
37	1	2-1/16" 5K	1	1	2-1/16" 5K
38	1	2-1/16" 5K	1	1	2-1/16" 5K
39	1	2-1/16" 5K	1	1	2-1/16" 5K
40	1	2-1/16" 5K	1	1	2-1/16" 5K
41	1	2-1/16" 5K	1	1	2-1/16" 5K
42	1	2-1/16" 5K	1	1	2-1/16" 5K
43	1	2-1/16" 5K	1	1	2-1/16" 5K
44	1	2-1/16" 5K	1	1	2-1/16" 5K
45	1	2-1/16" 5K	1	1	2-1/16" 5K
46	1	2-1/16" 5K	1	1	2-1/16" 5K
47	1	2-1/16" 5K	1	1	2-1/16" 5K
48	1	2-1/16" 5K	1	1	2-1/16" 5K
49	1	2-1/16" 5K	1	1	2-1/16" 5K
50	1	2-1/16" 5K	1	1	2-1/16" 5K
51	1	2-1/16" 5K	1	1	2-1/16" 5K
52	1	2-1/16" 5K	1	1	2-1/16" 5K
53	1	2-1/16" 5K	1	1	2-1/16" 5K
54	1	2-1/16" 5K	1	1	2-1/16" 5K
55	1	2-1/16" 5K	1	1	2-1/16" 5K
56	1	2-1/16" 5K	1	1	2-1/16" 5K
57	1	2-1/16" 5K	1	1	2-1/16" 5K
58	1	2-1/16" 5K	1	1	2-1/16" 5K
59	1	2-1/16" 5K	1	1	2-1/16" 5K
60	1	2-1/16" 5K	1	1	2-1/16" 5K
61	1	2-1/16" 5K	1	1	2-1/16" 5K
62	1	2-1/16" 5K	1	1	2-1/16" 5K
63	1	2-1/16" 5K	1	1	2-1/16" 5K
64	1	2-1/16" 5K	1	1	2-1/16" 5K
65	1	2-1/16" 5K	1	1	2-1/16" 5K
66	1	2-1/16" 5K	1	1	2-1/16" 5K
67	1	2-1/16" 5K	1	1	2-1/16" 5K
68	1	2-1/16" 5K	1	1	2-1/16" 5K
69	1	2-1/16" 5K	1	1	2-1/16" 5K
70	1	2-1/16" 5K	1	1	2-1/16" 5K
71	1	2-1/16" 5K	1	1	2-1/16" 5K
72	1	2-1/16" 5K	1	1	2-1/16" 5K
73	1	2-1/16" 5K	1	1	2-1/16" 5K
74	1	2-1/16" 5K	1	1	2-1/16" 5K
75	1	2-1/16" 5K	1	1	2-1/16" 5K
76	1	2-1/16" 5K	1	1	2-1/16" 5K
77	1	2-1/16" 5K	1	1	2-1/16" 5K
78	1	2-1/16" 5K	1	1	2-1/16" 5K
79	1	2-1/16" 5K	1	1	2-1/16" 5K
80	1	2-1/16" 5K	1	1	2-1/16" 5K
81	1	2-1/16" 5K	1	1	2-1/16" 5K
82	1	2-1/16" 5K	1	1	2-1/16" 5K
83	1	2-1/16" 5K	1	1	2-1/16" 5K
84	1	2-1/16" 5K	1	1	2-1/16" 5K
85	1	2-1/16" 5K	1	1	2-1/16" 5K
86	1	2-1/16" 5K	1	1	2-1/16" 5K
87	1	2-1/16" 5K	1	1	2-1/16" 5K
88	1	2-1/16" 5K	1	1	2-1/16" 5K
89	1	2-1/16" 5K	1	1	2-1/16" 5K
90	1	2-1/16" 5K	1	1	2-1/16" 5K
91	1	2-1/16" 5K	1	1	2-1/16" 5K
92	1	2-1/16" 5K	1	1	2-1/16" 5K
93	1	2-1/16" 5K	1	1	2-1/16" 5K
94	1	2-1/16" 5K	1	1	2-1/16" 5K
95	1	2-1/16" 5K	1	1	2-1/16" 5K
96	1	2-1/16" 5K	1	1	2-1/16" 5K
97	1	2-1/16" 5K	1	1	2-1/16" 5K
98	1	2-1/16" 5K	1	1	2-1/16" 5K
99	1	2-1/16" 5K	1	1	2-1/16" 5K
100	1	2-1/16" 5K	1	1	2-1/16" 5K

APACHE CORPORATION
PALMILLO 14-15 STATE COM #302H
(1775' FSL & 300' FWL)
SECTION 15, T19S, R28E
N. M. P. M., EDDY COUNTY, NEW MEXICO



DIRECTIONS TO LOCATION

From the intersection of Buckskin Rd. (CR-242) and Millman Rd. (CR-246);
 Go Northwest on Millman Rd. approx. 0.1 miles; Continue onto Hillbilly Rd approx. 1.0 mile;
 Continue onto Millman Rd. approx. 1.7 miles;
 Go right at the 1st cross street to stay on Millman Rd. approx. 0.5 miles;
 Turn left onto lease Rd. approx. 0.5 miles and onto proposed Rd. to the South Pad.

THIS IS NOT A BOUNDARY SURVEY, APPARENT PROPERTY CORNERS AND
 PROPERTY LINES ARE SHOWN FOR INFORMATION ONLY, BOUNDARY DATA IS
 SHOWN FROM A PREVIOUS SURVEY REFERENCED HEREON.

I, Jeffrey L. Fansler, a N. M. Professional Surveyor, hereby certify
 that I prepared this plat from an actual survey made on the
 ground under my direct supervision, said survey and plat meet
 the Min. Stds. for Land Surveying in the State of N. M. and are
 true and correct to the best of my knowledge and belief.

Jeffrey L. Fansler
 Jeffrey L. Fansler NM PS 10034



SCALE: 1" = 100'
 0 50' 100'
 BEARINGS ARE GRID NAD 83
 NM EAST
 DISTANCES ARE HORIZ. GROUND.

Copyright 2017 - All Rights Reserved

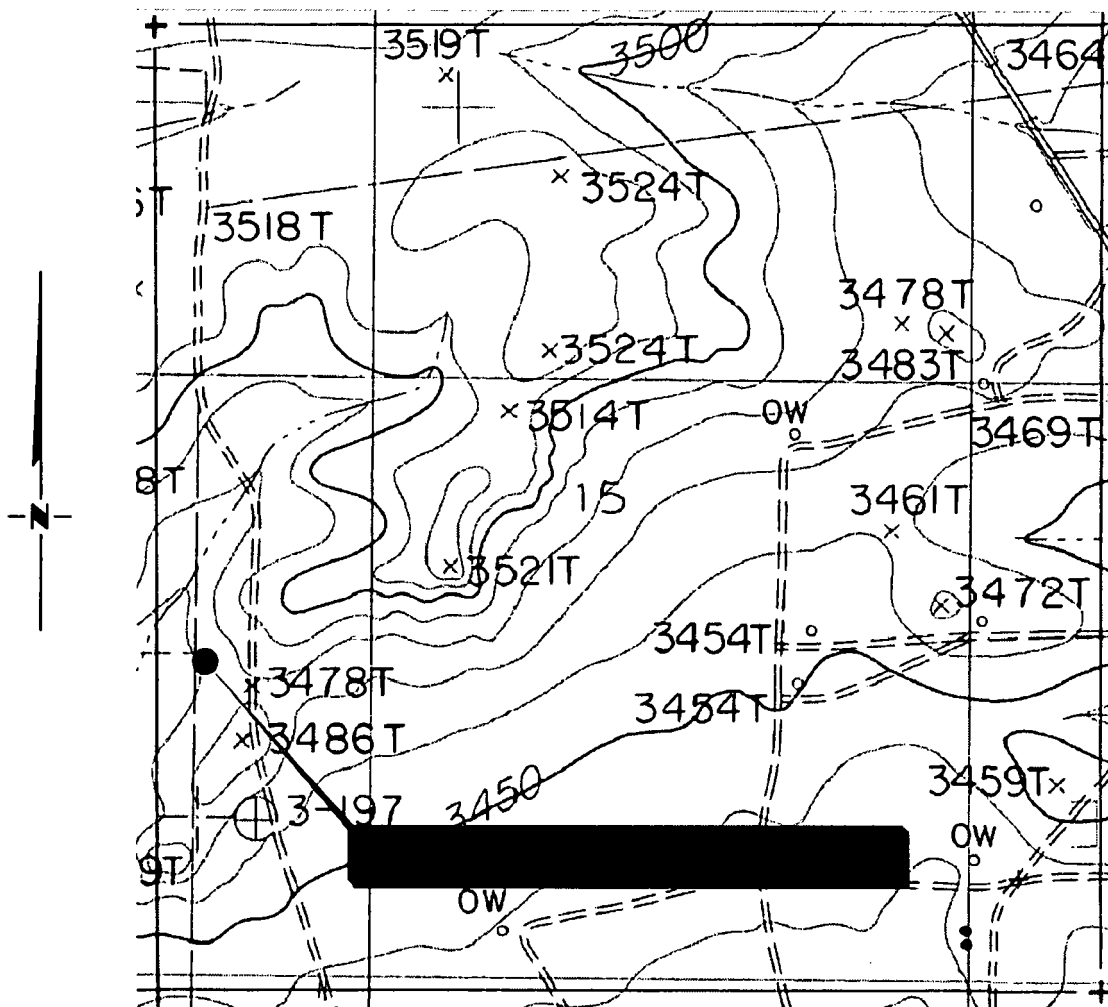
NO.	REVISION	DATE
JOB NO.:	LS18091069	
DWG. NO.:	18091069PAD	

RRC

302 701 S. CECIL ST., HOBBS, NM 88240 (575) 964-8200

SCALE: 1" = 100'
DATE: 09-13-2018
SURVEYED BY: AB/RU
DRAWN BY: JBT
APPROVED BY: JLF
SHEET: 1 OF 1

LOCATION VERIFICATION MAP



**SECTION 15, TWP. 19 SOUTH, RGE. 28 EAST,
N. M. P. M., EDDY COUNTY, NEW MEXICO**

OPERATOR: Apache Corporation
LEASE: Palmillo 14-15 State Com
WELL NO.: 302H
ELEVATION: 3474'

LOCATION: 1775' FSL & 300' FWL
CONTOUR INTERVAL: 10'
USGS TOPO. SOURCE MAP:
Illinois Camp, NM (P. E. 1985)

Copyright 2017 - All Rights Reserved

NO.	REVISION	DATE
JOB NO.: LS18091069		
DWG. NO.:18091069LVM		

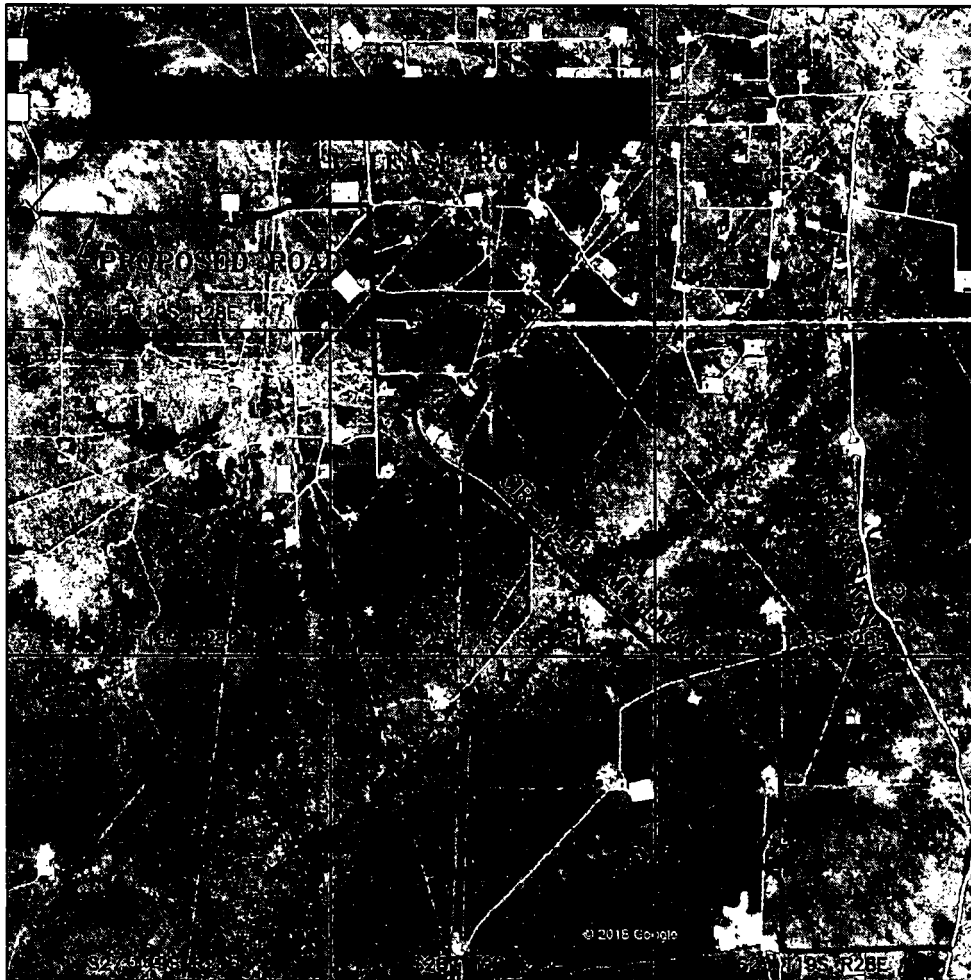
RRC

302 701 S. CECIL ST., HOBBS, NM 88240 (575) 964-8200

SCALE: 1" = 1000'
DATE: 09-13-2018
SURVEYED BY: AB/RU
DRAWN BY: CAR
APPROVED BY: JLF
SHEET: 1 OF 1

VICINITY MAP

NOT TO SCALE



*SECTION 15, TWP. 19 SOUTH, RGE. 28 EAST,
N. M. P. M., EDDY COUNTY, NEW MEXICO*

OPERATOR: Apache Corporation
LEASE: Palmillo 14-15 State Com
WELL NO.: 302H

LOCATION: 1775' FSL & 300' FWL
ELEVATION: 3474'

Copyright 2017 - All Rights Reserved

NO.	REVISION	DATE
JOB NO.: LS18091069		
DWG. NO.: 18091069VM		

RRC



302 701 S. CECIL ST., HOBBS, NM 88240 (575) 964-8200

SCALE: N / A
DATE: 09-13-2018
SURVEYED BY: AB/RU
DRAWN BY: CAR
APPROVED BY: JLF
SHEET: 1 OF 1