

**District I**  
1625 N. French Dr., Hobbs, NM 88240  
Phone: (575) 393-6161 Fax: (575) 393-0720

**District II**  
811 S. First St., Artesia, NM 88210  
Phone: (575) 748-1283 Fax: (575) 748-9720

**District III**  
1000 Rio Brazos Road, Aztec, NM 87410  
Phone: (505) 334-6178 Fax: (505) 334-6170

**District IV**  
1220 S. St. Francis Dr., Santa Fe, NM 87505  
Phone: (505) 476-3460 Fax: (505) 476-3462

**State of New Mexico**  
**Energy Minerals and Natural Resources**

Form C-101  
Revised July 18, 2013

**Oil Conservation Division**

**1220 South St. Francis Dr. OCT 15 2018**

**Santa Fe, NM 87505**

**DISTRICT II-ARTESIA O.C.D.**

**AMENDED REPORT**

**APPLICATION FOR PERMIT TO DRILL, RE-ENTER, DEEPEN, PLUGBACK, OR ADD A ZONE**

|  |   |   |
|--|---|---|
| <sup>1</sup> Operator Name and Address<br>Judah Oil, LLC<br>P. O. Box 568<br>Artesia, NM 88211 |   | <sup>2</sup> OGRID Number<br>245872     |
|  |   | <sup>3</sup> API Number<br>30-015-44818 |
| <sup>4</sup> Property Code<br>321022   | <sup>5</sup> Property Name<br>Mile Marker 3 State SWD | <sup>6</sup> Well No.<br>001            |

**7. Surface Location**

|               |                |                 |              |         |                  |                   |                   |                  |                |
|---------------|----------------|-----------------|--------------|---------|------------------|-------------------|-------------------|------------------|----------------|
| UL - Lot<br>C | Section\<br>10 | Township<br>26S | Range<br>28E | Lot Idn | Feet from<br>660 | N/S Line<br>North | Feet From<br>2310 | E/W Line<br>West | County<br>Eddy |
|---------------|----------------|-----------------|--------------|---------|------------------|-------------------|-------------------|------------------|----------------|

**8. Proposed Bottom Hole Location**

|               |               |                 |              |         |                  |                   |                   |                  |                |
|---------------|---------------|-----------------|--------------|---------|------------------|-------------------|-------------------|------------------|----------------|
| UL - Lot<br>C | Section<br>10 | Township<br>26S | Range<br>28E | Lot Idn | Feet from<br>660 | N/S Line<br>North | Feet From<br>2310 | E/W Line<br>West | County<br>Eddy |
|---------------|---------------|-----------------|--------------|---------|------------------|-------------------|-------------------|------------------|----------------|

**9. Pool Information**

|                                       |                    |
|---------------------------------------|--------------------|
| Pool Name<br>SWD; Devonian - Silurian | Pool Code<br>97869 |
|---------------------------------------|--------------------|

**Additional Well Information**

|                                |  |   |                                 |   |
|--------------------------------|--|---|---------------------------------|---|
| <sup>11</sup> Work Type<br>New | <sup>12</sup> Well Type<br>S           | <sup>13</sup> Cable/Rotary<br>R                 | <sup>14</sup> Lease Type<br>S   | <sup>15</sup> Ground Level Elevation<br>2993' |
| <sup>16</sup> Multiple<br>N    | <sup>17</sup> Proposed Depth<br>15400' | <sup>18</sup> Formation<br>Devonian-Silurian    | <sup>19</sup> Contractor<br>TBD | <sup>20</sup> Spud Date<br>TBD                |
| Depth to Ground water > 200'   |  | Distance from nearest fresh water well > 1 mile |                                 | Distance to nearest surface water 2.4 miles   |

☒ We will be using a closed-loop system in lieu of lined pits

**21. Proposed Casing and Cement Program**

| Type   | Hole Size | Casing Size | Casing Weight/ft | Setting Depth | Sacks of Cement | Estimated TOC |
|--------|-----------|-------------|------------------|---------------|-----------------|---------------|
| Surf   | 26"       | 20"         | 94               | 515           | 950             | Surface       |
| Interm | 17-1/2"   | 13-3/8"     | 61               | 2510          | 1800            | Surface       |
| Prod   | 12-1/4"   | 9-5/8"      | 43.5/47          | 9700          | 2062            | Surface       |
| Liner  | 8-1/2"    | 7-5/8"      | 39               | 9400-14540    | 625             | TOL-9400      |

**Casing/Cement Program: Additional Comments**

**Amended C-101 and C-102 per Administrative Order SWD-1756 approved 10/3/18**

**22. Proposed Blowout Prevention Program**

| Type              | Working Pressure | Test Pressure | Manufacturer   |
|-------------------|------------------|---------------|----------------|
| Double Ram/Hydril | 10,000/5000      | 10,000/5000   | NOV (National) |

<sup>23</sup> I hereby certify that the information given above is true and complete to the best of my knowledge and belief.

I further certify that I have complied with 19.15.14.9 (A) NMAC ☒ and/or 19.15.14.9 (B) NMAC ☒ if applicable.

Signature:

*DJ Holcomb*

Printed name: Danny J. Holcomb

Title: Agent Judah Oil, LLC

E-mail Address: danny@pwllc.net

Date: 10/5/2018

Phone: 806-471-5628

**OIL CONSERVATION DIVISION**

Approved By:

*Raymond H. Perkins*

Title:

*Geologist*

Approved Date: 10-22-18

Expiration Date: 10-22-20

Conditions of Approval Attached C-108

DISTRICT I  
1620 S. FRANCIS DR., EDWARDS, NM 88340  
Phone: (505) 833-4181 Fax: (505) 833-8789

DISTRICT II  
811 S. FIRST ST., ARTESIA, NM 88210  
Phone: (505) 748-1253 Fax: (505) 748-9723

DISTRICT III  
1000 ETO BLVD., ALBUQUERQUE, NM 87410  
Phone: (505) 234-8175 Fax: (505) 234-8170

DISTRICT IV  
1220 S. ST. FRANCIS DR., SANTA FE, NM 87505  
Phone: (505) 478-3460 Fax: (505) 478-3455

State of New Mexico  
Energy, Minerals & Natural Resources Department  
**OIL CONSERVATION DIVISION**  
1220 SOUTH ST. FRANCIS DR.  
Santa Fe, New Mexico 87505

RECEIVED

OCT 15 2018

Form C-102  
Revised August 1, 2011  
Submit one copy to appropriate  
District Office

DISTRICT II-ARTESIA O.C.D. ☒ AMENDED REPORT

**WELL LOCATION AND ACREAGE DEDICATION PLAT**

|                            |   |                                       |
|----------------------------|---|---------------------------------------|
| API Number<br>30-015-44818 | Pool Code<br>97869                              | Pool Name<br>SWD; Devonian - Silurian |
| Property Code<br>321022    | Property Name<br><b>MILE MARKER 5 STATE SWD</b> | Well Number<br>1                      |
| OCRD No.<br>245872         | Operator Name<br><b>JUDAH OIL, LLC</b>          | Elevation<br>2993.2'                  |

**Surface Location**

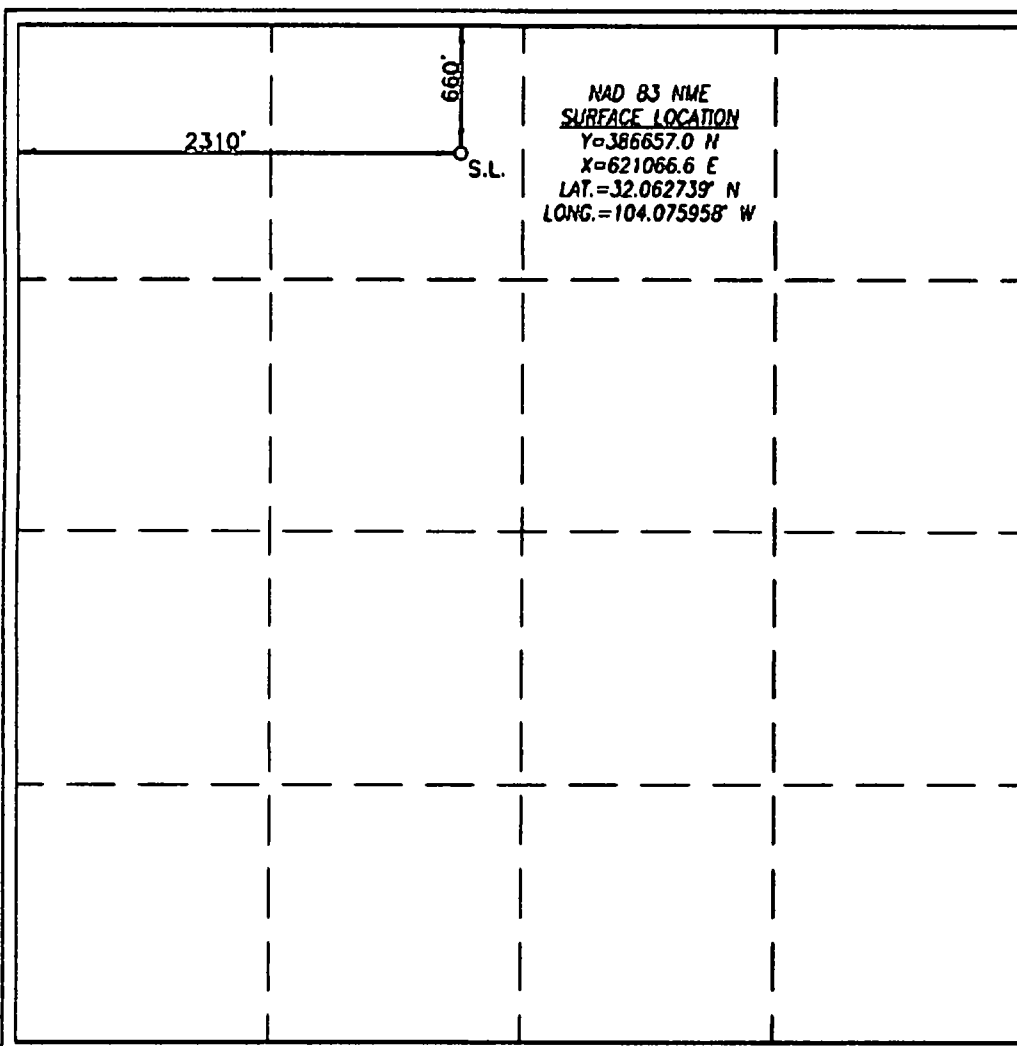
|                    |               |                  |               |         |                      |                           |                       |                        |                |
|--------------------|---------------|------------------|---------------|---------|----------------------|---------------------------|-----------------------|------------------------|----------------|
| UL or lot No.<br>C | Section<br>10 | Township<br>26-S | Range<br>28-E | Lot Idn | Feet from the<br>660 | North/South line<br>NORTH | Feet from the<br>2310 | East/West line<br>WEST | County<br>EDDY |
|--------------------|---------------|------------------|---------------|---------|----------------------|---------------------------|-----------------------|------------------------|----------------|

**Bottom Hole Location if Different From Surface**

|               |         |          |       |         |               |                  |               |                |        |
|---------------|---------|----------|-------|---------|---------------|------------------|---------------|----------------|--------|
| UL or lot No. | Section | Township | Range | Lot Idn | Feet from the | North/South line | Feet from the | East/West line | County |
|---------------|---------|----------|-------|---------|---------------|------------------|---------------|----------------|--------|

|                 |                 |                    |                              |
|-----------------|-----------------|--------------------|------------------------------|
| Dedicated Acres | Joint or Infill | Consolidation Code | Order No.<br><b>SWD-1756</b> |
|-----------------|-----------------|--------------------|------------------------------|

**NO ALLOWABLE WILL BE ASSIGNED TO THIS COMPLETION UNTIL ALL INTERESTS HAVE BEEN CONSOLIDATED  
OR A NON-STANDARD UNIT HAS BEEN APPROVED BY THE DIVISION**



**OPERATOR CERTIFICATION**

I hereby certify that the information herein is true and complete to the best of my knowledge and belief, and that this organization either owns a working interest or unless mineral interest in the land including the proposed bottom hole location or has a right to drill this well at this location pursuant to a contract with an owner of such mineral or working interest, or to a voluntary pooling agreement or a compulsory pooling order heretofore entered by the division.

*DJ Holcomb* 10/5/18  
Signature Date  
Danny J. Holcomb - Agent  
Printed Name  
danny@pwllc.net  
E-mail Address

**SURVEYOR CERTIFICATION**

I hereby certify that the well location shown on this plat was plotted from field notes of actual surveys made by me or under my supervision, and that the same is true and correct to the best of my belief.

MARCH 6, 2018

Date of Survey

Signature & Seal of Professional Surveyor

*Chad L. Harcrow*  
CHAD L. HARCROW  
NEW MEXICO  
17777  
LICENSED PROFESSIONAL SURVEYOR  
3/13/18  
Certificate No. CHAD HARCROW 17777  
W.O. #18-190 DRAWN BY: AM

# Judah Oil, LLC

Mile Marker 5 State #1 SWD

API #30-015-44818

UL-A, Sec 10, T-26-S, R-28-E

660' FNL, 2310' FWL

Eddy County New Mexico

Proposed Wellbore (New Drill)

RECEIVED

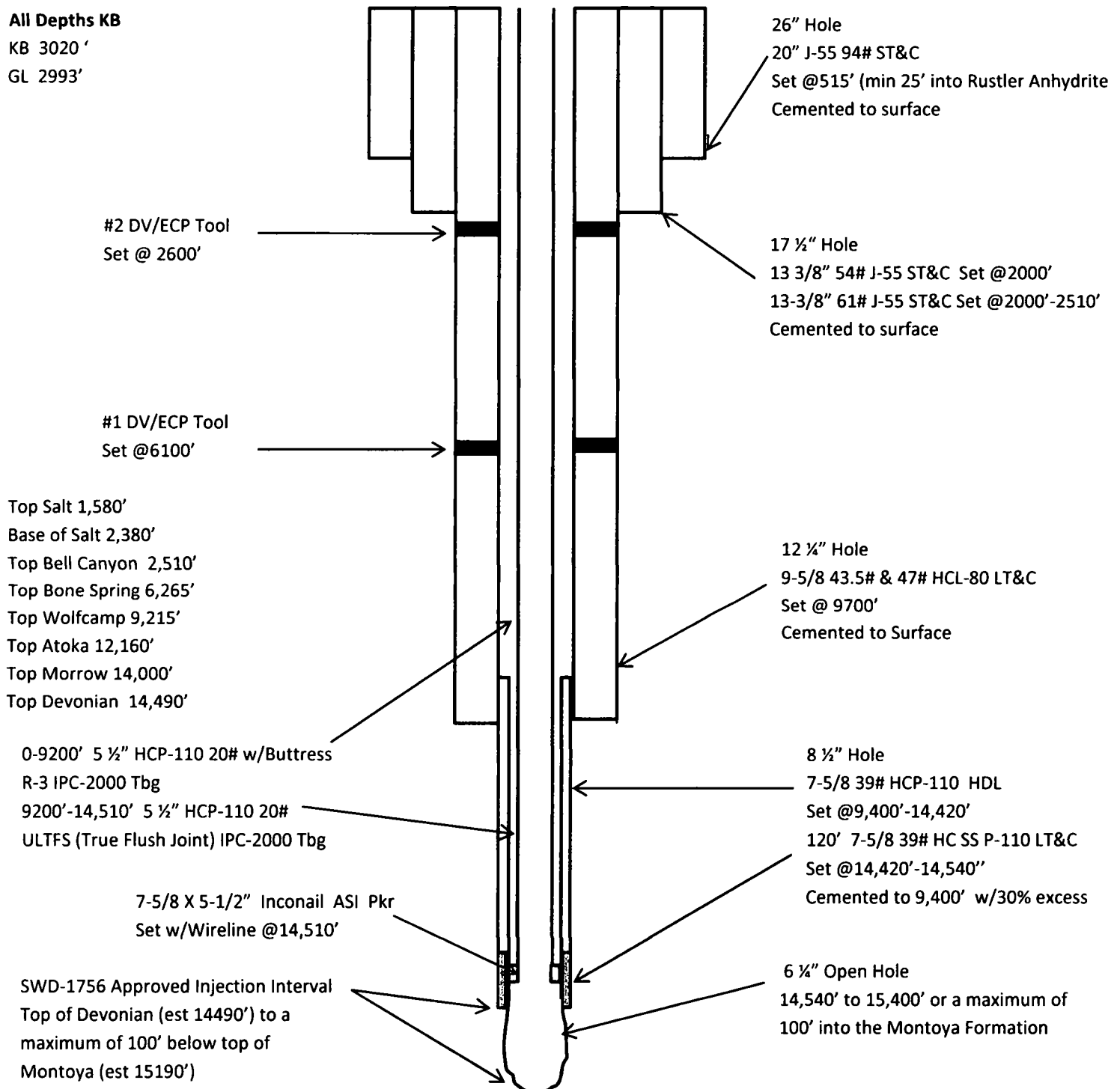
OCT 15 2018

DISTRICT II-ARTESIA O.C.D.

## All Depths KB

KB 3020'

GL 2993'



State of New Mexico  
Energy, Minerals and Natural Resources Department

---

**Susana Martinez**  
Governor

**Ken McQueen**  
Cabinet Secretary

**Matthias Sayer**  
Deputy Cabinet Secretary

**Heather Riley, Division Director**  
Oil Conservation Division



Administrative Order SWD-1756  
October 3, 2018

**ADMINISTRATIVE ORDER  
OF THE OIL CONSERVATION DIVISION**

Pursuant to the provisions of Division Rule 19.15.26.8(B) NMAC, Judah Oil, LLC (the "operator") seeks an administrative order for its Mile Marker 5 State SWD Well No. 1 (the "proposed well") with a location of 660 feet from the North line and 2310 feet from the West line, Unit letter C of Section 10, Township 26 South, Range 28 East, NMPM, Eddy County, New Mexico, for the purpose of commercial disposal of produced water.

**THE DIVISION DIRECTOR FINDS THAT:**

The application has been duly filed under the provisions of Division Rule 19.15.26.8(B) NMAC and satisfactory information has been provided that affected parties have been notified and no objections have been received within the prescribed waiting period. The applicant has presented satisfactory evidence that all requirements prescribed in Division Rule 19.15.26.8 NMAC have been met and the operator is in compliance with Division Rule 19.15.5.9 NMAC.

**Application for Disposal in Devonian and Silurian Formations:** Due to the potential for the projected injection volume of the proposed well to impact an area greater than the one-half mile radius applied in Division Form C-108 and Division rule, the applicant has provided the following supplementary information:

1. Notification following Division Rule 19.15.26.8(B) NMAC for a radius of one mile from the surface location of the proposed well; and
2. An expanded Area of Review for wells penetrating the disposal interval for a radius of one mile from the surface location of the proposed well.

No statement assessing the potential of induced-seismic events associated with the disposal activities for the predicted service life of the proposed well was provided with this supplementary information.

**IT IS THEREFORE ORDERED THAT:**

The applicant, Judah Oil, LLC (OGRID 245872), is hereby authorized to utilize its Mile Marker 5 State SWD Well No. 1 (API 30-015-44818) with a location of 660 feet from the North line and 2310 feet from the West line, Unit letter C of Section 10, Township 26 South, Range 28 East, NMPM, Eddy County, for disposal of oil field produced water (UIC Class II only) through open-hole completion into an interval consisting of the Devonian and Silurian formations from approximately 14490 feet to approximately 15190 feet (including a maximum of 100 feet of the

Montoya formation). Injection will occur through internally-coated, 5½-inch or smaller tubing within the 7⅝-inch liner with a packer set within 100 feet of the top of the disposal interval. This order does not allow disposal into:

1. The Woodford Shale and formations above the lower contact of the Woodford Shale;
2. Formations below the Silurian formations including the Montoya formation and the Ellenburger formation (lower Ordovician); and
3. Any lost circulation intervals directly on top and obviously connected to these formations.

*Prior to commencing disposal, the operator shall submit mudlog and geophysical logs information, to the Division's District geologist and Santa Fe Bureau Engineering office, showing evidence agreeable that only the permitted formation is open for disposal including a summary of depths (picks) for contacts of the formations which the Division shall use to amend this order for a final description of the depth for the injection interval. If significant hydrocarbon shows occur while drilling, the operator shall notify the Division's District II and the operator shall be required to receive written permission prior to commencing disposal.*

*If cement does not circulate on any casing string, the operator shall run a cement bond log (CBL) or other log to determine top of cement and shall notify the Artesia District with the top of cement on the emergency phone number prior to continuing with any further cement activity with the proposed well. If cement did not tie back in to next higher casing shoe, the operator shall perform remedial cement job to bring cement, at a minimum, 200 feet above the next higher casing shoe.*

*The operator shall run a CBL (or equivalent) across the 7⅝-inch liner from 500 feet above the liner to the bottom of the liner to demonstrate placement cement across the length of the liner and the cement bond with the tie-in with the next shallower casing string. The operator shall provide a copy of the CBL to the Division's District II prior to commencing disposal.*

*Prior to commencing disposal, the operator shall obtain a bottom-hole pressure measurement representative of the open-hole completion. This information shall be provided with the written notice of the date of commencement of disposal.*

**IT IS FURTHER ORDERED THAT:**

The operator shall take all steps necessary to ensure that the disposed water enters only the approved disposal interval and is not permitted to escape to other formations or onto the surface. This includes the completion and construction of the well as described in the application and, if necessary, as modified by the District Supervisor.

After installing tubing, the casing-tubing annulus shall be loaded with an inert fluid and equipped with a pressure gauge or an approved leak detection device in order to determine leakage in the casing, tubing, or packer. The casing shall be pressure tested from the surface to the packer setting depth to assure casing integrity.

The well shall pass an initial mechanical integrity test ("MIT") prior to initially commencing disposal and prior to resuming disposal each time the disposal packer is unseated. All MIT procedures and schedules shall follow the requirements in Division Rule 19.15.26.11(A) NMAC. The Division Director retains the right to require at any time wireline verification of completion and packer setting depths in this well.

Without limitation on the duties of the operator as provided in Division Rules 19.15.29 and 19.15.30 NMAC, or otherwise, the operator shall immediately notify the Division's District II office of any failure of the tubing, casing or packer in the well, or of any leakage or release of water, oil or gas from around any produced or plugged and abandoned well in the area, and shall take such measures as may be timely and necessary to correct such failure or leakage.

If the disposal well fails a MIT or if there is evidence that the mechanical integrity of said well is impacting correlative rights, the public health, any underground sources of fresh water, or the environment, the Division Director shall require the well to be shut-in within 24 hours of discovery and the operator shall redirect all disposal waters to another facility. The operator shall take the necessary actions to address the impacts resulting from the mechanical integrity issues in accordance with Division Rule 19.15.26.10 NMAC, and the well shall be tested pursuant to Rule 19.15.26.11 NMAC prior to returning to injection.

The wellhead injection pressure on the well shall be limited to **no more than 2898 psi**. In addition, the disposal well or system shall be equipped with a pressure limiting device in workable condition which shall, at all times, limit surface tubing pressure to the maximum allowable pressure for this well.

The Director of the Division may authorize an increase in tubing pressure upon a proper showing by the operator of said well that such higher pressure will not result in migration of the disposed fluid from the target formations. Such proper showing shall be demonstrated by sufficient evidence including but not limited to an acceptable step-rate test.

The operator shall notify the supervisor of the Division's District II office of the date and time of the installation of disposal equipment and of any MIT so that the same may be inspected and witnessed. The operator shall provide written notice of the date of commencement of disposal to the Division's District II office. The operator shall submit monthly reports of the disposal operations that includes number of days of operation, injection volume, and injection pressure on Division Form C-115, in accordance with Division Rules 19.15.26.13 and 19.15.7.24 NMAC.

The injection authority granted under this order is not transferable except upon Division approval. The Division may require the operator to demonstrate mechanical integrity of any injection well that will be transferred prior to approving transfer of authority to inject.

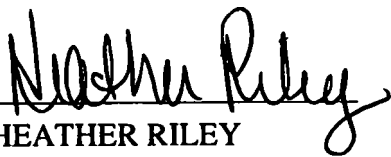
The Division may revoke this injection order after notice and hearing if the operator is in violation of Rule 19.15.5.9 NMAC.

The disposal authority granted herein shall terminate one (1) year after the effective date of this Order if the operator has not commenced injection operations into the subject well. One

year after the last date of reported disposal into this well, the Division shall consider the well abandoned, and the authority to dispose will terminate *ipso facto*. The Division, upon written request mailed by the operator prior to the termination date, may grant an extension thereof for good cause.

Compliance with this Order does not relieve the operator of the obligation to comply with other applicable federal, state or local laws or rules, or to exercise due care for the protection of fresh water, public health and safety and the environment.

Jurisdiction is retained by the Division for the entry of such further orders as may be necessary for the prevention of waste and/or protection of correlative rights or upon failure of the operator to conduct operations (1) to protect fresh or protectable waters or (2) consistent with the requirements in this order, whereupon the Division may, after notice and hearing, terminate the disposal authority granted herein.



HEATHER RILEY

Director

HR/prg

cc: Oil Conservation Division – Artesia District Office  
State Land Office – Oil, Gas and Minerals Division  
Well file 30-015-44818