

UNITED STATES
DEPARTMENT OF THE INTERIOR
BUREAU OF LAND MANAGEMENT

RECEIVED Artesia

FORM APPROVED
OMB No. 1004-0137
Expires: July 31, 2010

WELL COMPLETION OR RECOMPLETION REPORT AND LOGS
OCT 2 2 2018

5. Lease Serial No.
NMNM11038

1a. Type of Well ☐ Oil Well ☒ Gas Well ☐ Dry ☐ Other
b. Type of Completion ☒ New Well ☐ Work Over ☐ Deepen
Other _____

DISTRICT-ARTESIA OGD.

6. If Indian, Allottee or Tribe Name

7. Unit or CA Agreement Name and No.

2. Name of Operator
MEWBOURNE OIL COMPANY

Contact: JACKIE LATHAN
E-Mail: jlathan@mewbourne.com

8. Lease Name and Well No.
FULLER 14/11 W2HA FED 3H

3. Address P O BOX 5270
HOBBS, NM 88241

3a. Phone No. (include area code)
Ph: 575-393-5905

9. API Well No.
30-015-44601-00-S1

4. Location of Well (Report location clearly and in accordance with Federal requirements)*

At surface SENE 2500FNL 435FEL 32.042423 N Lat, 103.946953 W Lon
Sec 14 T26S R29E Mer NMP
At top prod interval reported below SENE 2110FNL 453FEL
Sec 11 T26S R29E Mer NMP
At total depth NENE 333FNL 460FEL 32.063217 N Lat, 103.946899 W Lon

10. Field and Pool, or Exploratory
PURPLE SAGE-WOLFCAMP (GAS)

11. Sec., T., R., M., or Block and Survey
or Area Sec 14 T26S R29E Mer NMP

12. County or Parish
EDDY

13. State
NM

14. Date Spudded
01/08/2018

15. Date T.D. Reached
02/13/2018

16. Date Completed
☐ D & A ☒ Ready to Prod.
06/25/2018

17. Elevations (DF, KB, RT, GL)*
2949 GL

18. Total Depth: MD 18665
TVD 11360

19. Plug Back T.D.: MD 18630
TVD 11360

20. Depth Bridge Plug Set: MD
TVD

21. Type Electric & Other Mechanical Logs Run (Submit copy of each)
EXEMPTFROMLOGGI

22. Was well cored? ☒ No ☐ Yes (Submit analysis)
Was DST run? ☒ No ☐ Yes (Submit analysis)
Directional Survey? ☐ No ☒ Yes (Submit analysis)

23. Casing and Liner Record (Report all strings set in well)

Hole Size	Size/Grade	Wt. (#/ft.)	Top (MD)	Bottom (MD)	Stage Cement Depth	No. of Sk. & Type of Cement	Slurry Vol. (BBL)	Cement Top*	Amount Pulled
17.500	13.375 J55	54.5	0	672		700	166	0	
12.250	9.625 N80	40.0	0	4192		1000	345	0	
8.750	7.000 HCP110	29.0	0	11407		925	315	3892	
6.125	4.500 HCP110	13.5	10743	18625		450	199	0	

24. Tubing Record

Size	Depth Set (MD)	Packer Depth (MD)	Size	Depth Set (MD)	Packer Depth (MD)	Size	Depth Set (MD)	Packer Depth (MD)

25. Producing Intervals

26. Perforation Record

Formation	Top	Bottom	Perforated Interval	Size	No. Holes	Perf. Status
A) WOLFCAMP	10085	18665	11471 TO 18625	0.390	1584	OPEN - Wolfcamp
B)						
C)						
D)						

27. Acid, Fracture, Treatment, Cement Squeeze, Etc.

Depth Interval	Amount and Type of Material
11471 TO 18625	17,746,596 GAL SLICKWATER, CARRYING 15,140,690# LOCAL 100 MESH SAND

28. Production - Interval A

Date First Produced	Test Date	Hours Tested	Test Production	Oil BBL	Gas MCF	Water BBL	Oil Gravity Corr. API	Gas Gravity	Production Method
06/25/2018	07/09/2018	24	→	225.0	5443.0	1844.0	49.6	0.68	FLOWS FROM WELL
Choke Size	Tbg. Press. Flwg.	Csg. Press.	24 Hr. Rate	Oil BBL	Gas MCF	Water BBL	Gas:Oil Ratio	Well Status	
20/64	SI	5200.0	→	225	5443	1844	24191	PGW	

28a. Production - Interval B

Date First Produced	Test Date	Hours Tested	Test Production	Oil BBL	Gas MCF	Water BBL	Oil Gravity Corr. API	Gas Gravity	Production Method
			→						
Choke Size	Tbg. Press. Flwg.	Csg. Press.	24 Hr. Rate	Oil BBL	Gas MCF	Water BBL	Gas:Oil Ratio	Well Status	
	SI		→						

ACCEPTED FOR RECORD
OCT 22 2018
Dinah Hargett
BUREAU OF LAND MANAGEMENT
CARLSBAD FIELD OFFICE

(See Instructions and spaces for additional data on reverse side)

ELECTRONIC SUBMISSION #426850 VERIFIED BY THE BLM WELL INFORMATION SYSTEM

** BLM REVISED ** BLM REVISED ** BLM REVISED ** BLM REVISED ** BLM REVISED **

Reclamation Due: 12/25/2018

28b. Production - Interval C

Date First Produced	Test Date	Hours Tested	Test Production →	Oil BBL	Gas MCF	Water BBL	Oil Gravity Corr. API	Gas Gravity	Production Method
Choke Size	Tbg. Press. Flwg. SI	Csg. Press.	24 Hr. Rate →	Oil BBL	Gas MCF	Water BBL	Gas:Oil Ratio	Well Status	

28c. Production - Interval D

Date First Produced	Test Date	Hours Tested	Test Production →	Oil BBL	Gas MCF	Water BBL	Oil Gravity Corr. API	Gas Gravity	Production Method
Choke Size	Tbg. Press. Flwg. SI	Csg. Press.	24 Hr. Rate →	Oil BBL	Gas MCF	Water BBL	Gas:Oil Ratio	Well Status	

29. Disposition of Gas(Sold, used for fuel, vented, etc.)

SOLD

30. Summary of Porous Zones (Include Aquifers):

Show all important zones of porosity and contents thereof: Cored intervals and all drill-stem tests, including depth interval tested, cushion used, time tool open, flowing and shut-in pressures and recoveries.

31. Formation (Log) Markers

Formation	Top	Bottom	Descriptions, Contents, etc.	Name	Top
					Meas. Depth
WOLFCAMP	10085	17765	OIL, WATER & GAS	RUSTLER	625
				SALADO	940
				CASTILE	1560
				BASE OF SALT	2885
				DELAWARE	3080
				BONE SPRING	6885
				WOLFCAMP	10085

32. Additional remarks (include plugging procedure):

MOC is exempt for logging.

33. Circle enclosed attachments:

- | | | | |
|---|--------------------|---------------|-----------------------|
| 1. Electrical/Mechanical Logs (1 full set req'd.) | 2. Geologic Report | 3. DST Report | 4. Directional Survey |
| 5. Sundry Notice for plugging and cement verification | 6. Core Analysis | 7 Other: | |

34. I hereby certify that the foregoing and attached information is complete and correct as determined from all available records (see attached instructions):

Electronic Submission #426850 Verified by the BLM Well Information System.

For MEWBOURNE OIL COMPANY, sent to the Carlsbad

Committed to AFMSS for processing by DUNCAN WHITLOCK on 07/31/2018 (18DW0203SE)

Name (please print) JACKIE LATHAN

Title AUTHORIZED REPRESENTATIVE

Signature (Electronic Submission)

Date 07/10/2018

Title 18 U.S.C. Section 1001 and Title 43 U.S.C. Section 1212, make it a crime for any person knowingly and willfully to make to any department or agency of the United States any false, fictitious or fraudulent statements or representations as to any matter within its jurisdiction.

**** REVISED ** REVISED ** REVISED ** REVISED ** REVISED ** REVISED ** REVISED ** REVISED ****

RECEIVED

District I
1625 N. French Dr., Hobbs, NM 88240
Phone: (575) 393-6161 Fax: (575) 393-0720
District II
811 S. First St., Artesia, NM 88210
Phone: (575) 748-1283 Fax: (575) 748-9720
District III
1000 Rio Brazos Road, Aztec, NM 87410
Phone: (505) 334-6178 Fax: (505) 334-6170
District IV
1220 S. St. Francis Dr., Santa Fe, NM 87505
Phone: (505) 476-3460 Fax: (505) 476-3462

State of New Mexico
Energy, Minerals & Natural Resources Department
OIL CONSERVATION DIVISION
1220 South St. Francis
Santa Fe, NM 87505

Form C-102
Revised August 1, 2011
Submit one copy to appropriate
District Office

☐ AMENDED REPORT

WELL LOCATION AND ACREAGE DEDICATION PLAT

1 API Number 30-015-44601		2 Pool Code 98220		3 Pool Name Purple Sage; Wolfcamp (Gas)	
4 Property Code 320514		5 Property Name FULLER 14/11 W2HA FEDERAL			6 Well Number 3H
7 OGRID NO. 14744		8 Operator Name MEWBOURNE OIL COMPANY			9 Elevation 2949'

10 Surface Location

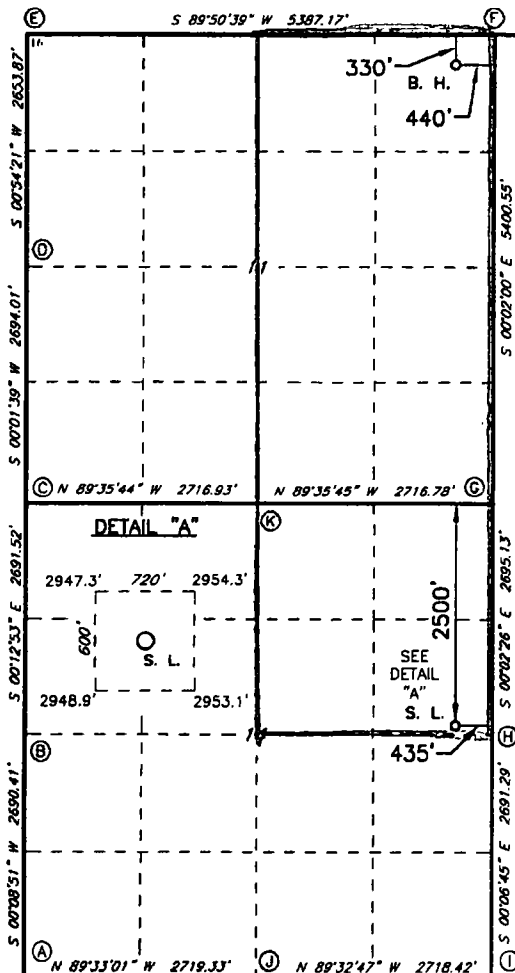
UL or lot no.	Section	Township	Range	Lot Idn	Feet from the	North/South line	Feet from the	East/West line	County
H	14	26S	29E		2500	NORTH	435	EAST	EDDY

11 Bottom Hole Location If Different From Surface

UL or lot no.	Section	Township	Range	Lot Idn	Feet from the	North/South line	Feet from the	East/West line	County
A	11	26S	29E		333'	NORTH	460	EAST	EDDY

12 Dedicated Acres 4.80	13 Joint or Infill	14 Consolidation Code	15 Order No.
-----------------------------------	--------------------	-----------------------	--------------

No allowable will be assigned to this completion until all interest have been consolidated or a non-standard unit has been approved by the division.



GEODETIC DATA
NAD 83 GRID - NM EAST
SURFACE LOCATION
N: 379385.9 - E: 661056.2
LAT: 32.0424232° N
LONG: 103.9469525° W
BOTTOM HOLE
N: 386950.6 - E: 661046.5
LAT: 32.0632180° N
LONG: 103.9468963° W

GEODETIC DATA
NAD 27 GRID - NM EAST
SURFACE LOCATION
N: 379328.6 - E: 619870.5
LAT: 32.0422981° N
LONG: 103.9464713° W
BOTTOM HOLE
N: 386892.9 - E: 619861.0
LAT: 32.0630933° N
LONG: 103.9464145° W

CORNER DATA
NAD 83 GRID - NM EAST
A: FOUND BRASS CAP "1940"
N: 376539.9 - E: 656060.1
B: FOUND BRASS CAP "1940"
N: 379229.8 - E: 656067.0
C: FOUND BRASS CAP "1940"
N: 381920.7 - E: 656056.9
D: FOUND BRASS CAP "1940"
N: 384614.1 - E: 656058.2
E: FOUND 1/2" REBAR
N: 387267.1 - E: 656100.2
F: FOUND BRASS CAP "1940"
N: 387281.8 - E: 661486.2
G: FOUND BRASS CAP "1940"
N: 381882.4 - E: 661489.4
H: FOUND BRASS CAP "1940"
N: 379187.8 - E: 661491.3
I: FOUND BRASS CAP "1940"
N: 376497.1 - E: 661496.5
J: FOUND BRASS CAP "1940"
N: 376518.6 - E: 658778.8
K: FOUND BRASS CAP "1940"
N: 381901.5 - E: 658773.2

17 OPERATOR CERTIFICATION

I hereby certify that the information contained herein is true and complete to the best of my knowledge and belief, and that this organization either owns a working interest or unleased mineral interest in the land including the proposed bottom hole location or has a right to drill this well at this location pursuant to a contract with an owner of such a mineral or working interest, or to a voluntary pooling agreement or a compulsory pooling order heretofore entered by the division.

Jackie Lathan 7/6/18
Signature Date
Jackie Lathan
Printed Name

E-mail Address

18 SURVEYOR CERTIFICATION

I hereby certify that the well location shown on this plat was plotted from field notes of actual surveys made by me or under my supervision, and that the same is true and correct to the best of my belief.

8-14-2017

Date of Survey

Signature and Seal of Professional Surveyor

19680
Certificate Number

RRC - Job No.:

LS1708498

