

District I
1625 N. French Dr., Hobbs, NM 88240
Phone: (575) 393-6161 Fax: (575) 393-0720
District II
811 S. First St., Artesia, NM 88210
Phone: (575) 748-1283 Fax: (575) 748-9720
District III
1000 Rio Brazos Road, Aztec, NM 87410
Phone: (505) 334-6178 Fax: (505) 334-6170
District IV
1220 S. St. Francis Dr., Santa Fe, NM 87505
Phone: (505) 476-3460 Fax: (505) 476-3462

State of New Mexico
Energy, Minerals & Natural Resources Department
OIL CONSERVATION DIVISION
1220 South St. Francis Dr.
Santa Fe, NM 87505

RECEIVED

JUL 11 2018

DISTRICT II-ARTESIA

Form C-102
Revised August 1, 2011
Submit one copy to appropriate
District Office

AMERICAN REPORT

WELL LOCATION AND ACREAGE DEDICATION PLAT

¹ API Number 30-015-43373	² Pool Code 98220	³ Pool Name Purple Sage, Wolfcamp (Gas)
⁴ Property Code 315262	⁵ Property Name BLACK RIVER 25 FED COM	⁶ Well Number 1H
⁷ OGRID No. 215099	⁸ Operator Name CIMAREX ENERGY CO.	⁹ Elevation 3312.9'

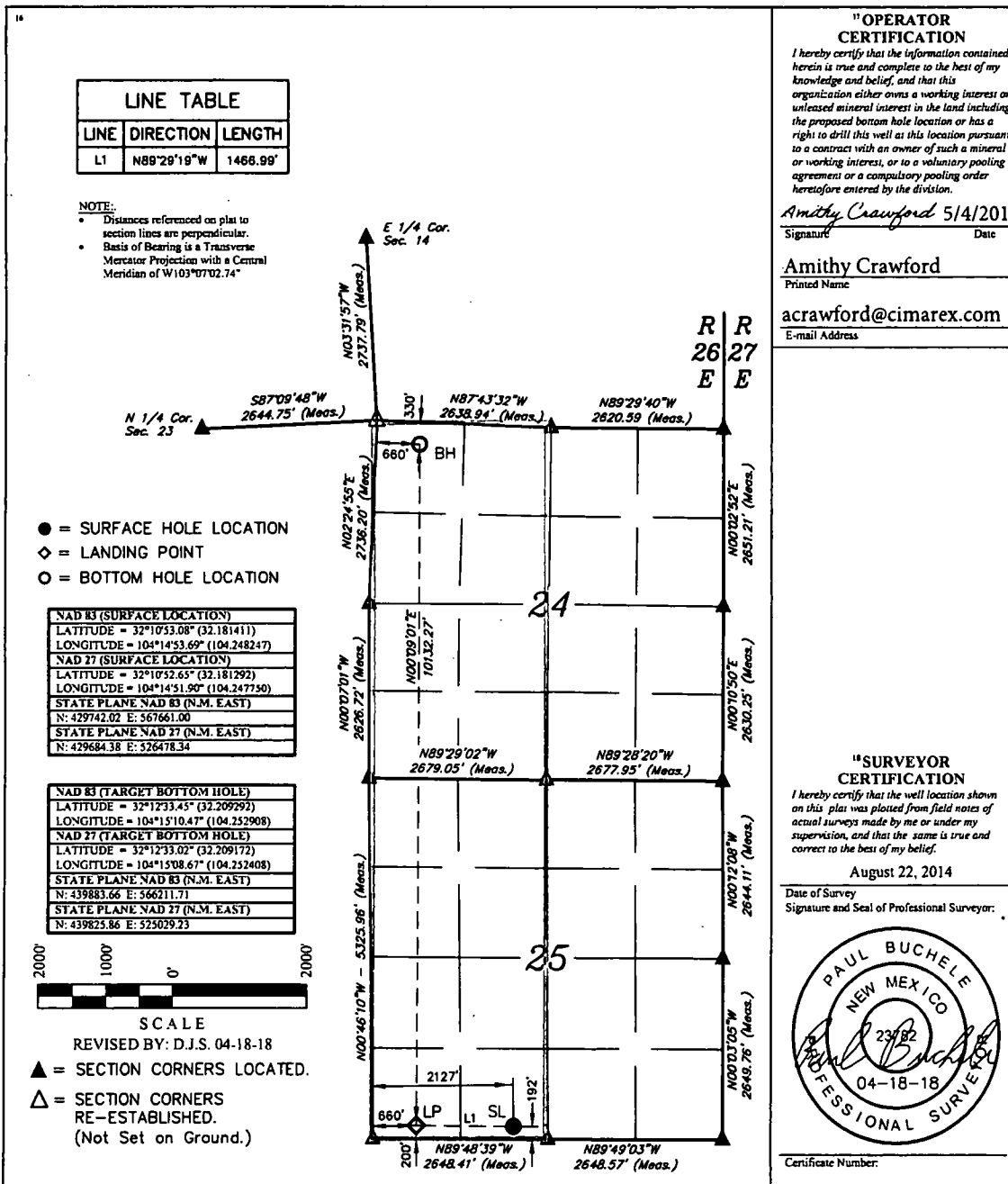
¹⁰ Surface Location

UL or lot no.	Section	Township	Range	Lot Ids	Feet from the	North/South line	Feet from the	East/West line	County
N	25	24 S	26 E		192	SOUTH	2127	WEST	EDDY

¹¹ Bottom Hole Location If Different From Surface

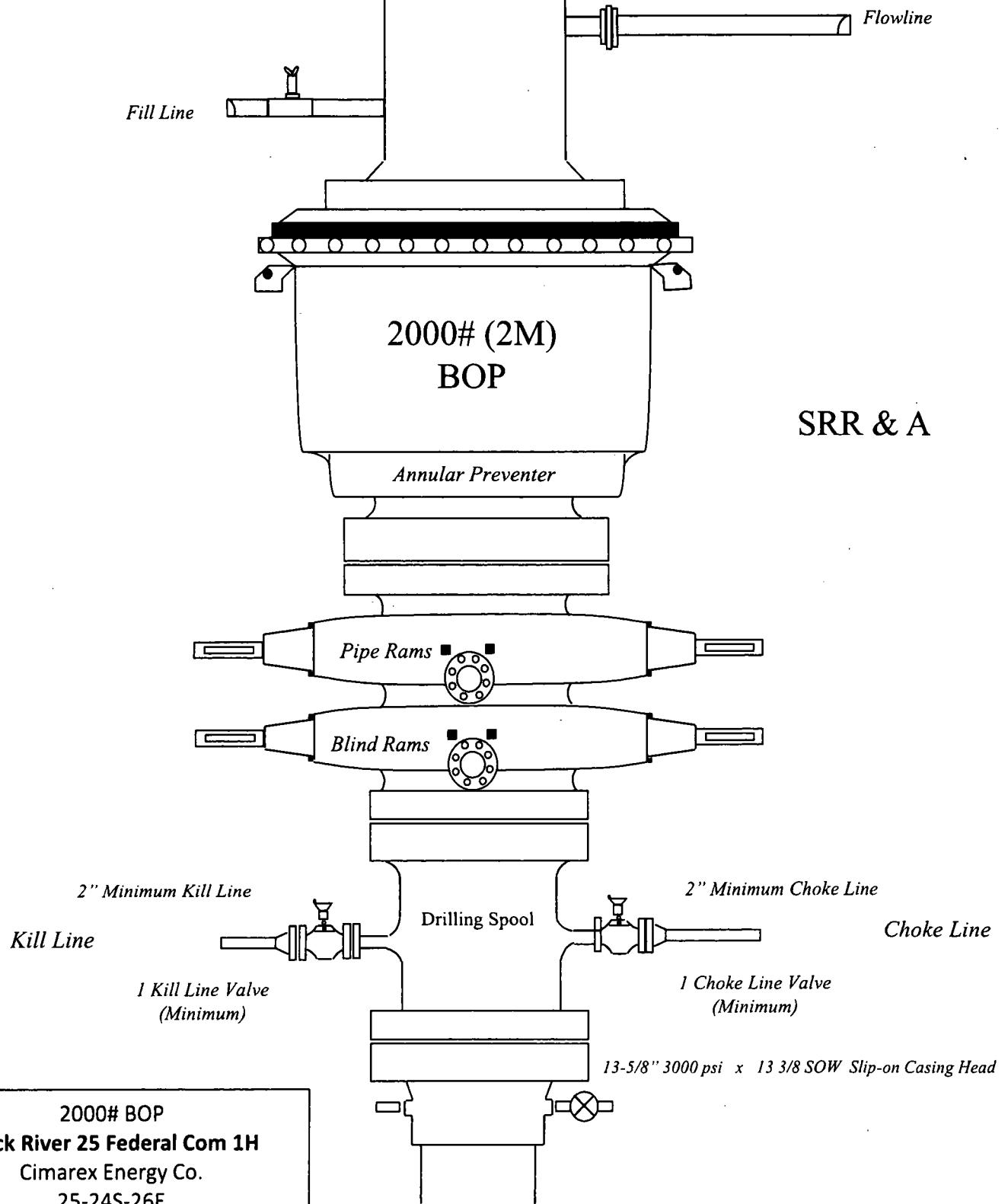
UL or lot no.	Section	Township	Range	Lot Ids	Feet from the	North/South line	Feet from the	East/West line	County
D	24	24 S	26 E		330	NORTH	660	WEST	EDDY
¹² Dedicated Acres 640	¹³ Joint or Infill	¹⁴ Consolidation Code	¹⁵ Order No.						

No allowable will be assigned to this completion until all interests have been consolidated or a non-standard unit has been approved by the division.



RW 9-6-18

Drilling 12-1/4" hole
below 13 3/8" Casing



SRR & A

2000# BOP
Black River 25 Federal Com 1H
Cimarex Energy Co.
25-24S-26E
Eddy Co., NM

Drilling 8-3/4" hole
below 9 5/8" Casing

Fill Line

Flowline

3000# (3M)
BOP

Annular Preventer

SRR & A

Pipe Rams

Blind Rams

2" Minimum Kill Line

3" minimum choke line

Kill Line

Drilling
Spool

Choke Line

2 Valves Minimum
(including 1 check valve)

2 Valves Minimum

13-5/8" 3000 psi x 11" 5000 psi
Wellhead Assembly

Wellhead
Assembly

13-5/8" 3000# psi x 13-3/8" SOW Casing Head

3000# BOP
Black River 25 Federal Com 1H
Cimarex Energy Co.
25-24S-26E
Eddy Co., NM

Drilling 6" hole below 7"
Casing

Fill Line

Flowline

5000# (5M)
BOP

Annular Preventer

SRR & A

Pipe Rams

Blind Rams

2" Minimum Kill Line

Kill Line

Drilling
Spool

3" minimum choke line

Choke Line

2 Valves Minimum
(HCR Required)

2 Valves and a check valve

Wellhead
Assembly

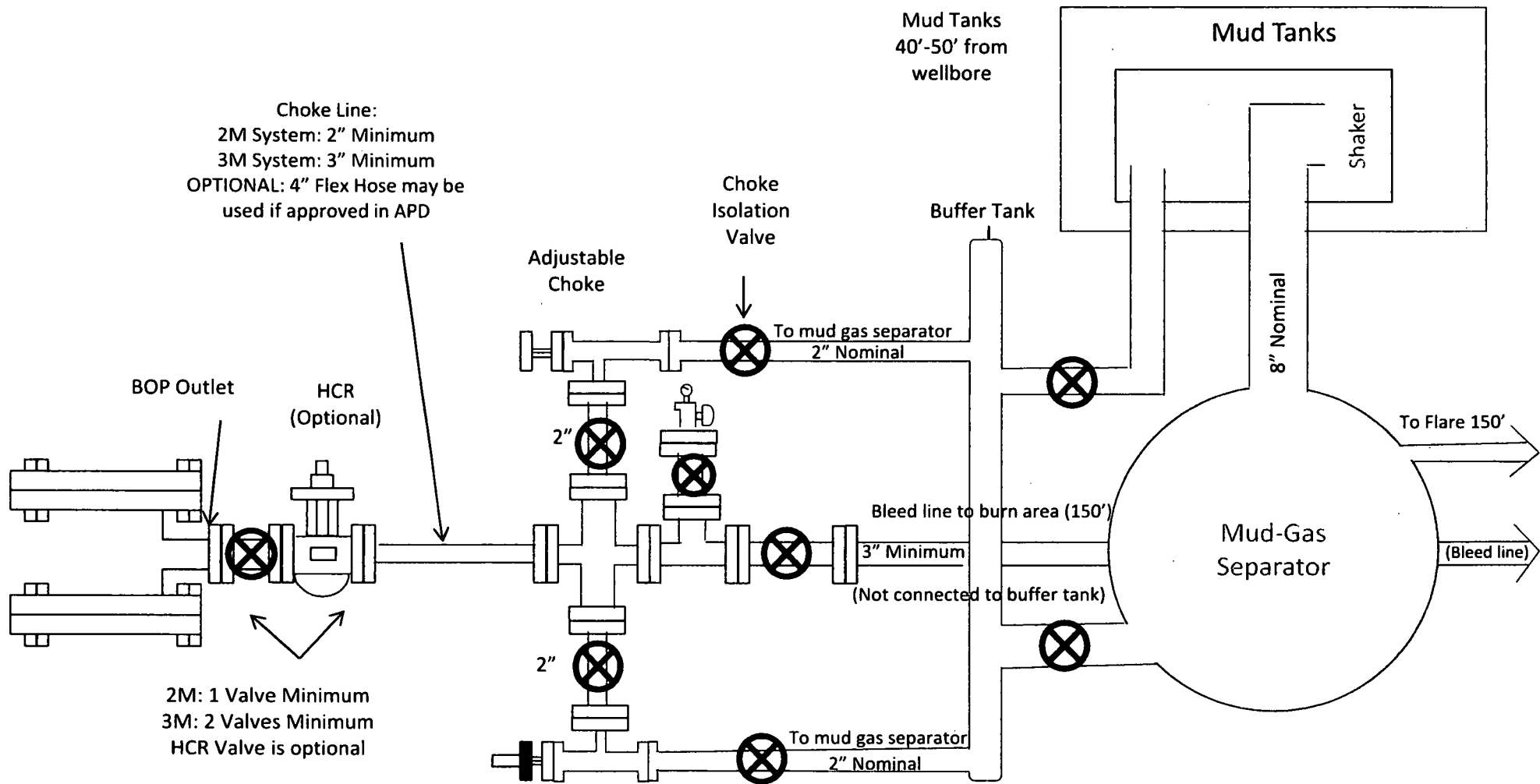
11" 5000 psi x 7-1/16" 10,000 psi
Wellhead Assembly

Wellhead
Assembly

13-5/8" 3000 psi x 11" 5000 psi
Wellhead Assembly

13-5/8" 3000# psi x 13-3/8" SOW Casing Head

5000# BOP
Black River 25 Federal Com 1H
Cimarex Energy Co.
25-24S-26E
Eddy Co., NM



2M: 1 Valve Minimum
 3M: 2 Valves Minimum
 HCR Valve is optional

Drilling Operations Choke Manifold 2M/3M Service

Choke Manifold Diagram
 Black River 25 Federal Com 1H
 Cimarex Energy Co.
 25-24S-26E
 Eddy Co., NM

