

DISTRICT I
1625 N. FRENCH DR., HOBBBS, NM 88240
Phone: (505) 893-6161 Fax: (505) 893-0720

DISTRICT II
811 S. FIRST ST., ARTESIA, NM 88210
Phone: (505) 748-1883 Fax: (505) 748-0720

DISTRICT III
1000 RIO BRAZOS RD., AZTEC, NM 87410
Phone: (505) 334-6178 Fax: (505) 334-6170

DISTRICT IV
1220 S. ST. FRANCIS DR., SANTA FE, NM 87505
Phone: (505) 476-3460 Fax: (505) 476-3466

State of New Mexico
Energy, Minerals & Natural Resources Department

OIL CONSERVATION DIVISION

1220 SOUTH ST. FRANCIS DR. ARTESIA DISTRICT
Santa Fe, New Mexico 87505

Form C-102

Revised August 1, 2011

Submit one copy to appropriate

District Office

OCT 31 2018

☐ AMENDED REPORT

WELL LOCATION AND ACREAGE DEDICATION PLAT

API Number 30-015-45379	Pool Code 53805	Pool Name Sand Dunes; Bone Spring
Property Code 3522	Property Name TODD 36 STATE	Well Number 231H
OGRID No. 6137	Operator Name DEVON ENERGY PRODUCTION COMPANY, L.P.	Elevation 3504.7'

Surface Location

UL or lot No.	Section	Township	Range	Lot Idn	Feet from the	North/South line	Feet from the	East/West line	County
N	36	23-S	31-E		330	SOUTH	1629	WEST	EDDY

Bottom Hole Location If Different From Surface

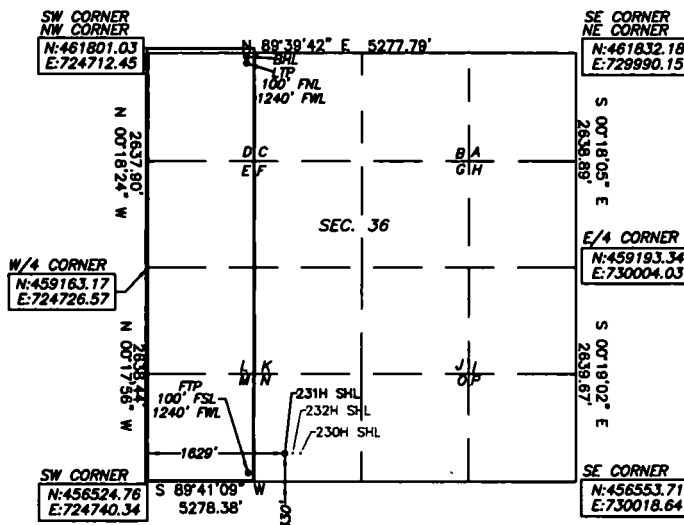
UL or lot No.	Section	Township	Range	Lot Idn	Feet from the	North/South line	Feet from the	East/West line	County
D	36	23-S	31-E		20	NORTH	1240	WEST	EDDY

Dedicated Acres 160	Joint or Infill	Consolidation Code	Order No.
-------------------------------	-----------------	--------------------	-----------

NO ALLOWABLE WILL BE ASSIGNED TO THIS COMPLETION UNTIL ALL INTERESTS HAVE BEEN CONSOLIDATED
OR A NON-STANDARD UNIT HAS BEEN APPROVED BY THE DIVISION

BOTTOM OF HOLE
LAT:32.2681186
LONG:-103.7360380

LAST TAKE POINT
LAT:32.2678987
LONG:-103.7360381



FIRST TAKE POINT
LAT:32.2539435
LONG:-103.7360427

TODD 36 STATE 231H
ELEV: 3504.7'
LAT:32.2545757
LONG:-103.7347841

Note: All bearings recited herein
are based on the New Mexico
State Plane Coordinate System,
NAD 83, New Mexico East Zone
3001, US Survey Feet, all
distances are grid.

OPERATOR CERTIFICATION

I hereby certify that the information
herein is true and complete to the best of
my knowledge and belief, and that this
organization either owns a working interest
or unleased mineral interest in the land
including the proposed bottom hole location
or has a right to drill this well at this
location pursuant to a contract with an
owner of such mineral or working interest,
or to a voluntary pooling agreement or a
compulsory pooling order heretofore entered
by the division.

Jenny Harms 10-25-2018
Signature Date

Printed Name
Jenny.harms@dvn.comx

E-mail Address

SURVEYOR CERTIFICATION

I hereby certify that the well location
shown on this plat was plotted from field
notes of actual surveys made by me or
under my supervision, and that the same is
true and correct to the best of my belief.

09/2018

Date of Survey

Signature & Seal of Professional Surveyor



REV: 10/15/18

Certificate No. 22404 B.L. LAMAN
Date of Survey: 10/05/18 DRAWN BY: CM